



FISU
WORLD
UNIVERSITY
GAMES
WINTER

TECHNICAL HANDBOOK

BIATHLON

December 2022

TABLE OF CONTENTS

1. Welcome Messages.....	5
2. Abbreviations.....	8
3. FISU International Technical Committee.....	9
4. General Information	10
4.1 Lake Placid 2023 FISU World University Games.....	10
4.2 Competition Schedule	10
4.3 Opening and Closing Ceremonies.....	10
5. Competition Information.....	11
5.1 Technical Committee	11
5.2 International Technical Officials.....	11
5.3 Competition Structural Chart.....	12
5.4 Technical Regulations	12
5.4.1 Jury Composition.....	13
5.4.2 Protest and Appeal.....	13
5.5 Competition Format.....	14
5.5.1 Individual (15 km – Men, 12.5 km – Women)	14
5.5.2 Sprint (10 km – Men, 7.5 km – Women)	14
5.5.3 Mass Start (15 km – Men, 12.5km – Women).....	14
5.5.4 Pursuit Start (12.5 km – Men, 10 km – Women).....	14
5.5.5 Single Mixed Relay (6 KM – Women + 7.5 KM Men).....	15
5.6 Competition and Training Venue Information.....	15
5.6.1 General Information.....	15
5.6.2 Venue Layouts	15
5.6.3 Course Layouts and Technical Data	15
5.7 Day-by-Day Schedule.....	15
5.7.1 Ceremonies.....	19
5.7.2 Reserve Day	19
5.7.3 Training.....	19

5.7.4 General Technical Meeting.....	19
5.8 Equipment.....	20
5.8.1 Storage and Wax Rooms.....	20
5.8.2 Rifles and ammunition.....	20
5.9 Doping Control.....	21
5.9.1 List of Prohibited Substances	21
5.9.2 Testing	21
5.9.3 Doping Control Stations	22
5.9.4 Therapeutic Use Exemptions (TUEs).....	22
5.9.5 Structure	23
5.10 Mascot and Medals.....	23
5.10.1 Mascot Ceremony.....	23
5.10.2 Medal Ceremony.....	23
5.10.3 Diploma of Honor	24
5.11 Media Interviews.....	24
5.12 Sport Information Services.....	24
5.12.1 Online Sport Information Services	24
5.12.2 Sport Information Center (SIC).....	25
5.12.3 Sport Information at the Venue	25
5.12.4 Sport Information Distribution.....	25
6. Service Information	26
6.1 Accreditation	26
6.2 Radio Frequency Control	26
6.3 Insurance and Responsibilities.....	26
6.4 Transportation.....	27
6.4.1 Transportation System for Athletes and Team Officials (TA).....	27
6.5 Food and Beverages.....	27
6.5.1 Mealtimes.....	27
6.5.2 FNB Services at the Competition Venues.....	27

6.6 Weather and Climate.....	28
6.7 Medical Services	28
6.7.1 Conditions of Medical Assistance	28
6.7.2 Medical Support Structure	28
6.7.3 Medical Support in the Accommodation Sites	28
6.7.4 Dedicated Hospitals and Specialized Medical Facilities	28
7. OC Contacts.....	29
8. Appendices.....	30
8.1 Lake Placid 2023 FISU World University Games Competition Schedule	30
8.2 Venue Layouts.....	31
8.2.1 Venue Plans.....	31
8.2.2 Overview of Trails	32
8.3 Geographical Overview Venues	35

1. WELCOME MESSAGES

*Dear Delegates,
Dear Friends and Colleagues,*

Thank you for your participation in the Lake Placid 2023 FISU World University Games. I would like to recognize the Organizing Committee and FISU for their hard work and dedication—without them, this event would not be possible. The past months have been very important as we put together the final touches to welcome the world's best collegiate-athletes to participate in these FISU Games.

The recent HoD meeting was very successful and as we get closer to the Lake Placid 2023 FISU Games it becomes even more exciting to call Lake Placid a two-time host, since they held the FISU Games in 1972. It is obvious that international events come naturally to the region, therefore, we are confident that Lake Placid is ready to welcome the world's best collegiate-athletes to their stage once again.

We would like to thank each and every one of you for your participation and hope you will spend the next 11 days discovering what this beautiful village in New York State and Adirondack Region has to offer. We are excited to see the result of your hard work and dedication that has gone into the preparation for these Games and are looking forward to having you with us in Lake Placid.

I wish you all good luck and hope you have a great stay in Lake Placid!

Thank you.



*Leonz Eder
Acting President of the
International University Sports Federation*

Dear Technical Delegates and Officials,

I look forward to welcoming you to Lake Placid, NY and the surrounding North Country region, where the Lake Placid 2023 FISU World University Games will soon be underway. It is a privilege and honor to once again the host the World in our historic village!

As a community known for its rich sporting history, Lake Placid is proudly home to the 1932 and 1980 Olympic Winter Games, the 1972 FISU World University Games and countless World Cup and World Championship events. In preparation for the upcoming Lake Placid 2023 FISU Games, the venues have undergone extensive modernizations to provide world class facilities for decades to come, ensuring the continuation of our sporting legacy.

I am pleased to welcome you to my hometown and the surrounding North Country region. This technical handbook is intended to provide you with all the information you need to guide you through your time here. I wish each of the participating collegiate-athletes success and hope everyone leaves with unforgettable memories that are shared for years to come!

Sincerely,



Ashley Walden
Chief Operating Officer of the
Lake Placid 2023 FISU World University Games

Dear Delegations,

Welcome to the Lake Placid 2023 FISU World University Games! Lake Placid, our Adirondack Region and the State of New York thank you for your dedication to University sport and we welcome you to our home with open arms.

As hosts of the 1972 FISU World University Games, we are excited to continue Lake Placid's legacy as a global center of international sport by again welcoming collegiate-athletes from across the globe.

The Organizing Committee recognizes our duty to support collegiate-athletes in their efforts to achieve excellence in their chosen disciplines by providing top-of-the-line competition venues and an unforgettable experience. With this in mind, we have worked to ensure that all participants have an opportunity to showcase their talents as they compete with cooperation and respect for one another.

Enjoy competition, enjoy our village, our region and our state so that you may leave Lake Placid with added and renewed feelings about the positive benefits of international University sport.

Please reach out to us as you may wish.

With all good wishes,



*James B. McKenna
President of the
Lake Placid 2023 FISU World University Games*

2. ABBREVIATIONS

Abbreviation	Name in Full
ADAMS	Anti-Doping Administration and Management System
AMS	Athlete Medical Station
BTH	Biathlon
CIC	FISU International Control Committee
CMI	FISU International Medical Committee
CPH	Crowne Plaza Hotel
CT	FISU Technical Committee
EC	FISU Executive Committee
FISU	International University Sports Federation
FNB	Food & Beverage
GTM	General Technical Meeting
HoD	Head of Delegation
IBU	International Biathlon Union
IF	International Federation
IR	International Referee
ITC	FISU World University Games International Technical Committee
ITO	International Technical Official
LOC	Local Organizing Committee
MVH	Mt Van Hoevenberg
NADO	National Anti-Doping Organization
NF	National Federation
NTO	National Technical Official
NUSF	National University Sports Federation

OC	Organizing Committee
OCN	Olympic Conference Center
RD	Race Director
SIC	Sport Information Center
SID	Sport Information Desk
TD	Technical Delegate
TCC	FISU Technical Committee Chair
TCM	Team Captain's Meeting
TO	Technical Official
TUE	Therapeutic Use Exemptions
VPS	Paul Smith's College
WADA	World Anti-Doping Agency
WC	World Cup

3. FISU INTERNATIONAL TECHNICAL COMMITTEE

Position	First Name	Last Name	Country
FISU TCC ALP	Matjaz	Kranjc	SLO
FISU TCC BTH	Ondrej	Rybar	CZE
FISU TCC CCS	Zofia Stefania	Kielpinska	POL
FISU TCC NCB	Karl	Lustenberger	SUI
FISU TCC SJP	Paul	Ganzenhuber	AUT
FISU TCC FRS	Magnus	Ferry	SWE
FISU TCC SBD	Ola	Sundekvist	SWE
FISU TCC CUR	Scott	Arnold	CAN
FISU TCC IHO	Reto	Bertolotti	SUI
FISU TCC IHO	Igor	Nemecek	SVK
FISU TCC FSK	Dingding	Liu	CHN
FISU TCC STK	So Hee	Kim	KOR
FISU TCC SSK	Moyca	Stoffel	CAN

4. GENERAL INFORMATION

4.1 Lake Placid 2023 FISU World University Games

Date: 12- 22 January 2023

Location: Lake Placid, New York

Sports Program: 12 sports, 86 Medal Events

Venues: 9 venues

4.2 Competition Schedule



4.3 Opening and Closing Ceremonies

Opening Ceremony

Date: 12 January 2023

Location: Olympic Center, 1980 Herb Brooks Arena

Beginning of Ceremony: 19:00

Closing Ceremony

Date: 22 January 2023

Location: Olympic Center, 1980 Herb Brooks Arena

Beginning of Ceremony: 17:10

5. COMPETITION INFORMATION

5.1 Technical Committee

FISU Technical Committee Chair	Ondrej Rybar (CZE)
IBU Technical Delegate	Pascal Morcet (CAN)
Sport Manager	Allan Serrano (USA)
Chief of Competition	Tracy Lamb (USA)
Chief of Range	Matt Sabasteanski (USA)

5.2 International Technical Officials

International Referee Course	Zach Hall (USA)
International Referee Shooting Range	Sara Studebaker-Hall (USA)
International Referee Start/Finish	Donald Nardiello (USA)
International Referee Material Control	Sandrine Charron (CAN)

5.3 Competition Structural Chart

Venue Manager		FISU TCC
Rebecca Dayton		Ondrej Rybar (CZE)
Security	Sport Manager	IBU TD
Michael Ryan	Allan Serrano	Pascal Morcet (CAN)

5.4 Technical Regulations

The Biathlon events will be organized in accordance with the most recent technical regulations of the International Biathlon Union (IBU), except when specifically amended by these regulations or by the FISU Games International Technical Committee (FISU Games ITC).

The program and duration of the competitions will be fixed by the FISU Executive Committee in agreement with the Organizing Committee and the FISU Games ITC. In principle, the program will last eight (8) days and will include the following events:

Men

- Individual 15 km
- Sprint 10 km
- Pursuit 12.5 km
- Mass Start 15 km

Women

- Individual 12.5 km
- Sprint 7.5 km
- Pursuit 10 km
- Mass Start 12.5 km

Mixed

- Single Mixed Relay 6 km W + 7.5 km M

Entries

Each country is authorized to enter a maximum of eight (8) athletes per gender (total 16 athletes).

In each event, each country may enter:

- Individual events:
 - Individual and sprint: maximum six (6) athletes (per gender).
 - Pursuit: the top 60 athletes (per gender) of the sprint are automatically qualified. No replacement or moving up is possible in the event of athletes not starting.

- Mass Start: All medalists and the additional athletes with the highest points, calculated by IBU WC points in three (3) previous competitions, will qualify up to a field of 30 (per gender). Replacement will be possible until, at the latest, one (1) hour before zeroing starts.
- Team events:
 - Single Mixed Relay: maximum one (1) team per country composed of one (1) W and one (1) M.

Only athletes with an IBUID are allowed to participate in each Biathlon event. Entries are controlled by the Organizing Committee and the IBU Technical Delegate.

Entries/Draw

At the first General Technical Meeting, the Head of Delegation or his/her representative shall confirm and sign the official list of athletes.

The Head of Delegation or his/her representative shall hand in the entry list for Individual and Sprint races the previous day after the official training, which are listed in the day-by-day schedule.

Only with an accreditation card approved by the FISU International Control Committee (CIC) can an athlete be considered for the draw of a starting list and be entitled to participate in any of the competitions.

5.4.1 JURY COMPOSITION

The competition Jury will consist of the following members:

- The IBU TD (Chair of the Jury)
- The Course Referee or one (1) referee assigned by the IBU
- The Competition Chief
- Two (2) team officials elected by the team captains from two (2) different participating countries

The Race Director (FISU Technical Committee Chair) may be present at all meetings but will not have the right to vote.

5.4.2 PROTEST AND APPEAL

Protests must be submitted in writing to the competition secretary or the TD/RD, using the official IBU Protest Form, for the attention of the competition jury, and must be accompanied by a fee of €100, or equivalent in the currency of the Organizing Committee.

The IBU protest form can be obtained from the Competition Secretary or downloaded from the IBU website: <http://res.cloudinary.com/deltatre-spaibu/image/upload/pdhgvytyvl1jqpwpm1u.pdf>

Protest must be in 15 min after the posting of the provisional results.

Each Head of Delegation or his/her deputy is authorized to lodge an appeal against the decision of the Jury. This appeal must be submitted in writing to the Jury of Appeal.

Any sport disciplinary situation which cannot be satisfactorily resolved by the Sport Technical Committee (TC) and the sport specific disciplinary regulations will be reported to the FISU Disciplinary Committee for further action to be taken. Where appropriate, a report will also be sent to the IBU.

5.5 Competition Format

5.5.1 INDIVIDUAL (15 KM – MEN, 12.5 KM – WOMEN)

- The competitors will be started individually at a 30-second interval with four (4) shooting bouts (prone/standing/prone/standing), five (5) laps of 3 km for men and 2.5 km for women. For each missed target, 45 seconds will be added.

5.5.2 SPRINT (10 KM – MEN, 7.5 KM – WOMEN)

- The competitors will be started individually at a 30-second interval with two (2) shooting bouts (prone/standing), three (3) laps of 3.3 km for men and 2.5 km for women. For each missed target, athletes run a penalty loop of 150 m.

5.5.3 MASS START (15 KM – MEN, 12.5KM – WOMEN)

- The competitors will be started simultaneously with four (4) shooting bouts (prone/prone/standing/standing), five (5) laps of 3 km for men and 2.5 km for women. For each missed target, athletes run a penalty loop of 150 m. For this start, the 30 highest-ranking athletes are allowed. All medalists and the additional athletes with the highest points, calculated by IBU WC points in three (3) previous competitions, will qualify up to a field of 30.

Names of athletes qualified for the Mass Start competition must be confirmed by a signed, written form presented to the competition office as soon as possible and at least two (2) hours before the start.

5.5.4 PURSUIT START (12.5 KM – MEN, 10 KM – WOMEN)

- The competitors will be started according to their finish time from the Sprint competition with four (4) shooting bouts (prone/prone/standing/standing), five (5) laps of 2.5 km for men and 2 km for women. For each missed target, athletes run a penalty loop of 150 m. For this start, the 60 highest-ranking athletes from the Sprint competition are allowed to start.

5.5.5 SINGLE MIXED RELAY (6 KM – WOMEN + 7.5 KM MEN)

- The competitors will be started simultaneously, women first, with two (2) shooting bouts (prone/standing) and three (3) laps of 1.5 km, then tagging to the male teammate for two (2) shooting bouts and three laps of 1.5 km, tagging back to the female teammate for two (2) additional bouts of shooting and three (3) laps of 1.5 km, then tagging back to the male teammate for two (2) additional bouts of shooting (prone/standing) and three (3) laps of 1.5 km. For each missed target, athletes must run a 75 m penalty loop.

5.6 Competition and Training Venue Information

5.6.1 GENERAL INFORMATION

OC VENUE MANAGER		Rebecca Dayton	
Venue	Function	Location	Distance from accommodation to venue
Mt Van Hoevenberg (MVH)	Training/ Competition	220 Bobsled Run Lane Lake Placid, NY 12946	29 miles (46.7 km)

5.6.2 VENUE LAYOUTS

See Appendix, Section 8.2

5.6.3 COURSE LAYOUTS AND TECHNICAL DATA

See Appendix, Section 8.2

5.7 Day-by-Day Schedule

“For all televised events, the competition session begins at the stated time, but the actual competition/play will begin five (5) minutes afterwards for broadcast purposes.”

Key	
Training	Light Blue
Competition	Dark Blue
Reserve Days	White
Meeting Days/Additional Information	Yellow
Ceremonies/Social Events	Red

SPORT	DATE	DAY	START TIME	FINISH TIME	EVENT NAME	VENUE
Biathlon	9-Jan-23	MON	17:00	19:00	FISU International Technical Committee (ITC) Meeting	CPH
Biathlon	11-Jan-23	WED	11:00	13:00	Open Training	MVH
Biathlon	11-Jan-23	WED	15:00	16:00	General Technical Meeting (1st TCM)	Pine Room VPS
Biathlon	12-Jan-23	THU	11:00	13:00	Open Training	MVH
Biathlon	12-Jan-23	THU	19:00	20:30	Opening Ceremony	OCN
Biathlon	13-Jan-23	FRI	12:15	14:00	Official Training 15 km Individual M	MVH
Biathlon	13-Jan-23	FRI	14:15	16:00	Official Training 12.5 km Individual W	MVH
Biathlon	13-Jan-23	FRI	16:15		Entry Deadline M&W Individual	MVH
Biathlon	13-Jan-23	FRI	18:00		Team Captain's Meeting	Virtual
Biathlon	14-Jan-23	SAT	11:15	12:05	Zeroing 15 km Individual M	MVH
Biathlon	14-Jan-23	SAT	12:15	13:30	15 km Individual M	MVH
Biathlon	14-Jan-23	SAT	13:35		Mascot Ceremony 15 km Individual M	MVH
Biathlon	14-Jan-23	SAT	13:45	14:00	Medal Ceremony 15 km Individual M	MVH
Biathlon	14-Jan-23	SAT	13:45	14:35	Zeroing 12.5 km Individual W	MVH
Biathlon	14-Jan-23	SAT	14:45	16:00	12.5 km Individual W	MVH

Biathlon	14-Jan-23	SAT	16:05		Mascot Ceremony 12.5 km Individual W	MVH
Biathlon	14-Jan-23	SAT	16:15	16:30	Medal Ceremony 12.5 km Individual W	MVH
Biathlon	15-Jan-23	SUN	12:45	14:30	Official Training Single Mixed Relay	MVH
Biathlon	15-Jan-23	SUN	14:45		Entry Deadline Single Mixed Relay	MVH
Biathlon	16-Jan-23	MON	13:15	13:45	Zeroing Single Mixed Relay	MVH
Biathlon	16-Jan-23	MON	14:00	14:50	Single Mixed Relay	MVH
Biathlon	16-Jan-23	MON	14:55		Mascot Ceremony Single Mixed Relay	MVH
Biathlon	16-Jan-23	MON	18:30		Medal Ceremony Single Mixed Relay	Mid's Park
Biathlon	17-Jan-23	TUE	13:00	14:30	Official Training 10 km Sprint M	MVH
Biathlon	17-Jan-23	TUE	15:00	16:30	Official Training 7.5 km Sprint W	MVH
Biathlon	17-Jan-23	TUE	16:45		Entry Deadline M & W Sprint	
Biathlon	17-Jan-23	TUE	18:00		Team Captain's Meeting	Virtual
Biathlon	18-Jan-23	WED	12:00	12:50	Zeroing 10 km Sprint M	MVH
Biathlon	18-Jan-23	WED	13:00	14:15	10 km Sprint M	MVH
Biathlon	18-Jan-23	WED	14:20		Mascot Ceremony 10 km Sprint M	MVH
Biathlon	18-Jan-23	WED	14:30	14:45	Medal Ceremony 10 km Sprint M	MVH
Biathlon	18-Jan-23	WED	14:20	15:10	Zeroing 7.5 km Sprint W	MVH
Biathlon	18-Jan-23	WED	15:20	16:35	7.5 km Sprint W	MVH
Biathlon	18-Jan-23	WED	16:40		Mascot Ceremony 7.5 km Sprint W	MVH
Biathlon	18-Jan-23	WED	16:50	17:05	Medal Ceremony 7.5 km Sprint W	MVH

Biathlon	19-Jan-23	THU	13:00	13:30	Zeroing 12.5 km Pursuit M	MVH
Biathlon	19-Jan-23	THU	13:40	14:25	12.5 km Pursuit M	MVH
Biathlon	19-Jan-23	THU	14:30		Mascot Ceremony 12.5 km Pursuit M	MVH
Biathlon	19-Jan-23	THU	14:40		Medal Ceremony 10 km Pursuit W	MVH
Biathlon	19-Jan-23	THU	14:40	15:10	Zeroing 10 km Pursuit W	MVH
Biathlon	19-Jan-23	THU	15:20	16:05	10 km Pursuit W	MVH
Biathlon	19-Jan-23	THU	16:10		Mascot Ceremony 10 km Pursuit W	MVH
Biathlon	19-Jan-23	THU	16:20	16:35	Medal Ceremony 10 km Pursuit W	MVH
Biathlon	20-Jan-23	FRI	14:00	15:00	Official Training 15 km Mass Start M	MVH
Biathlon	20-Jan-23	FRI	15:00	16:00	Official Training 12.5 km Mass Start W	MVH
Biathlon	21-Jan-23	FRI	11:40		Confirmation of Entries Mass Start M	MVH
Biathlon	21-Jan-23	SAT	13:00	13:30	Zeroing 15 km Mass Start M	MVH
Biathlon	21-Jan-23	FRI	13:25		Confirmation of Entries Mass Start W	MVH
Biathlon	21-Jan-23	SAT	13:40	14:30	15 km Mass Start M	MVH
Biathlon	21-Jan-23	SAT	14:35		Mascot Ceremony 15 km Mass Start M	MVH
Biathlon	21-Jan-23	SAT	14:45	15:00	Medal Ceremony 15 km Mass Start M	MVH
Biathlon	21-Jan-23	SAT	14:45	15:15	Zeroing 12.5 km Mass Start W	MVH

Biathlon	21-Jan-23	SAT	15:35	16:10	12.5 km Mass Start W	MVH
Biathlon	21-Jan-23	SAT	16:15		Mascot Ceremony 12.5 km Mass Start W	MVH
Biathlon	21-Jan-23	SAT	16:25	16:40	Medal Ceremony 12.5 km Mass Start W	MVH
Biathlon	22-Jan-23	SUN			Reserve Day	MVH
Biathlon	22-Jan-23	SUN	17:10		Closing Ceremony	OCN

5.7.1 CEREMONIES

Mascot Ceremonies will be held immediately following the completion of the competition. Medal Ceremonies for men and women will be held either on venue or at Mid's Park – Medals Plaza. For more information, please refer to the day-by-day schedule in the previous section.

5.7.2 RESERVE DAY

The OC will do its best to hold all competitions on the scheduled days. However, under exceptional weather conditions, the competitions may have to be postponed/rescheduled to the specified Reserve Day, 22 January 2023.

5.7.3 TRAINING

Unofficial training at Mt Van Hoevenberg begins on 11 January 2023. Unofficial training is available 8-11 January, with transportation provided by the OC. Exact times for those training windows are still being finalized with OC Transportation, along with any applicable training booking process, and this will be communicated to all Delegations as soon as possible.

5.7.4 GENERAL TECHNICAL MEETING

The 1st General Technical Meeting will be held on 11 January 2023 at 15:00 at Paul Smith's College. At the 1st General Technical Meeting, the Head of Delegation or his/her representative shall confirm and sign the official entry list of athletes

Only athletes with an active IBUID are allowed to participate in each Biathlon event. Entries are controlled by the Organizing Committee and the IBU. Only with an accreditation card approved by the CIC can an athlete be considered in the drawing of a starting list and be entitled to participate in any of the competitions. Any further details and clarifications which are not yet described in the technical handbook will be communicated at the respective Team Captain's Meetings following the schedule above.

5.8 Equipment

The purpose of the IBU Materials Catalog is to regulate all aspects of materials relating to Biathlon competitions. It is based on the binding nature of the IBU Event and Competition Rules and is part of those rules. The Materials Catalog provides the definitions, current specifications and requirements of all competition-related materials, the approval process for the admission of new materials, and the inspection procedures for enforcing the materials regulations. All equipment used by athletes is governed by the IBU Event and Competition Rules.

5.8.1 STORAGE AND WAX ROOMS

The Lake Placid 2023 FISU World University Games will provide sport equipment storage and waxing rooms for the teams. All facilities are built and organized according to all international requirements. Waxing rooms and cabins for Biathlon will be provided on site at the competition venue. Sections will be allocated to the respective nations and shared among their sports. The wax rooms are equipped with special tables and equipment for preparing skis with lighting, several electric outlets, adequate heating and ventilation, ski racks and waste bins.

Waxing cabins and ammunition storage for athletes competing in Biathlon will be located on site at Mt Van Hoevenberg Parking Lot One. Rifle storage will be housed in the Mountain Pass Lodge lower level across from the Men's and Women's Athlete Changing area.

The LOC is planning on providing two (2) Swix waxing benches (tentatively model TOO754 – Swix World Cup Waxing and Tuning Platform Table) in each waxing cabin/area. Each waxing area (for all relevant sports) will have an ample supply of U.S. 110v power, plug-ins and extensions.

The LOC will NOT be providing power converters/transformers, waxing irons, profiles, vises, etc. However, Swix will offer online shopping options for each delegation. The offering is summarized as follows:

- In late November 2022, the LOC sent each Delegation an invitation, instructions and custom access code for setting up their own Swix/Toko online shop for ordering discounted waxing and tuning equipment. Delegation or Team Managers must register and set up their team Swix/Toko website. Once properly registered, they are granted access to all Swix and Toko waxing and tuning supplies at special Lake Placid 2023 FISU Games pricing.
- The deadline for orders is 31 December 2022. All orders for each delegation will be shipped to a designated onsite location at Mt Van Hoevenberg. Each team order will have the delegation's name and contact person on the package for easy identification.
- The Swix/Toko online shops will close 1 January 2023, giving us the necessary time to receive the products in Lake Placid and get them to the team waxing area locations.

5.8.2 RIFLES AND AMMUNITION

- Firearms and ammunition are **prohibited** in all Village areas and will need to be checked in directly at the airport. They will then be transported by the OC to Mt Van Hoevenberg and stored in the armory.

- Athletes who arrive in Montreal, or any other airport aside from Albany International Airport, will be required to check rifles and ammunition at Mt Van Hoevenberg upon arrival before entering the Village.

See the Rifle and Ammunition Sport Policy for all information regarding the import and export of all rifles and ammunition, as well as storage during competition.

Delegations whose athletes choose not to import ammunition may purchase ammunition directly through [Woods and Waters](#), 255 Broadway, Saranac Lake, N.Y. 12983.

- To submit requests, email info@adkwoodsandwaters.com
- When they submit, they need to include:
 - The quantity of ammo needed.
 - Provide a “good, better and best” option for desired manufacturer and model (Ely Biathlon, Federal Gold, Lapua Polar) as an example.
- When delegations arrive, they will need to finalize the purchase of ammo at the retail location in Saranac Lake, N.Y.

5.9 Doping Control

Doping Control will be carried out in accordance with the WADA World Anti-Doping Code and FISU regulations. Conditions for doping control procedures will be provided during the competitions at all sports venues.

5.9.1 LIST OF PROHIBITED SUBSTANCES

The actual list of prohibited substances and methods is defined in accordance with WADA international standards. National University Sports Federations will be responsible for ensuring that their delegations, namely athletes, are made aware of the actual copy of the prohibited list. Ignorance of the prohibited list contents will in no way constitute a valid excuse for any participant of the Lake Placid 2023 FISU World University Games violating valid FISU Anti-Doping Rules. For the current WADA list of prohibited substances and methods, please refer to the following website: www.wada-ama.org.

5.9.2 TESTING

The required number of samples will be selected during the “in-competition” and “out-of-competition” periods in accordance with the Test Distribution Plan. “In-competition” is defined as the period commencing 12 hours before a competition in which the athlete is scheduled to participate through to the end of such competition, and the sample collection process related to such competition. “Out-of-competition” is defined as any doping control which is not “in-competition.” During the Lake Placid 2023 FISU Games, athletes can be tested at any time without prior notice. Urine and/or blood samples will be collected in compliance with the WADA International Standard for Testing and Investigations (ISTI). A paperless system will be used for the sample collection. The testing will be conducted by Doping Control Officers (DCO) from the U.S.

Anti-Doping Agency (USADA), an anti-doping organization accredited by WADA. Testing will be conducted under the supervision of the FISU International Medical Committee. Doping samples will be sent to the WADA-accredited anti-doping laboratory (LAD) in Montreal, Canada. All results will be sent to the Chairman of the FISU International Medical Committee and entered into the ADAMS system. In the event of a violation of FISU Anti-Doping rules, the responsibility of processing the results lies with the FISU International Medical Committee.

In the event of setting a national record, doping testing of the athlete is carried out at the expense of his/her National University Sports Federation.

5.9.3 DOPING CONTROL STATIONS

Doping control stations are located at each sports venue or in close proximity. The main doping control station is located in the Host City of Lake Placid. All doping control stations will be marked with signs, including signage directing athletes to the stations. After the completion of the doping control procedure, all samples collected at each doping control station will be delivered to the central doping control station together with the necessary support documentation (doping control protocols) for further registration in the ADAMS system. All samples will be packaged and sent to the WADA accredited anti-doping laboratory in accordance with international standards. All information concerning the doping control program during the Lake Placid 2023 FISU World University Games is confidential according to WADA and FISU requirements. When visiting a doping control station, athletes are required to have accreditation cards.

- The doping control station for Biathlon athletes will be located at the Mt Van Hoevenberg Lodge, on the first (1st) floor, next to the athlete medical station.
- Doping control stations for out of competition controls and outside venue operating hours will be located at medical stations in various locations, including Knowles Hall, Great Escape, Paul Smith's College (the Health Center) and Lake Placid Sports Medicine. If testing outside of competition, athletes may be required to test at the medical station nearest them.

5.9.4 THERAPEUTIC USE EXEMPTIONS (TUES)

Lake Placid 2023 FISU World University Games participants who require Therapeutic Use Exemptions (TUE) must make an appropriate request to their National Anti-Doping Organization or International Federation before participation in the Lake Placid 2023 FISU Games. The World Anti-Doping Agency International Standard for TUEs will be applied in this case. Every athlete who uses a substance or a method included in the list of prohibited substances is obliged to be in possession of a completed TUE form of the established standard from the moment of arrival until the departure from the Village after the Closing Ceremony of the Lake Placid 2023 FISU World University Games.

If there is a need for the use of a prohibited substance or a prohibited method for medical reasons after the opening of the Lake Placid 2023 FISU Games, an athlete must submit a request for TUE to the FISU International Medical Committee as a matter of urgency. The responsibility for completing the TUE form and submitting an application to the FISU International Medical Committee lies with the delegation physician.

If the delegation does not have its own physician, the athlete shall submit a request for TUE to the FISU International Medical Committee, with the attachment of medical documentation confirming the need for providing him/her with emergency medical treatment.

5.9.5 STRUCTURE

Chair of FISU International Medical Committee	Dr. Dusan Hamar
OC Head of Medical Services & Doping Control	Dr. Tracey Viola

5.10 Mascot and Medals

5.10.1 MASCOT CEREMONY

Mascot Ceremonies will take place following the completion of each competition in the immediate vicinity of the Field of Play.

5.10.2 MEDAL CEREMONY

- The Medal Ceremonies will be held in the Medals Plaza at Mt Van Hoevenberg as well as Mid's Park according to the detailed day-by-day schedule as found in Section 5.7.
- The official language for the Medal Ceremonies will be English.
- The medalists from each event must attend the Medal Ceremony. In the event that a medalist is unable to attend, the medal is delivered to an official of the relevant delegation. He/she must be dressed in the delegation's official outfit. He/she must not mount the podium but stand behind it. The awarders will hand the medal and mascot over the podium. During the FISU Anthem, the delegation official stands behind the podium.
- In the event that all medalists cannot be present, the Medal Ceremony will be postponed.
- If an athlete or team is disqualified, the medal(s) shall be returned to FISU.

During the Medal Ceremony:

- The athletes are not allowed to bring any national flag or any other national, cultural or religious symbol on the podium.
- The national flags of the first three (3) medalists will be raised and the only anthem played will be the FISU Anthem, the Gaudeamus Igitur.
- During the playing of the FISU Anthem and the raising of the flags, athletes shall face the flags and always conduct themselves in a dignified manner. No national anthem is played during the ceremony.
- Athletes are expected to take off their caps and sunglasses when receiving their medal and keep items in hand throughout the ceremony (i.e., playing of the FISU Anthem and raising of the flags).
- Athletes, authorities and accompanying persons are required to face the flags while they are being raised and the FISU Anthem is being played.

- The medalists are expected to attend the ceremony in the uniforms they wore at the Opening Ceremony but are also allowed to attend the official ceremony wearing sport uniforms when the ceremony takes place immediately following the competition.
- After the medals are awarded, athletes must remain in the awarding area for photos on the podium with medals.
- In order to get the best photos, athletes should follow the recommendations of photographers.

5.10.3 DIPLOMA OF HONOR

- The athletes ranked one (1) to eight (8) will receive a Diploma of Honor.
- For team events, each team member, from teams ranked one (1) to six (6), will receive a personal Diploma of Honor mentioning his/her name and the team ranking.
- Diplomas of Honor are not distributed at the Medal Ceremony. They will be handed to the Head of Delegation or an appointed representative of each delegation prior to departure.
- If an athlete or team is disqualified, the diploma(s) shall be returned to FISU.

5.11 Media Interviews

Venue Media Centers for media representatives are organized at all Lake Placid 2023 FISU World University Games competition sites.

At the conclusion of a competition, all athletes must leave the Field of Play through the mixed zone, where brief interviews will be held. Every athlete/coach should be ready to communicate with media representatives upon their request. Team representatives should be prepared to provide their athletes with a warm jacket or a blanket prior to entering the mixed zone.

A volunteer from the Venue Media Center will coordinate the exchanges between athletes/coaches and media. Support for translation in English will be provided during the mixed zone interviews. If an athlete/coach does not speak this language, they should invite their team interpreter to the mixed zone.

Media conferences are held at the beginning and the end of the Lake Placid 2023 FISU World University Games.

5.12 Sport Information Services

5.12.1 ONLINE SPORT INFORMATION SERVICES

Online information will be available on the Lake Placid 2023 FISU World University Games' official website: <https://www.lakeplacid2023.com/>

In addition, more detailed information and publications for teams can be accessed under the following link: <https://www.lakeplacid2023.com/delegation-services/publications/>

5.12.2 SPORT INFORMATION CENTER (SIC)

The Sport Information Center is located at Paul Smith's College, in the Pinewood Room.

The following services will be provided during the Lake Placid 2023 FISU World University Games:

- Competition schedule and updates
- Training schedule and updates
- Technical meeting information
- Distribution of daily sport results
- The Sport Information Center will operate from 07:00 to 23:00, 11-22 January 2023.

5.12.3 SPORT INFORMATION AT THE VENUE

- A Sport Information Desk (SID) will be located at each venue, providing the most recent information related to the competitions and receiving requests from the team representative(s).
- The Sport Information Desk will operate from 11 January 2023 until the final day of competition in accordance with the competitions and training schedules (one (1) hour before and after the events).

5.12.4 SPORT INFORMATION DISTRIBUTION

Information	Online	Venue	SIC	ITO Hotel
Competition Schedule	+	+	+	+
Start List/ Result List	+	+	+	+
Change to Schedule	+	+	+	+
Special Announcements	+	+	+	+
Weather Information	+	+	+	+
Medal Table	+			
Technical Handbook	+			
FISU Regulations	+			
Other Information		+	+	+
Answer to Team Questions		+	+	+

6. SERVICE INFORMATION

6.1 Accreditation

Accreditation can be obtained by the HoD at the Welcome Center (Main Accreditation Center)

Location: Olympic Conference Center (Third (3rd) Floor)
2634 Main Street Lake Placid, NY 12946

Operating Dates: 7-23 January 2023

Operating Hours (subject to change):

- 7-14 January, 09:00 – 21:00
- 15-23 January, 09:00 – 15:00

IMPORTANT: A personalized accreditation card with a photo, name and function of the cardholder carries information about the access rights and privileges available to him/her. Upon arrival, the accreditation card, equipped with a QR-code, enables members of delegations a 24-hour temporary access to the Lake Placid 2023 FISU World University Games venues in accordance with access rights on the accreditation card. The temporary access does not allow participation in the competition. After the CIC's approval, the accreditation card will be fully activated.

6.2 Radio Frequency Control

At all Lake Placid 2023 FISU World University Games venues, any use of frequencies (e.g., on walkie-talkies, radio stations, wireless cameras, Wi-Fi access points, wireless microphones, FM-transmitters and any other wireless equipment), will require a temporary radio license from the Organizing Committee (OC). All Delegations have been contacted separately regarding radio frequency license requests. If anyone has not received or responded to this communication, please contact delegations@lakeplacid2023.com immediately.

Every wireless device must be registered by the frequency-organizer before it may be used.

- License-free*: wireless microphones and in-ear monitoring systems, frequency range: 470-694 MHz
- License obligation: walkie-talkies (two (2)-way radio) and telemetry.

* Only a limited number of shared frequencies are available. Registration is mandatory and such equipment will not have a dedicated channel.

6.3 Insurance and Responsibilities

Participating countries must adhere to the insurance requirements and conditions as stipulated in Section 5.6 of the FISU Winter Games General Regulations for the Lake Placid 2023 FISU World University Games.

6.4 Transportation

6.4.1 TRANSPORTATION SYSTEM FOR ATHLETES AND TEAM OFFICIALS (TA)

The transportation system for athletes and team officials will provide transport services from 8-21 January 2023. Routes in the transportation system for athletes and team officials are marked with the abbreviation “TA” (Transport Athletes). Vehicles are being equipped with placards indicating route number for the individual and team sports and spectating athletes.

Route Number	TA VPS-MVH
Sport	Biathlon
Route	Paul Smith’s College to Mt Van Hoevenberg
Distance to the Venue	29 miles (47 km)
Travel Time	46 min

Transportation Service for Spectating Athletes and Officials

Scheduled buses are provided between Lake Placid and the competition venues for spectating athletes from 13-21 January 2023. Buses will operate in accordance with the competition schedule. All athletes and officials, regardless of their delegation and sport, will have access to the bus transportation systems TS.

Detailed information will be available in the [Transportation Guide](#) for delegations.

6.5 Food and Beverages

Athlete dining will be at Paul Smith’s College in the Lakeside Dining Hall from 7-24 January 2023. The first meal will be provided on 7 January for lunch at 12:00. The last meal will be provided on 24 January until 10:30.

6.5.1 MEALTIMES

Breakfast: 05:30-10:30
Lunch: 11:00-16:00
Dinner: 17:00-22:30
Late Snack: 22:30-00:00

6.5.2 FNB SERVICES AT THE COMPETITION VENUES

- An athletes’ lounge will be providing snacks one (1) hour prior to the competition until one (1) hour after the competition. This service is provided from the start of the first official training.
- On venue meals for athletes and delegation officials will also be provided during competition days.

- Meals to be offered according to the schedule below.
 - 11-22 January: Lunch for BTH coaching staff.

6.6 Weather and Climate

Lake Placid averages 102 inches (259cm) of snow per year while the U.S. average is 28 inches (71.12 cm) of snow per year, with daily temperatures averaging 25°F to 1°F (-3°C to -17°C).

Weather information can be picked up at Sport Information Centers at each of the Villages as well as other locations, including on the Lake Placid 2023 FISU Games website.

6.7 Medical Services

6.7.1 CONDITIONS OF MEDICAL ASSISTANCE

During the Lake Placid 2023 FISU World University Games, in the case of life-threatening diseases and conditions, emergency medical assistance in any situation is provided to all client groups.

- Immediate (except for emergency) and planned medical care is provided based on:
 - an obligatory medical insurance agreement;
 - a paid medical service agreement;
 - a voluntary health insurance agreement.

6.7.2 MEDICAL SUPPORT STRUCTURE

- Medical stations for athletes and spectators at the competition venues
- Mobile medical crews in the Field of Play of the competition venues
- Ambulance crews at the competition venues
- Dedicated hospitals and specialized medical facilities

*Please refer to the Medical Services Guide for more details.

6.7.3 MEDICAL SUPPORT IN THE ACCOMMODATION SITES

- Medical services will be offered on site at Paul Smith's College. Details can be found in the [Medical Services Guide](#).

6.7.4 DEDICATED HOSPITALS AND SPECIALIZED MEDICAL FACILITIES



- The Adirondack Medical Center is located at 203 Old Military Road, Lake Placid, NY 12946.
- Phone number: 518-523-3311

7. OC CONTACTS

Title	Email
Accreditation	accreditation@lakeplacid2023.com
Sport Entries	sportentries@lakeplacid2023.com
Delegation Services	delegations@lakeplacid2023.com
ITO Service Desk	itoservices@lakeplacid2023.com

8. APPENDICES

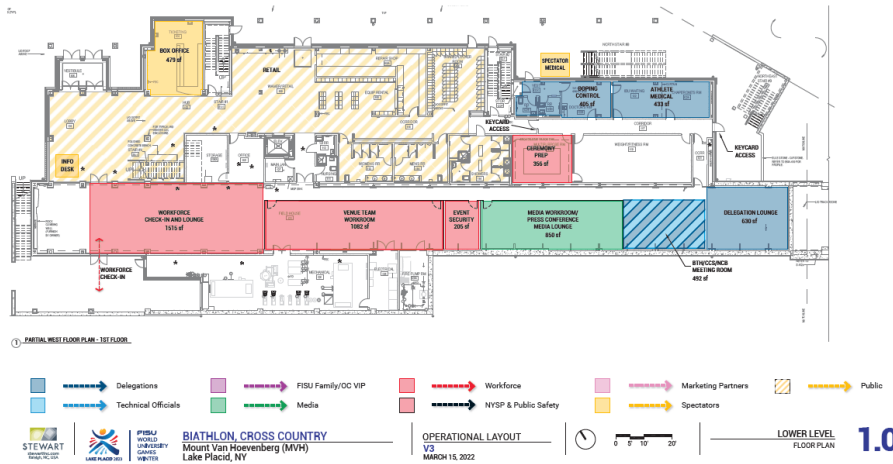
8.1 Lake Placid 2023 FISU World University Games Competition Schedule

<div>  <div> COMPETITION SCHEDULE LAKE PLACID 2023 FISU WORLD UNIVERSITY GAMES </div>  </div>													
<div> VERSION: ENOV 2022 15 Jan 2023 (Last updated: 15 Jan 2023) </div>													
	DAY 1 WED 11 January	DAY 2 THU 12 January	DAY 3 FRI 13 January	DAY 4 SAT 14 January	DAY 5 SUN 15 January	DAY 6 MON 16 January	DAY 7 TUE 17 January	DAY 8 WED 18 January	DAY 9 THU 19 January	DAY 10 FRI 20 January	DAY 11 SAT 21 January	DAY 12 SUN 22 January	REAL COUNT
ICE SPORTS	CEREMONIES Opening Ceremony 17:00-18:00	Opening Ceremony 17:00-18:00	Opening Ceremony 17:00-18:00	Opening Ceremony 17:00-18:00	Opening Ceremony 17:00-18:00	Opening Ceremony 17:00-18:00	Opening Ceremony 17:00-18:00	Opening Ceremony 17:00-18:00	Opening Ceremony 17:00-18:00	Opening Ceremony 17:00-18:00	Opening Ceremony 17:00-18:00	Opening Ceremony 17:00-18:00	0
	ALPINE SKIING 18:00-19:00	Alpine Skiing 18:00-19:00	Alpine Skiing 18:00-19:00	Alpine Skiing 18:00-19:00	Alpine Skiing 18:00-19:00	Alpine Skiing 18:00-19:00	Alpine Skiing 18:00-19:00	Alpine Skiing 18:00-19:00	Alpine Skiing 18:00-19:00	Alpine Skiing 18:00-19:00	Alpine Skiing 18:00-19:00	Alpine Skiing 18:00-19:00	1
	FIGURE SKATING 18:00-19:00	Figure Skating 18:00-19:00	Figure Skating 18:00-19:00	Figure Skating 18:00-19:00	Figure Skating 18:00-19:00	Figure Skating 18:00-19:00	Figure Skating 18:00-19:00	Figure Skating 18:00-19:00	Figure Skating 18:00-19:00	Figure Skating 18:00-19:00	Figure Skating 18:00-19:00	Figure Skating 18:00-19:00	2
	ICE HOCKEY 18:00-19:00	Ice Hockey 18:00-19:00	Ice Hockey 18:00-19:00	Ice Hockey 18:00-19:00	Ice Hockey 18:00-19:00	Ice Hockey 18:00-19:00	Ice Hockey 18:00-19:00	Ice Hockey 18:00-19:00	Ice Hockey 18:00-19:00	Ice Hockey 18:00-19:00	Ice Hockey 18:00-19:00	Ice Hockey 18:00-19:00	3
	ICE HOCKEY (WOMEN) 18:00-19:00	Ice Hockey (Women) 18:00-19:00	Ice Hockey (Women) 18:00-19:00	Ice Hockey (Women) 18:00-19:00	Ice Hockey (Women) 18:00-19:00	Ice Hockey (Women) 18:00-19:00	Ice Hockey (Women) 18:00-19:00	Ice Hockey (Women) 18:00-19:00	Ice Hockey (Women) 18:00-19:00	Ice Hockey (Women) 18:00-19:00	Ice Hockey (Women) 18:00-19:00	Ice Hockey (Women) 18:00-19:00	4
	SHORT TRACK 18:00-19:00	Short Track 18:00-19:00	Short Track 18:00-19:00	Short Track 18:00-19:00	Short Track 18:00-19:00	Short Track 18:00-19:00	Short Track 18:00-19:00	Short Track 18:00-19:00	Short Track 18:00-19:00	Short Track 18:00-19:00	Short Track 18:00-19:00	Short Track 18:00-19:00	5
	SPEED SKATING 18:00-19:00	Speed Skating 18:00-19:00	Speed Skating 18:00-19:00	Speed Skating 18:00-19:00	Speed Skating 18:00-19:00	Speed Skating 18:00-19:00	Speed Skating 18:00-19:00	Speed Skating 18:00-19:00	Speed Skating 18:00-19:00	Speed Skating 18:00-19:00	Speed Skating 18:00-19:00	Speed Skating 18:00-19:00	6
	ICE HOCKEY (WOMEN) 18:00-19:00	Ice Hockey (Women) 18:00-19:00	Ice Hockey (Women) 18:00-19:00	Ice Hockey (Women) 18:00-19:00	Ice Hockey (Women) 18:00-19:00	Ice Hockey (Women) 18:00-19:00	Ice Hockey (Women) 18:00-19:00	Ice Hockey (Women) 18:00-19:00	Ice Hockey (Women) 18:00-19:00	Ice Hockey (Women) 18:00-19:00	Ice Hockey (Women) 18:00-19:00	Ice Hockey (Women) 18:00-19:00	7
	ICE HOCKEY (WOMEN) 18:00-19:00	Ice Hockey (Women) 18:00-19:00	Ice Hockey (Women) 18:00-19:00	Ice Hockey (Women) 18:00-19:00	Ice Hockey (Women) 18:00-19:00	Ice Hockey (Women) 18:00-19:00	Ice Hockey (Women) 18:00-19:00	Ice Hockey (Women) 18:00-19:00	Ice Hockey (Women) 18:00-19:00	Ice Hockey (Women) 18:00-19:00	Ice Hockey (Women) 18:00-19:00	Ice Hockey (Women) 18:00-19:00	8
	ICE HOCKEY (WOMEN) 18:00-19:00	Ice Hockey (Women) 18:00-19:00	Ice Hockey (Women) 18:00-19:00	Ice Hockey (Women) 18:00-19:00	Ice Hockey (Women) 18:00-19:00	Ice Hockey (Women) 18:00-19:00	Ice Hockey (Women) 18:00-19:00	Ice Hockey (Women) 18:00-19:00	Ice Hockey (Women) 18:00-19:00	Ice Hockey (Women) 18:00-19:00	Ice Hockey (Women) 18:00-19:00	Ice Hockey (Women) 18:00-19:00	9
	ICE HOCKEY (WOMEN) 18:00-19:00	Ice Hockey (Women) 18:00-19:00	Ice Hockey (Women) 18:00-19:00	Ice Hockey (Women) 18:00-19:00	Ice Hockey (Women) 18:00-19:00	Ice Hockey (Women) 18:00-19:00	Ice Hockey (Women) 18:00-19:00	Ice Hockey (Women) 18:00-19:00	Ice Hockey (Women) 18:00-19:00	Ice Hockey (Women) 18:00-19:00	Ice Hockey (Women) 18:00-19:00	Ice Hockey (Women) 18:00-19:00	10
<div> MEAL CEREONIES </div>													
<div> LEGEND </div>													
<div> LEGEND </div>													

8.2 Venue Layouts

8.2.1 VENUE PLANS

MVH
BTH
CCS

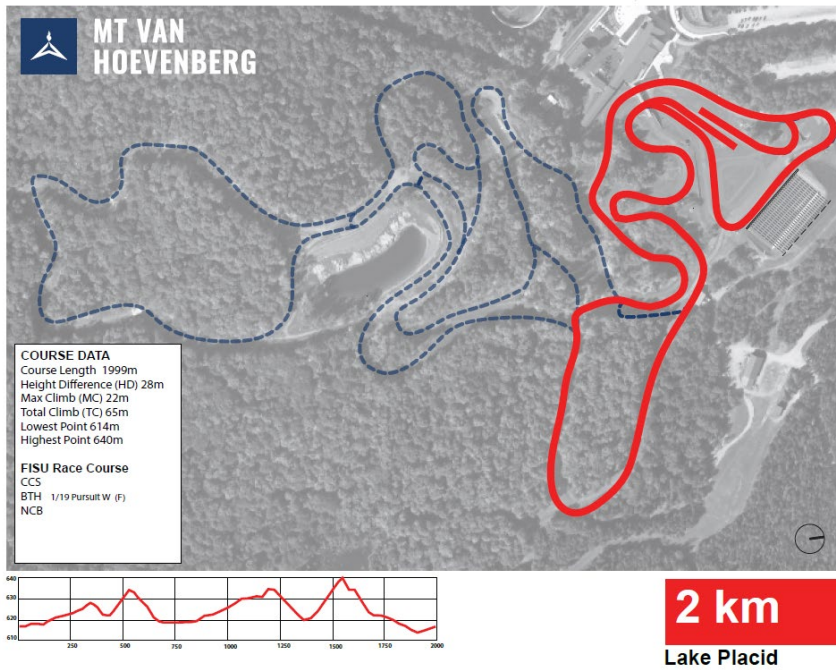
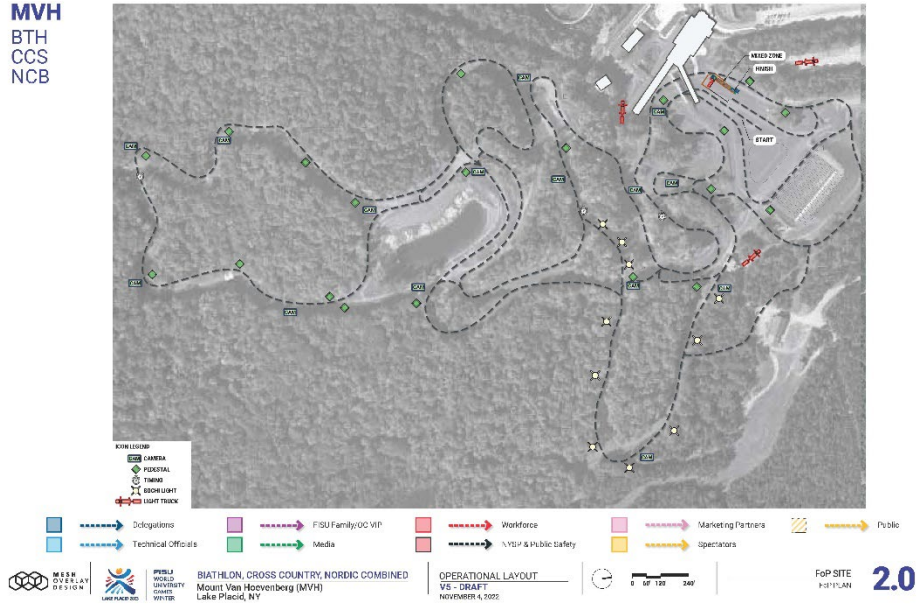


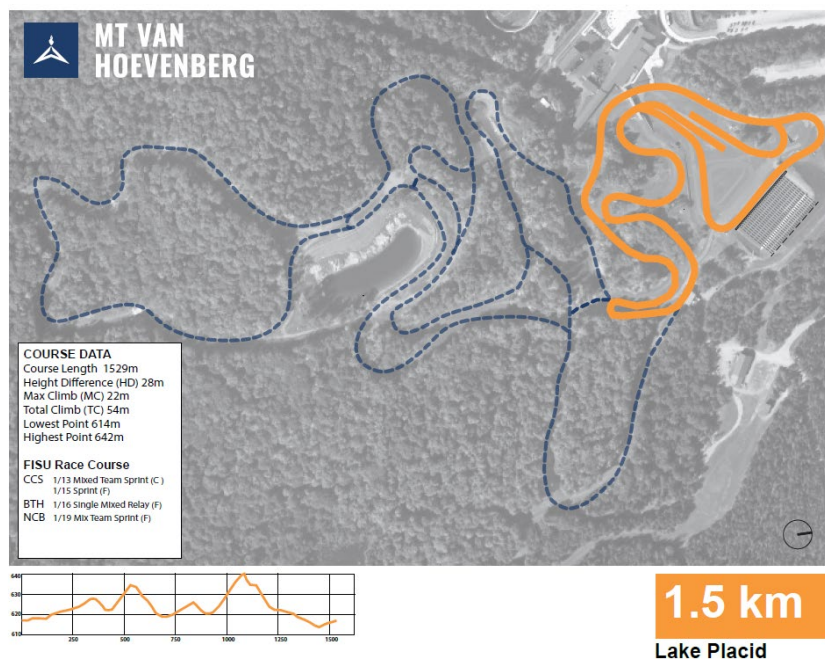
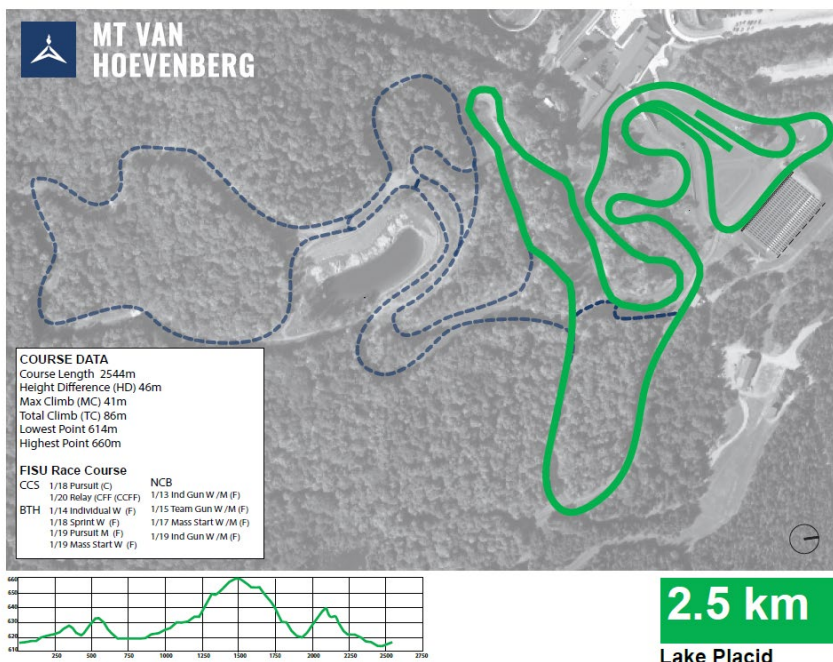
MVH
BTH
CCS

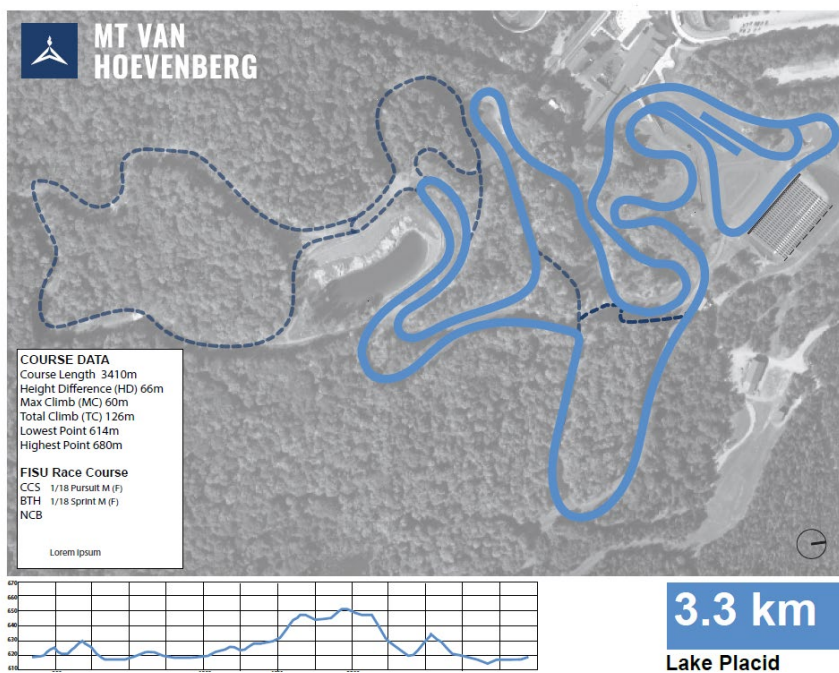
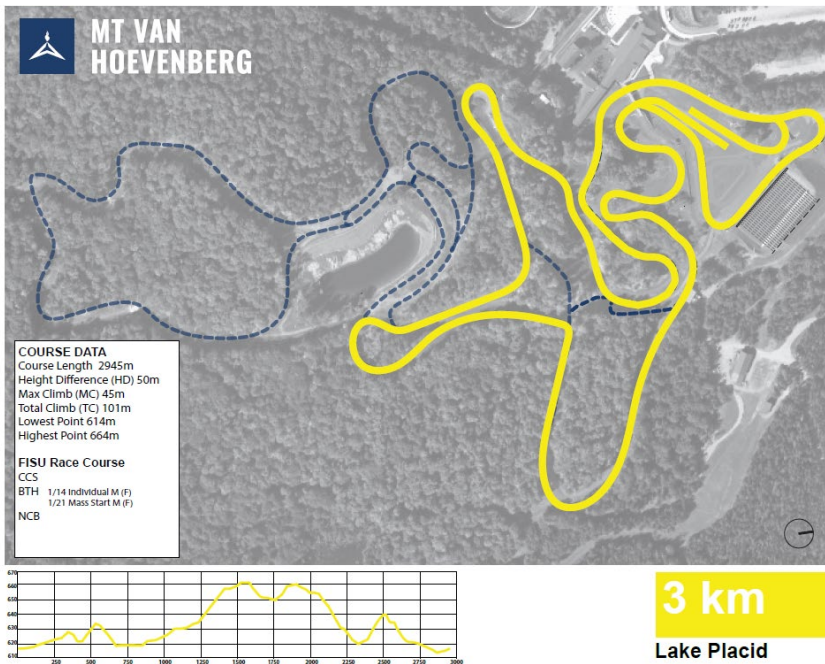


8.2.2 OVERVIEW OF TRAILS

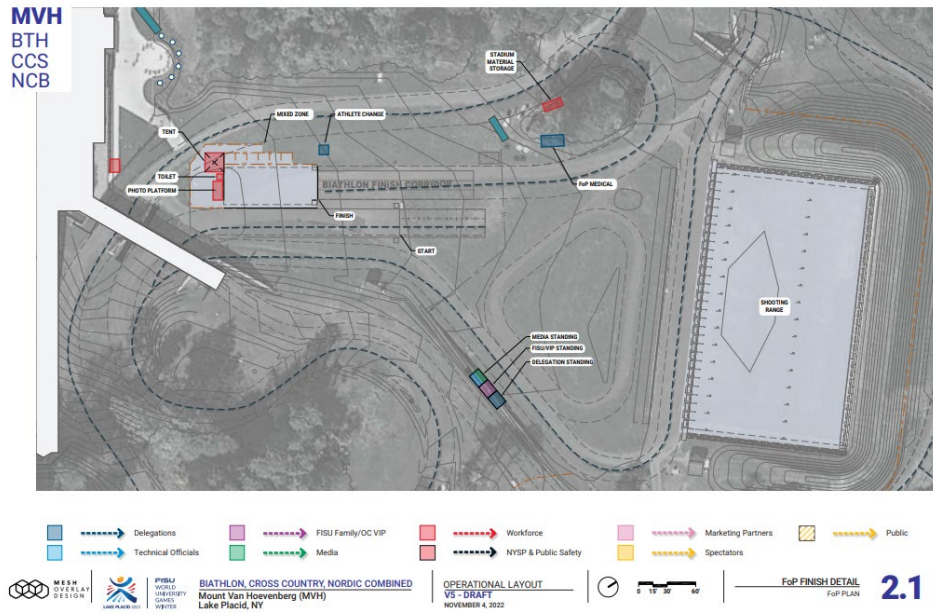
MVH
BTH
CCS
NCB







8.3 Geographical Overview Venues





FISU
WORLD
UNIVERSITY
GAMES
WINTER