



**FISU**  
WORLD  
UNIVERSITY  
GAMES  
WINTER

# **TECHNICAL HANDBOOK**

## **SNOWBOARD**

**December 2022**



## TABLE OF CONTENTS

1. Welcome Messages .....	5
2. Abbreviations .....	8
3. FISU International Technical Committee .....	9
4. General Information .....	10
4.1 Lake Placid 2023 FISU World University Games .....	10
4.2 Competition Schedule .....	10
4.3 Opening and Closing Ceremonies .....	11
5. Competition Information .....	11
5.1 Technical Committee .....	11
5.2 International Technical Officials .....	12
5.3 Competition Structural Chart .....	12
5.4 Technical Regulations .....	12
5.4.1 Jury Composition .....	13
5.4.2 Protest and Appeal .....	14
5.5. Competition Format .....	14
5.5.1 Parallel Giant Slalom (PGS) and Parallel Slalom (PSL) .....	14
5.5.2 Slopestyle (SS) .....	15
5.5.3 Big Air (BA) .....	15
5.5.4 Snowboard Cross (SBX) .....	16
5.6 Competition and Training Venue Information .....	16
5.6.1 General Information .....	16
5.6.2 Venue Layouts .....	17
5.6.3 Slopes Technical Data .....	17
5.7 Day-by-Day Schedule .....	17
5.7.1 Ceremonies .....	19
5.7.2 Training .....	20
5.7.3 Reserve Day .....	20
5.7.4 General Technical Meeting .....	20
5.8 Equipment .....	20
5.8.1 Storage and waxing rooms .....	20

5.8.2. Waxing Room Equipment .....	21
5.9 Doping Control .....	21
5.9.1 List of Prohibited Substances .....	21
5.9.2 Testing.....	22
5.9.3 Doping Control Stations .....	22
5.9.4 Therapeutic Use Exemptions (TUE) .....	22
5.9.5 Structure .....	23
5.10 Mascots and Medals .....	23
5.10.1 Mascot Ceremony.....	23
5.10.2 Medal Ceremony.....	23
5.10.3 Diploma of Honor.....	24
5.11 Media Interviews .....	24
5.12 Sport Information Services .....	25
5.12.1 Online Sport Information Services .....	25
5.12.2 Sport Information Center (SIC) .....	25
5.12.3 Sport Information at the Venue.....	25
5.12.4 Sport Information Distribution .....	26
6. Service Information.....	26
6.1 Accreditation.....	26
6.2 Radio Frequency Control .....	27
6.3 Insurance and Responsibilities.....	27
6.4 Transportation .....	28
6.4.1 Transportation System for Athletes and Team Officials (TA) .....	28
6.5 Food and Beverages.....	28
6.5.1 Mealtimes .....	28
6.5.2 FNB Services at the Competition Venues .....	29
6.6 Medical Services.....	29
6.6.1 Conditions of Medical Assistance .....	29
6.6.2 Medical Support Structure.....	29
6.6.3 Medical Support in the Accommodation Sites .....	29
6.6.4 Dedicated Hospitals and Specialized Medical Facilities.....	30

6.7 Weather and Climate .....	30
7. OC Contacts.....	30
8. Appendices.....	31
8.1 Lake Placid 2023 FISU World University Games Competition Schedule.....	31
8.2 Venue Layouts.....	32
8.2.1 Venue Plans.....	32
8.2.2 Overview Slopes.....	32
8.3 Geographical Overview Venues .....	34

## 1. WELCOME MESSAGES

*Dear Delegates,  
Dear Friends and Colleagues,*

*Thank you for your participation in the Lake Placid 2023 FISU World University Games. I would like to recognize the Organizing Committee and FISU for their hard work and dedication—without them, this event would not be possible. The past months have been very important as we put together the final touches to welcome the world's best collegiate-athletes to participate in these FISU Games.*

*The recent HoD meeting was very successful and as we get closer to the Lake Placid 2023 FISU Games it becomes even more exciting to call Lake Placid a two-time host, since they held the FISU Games in 1972. It is obvious that international events come naturally to the region, therefore, we are confident that Lake Placid is ready to welcome the world's best collegiate-athletes to their stage once again.*

*We would like to thank each and every one of you for your participation and hope you will spend the next 11 days discovering what this beautiful village in New York State and Adirondack Region has to offer. We are excited to see the result of your hard work and dedication that has gone into the preparation for these Games and are looking forward to having you with us in Lake Placid.*

*I wish you all good luck and hope you have a great stay in Lake Placid!*

*Thank you.*



*Leonz Eder  
Acting President of the  
International University Sports Federation*

*Dear Technical Delegates and Officials,*

*I look forward to welcoming you to Lake Placid, NY and the surrounding North Country region, where the Lake Placid 2023 FISU World University Games will soon be underway. It is a privilege and honor to once again the host the World in our historic village!*

*As a community known for its rich sporting history, Lake Placid is proudly home to the 1932 and 1980 Olympic Winter Games, the 1972 FISU World University Games and countless World Cup and World Championship events. In preparation for the upcoming Lake Placid 2023 FISU Games, the venues have undergone extensive modernizations to provide world class facilities for decades to come, ensuring the continuation of our sporting legacy.*

*I am pleased to welcome you to my hometown and the surrounding North Country region. This technical handbook is intended to provide you with all the information you need to guide you through your time here. I wish each of the participating collegiate-athletes success and hope everyone leaves with unforgettable memories that are shared for years to come!*

*Sincerely,*



Ashley Walden  
Chief Operating Officer of the  
Lake Placid 2023 FISU World University Games

*Dear Delegations,*

*Welcome to the Lake Placid 2023 FISU World University Games! Lake Placid, our Adirondack Region and the State of New York thank you for your dedication to University sport and we welcome you to our home with open arms.*

*As hosts of the 1972 FISU World University Games, we are excited to continue Lake Placid's legacy as a global center of international sport by again welcoming collegiate-athletes from across the globe.*

*The Organizing Committee recognizes our duty to support collegiate-athletes in their efforts to achieve excellence in their chosen disciplines by providing top-of-the-line competition venues and an unforgettable experience. With this in mind, we have worked to ensure that all participants have an opportunity to showcase their talents as they compete with cooperation and respect for one another.*

*Enjoy competition, enjoy our village, our region and our state so that you may leave Lake Placid with added and renewed feelings about the positive benefits of international University sport.*

*Please reach out to us as you may wish.*

*With all good wishes,*



*James B. McKenna  
President of the  
Lake Placid 2023 FISU World University Games*

## 2. ABBREVIATIONS

Abbreviation	Name in full
ADAMS	Anti-Doping Administration and Management System
BA	Big Air
CIC	FISU International Control Committee
CMI	FISU International Medical Committee
CPH	Crowne Plaza Hotel
CT	FISU Technical Committee
EC	FISU Executive Committee
FIS	International Ski Federation
FISU	International University Sports Federation
FNB	Food & Beverage
GOM	Gore Mountain
HoD	Head of Delegation
IF	International Federation
ITC	FISU World University Games International Technical Committee
ITO	International Technical Official
LOC	Local Organizing Committee
NADO	National Anti-Doping Organization
NF	National Federation
NTO	National Technical Official
NUSF	National University Sports Federation
OC	Organizing Committee
OCN	Olympic Center



PGS	Parallel Giant Slalom
PSL	Parallel Slalom
RD	Race Director
SBD	Snowboard
SBX	Snowboard Cross
SIC	Sports Information Center
SID	Sports Information Desk
SS	Slopestyle
TD	Technical Delegate
TCC	FISU Technical Committee Chair
TCM	Technical Committee Meeting
TO	Technical Official
TUE	Therapeutic Use Exemptions
VS1	Great Escape
WADA	World Anti-Doping Agency

### 3. FISU INTERNATIONAL TECHNICAL COMMITTEE

Position	First Name	Last Name	Country
FISU TCC ALP	Matjaz	Kranjc	SLO
FISU TCC BTH	Ondrej	Rybar	CZE
FISU TCC CCS	Zofia Stefania	Kielpinska	POL
FISU TCC NCB	Karl	Lustenberger	SUI
FISU TCC SJP	Paul	Ganzenhuber	AUT
FISU TCC FRS	Magnus	Ferry	SWE

FISU TCC SBD	Ola	Sundekvist	SWE
FISU TCC CUR	Scott	Arnold	CAN
FISU TCC IHO	Reto	Bertolotti	SUI
FISU TCC IHO	Igor	Nemecek	SVK
FISU TCC FSK	Dingding	Liu	CHN
FISU TCC STK	So Hee	Kim	KOR
FISU TCC SSK	Moyca	Stoffel	CAN

## 4. GENERAL INFORMATION

### 4.1 Lake Placid 2023 FISU World University Games

Date: 12- 22 January 2023

Location: Lake Placid, New York

Sports Program: 12 sports, 86 Medal Events

Venues: 9 venues

### 4.2 Competition Schedule



## 4.3 Opening and Closing Ceremonies

### Opening Ceremony

Date: 12 January 2023

Location: Olympic Center, 1980 Herb Brooks Arena

Beginning of Ceremony: 19:00

### Closing Ceremony

Date: 22 January 2023

Location: Olympic Center, 1980 Herb Brooks Arena

Beginning of Ceremony: 17:10

## 5. COMPETITION INFORMATION

### 5.1 Technical Committee

Technical Committee Chair	Ola Sundekvist (SWE)
FIS Technical Delegates	Fredrik Bergström (PGS/PSL) (SWE) Jim Sidorchuk (SBX) (CAN) Lukasz Ligocki (SS/BA) (POL)
Sport Managers	Ted Martin (Cross Events, PGS/PSL) (USA) Mike Kirchner (SS/BA) (USA)
Chief of Competition – Cross	Ted Martin (USA)
Chief of Course - Cross	Paul Plotz (CAN)
Chief of Competition – SS & BA	Mike Kirchner (USA)
Chief of Course – SS & BA	Tommi Ylianttila (USA)
Chief of Competition – PGS & PSL	Ted Martin (USA)

## 5.2 International Technical Officials

Head Judge Snowboard	Geoff Peterson (CAN)
Judge Snowboard	Matt Jennings (USA)
Judge Snowboard	Catie Cook (USA)
Judge Snowboard	Marcello Centurione (CAN)
Judge Snowboard	Tim Zaugg (SUI)
Judge Snowboard	Marin Sladkarov (BUL)
Judge Snowboard	Pawel Pawluczuk (POL)

## 5.3 Competition Structural Chart

Venue Manager		FISU TCC
James Bayse		Ola Sundekvist
Security	Sport Managers	FIS TDs
Michael Ryan	Ted Martin (Cross Events, PGS/PSL)	Fredrik Bergström (PGS /PSL)
	Mike Kirchner (SS/BA)	
Workforce/Volunteers		
Bethany Valenze		

## 5.4 Technical Regulations

The Snowboard events will be organized in accordance with the most recent technical regulations of the International Ski Federation (FIS), except when specifically amended by these regulations or by the FISU Games International Technical Committee (FISU Games ITC).



The program and duration of the competitions will be fixed by the FISU Executive Committee in agreement with the Organizing Committee and the FISU Games ITC. In principle, the program will last eight (8) days and will include the following events:

Men	Women
Parallel Giant Slalom (PGS)	Parallel Giant Slalom (PGS)
Parallel Slalom (PSL)	Parallel Slalom (PSL)
Snowboard Cross (SBX)	Snowboard Cross (SBX)
Slopestyle (SS)	Slopestyle (SS)
Big Air (BA)	Big Air (BA)

Each country is authorized to enter a maximum number of athletes per event as follows:

- Parallel Giant Slalom: Four (4) athletes (per gender)
- Parallel Slalom: Four (4) athletes (per gender)
- Snowboard Cross: Four (4) athletes (per gender)
- Slopestyle: Four (4) athletes (per gender)
- Big Air: Four (4) athletes (per gender)

At the 1st General Technical Meeting, the Head of Delegation or his/her representative shall confirm and sign the official entry list of competitors. Only competitors with an active FIS code are allowed to participate in each Snowboard event. Entries are controlled by the Organizing Committee and the FIS Technical Delegate.

Only with an accreditation card approved by the CIC can an athlete be considered for the draw of a starting list and be entitled to participate in any of the competitions.

#### 5.4.1 JURY COMPOSITION

In accordance with the FIS ICR Rules, the Jury will be composed by the following members:

- TD for all competitions
- Chief of Competition or the Chief of Slope for all competitions
- Referee for Snowboard Cross events
- Head Judge for the Slopestyle and Big Air competitions
- Referee for all Alpine competitions
- FIS Race Director

Each Jury member has one (1) vote, with the Chairman having the deciding vote. At the Lake Placid 2023 FISU World University Games, the FISU Technical Committee Chair, as approved by

FIS, has a voting right as a member of the Jury for all competitions and will be acting as FIS Race/Contest Director during the events.

#### **5.4.2 PROTEST AND APPEAL**

Any protest of a sport or disciplinary nature must reach the Jury according to the regulations laid down by FIS. Such protest must be accompanied by a deposit in cash of CHF 100, or equivalent in the Organizing Committee currency.

This deposit will be returned if the protest is upheld. Each Head of Delegation or his/her deputy is authorized to lodge an appeal against the decision of the Jury.

Any decision of the Jury of Appeal or equivalent authority of a sport is final and must be reported immediately to the Head of Delegation of the concerned country.

Any sport disciplinary situation, which cannot be satisfactorily resolved by the Sport Technical Committee (TC) and the sport specific disciplinary regulations, will be reported to the FISU Disciplinary Committee for further action to be taken. Where appropriate, a report will also be sent to FIS.

### **5.5. Competition Format**

#### **5.5.1 PARALLEL GIANT SLALOM (PGS) AND PARALLEL SLALOM (PSL)**

##### **Qualification Phase**

- Qualification phase consists of two (2) timed runs: the Qualification run and the Elimination run, for all participants.
- The FIS points list will be used to determine the starting order (see rule “6604 Draw/Start Order” quoted below) for the Qualification run.
- The start order of the Elimination run will be according to rule “6504.1.2 2nd run – Elimination Run”, see further below.
- The final result of the Qualification phase will be the total time of the two (2) runs.
- Tie breaking in Qualification: Refer to rule “6504.1.2 2nd run – Elimination Run” below.
- The top 16 competitors per gender, with a valid time, advance to finals.

##### **Finals**

- Single Run Knock-out Final Format
- -1/8-finals - 1/4-finals - 1/2-finals- Small and Big Finals
- Jury can make changes during the TCM

## Draw/Start Order

- The most current FIS points list, on the date of the draw, must be used for the seeding of competitors. A competitor who does not appear in the latest valid FIS points list shall be assigned to the group of competitors without points.
- The competitors will be sorted into rank order of the current FIS points list. The first (1st) group will consist of 16 and can be reduced to 10 if there are less than 30 competitors or such other number as determined by the Jury.
- A random draw will take place for the first (1st) group. The remaining competitors will be seeded according to their FIS points list rank. All competitors without points will be drawn last.
- If the competitors are tied, the better rank in the second (2nd) category, FIS points or World Cup Starting List (WCSL), will decide their position. If they are still tied after using the second (2nd) category, their position will be decided by a draw.

## 2nd run – Elimination Run

- The start order of the second (2nd) run will be the reverse order of the results of the first (1st) run of each course.
- Competitors will exchange their course (red competitors of first (1st) run will compete on blue course on second (2nd) run and vice-versa).
- The final results after the elimination run will be the total time of the two (2) runs. The top 16 competitors per gender, with a valid time, advance to the final phase.
- If two (2) or more competitors advancing to the final phase, including the last eligible position for the finals (4th, 8th, 16th), are tied after two (2) qualification runs, the ties will be broken by the best run of two (2).
- If they are still tied, the tie will be broken by the seeding position. The competitor with the lower seeding position will receive the higher rank.

### 5.5.2 SLOPESTYLE (SS)

- Qualification: Heat System with one (1) or two (2) heats
- Seeded by FIS ICR SB Rules
- Qualification: two (2) runs/best run counts
- Finals (12 M/6 W): two (2) runs/best run counts
- Same start orders for final run 1 and final run 2 based on results from qualification
- Six (6) scoring Judges shall discard the high and low scores and the remaining scores will be counted
- Use TV for Video Judging system

### 5.5.3 BIG AIR (BA)

- Qualification: Heat System with one (1) or two (2) heats
- Seeded by FIS ICR SB Rules

- Qualification: two (2) runs/best run counts
- Finals (12 M/6 W): two (2) runs/best run counts
- Same start orders for final run 1 and final run 2 based on results from qualification
- Six (6) scoring Judges shall discard the high and low scores and the remaining scores will be counted
- Use TV for Video Judging system

#### 5.5.4 SNOWBOARD CROSS (SBX)

##### Qualification phase consists of one (1) timed run

- Top 20 to 32 Men and top 20 to 32 Women go further to Double Panel Round Robin.
- Tie breaking in Qualification in accordance with FIS ICR Art. 5501.1.6

Note: If more than 32 competitors, top 28 will advance directly to final phase, remaining competitors will compete in heats formats for the last four (4) spots in the final phase

##### Finals

- Final phase is conducted as Double Panel Round Robin
- There will be 20 to 32 competitors seeded into the Group Heats, with two panels based upon the qualification (FIS ICR Art. 5502.1.3.13). In each of the panels there will be five (5) Group Heat rounds, where every competitor will compete in each round, against every other competitor of their panel (FIS ICR Art. 5502.3.1.2)
- The four (4) top scoring competitors from the Round Robin format per panel will qualify for the semi-finals
- Tie breaking rules for Round Robin are in accordance with FIS ICR Art. 5502.3.2 and 5502.3.3
- The seeding for semi-finals is in accordance with FIS ICR Art. 5502.3.9.2
- Tie breaking rules in semi-finals is in accordance with FIS ICR Art. 5502.3.11
- The 1st and 2nd ranked competitor in each semi-final will qualify for the Big Final. The 3rd and 4th ranked competitor in each semi-final will qualify for the Small Final.
- Jury can make changes on TCM

## 5.6 Competition and Training Venue Information

### 5.6.1 GENERAL INFORMATION

Venue	Function	Location	Distance from accommodation to venue
Gore Mountain	Training/ Competition	793 Peaceful Valley Rd, North Creek, NY 12853	32 miles (51.5 km)



## 5.6.2 VENUE LAYOUTS

See Appendix, Section 8.2.

## 5.6.3 SLOPES TECHNICAL DATA

See Appendix, Section 8.2.2.

## 5.7 Day-by-Day Schedule

*“For all televised events, the competition session begins at the stated time, but the actual competition/play will begin five (5) minutes afterwards for broadcast purposes.”*

Key	
Training	Light Blue
Competition	Dark Blue
Reserve Days	White
Meeting Days/Additional Information	Yellow
Ceremonies/Social Events	Red

SPORT	DATE	DAY	START TIME	FINISH TIME	EVENT NAME	VENUE
Snowboard	8-Jan-23	SUN	TBD		Venue Inspection Visit	GOM
Snowboard	9-Jan-23	MON	17:00	19:00	FISU International Technical Committee Meeting (ITC)	CPH
Snowboard	10-Jan-23	TUE	16:00	17:00	1st Technical Meeting SBD	VS1
Snowboard	10-Jan-23	TUE	17:00	18:00	1st General Technical Meeting SBX W / M (GTM)	VS1
Snowboard	11-Jan-23	WED	09:15	09:45	Snowboard Cross - Inspection W / M	GOM
Snowboard	11-Jan-23	WED	10:00	12:00	Snowboard Cross Official Training W / M	GOM
Snowboard	11-Jan-23	WED	13:00	14:00	Team Captain's Meeting Snowboard Cross - Draw W / M	GOM
Snowboard	12-Jan-23	THU	09:45	10:15	Snowboard Cross Inspection W / M	GOM
Snowboard	12-Jan-23	THU	10:30	12:30	Snowboard Cross Official Training W / M	GOM
Snowboard	12-Jan-23	THU	13:00	14:00	SBX Qualification Run "Seeding Round Robin"	GOM

All	12-Jan-23	THU	19:00	20:30	Opening Ceremony	OCN
Snowboard	13-Jan-23	FRI	08:45	09:15	Snowboard Cross Inspection W / M	GOM
Snowboard	13-Jan-23	FRI	09:30	10:15	Snowboard Cross Official Training W / M	GOM
Snowboard	13-Jan-23	FRI	10:30	13:00	SBX Qualification phase "Round Robin"	GOM
Snowboard	13-Jan-23	FRI	13:30	14:00	Snowboard Cross SF and Finals W / M	GOM
Snowboard	13-Jan-23	FRI	14:00	14:15	Mascot Ceremony SBX W / M	GOM
Snowboard	13-Jan-23	FRI	14:45	15:00	Medal Ceremony SBX W / M	GOM
Snowboard	14-Jan-23	SAT	18:00	19:00	Team Captains Meeting Slopestyle W / M	VS1
Snowboard	14-Jan-23	SAT			SBX Reserve Day	GOM
Snowboard	15-Jan-23	SUN	12:15	12:30	Slopestyle Inspection W / M	GOM
Snowboard	15-Jan-23	SUN	13:00	15:00	Official Training Slopestyle W / M	GOM
Snowboard	16-Jan-23	MON	13:00	15:00	Official Training Slopestyle W / M	GOM
Snowboard	16-Jan-23	MON	15:30	16:30	Team Captain's Meeting Slopestyle - Draw W / M	GOM
Snowboard	17-Jan-23	TUE	12:15	12:45	Official Training Slopestyle W / M	GOM
Snowboard	17-Jan-23	TUE	13:00	15:00	Slopestyle Qualifications W / M	GOM
Snowboard	18-Jan-23	WED	12:15	12:45	Official Training Slopestyle W / M	GOM
Snowboard	18-Jan-23	WED	13:00	15:00	Slopestyle Finals W / M	GOM
Snowboard	18-Jan-23	WED	14:30	14:45	Mascot Ceremony Slopestyle W / M	GOM
Snowboard	18-Jan-23	WED	15:15	15:30	Medal Ceremony Slopestyle W / M	GOM
Snowboard	18-Jan-23	WED	16:00	16:30	Team Captain's Meeting Big Air - Draw W / M	GOM
Snowboard	19-Jan-23	THU	12:15	12:30	Big Air Inspection W / M	GOM
Snowboard	19-Jan-23	THU	12:45	13:15	Official Training Big Air W / M	GOM
Snowboard	19-Jan-23	THU	13:30	15:00	Big Air Qualifications W / M	GOM

Snowboard	20-Jan-23	FRI	12:00	12:45	Official Training Big Air W / M	GOM
Snowboard	20-Jan-23	FRI	13:00	15:00	Big Air Finals W / M	GOM
Snowboard	20-Jan-23	FRI	14:30	14:45	Mascot Ceremony Big Air W / M	GOM
Snowboard	20-Jan-23	FRI	15:15	15:30	Medal Ceremony Big Air W / M	GOM
Snowboard	20-Jan-23	FRI	18:00	19:00	Team Captains Meeting PGS & PSL W / M	VS1
Snowboard	20-Jan-23	FRI			Unofficial Training Parallel Giant Slalom / Slalom W / M	GOM
Snowboard	21-Jan-23	SAT			Reserve Day	GOM
Snowboard	21-Jan-23	SAT	10:00	11:00	Parallel Giant Slalom Qualifications W / M	GOM
Snowboard	21-Jan-23	SAT	13:00	14:30	Parallel Giant Slalom Finals W / M	GOM
Snowboard	21-Jan-23	SAT	14:30	14:45	Mascot Ceremony Parallel Giant Slalom W / M	GOM
Snowboard	21-Jan-23	SAT	15:15	15:30	Medal Ceremony Parallel Giant Slalom W / M	GOM
Snowboard	21-Jan-23	SAT	16:00	16:45	Team Captain's Meeting Parallel Slalom W / M	GOM
Snowboard	22-Jan-23	SUN	10:00	11:00	Parallel Slalom Qualifications W / M	GOM
Snowboard	22-Jan-23	SUN	13:00	14:30	Parallel Slalom Finals W / M	GOM
Snowboard	22-Jan-23	SUN	14:30	14:45	Mascot Ceremony Parallel Slalom W / M	GOM
Snowboard	22-Jan-23	SUN	15:15	15:30	Medal Ceremony Parallel Slalom W / M	GOM
All	22-Jan-23	SUN	17:10		Closing Ceremony	OCN

#### 5.7.1 CEREMONIES

Mascot Ceremonies will be held immediately following the completion of the competition. Medal Ceremonies for men and women will be held on venue at Gore Mountain in the evening of each competition. For more information, please refer to Chapter 5.10.

#### **5.7.2 TRAINING**

Unofficial Training at Gore Mountain will take place on 10 January 2023. At the 1st TCM, information will be provided on which delegations can train where and when. Access to the ski area is ensured for the whole time of stay at the Lake Placid 2023 FISU Games.

#### **5.7.3 RESERVE DAY**

The OC will do its best to hold all competitions on the scheduled days. However, under exceptional weather conditions, the competitions may have to be postponed/rescheduled.

#### **5.7.4 GENERAL TECHNICAL MEETING**

The 1st General Technical Meeting will be held on 10 January 2023 at 17:00. At the General Technical Meeting, the Head of Delegation or his/her representative shall confirm and sign the official entry list of athletes.

Only athletes with an active FIS code are allowed to participate in each Snowboard event. Entries are controlled by the Organizing Committee and the FIS Technical Delegate. Only with an accreditation card approved by the CIC can an athlete be considered for the draw of a starting list and be entitled to participate in any of the competitions. Any further details and clarifications, which are not yet described in the Technical Handbook will be communicated at the respective General Technical Committee Meetings.

Team Captain's meetings will be held according to the detailed day-by-day schedule as shown in Section 5.7.

### **5.8 Equipment**

Clothing and equipment control will, in principle, follow FIS rules. The equipment control will be carried out in respect to the recent technical FIS regulations if no additional FISU rules are determined. Each competitor is responsible for the equipment that he/she uses (skis, bindings, poles, ski boots, suit, etc.). The term competition equipment encompasses all items of equipment which the competitor uses in competition. This includes clothing as well as apparatus with technical functions. All the competition equipment forms a functional unit. All equipment used by athletes is governed by the FIS Specifications for Competition Equipment.

<https://www.fis-ski.com/en/inside-fis/document-library/snowboard-documents>

#### **5.8.1 STORAGE AND WAXING ROOMS**

The Lake Placid 2023 FISU World University Games will provide sport equipment storage and waxing rooms for the teams. All facilities are built and organized according to all international requirements. Waxing rooms and cabins for Snowboard will be provided outside of the Great Escape in the upper parking lot.



The rooms will be allocated to the respective nations and shared among their sports.

#### **5.8.2. WAXING ROOM EQUIPMENT**

For Alpine, Freeski & Freestyle and Snowboard, the LOC will provide Swix waxing benches (expected model is T0075W – waxing bench wide) in each waxing cabin/area.

Each waxing area (for all relevant sports) will have an ample supply of U.S. 110 power, plug-ins and extensions.

The LOC will NOT be providing power converters/transformers, waxing irons, vises, profiles, etc. However, both Swix and Toko will offer online shopping options for each delegation. The offering is summarized as follows:

- In late November 2022, the LOC sent each Delegation an invitation, instructions and custom access code for setting up their own Swix/Toko online shop for ordering discounted waxing and tuning equipment.
- Delegation or Team Managers must register and set up their team Swix/Toko website. Once properly registered, they are granted access to all Swix and Toko waxing and tuning supplies at special Lake Placid 2023 FISU Games pricing.
- The deadline for orders is 31 December 2022. All orders for each delegation and will be shipped to a designated onsite location at the Great Escape in Queensbury, N.Y. Each team order will have the delegation's name and contact person on the package for easy identification.
- The Swix/Toko online shops will close 1 January 2023, giving us the necessary time to receive the products in Queensbury and get them to the team waxing area locations.

### **5.9 Doping Control**

Doping Control will be carried out in accordance with the WADA World Anti-Doping Code and FISU regulations. Conditions for doping control procedures will be provided during the competitions at all sports venues.

#### **5.9.1 LIST OF PROHIBITED SUBSTANCES**

The actual list of prohibited substances and methods is defined in accordance with WADA international standards. National University Sports Federations will be responsible for ensuring that their delegations, namely athletes, are made aware of the actual copy of the prohibited list. Ignorance of the prohibited list contents will in no way constitute a valid excuse for any participant of the Lake Placid 2023 FISU World University Games violating valid FISU Anti-Doping Rules. For the WADA list of prohibited substances and methods please refer to the following website: [www.wada-ama.org](http://www.wada-ama.org).

### 5.9.2 TESTING

The required number of samples will be selected during the “in-competition” and “out-of-competition” periods in accordance with the Test Distribution Plan. “In-competition” is defined as the period commencing 12 hours before a competition in which the athlete is scheduled to participate through to the end of such competition and the sample collection process related to such competition. “Out-of-competition” is defined as any doping control which is not “in-competition”. During the Lake Placid 2023 FISU World University Games, athletes can be tested at any time without prior notice. Urine and/or blood samples will be collected in compliance with the WADA International Standard for Testing and Investigations (ISTI). A paperless system will be used for the sample collection. The testing will be conducted by Doping Control Officers (DCO) from an anti-doping organization accredited by WADA. Testing will be conducted under the supervision of the FISU International Medical Committee. Doping samples will be sent to the WADA-accredited anti-doping laboratory (LAD) in Montreal, Canada. All results will be sent to the Chairman of the FISU International Medical Committee and entered into the ADAMS system. In the event of a violation of FISU Anti-Doping Rules, the responsibility for processing the results lies with the FISU International Medical Committee.

In the event of setting a national record, doping testing of the athlete is carried out at the expense of his/her National University Sports Federation.

### 5.9.3 DOPING CONTROL STATIONS

Doping control stations are located at each sports venue or in close proximity. The main doping control station is located in the Host City of Lake Placid. All doping control stations will be marked with signs, including signage directing athletes to the stations. After the completion of the doping control procedure, all samples collected at each doping control station will be delivered to the central doping control station together with the necessary support documentation (doping control protocols) for further registration in the ADAMS system. All samples will be packaged and sent to the WADA accredited anti-doping laboratory in accordance with international standards. All the information concerning the doping control program during the Lake Placid 2023 FISU World University Games is confidential according to WADA and FISU requirements. When visiting a doping control station, athletes are required to have accreditation cards.

The doping control station for Snowboard athletes will be located at the Gore Mountain Base Lodge's lower level.

- o Doping control stations for out of competition controls and outside venue operating hours will be located at medical stations in various locations, being Knowles Hall, Great Escape, Paul Smith's College (the Health Center) and Lake Placid Sports Medicine. If testing outside of competition, athletes may be required to test at the medical station nearest them.

### 5.9.4 THERAPEUTIC USE EXEMPTIONS (TUE)

Lake Placid 2023 FISU World University Games participants who require Therapeutic Use Exemption (TUE) must make an appropriate request to the National Anti-Doping Organization or International Federation before participation in the Lake Placid 2023 FISU Games. The World

Anti-Doping Agency International Standard for TUE will be applied in this case. Every athlete who uses a substance or a method included in the list of prohibited substances is obliged to be in possession of a completed TUE form of the established standard from the moment of arrival until the departure from the Village after the Closing Ceremony of the Lake Placid 2023 FISU World University Games.

If there is a need for the use of a prohibited substance or a prohibited method for medical reasons after the Opening Ceremony of the Lake Placid 2023 FISU World University Games, an athlete must submit a request for TUE to the FISU International Medical Committee as a matter of urgency. The responsibility for completing the TUE form and submitting an application to the FISU International Medical Committee lies with the delegation physician.

If the delegation does not have its own physician, the athlete shall submit a request for TUE with the attachment of medical documentation confirming the fact of providing him/her with emergency medical treatment to the FISU International Medical Committee.

#### 5.9.5 STRUCTURE

Chair of FISU International Medical Committee	<b>Dr. Dusan Hamar</b>
OC Head of Medical Services & Doping Control	<b>Dr. Tracey Viola</b>

### 5.10 Mascots and Medals

#### 5.10.1 MASCOT CEREMONY

Mascot Ceremonies will take place following the completion of each competition in the immediate vicinity of the Field of Play.

#### 5.10.2 MEDAL CEREMONY

The Medal Ceremonies will be held at Gore Mountain according to the detailed day-by-day schedule as shown in section 5.7.

The official language for the Medal Ceremony will be English.

The medalists of each event must attend the Medal Ceremony. In the event that a medalist is unable to attend, the medal is delivered to an official of the relevant delegation. He/she must be dressed in the delegation's official outfit. He/she must not mount the podium but stand behind it. The awarders will hand the medal and mascot over the podium. During the FISU Anthem, the delegation official stands behind the podium. In the event that all medalists cannot be present, the Medal Ceremony will be postponed. If an athlete or team is disqualified, the medal(s) shall be returned to FISU.

### During the Medal Ceremony:

- The athletes are not allowed to bring any national flag or any other national, cultural or religious symbol on the podium.
- The national flags of the first three (3) medalists will be raised and the only anthem played will be the FISU Anthem, the Gaudeamus Igitur.
- During the playing of the FISU Anthem and the raising of the flags, athletes shall face the flags and always conduct themselves in a dignified manner. No national anthem is played during the ceremony.
- Athletes are expected to take off their caps and sunglasses when receiving their medal and keep items in hand throughout the ceremony (i.e., playing of the FISU Anthem and raising of the flags).
- Athletes, authorities and accompanying persons are required to face the flags while they are being raised and the FISU Anthem is being played.
- The medalists are expected to attend the ceremony in the uniforms they wore at the Opening Ceremony but are also allowed to attend the official ceremony wearing sport uniforms when the ceremony takes place immediately following the competition.
- After the medals are awarded, athletes must remain in the awarding area for photos on the podium with medals.
- In order to get the best photos, athletes should follow the recommendations of photographers.

#### 5.10.3 DIPLOMA OF HONOR

- The athletes ranked one (1) to eight (8) will receive a Diploma of Honor.
- For team events, each team member, from teams ranked one (1) to six (6), will receive a personal Diploma of Honor mentioning his/her name and the team ranking.
- Diplomas of Honor are not distributed at the Medal Ceremony. They are handed to the Head of Delegation or an appointed representative of each delegation prior to departure.
- If an athlete or team is disqualified, the diploma(s) shall be returned to FISU.

### 5.11 Media Interviews

Venue Media Centers for media representatives are organized at all Lake Placid 2023 FISU World University Games competition sites.

At the end of a competition, all athletes must leave the Field of Play through the mixed zone where brief interviews will be held. Every athlete/coach should be ready to communicate with media representatives upon their request. Team representatives should be prepared to provide athletes with a warm jacket or a blanket prior to entering the mixed zone.

A volunteer from the Venue Media Center will coordinate the exchanges between athletes/coaches and media.



Support for translation in English will be provided during the mixed zone interviews. If an athlete/coach does not speak this language, they should invite their team interpreter to the mixed zone.

Media conferences are held at the beginning and the end of the Lake Placid 2023 FISU World University Games.

## 5.12 Sport Information Services

### 5.12.1 ONLINE SPORT INFORMATION SERVICES

Online information will be available on the Lake Placid 2023 FISU World University Games' official website: <https://www.lakeplacid2023.com/>

In addition, more detailed information and publications for teams can be accessed under the following link: <https://www.lakeplacid2023.com/delegation-services/publications/>

### 5.12.2 SPORT INFORMATION CENTER (SIC)

The Sport Information Center is located in the Great Escape lobby area.

The following services will be provided during the Lake Placid 2023 FISU World University Games:

- Competition schedule
- Training schedule
- Technical meeting information
- Distribution of daily sport results

The Sport Information Center will operate 07:00-21:00, from 11-22 January 2023.

### 5.12.3 SPORT INFORMATION AT THE VENUE

A Sport Information Desk (SID) will be located at each venue, providing the most recent information related to the competitions and receiving requests from the team representative(s).

- The Sport Information Desk will operate from 11 January 2023 until the final day of competition in accordance with the competitions and training schedules (one (1) hour before and after the events).

#### 5.12.4 SPORT INFORMATION DISTRIBUTION

Information	Online	Venue	SIC	ITO Hotel
Competition Schedule	+	+	+	+
Start List/ Result List	+	+	+	+
Change to Schedule	+	+	+	+
Special Announcements	+	+	+	+
Weather Information	+	+	+	+
Medal Table	+			
Technical Handbook	+			
FISU Regulations	+			
Other Information		+	+	+
Answer to Team Questions		+	+	+

## 6. SERVICE INFORMATION

### 6.1 Accreditation

#### Welcome Center (Main Accreditation Center)

Olympic Conference Center (OCN) (Third (3rd) Floor)  
2634 Main Street Lake Placid, NY 12946

#### Village South (Remote Accreditation Center)

Great Escape (Main Lobby)  
89 Six Flags Drive, Queensbury, NY 12804

**\*Note:** Limited distribution and printing at this location.

Operating Dates: 7-23 January

Operating times (subject to change):

- 7-14 January, 09:00 – 21:00
- 15-23 January, 09:00 – 15:00

**IMPORTANT:** A personalized accreditation card with a photo, name and function of the cardholder carries information about the access rights and privileges available to him/her. Upon arrival, the accreditation card, equipped with a QR-code, enables members of delegations a 24-hour temporary access to the Lake Placid 2023 FISU World University Games venues in accordance with the access rights on the accreditation card. The temporary access does not allow participation in the competition. After CIC's approval, the accreditation card will be fully activated.

Accredited athletes, coaches and officials for Freestyle & Freeski and Snowboard will receive a ski pass for the venues/area of their respective sport and for the duration of their Lake Placid 2023 FISU World University Games accredited period together with the accreditation card.

## 6.2 Radio Frequency Control

At all Lake Placid 2023 FISU World University Games venues, any use of frequencies (e.g., on walkie-talkies, radio stations, wireless cameras, Wi-Fi access points, wireless microphones, FM-transmitters and any other wireless equipment), will require a temporary radio license from the Organizing Committee (OC). All Delegations have been contacted separately regarding radio frequency license requests. If anyone has not received or responded to this communication, please contact [delegations@lakeplacid2023.com](mailto:delegations@lakeplacid2023.com) immediately.

Every wireless device must be registered by the frequency-organizer before it may be used.

- License-free\*: wireless microphones and in-ear monitoring systems, frequency range: 470-694 MHz
- License obligation: walkie-talkies (two (2)-way radio) and telemetry.

\* Only a limited number of shared frequencies are available. Registration is mandatory and such equipment will not have a dedicated channel.

## 6.3 Insurance and Responsibilities

Participating countries must adhere to the insurance requirements and conditions as stipulated in Section 5.6 of the FISU Winter Games General Regulations for the Lake Placid 2023 FISU World University Games.

Skiing and snowboarding off path:

Any participants skiing or snowboarding off the controlled slopes do so at their own risk. The Lake Placid 2023 FISU World University Games does not accept any liability.

## 6.4 Transportation

### 6.4.1 TRANSPORTATION SYSTEM FOR ATHLETES AND TEAM OFFICIALS (TA)

The transportation system for athletes and team officials will provide transport services from 8-22 January 2023. Routes in the transportation system for athletes and official delegation members are marked with the abbreviation “TA” (Transport Athletes). Vehicles are being equipped with placards indicating route number for the individual and team sports and spectating athletes.

Route Number	TA VS-GOM
Sport	Snowboard
Route	Great Escape to Gore Mountain
Distance to the Venue	32 miles (52 km)
Time	41 min

### Transportation Service for Spectating Athletes and Officials

Scheduled buses are provided between the Great Escape and Lake Placid with connection service to the competition venues for spectating athletes from 13-22 January 2023. Buses will operate in accordance with the competition schedule. All athletes and officials, regardless of their delegation and sport, will have access to the bus transportation systems TS.

Detailed information will be available in the [Transportation Guide](#) for delegations.

## 6.5 Food and Beverages

Athlete dining will be in the Great Escape’s Johnny Rockets restaurant from 7-24 January 2023. The first meal will be provided on 7 January for lunch at 12:00. The last meal will be provided on 24 January until 10:30.

### 6.5.1 MEALTIMES

- Breakfast: 05:30 to 10:30
- Lunch: 11:00 to 16:00
- Dinner: 17:00 to 22:30
- Snack: 21:30 to 22:30

#### 6.5.2 FNB SERVICES AT THE COMPETITION VENUES

- An athletes' lounge will be providing snacks one (1) hour prior to the competition until one (1) hour after the competition. This service is provided from the start of the first official training.
- On venue meals for athletes and delegation officials will also be provided during competition days.
- Meals to be offered according to the schedule below.
  - 12 January: Lunch for Men and Women's Snowboard Cross
  - 13 January: Lunch for Men and Women's Snowboard Cross
  - 15 January: Lunch for Official Training of Men and Women's Slope Style
  - 16 January: Lunch for Official Training of Men and Women's Slope Style
  - 17 January: Lunch for Men and Women's Slope Style
  - 18 January: Lunch for Men and Women's Slope Style
  - 19 January: Lunch for Men and Women's Big Air
  - 20 January: Lunch for Men and Women's Big Air
  - 21 January: Lunch for Men and Women's Parallel Giant Slalom
  - 22 January: Lunch for Men and Women's Parallel Slalom

### 6.6 Medical Services

#### 6.6.1 CONDITIONS OF MEDICAL ASSISTANCE

- During the Lake Placid 2023 FISU World University Games, emergency medical assistance, in the event of life-threatening diseases and conditions or in any situations requiring urgent medical treatment, is provided to all client groups.
- Immediate (except for emergency) and planned medical care is provided based on:
  - an obligatory medical insurance agreement;
  - a paid medical service agreement;
  - a voluntary health insurance agreement.

#### 6.6.2 MEDICAL SUPPORT STRUCTURE

- Medical stations for athletes and spectators at the competition venues
- Mobile medical crews in the Field of Play of the competition venues
- Ambulance crews at the competition venues
- Dedicated hospitals and specialized medical facilities

\*Please refer to the [Medical Services Guide](#) for more details.

#### 6.6.3 MEDICAL SUPPORT IN THE ACCOMMODATION SITES

Medical services will be offered on site at Great Escape. Details can be found in the Medical Services Guide.



#### 6.6.4 DEDICATED HOSPITALS AND SPECIALIZED MEDICAL FACILITIES

- The Adirondack Medical Center is located at 203 Old Military Road, Lake Placid, NY 12946.
  - Phone number: 518-523-3311
- Saratoga Hospital, 211 Church St, Saratoga Springs, NY 12866
  - Phone number: 518- 587- 3222

### 6.7 Weather and Climate

Lake Placid averages 102 inches (259 cm) of snow per year while the U.S. average is 28 inches (71.12 cm) of snow per year, with daily temperatures averaging 25°F to 1°F ( -3°C to -17°C).

Weather information can be picked up at Sport Information Centers at each of the Villages as well as other locations, including on the Lake Placid 2023 FISU Games website.

## 7. OC CONTACTS

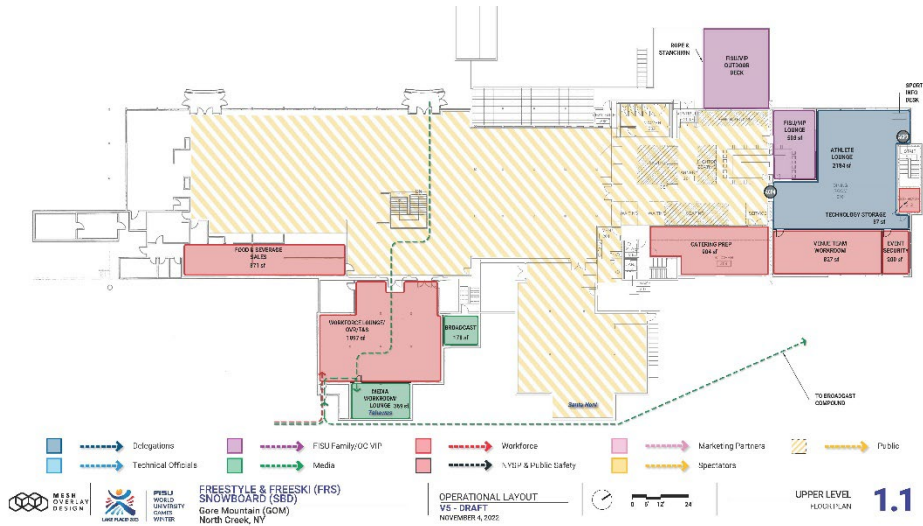
Title	Email
Accreditation	accreditation@lakeplacid2023.com
Sport Entries	sportentries@lakeplacid2023.com
Delegation Services	delegations@lakeplacid2023.com
ITO Service Desk	itoservices@lakeplacid2023.com



## 8.2 Venue Layouts

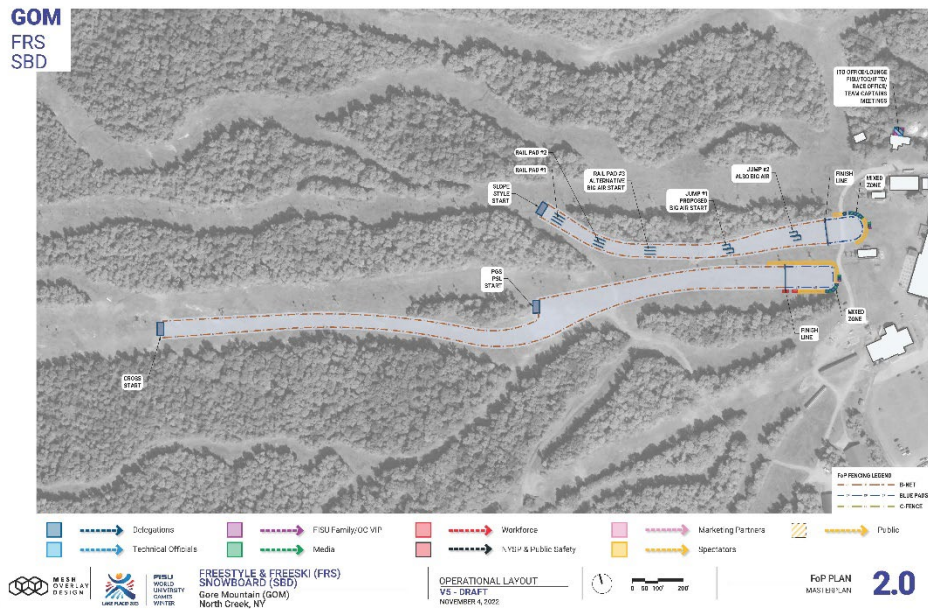
### 8.2.1 VENUE PLANS

GOM  
FRS  
SBD



### 8.2.2 OVERVIEW SLOPES

GOM  
FRS  
SBD

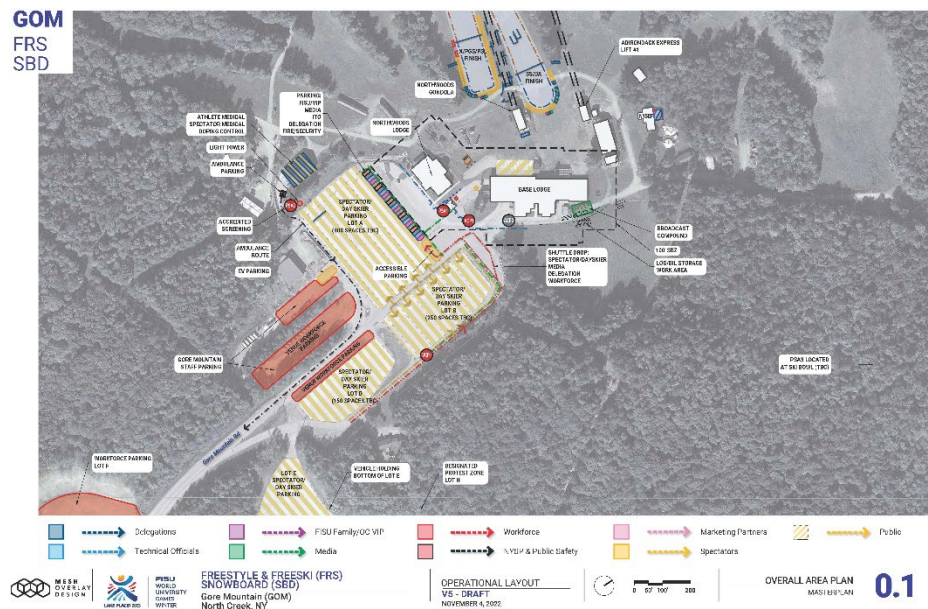






GORE SNOWBOARD PGS & PSL	MIN	MAX
Start Elevation	537m	563m
Finish Elevation	465m	465m
Vertical Drop	72m	98m
Course Length	350m	450m

### 8.3 Geographical Overview Venues







**FISU**  
WORLD  
UNIVERSITY  
GAMES  
WINTER