



KRASNOYARSK 2019
29TH WINTER UNIVERSIADE



TECHNICAL HANDBOOK ALPINE SKIING



FEBRUARY 2019

WU 2019 TECHNICAL HANDBOOK TABLE OF CONTENT

WU 2019 TECHNICAL HANDBOOK TABLE OF CONTENT	2
1. WELCOME MESSAGES.....	3
2. ABBREVIATIONS.....	5
3. FISU INTERNATIONAL TECHNICAL COMMITTEE FOR THE WINTER UNIVERSIADE (CTI – UH).....	6
4. GENERAL INFORMATION	7
4.1. 29TH WINTER UNIVERSIADE KRASNOYARSK 2019.....	7
4.2. 29TH WINTER UNIVERSIADE KRASNOYARSK 2019 COMPETITION SCHEDULE.....	7
4.3. OPENING AND CLOSING CEREMONIES	7
5. COMPETITION INFORMATION.....	8
5.1. TECHNICAL COMMITTEE.....	8
5.2. INTERNATIONAL TECHNICAL OFFICIALS	8
5.3. ALPINE SKIING STRUCTURAL CHART	9
5.4. TECHNICAL REGULATIONS.....	10
5.5. COMPETITION FORMAT	11
5.6. COMPETITION AND TRAINING VENUE INFORMATION	14
5.7. DAY BY DAY SCHEDULE	15
5.8. EQUIPMENT	21
5.9. DOPING CONTROL.....	21
5.10. AWARDS AND MEDALS	23
5.11. DIPLOMA OF HONOURS	23
5.12. PRESS INTERVIEWS.....	24
5.13. SPORT INFORMATION SERVICES	24
6. SERVICE INFORMATION	26
6.1. RADIO FREQUENCY CONTROL	26
6.2. ACCREDITATION	26
6.3. SKI PASS.....	26
6.4. STORAGE AND WAX ROOMS	26
6.5. TRANSPORTATION	27
6.6. FOOD AND BEVERAGES.....	29
6.7. MEDICAL SERVICES	29
7. OC CONTACTS.....	30
8. APPENDICES.....	31
8.1. 29TH WINTER UNIVERSIADE 2019 KRASNOYARSK COMPETITION SCHEDULE.....	31
8.2. VENUE LAYOUTS.....	32
8.3. PROFILE OF THE SLOPES.....	35
8.4. UNIVERSIADE VILLAGE MAP.....	43
8.5. KRASNOYARSK CITY MAP	44
8.6. TRAINING SESSIONS APPLICATION FORM	45

1. WELCOME MESSAGES



Dear Friends,

On behalf of FISU I am delighted to welcome you to the 29th Winter Universiade which will be held on 2-12 March 2019 in Krasnoyarsk, Russia!

This technical handbook has been created to provide you with comprehensive information on your participation in the Winter Universiade. The handbook reflects an immense amount of work that FISU's Technical Committee Chairs together with the competition managers of the Organising Committee and the International Sports Federations have done to allow world's most successful student athletes to compete in the best possible environment.

The Winter Universiade is set to become a landmark event for the whole Siberia. The investments in infrastructure and sport facilities have been incredible. The organisers have been working really hard to train staff and volunteers. Our most profound appreciation goes to all those who worked day and night to offer high standards of services to all participants.

Now, the time has finally come to celebrate winter university sports in Siberia! We look forward to welcome you in Krasnoyarsk and we are sure that you will find in this manual all the necessary information that will help you to participate in the competitions in a smooth and proper manner.

Together with the entire FISU Family, I wish you all the best for a very successful Winter Universiade in Krasnoyarsk!

A handwritten signature in black ink, appearing to read 'Matytsin'.

Oleg Matytsin
FISU President



Dear Friends,

One of the most awaited and large-scale events, the Winter Universiade 2019, is going to be held in Krasnoyarsk from March 2 to 12.

The forthcoming Games will make a lasting impression on the participants' lives. More than 3,000 athletes from all over the globe will compete for 76 sets of medals in 11 sports. Thousands of people of different professions, nationalities, confessions, and cultures will be united for several days by the same world. It is the world of sport, health, unlimited opportunities, and success. Not only the victories of the best athletes and the tears of those who did not succeed will be the Universiade result, it will also leave colourful feelings of the welcoming country, beautiful city, warm-hearted Siberians. Touching memories, strong friendship and faith in creative power of sport will stay in hearts of people for years.

Over the last 5 years, working together with the International University Sports Federation, we have made complicated but interesting project a reality. It is to prepare a colourful and memorable sports event. Thousands of people including athletes, spectators, and viewers all over the world live in the breathtaking waiting, anticipating this great feast of friendship, strength and creation.

The attached technical handbook is about one of the 11 sports included into the programme of the Winter Universiade 2019. In the technical handbook one can find all the required information regarding disciplines and rules, the sports programme and main services for athletes and official delegation members. Likewise, you can familiarize yourself with the competition venue.

On behalf of the Organising Committee, I thank you for your interest in the forthcoming Games! We are looking forward to meeting you during the 29th Winter Universiade Krasnoyarsk 2019!

**Maxim Urazov,
Director General
ANO "Directorate Krasnoyarsk 2019"**

A handwritten signature in dark ink, consisting of stylized, overlapping loops and strokes, representing the name Maxim Urazov.

2. ABBREVIATIONS

Abbreviation	Name in full
AC	Alpine combined
ADAMS	Anti-Doping Administration and Management System
ALP	Alpine Skiing
CIC	FISU International Control Committee
CMI	FISU International Medical Committee
CT	FISU Technical Committee
CTI-UH	FISU International Technical Committee for Winter Universiade
EC	FISU Executive Committee
FIS	International Ski Federation
FISU	International University Sports Federation
GS	Giant Slalom
GTM	General Technical Meeting
HOD	Head of Delegation
ICR	FIS International Competition Rules
ISF	International Sports Federation
ITO	International Technical Official
NADO	National Anti-Doping Organisation
NOC	National Olympic Committee
NSF	National Sports Federation
NTO	National Technical Official
NUSF	National University Sports Federation
OC	Organising Committee
PNTE	Parallel National Team Event
RADO	Regional Anti-Doping Organisation
RASSF	Russian Alpine Ski And Snowboard Federation
SG	Super-G
SIC	Sport information Centre
SID	Sport Information Desk
SL	Slalom
TCM	Team Captains Meeting
TD	Technical Delegate
TCC	Technical Committee Chair
TO	Technical Official
TUE	Therapeutic Use Exemptions
UV	Universiade Village
WADA	World Anti-Doping Agency
WU	Winter Universiade

3. FISU INTERNATIONAL TECHNICAL COMMITTEE FOR THE WINTER UNIVERSIADE (CTI – UH)

Position	First Name	Last Name	Country
FISU CTI-UH Chair	Roger	ROTH	SUI
FISU CTI-UH Vice Chair	Robert	PHILIP	CAN
FISU TCC Alpine Skiing	Matjaz	KRANJC	SLO
FISU TCC Biathlon	Karl-Heinz	WOLF	GER
FISU TCC Cross-Country Skiing	Zofia Stefania	KIELPINSKA	POL
FISU TCC Curling	Jeanette	JOHNSTON	GBR
FISU TCC Figure Skating	Marie	LUNDMARK	FIN
FISU TCC Freestyle Skiing	Magnus	FERRY	SWE
FISU TCC Snowboard	Ola	SUNDEKVIST	SWE
FISU TCC Ice Hockey	Reto	BERTOLOTTI	SUI
FISU TCC Ice Hockey	Jarmo	JALARVO	FIN
FISU TCC Short Track	Nam Hwan	PARK	KOR
FISU TCC Ski Orienteering	Valentin	GARKOV	BUL
FISU TCC Bandy	Tor Audun	SOERENSEN	NOR

4. GENERAL INFORMATION

4.1. 29TH WINTER UNIVERSIADE KRASNOYARSK 2019

Date:	2 – 12 March 2019
Location:	Krasnoyarsk, Russia
Sports Programme:	11 Sports (8 Compulsory, 3 Optional) with 76 events
Venues:	10 Competition venues, 1 Training venue

4.2. 29TH WINTER UNIVERSIADE KRASNOYARSK 2019 COMPETITION SCHEDULE

Please refer to Appendix 8.1.

4.3. OPENING AND CLOSING CEREMONIES

4.3.1. OPENING CEREMONY

Date:	2 March 2019
Location:	Platinum Arena Ice Arena
The beginning of the Ceremony:	20:19
Duration:	3 hours
March pass of the athletes:	20:30 – 21:20

4.3.2. CLOSING CEREMONY

Date:	12 March 2019
Location:	Platinum Arena Ice Arena
The beginning of the Ceremony:	20:00
Duration:	2hours 30 minutes

5. COMPETITION INFORMATION

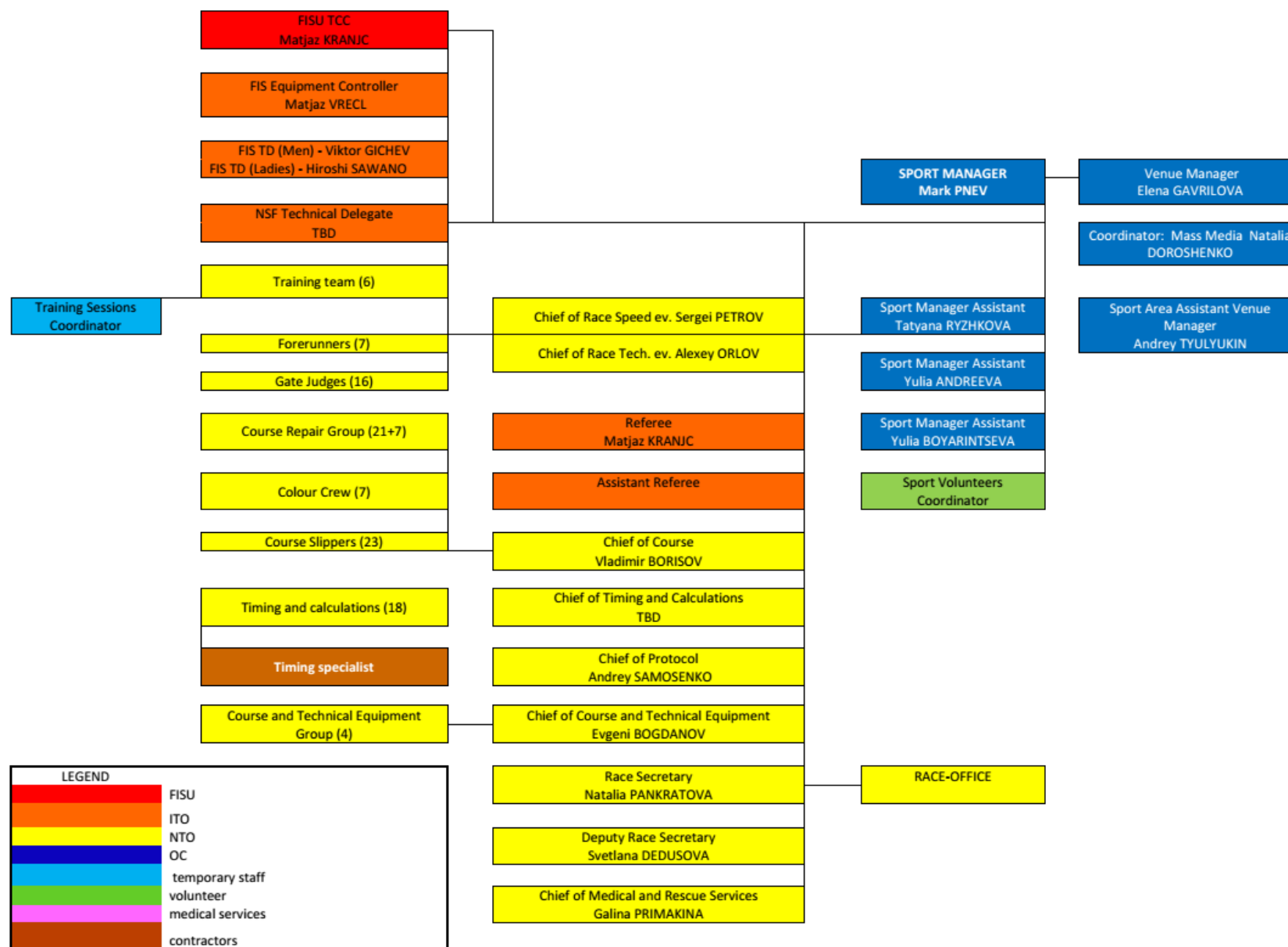
5.1. TECHNICAL COMMITTEE

Technical Committee Chair	Matjaz KRANJC (SLO)
FIS Technical Delegate Men	Victor GICHEV (BUL)
FIS Technical Delegate Women	Hiroshi SAWANO (JPN)
NSF Technical Delegate	TBD
Competition Manager	Mark PNEV (RUS)
Chief of the Race Speed discipline	Sergey PETROV (RUS)
Chief of the Race Technical discipline	Aleksey ORLOV (RUS)

5.2. INTERNATIONAL TECHNICAL OFFICIALS

FIS Equipment Controller	Matjaz VRECL (SLO)
--------------------------	--------------------

5.3. ALPINE SKIING STRUCTURAL CHART



5.4. TECHNICAL REGULATIONS

The Alpine Skiing events will be organised in accordance with the most recent technical regulations of the International Ski Federation (FIS), except when specifically amended with the WU2019 Regulations or by the CTI-UH. In any dispute the English text will be regarded as authoritative.

The programme includes the following events:

Men	Women
Alpine Combined (AC)	Alpine Combined (AC)
Super – G (SG)	Super – G (SG)
Giant Slalom (GS)	Giant Slalom (GS)
Slalom (SL)	Slalom (SL)
Parallel Nations Team Event (PNTE)	

Each country may enter:

A total of twenty-four (24) competitors may enter for the alpine skiing events but not to exceed twelve (12) competitors of the same gender. Only six (6) men or six (6) women may take part in the same event.

Parallel Nations Team Event: each country may enter only one (1) team consisting of two (2) women and two (2) men.

At the first General Technical Meeting, the Head of Delegation or his/her representative shall confirm and sign the official entry list of competitors.

Only competitors with an active FIS code are allowed to participate in each alpine skiing event.

Entries are controlled by the Organiser and the FIS Technical Delegate. Only accredited athletes can be considered for the draw of a starting list.

All accredited alpine skiing athletes are allowed to participate in the official trainings.

5.4.1. JURY COMPOSITION

Members of Jury (Rules for FIS-UNI Competitions – Edition 2014):

In accordance to ICR Rules (601.4) for all events (men and ladies) the Jury must be nominated with the following members:

- TD FIS (one for men and one for ladies nominated by FIS)
- TD FISU (nominated by FISU) takes the function of Referee
- Assistant Referee (only for speed events) proposed by FISU and nominated by the TD FIS
- Chief of Race (nominated by Organising Committee)
- The second nominated TD FIS could be proposed to act as Start Referee or Finish Referee.

All Jury members must be able to communicate with the local Organising Committee and with all Jury members by radio during the competitions (ICR 601.4.1.5) in one of the official FIS languages.

Connecting Coach

The Jury has the right to nominate a Connection Coach at the Teams Captains meeting who will work together with the jury and the other coaches, but will not be Jury member.

5.4.2. PROTEST AND APPEAL

Any protest of a sport or disciplinary nature must reach the Jury according to the regulations laid down by the FIS. Such protest must be accompanied by a deposit of CHF 100.- or equivalent in another valid currency (FIS ICR Art. 644; 644.4). This deposit will be returned if the protest is upheld.

Each Head of Delegation or his/her deputy is authorized to lodge an appeal against the decision of the Jury. This appeal must be submitted in writing to the Jury of Appeal or competent authority in accordance with the FIS regulations.

Any decision of the Jury of Appeal or equivalent authority of a sport is final and must be reported immediately to the Head of Delegation of the country concerned.

Any sport disciplinary situation, which cannot be satisfactorily resolved by the sports technical committees and the sport-specific disciplinary regulations, will be reported to the FISU Disciplinary Committee for further action to be taken. Where appropriate, a report will also be sent to FIS.

5.5. COMPETITION FORMAT

5.5.1. INDIVIDUAL RACES DRAW

- Draw accordingly to the FIS ICR art. 621.3. The starting order of the competitors in all alpine competitions is determined by their FIS points in the concerned discipline. A first group of a maximum of the 15 best competitors present regardless of nationality will be drawn.
- The group may be increased if two or more competitors share the 15th rank.
- All remaining competitors start in order of their FIS points. All competitors without FIS points will be drawn in the last group.

5.5.2. ALPINE COMBINED (AC)

- FIS Race Level 1 (min. FIS points penalty: 6)
- The Alpine Combined event consists of two runs.
- FIS points attributed for Alpine Combined and Super-G race of the Alpine Combined if racer finishes also SL run (level 1. Rule).

5.5.3. SUPER – G (SG)

- FIS Race Level 1 (min. FIS points penalty: 6)
- The Super-G is carried out in one run.

5.5.4. GIANT SLALOM (GS)

- FIS Race Level 1 (min. FIS points penalty: 6)
- The GS event consists of two runs.

5.5.5. SLALOM (SL)

- FIS Race Level 1 (min. FIS points penalty: 6)
- The Slalom event consists of two runs.

5.5.6. PARALLEL NATIONS TEAM EVENT (PNTE)

1. Type of Event

- The race will be conducted as a parallel event using GS gates and panels.
- The vertical drop of the course should be between 80 and 100 m.

2. Team Ranking/Team Selection

- The team entries confirmations for the PNTE (with names of participating athletes) must be submitted at the Team Captains meeting on March 6th (two days before TCM for PNTE).
- The teams will be ranked in accordance with the sum of each entered competitor FIS points (SL or GS) from lowest total points to highest.
- A maximum of 16 may participate in the Parallel Nation Team Event. Should the number of teams entered be greater, the first 16 ranked nations will be selected for the event.
- The total team size per Nation is limited to a maximum of 4 competitors; 2 ladies and 2 men.
- A competitor can only start a run once.

3. Seeding of the Teams

- The entered teams will be seeded into 8 heats based upon their ranking
- Bracket list will be arranged as follows:
 - Heat 1: Nation ranked 1 vs Nation ranked 16 (last)
 - Heat 2: Nation ranked 8 vs Nation ranked 9
 - Heat 3: Nation ranked 5 vs Nation ranked 12
 - Heat 4: Nation ranked 4 vs Nation ranked 13
 - Heat 5: Nation ranked 3 vs Nation ranked 14 (3rd last)
 - Heat 6: Nation ranked 6 vs Nation ranked 11
 - Heat 7: Nation ranked 7 vs Nation ranked 10
 - Heat 8: Nation ranked 2 vs Nation ranked 15 (2nd last)
- The best nation, according to the team ranking, will receive bib number 1 and the last nation will receive the last bib number (16). Ladies will race in bibs with odd numbers (1 and 3), men in bibs with even numbers (2 and 4).
- For each individual leg of the heat the competitor, who is listed first or respectively on top of the pairing, will start on the red course for his first run. Following the order in the bracket, from top to bottom, all groups race in succession. For the second individual leg of the heat, the competitors change courses. All subsequent runs are conducted using this system.

4. Running the Competition

- Each individual leg between two opponents consists of one run.
- The start order will be as follow:
 - «Course Red» Nation1 L1 against «Course Blue» Nation16 L1
 - «Course Blue» Nation1 M2 against «Course Red» Nation16 M2

«Course Blue» Nation1 L3 against «Course Red» Nation16 L3
«Course Red» Nation1 M4 against «Course Blue» Nation16 M4

- The blue course will be located on the skier's right
- The starting order cannot be changed from one heat to the next heat.

Round of sixteen:

- The sixteen teams start according to the start system in pairs from top to bottom.
- There are eight that qualify for the quarter-finals.
- The losing eight teams receive the same rank (9th).

Quarter-finals:

- The eight qualified teams start according to the start table.
- The losing four teams receive the same rank. (5th).

Semi-finals and Final:

- The four qualified teams start according to the start table.
- The losers of the semi-finals race for the 3rd and 4th positions and the winners for the 1st and 2nd positions.

5. Points Scoring

- The winner of each individual leg scores 1 point for his/her nation.
- In case of a tie of an individual leg, both nations are awarded 1 point.
- If there is a tie at the end of the heat (example 2:2) the nation with the lowest combined time of the best individual lady and the best individual man (or second best combined time in case of a tie for the best time) will win the heat. If teams cannot be separated by combined times, the team with the fastest single time is the winner.
- If there is still a tie, the nation with the lowest start bib, will be the winner.
- If both competitors fail to finish (DNF), the competitor who successfully skied the furthest distance will be the leg winner.
- No stepping back is possible
- The Jury makes the decisions in all questions not clarified by the rules.

6. Reasons for disqualifications (immediate and without protest)

- Changing from one course to another
- Interfering with the opponent, voluntary or not
- Not passing through a gate correctly (ICR art. 661.4.2)

5.6. COMPETITION AND TRAINING VENUE INFORMATION

5.6.1. GENERAL INFORMATION

OC Venue Manager	Elena GAVRILOVA
------------------	-----------------

Venue	Function	Location	Distance to UV
Funpark Bobrov log	Training / Competition	Krasnoyarsk, Sibirskaya str., 92 55.961594, 92.795137	10,3 km / 21 min

5.6.2. VENUE LAYOUTS

Please refer to the Appendix 8.2.

5.6.3. SLOPES TECHNICAL DATA

Event	Length	Start	Finish	Vertical Drop
SG	1585	517	167	350
GS	1051	488	184	304
SL	581	400	214	186
AC Super - G	1585	517	167	350
AC Slalom	581	400	214	186
PNTE	422	270	170	100

5.6.4. PROFILES OF THE SLOPES

Please refer to the Appendix 8.3.

5.7. DAY BY DAY SCHEDULE

Training / Course Inspection
Competition
Reserve Day
Technical Meeting / Draw
Flower Ceremony
Medal Awarding Ceremony

Date	Day	Start Time	Finish Time	Event Name	Venue
1 March	FRI	16:00	17:00	1st Team Captains Meeting (GTM)	Funpark Bobrovy Log
2 March	SAT	10:00	12:00	Official free skiing on Super-G course	Funpark Bobrovy Log
		13:00	14:00	Team Captains Meeting - Draw SG W/M	Funpark Bobrovy Log
3 March	SUN	9:00	10:00	Course Inspection Super-G W	Funpark Bobrovy Log
		10:30	11:30	Super-G W	Funpark Bobrovy Log
		end of comp.		Flower Ceremony Super-G W	Funpark Bobrovy Log
		11:45	12:00	Medal Awarding Ceremony SG W	Funpark Bobrovy Log
		11:45	12:30	Course Inspection Super-G M	Funpark Bobrovy Log
		13:00	14:30	Super-G M	Funpark Bobrovy Log
		end of comp.		Flower Ceremony Super-G M	Funpark Bobrovy Log
		14:45	15:00	Medal Awarding Ceremony SG M	Funpark Bobrovy Log
		15:30	16:30	Team Captains Meeting - Draw AC W	Funpark Bobrovy Log
4 March	MON	8:45	9:30	Course Inspection W - AC-SG	Funpark Bobrovy Log
		10:00	11:00	Alpine Combined W - SG	Funpark Bobrovy Log
		12:15	13:00	Course Inspection W - AC-SL	Funpark Bobrovy Log
		13:30	14:30	Alpine Combined W - SL	Funpark Bobrovy Log
		end of comp.		Flower Ceremony W - AC	Funpark Bobrovy Log
		14:45	15:00	Medal Awarding Ceremony AC W	Funpark Bobrovy Log
		15:30	16:30	Team Captains Meeting - Draw AC M	Funpark Bobrovy Log

5 March	TUE	8:45	9:30	Course Inspection M - AC-SG	Funpark Bobrov Log
		10:00	11:15	Alpine Combined M - SG	Funpark Bobrov Log
		12:15	13:00	Course Inspection M - AC-SL	Funpark Bobrov Log
		13:30	15:00	Alpine Combined M - SL	Funpark Bobrov Log
		end of comp.		Flower Ceremony M - AC	Funpark Bobrov Log
		15:15	15:30	Medal Awarding Ceremony AC M	Funpark Bobrov Log
6 March	WED			Reserve Day	Funpark Bobrov Log
		17:00	18:00	Team Captains Meeting - GS W	Funpark Bobrov Log
7 March	THU	8:45	9:30	Course Inspection GS W - 1st run	Funpark Bobrov Log
		10:00	11:20	Giant Slalom W - 1st run	Funpark Bobrov Log
		12:00	12:30	Course Inspection GS W - 2nd run	Funpark Bobrov Log
		13:00	14:00	Giant Slalom W - 2nd run	Funpark Bobrov Log
		end of comp.		Flower Ceremony W - GS	Funpark Bobrov Log
		14:15	14:30	Medal Awarding Ceremony GS W	Funpark Bobrov Log
		15:00	16:00	Team Captains Meeting - GS M	Funpark Bobrov Log
8 March	FRI	8:45	9:30	Course Inspection GS M - 1st run	Funpark Bobrov Log
		10:00	11:30	Giant Slalom M - 1st run	Funpark Bobrov Log
		12:15	12:45	Course Inspection GS M - 2nd run	Funpark Bobrov Log
		13:00	14:30	Giant Slalom M - 2nd run	Funpark Bobrov Log
		end of comp.		Flower Ceremony M - GS	Funpark Bobrov Log
		14:45	15:00	Medal Awarding Ceremony GS M	Funpark Bobrov Log
		15:30	16:30	Team Captains Meeting - PNTE	Funpark Bobrov Log
9 March	SAT	9:00	10:30	PNTE Training	Funpark Bobrov Log
		11:00	13:00	Parallel Nation Team Event	Funpark Bobrov Log
		end of comp.		Flower Ceremony PNTE	Funpark Bobrov Log
		13:15	13:30	Medal Awarding Ceremony PNTE	Funpark Bobrov Log

		14:00	15:00	Team Captains Meeting - SL W	Funpark Bobrov Log
10 March	SUN	8:45	9:30	Course Inspection SL W - 1st run	Funpark Bobrov Log
		10:00	11:20	Slalom W - 1st run	Funpark Bobrov Log
		12:00	12:30	Course Inspection SL W - 2nd run	Funpark Bobrov Log
		13:00	14:00	Slalom W - 2nd run	Funpark Bobrov Log
		end of comp.		Flower Ceremony W - SL	Funpark Bobrov Log
		14:15	14:30	Medal Awarding Ceremony SL W	Funpark Bobrov Log
		15:00	16:00	Team Captains Meeting - SL M	Funpark Bobrov Log
11 March	MON	8:45	9:30	Course Inspection SL M - 1st run	Funpark Bobrov Log
		10:00	11:30	Slalom M - 1st run	Funpark Bobrov Log
		12:00	12:30	Course Inspection M - 2nd run	Funpark Bobrov Log
		13:00	14:30	Slalom M - 2nd run	Funpark Bobrov Log
		end of comp.		Flower Ceremony M - SL	Funpark Bobrov Log
		14:45	15:00	Medal Awarding Ceremony SL M	Funpark Bobrov Log
12 March	TUE			Reserve Day	Funpark Bobrov Log

Ceremonies:

Flower ceremonies will be held immediately after the finish of the competition. Medal Awarding Ceremonies will be held approximately 15 min. after the end of the competitions. Medal Awarding times in the day by day schedule are subject to changes based on the finish time of the competition. For more information please refer to the chapter 5.10.

Training:

Beginning with February, 27, teams will be able to have training sessions in accordance with the Training Session Schedule below. The Schedule can be changed due to weather or other circumstances.

Teams can be provided with slalom poles for training sessions, though the quantity of the poles is limited. The Training Team of NTOs can assist in setting and repairing training courses which is to be agreed in advance.

The organisers will try to meet the needs of all teams. Yet our capacity is limited and we might have to distribute the teams for the courses evenly. In this case we will offer you other times.

Access to the courses will be given on preliminary application of the team.

- Applications for 27 February – 2 March should be sent to t.ryzhkova@krsk2019.ru (See Appendix 8.6)
- Applications for 3 March – 11 March will be collected at Team Captains' Meetings by Training Sessions Coordinator.

* - Training sessions for 11.03.2019 will be scheduled only in case of race delay for 12.03.2019

** - The last training session on Mar.02 will be shorter, as athletes will need to prepare for the Opening Ceremony.

Training sessions schedule:

Date/ Time	Course							
27.02.2019	2	3	7	89	10	12	13	14
8:00 - 10:00	x	x	x	x	x	x	x	x
10:00 - 12:00	x	x	x	x	SL	SL	x	GS
12:00 - 14:00	x	x	x	x	SL	SL	x	GS
14:00 - 16:00	x	x	x	x	SL	SL	x	GS

Date/ Time	Course							
28.02.2019	2	3	7	89	10	12	13	14
8:00 - 10:00	x	x	x	x	x	x	x	x
10:00 - 12:00	x	x	x	x	SL	SL	x	GS
12:00 - 14:00	x	x	x	x	SL	SL	x	GS
14:00 - 16:00	x	x	x	x	SL	SL	x	GS

Date/ Time	Course							
01.03.2019	2	3	7	89	10	12	13	14
8:00 - 10:00	x	x	x	x	x	x	x	x
10:00 - 12:00	x	x	x	x	SL	SL	x	GS
12:00 - 14:00	x	x	x	x	SL	SL	x	GS
14:00 - 16:00	x	x	x	x	SL	SL	x	GS

Date/ Time	Course							
02.03.2019	2	3	7	89	10	12	13	14
8:00 - 10:00	Warm-Up	x	x	x	x	x	x	x
10:00 - 12:00	Warm-Up	SL	x	SG	SL	SL	x	SL
12:00 - 14:00	SG	SL	x	x	SL	SL	x	SL
14:00 - 15:00**	SG	SL	x	x	SL	SL	x	SL

Date/ Time	Course							
03.03.2019	2	3	7	89	10	12	13	14
8:00 - 10:00	Warm-Up	x	x	x	x	x	x	x
10:00 - 12:00	Warm-Up	SL	x	x	SL	SL	x	SL
12:00 - 14:00	SG	SL	x	x	SL	SL	x	SL
14:00 - 16:00	SG	SL	x	x	SL	SL	x	SL

Date/ Time	Course							
04.03.2019	2	3	7	89	10	12	13	14
8:00 - 10:00	Warm-Up	Warm-Up	x	x	x	x	x	x
10:00 - 12:00	Warm-Up	Warm-Up	x	x	SL	SL	x	SL
12:00 - 14:00	Warm-Up	Warm-Up	x	x	SL	SL	x	SL
14:00 - 16:00	Warm-Up	Warm-Up	x	x	SL	SL	x	SL

Date/ Time	Course							
05.03.2019	2	3	7	89	10	12	13	14
8:00 - 10:00	Warm-Up	Warm-Up	x	x	x	x	x	x
10:00 - 12:00	Warm-Up	Warm-Up	x	x	SL	GS	x	GS
12:00 - 14:00	Warm-Up	Warm-Up	x	x	SL	GS	x	GS
14:00 - 16:00	Warm-Up	Warm-Up	x	x	SL	GS	x	GS

Date/ Time	Course							
06.03.2019	2	3	7	89	10	12	13	14
10:00 - 12:00	GS	SL	x	x	SL	GS	x	GS
12:00 - 14:00	GS	SL	x	x	SL	GS	x	GS
14:00 - 16:00	GS	SL	x	x	SL	GS	x	GS

Date/ Time	Course							
07.03.2019	2	3	7	89	10	12	13	14
8:00 - 10:00	Warm-Up	x	x	x	x	x	x	x
10:00 - 12:00	Warm-Up	x	GS	GS	SL	GS	x	GS
12:00 - 14:00	Warm-Up	x	GS	GS	SL	GS	x	GS
14:00 - 16:00	Warm-Up	x	GS	GS	SL	GS	x	GS

Date/ Time	Course							
08.03.2019	2	3	7	89	10	12	13	14
8:00 - 10:00	Warm-Up	x	x	x	x	x	x	x
10:00 - 12:00	Warm-Up	x	SL	SL	SL	SL	x	SL
12:00 - 14:00	Warm-Up	x	SL	SL	SL	SL	x	SL
14:00 - 16:00	Warm-Up	x	SL	SL	SL	SL	x	SL

Date/ Time	Course							
09.03.2019	2	3	7	89	10	12	13	14
8:00 - 10:00	x	x	x	x	Warm-Up	Warm-Up	x	Warm-Up
10:00 - 12:00	SL	SL	SL	SL	Warm-Up	Warm-Up	x	Warm-Up
12:00 - 14:00	SL	SL	SL	SL	SL	SL	x	SL
14:00 - 16:00	SL	SL	SL	SL	SL	SL	x	SL

Date/ Time	Course							
10.03.2019	2	3	7	89	10	12	13	14
8:00 - 10:00	Warm-Up	Warm-Up	x	x	x	x	x	x
10:00 - 12:00	Warm-Up	Warm-Up	SL	SL	SL	SL	x	SL
12:00 - 14:00	Warm-Up	Warm-Up	SL	SL	SL	SL	x	SL
14:00 - 16:00	Warm-Up	Warm-Up	SL	SL	SL	SL	x	SL

Date/ Time	Course							
11.03.2019*	2	3	7	89	10	12	13	14
8:00 - 10:00	Warm-Up	Warm-Up	x	x	x	x	x	x
10:00 - 12:00	Warm-Up	Warm-Up	SL	SL	SL	SL	x	SL
12:00 - 14:00	Warm-Up	Warm-Up	SL	SL	SL	SL	x	SL
14:00 - 16:00	Warm-Up	Warm-Up	SL	SL	SL	SL	x	SL

Reserve Day:

The OC will do its best to hold all competitions in the scheduled days. However, under exceptional weather conditions the competitions may have to be reported to the next day.

General Technical Meeting

The GTM – General Technical Meeting (1st Team Captains Meeting) will be held on the 1 March at 16:00 in the office 3-16 on the 3rd floor of the Sports Training Complex at the Funpark Bobrov Log.

At the first General Technical Meeting, the Head of Delegation or his/her representative shall confirm and sign the official entry list of competitors.

Only competitors with an active FIS code are allowed to participate in each alpine skiing event. Entries are controlled by the Organiser and the FIS Technical Delegate. Only accredited athletes can be considered for the draw of a starting list.

5.8. EQUIPMENT

Clothing and equipment control will in principle follow FIS rules. The equipment control will be carried out in respect of the recent technical FIS regulations if no additional FISU rule is to be determined. Each competitor is responsible for the equipment that he/she uses (skis, bindings, ski boots, helmets, suit, etc). The term competition equipment encompasses all items of equipment which the competitor uses in a competition. This includes clothing as well as apparatus with technical functions. The entire competition equipment forms a functional unit. All equipment used by Athletes is governed by the FIS Specifications for Competition Equipment.

<https://res.cloudinary.com/fis-production/image/upload/v1537273911/fis-prod/assets/Specifications for Alpine Competition Equipment.pdf>

5.9. DOPING CONTROL

5.9.1. DOPING CONTROL

Doping Control will be carried out in accordance with the WADA World Anti-Doping Code and FISU regulations. Conditions for doping control procedures will be provided during the competitions at all sports venues.

5.9.2. LIST OF PROHIBITED SUBSTANCES

The actual list of prohibited substances and methods is defined in accordance with WADA international standards. National University Sports Federations will be responsible for ensuring that their delegations, namely athletes, are made aware of the actual copy of The Prohibited List. Ignorance of the Prohibited List contents will in no way constitute a valid excuse for any participant of the Winter Universiade violating valid anti-doping rules. For the WADA list of prohibited substances and methods, please refer to the following website: www.wada-ama.org.

5.9.3. TESTING

The required number of samples will be selected during the competition and non-competition periods in accordance with the Test Distribution Plan developed by the Organising Committee under the supervision of the FISU CMI. During the Universiade, athletes can be tested at any time without prior notice. The testing will be conducted by Doping Control Officers (DCO) from an anti-doping organization accredited by WADA. Testing will be conducted under the supervision of the FISU Medical Committee. Doping samples will be sent to the WADA-accredited anti-doping laboratory. All results will be sent to the Chairman of the FISU Medical Committee and entered into the ADAMS system. In case of violation of Anti-Doping Rules, the responsibility for processing the results lies with the FISU Medical Committee.

In case of setting a national record, doping testing of the athlete is carried out at the expense of his National University Sports Federation.

5.9.4. DOPING CONTROL STATIONS

Ten doping control stations are located at sports venues. The 11th doping control station is located in the Medical Centre of Universiade Village. All doping control stations will be marked with signs and the way to them will be shown by the signage. After the completion of the doping control procedure, all samples collected at each doping control station will be delivered to the central doping control station together with the necessary support documentation (doping control protocols) for further registration in the ADAMS system. All samples will be packaged and sent to the WADA accredited anti-doping laboratory in accordance with the international standards. All the information concerning the doping control programme during the Winter Universiade is confidential according to WADA and FISU requirements. When visiting a doping control station athletes are required to have accreditation cards.

Doping Control Station for alpine skiing athletes will be allocated at the 2nd floor of Sports Training Complex in Funpark Bobrov Log.

5.9.5. THERAPEUTIC USE EXEMPTIONS (TUE)

Universiade participants who require Therapeutic Use Exemption (TUE) must make an appropriate request to the National Anti-Doping Organization or International Sports Federation before participation in the Universiade. The World Anti-Doping Agency International Standard for TUE will be applied in this case. Every athlete who uses a substance or a method included in the List of prohibited substances is obliged to be in possession of a completed TUE form of the established standard from the moment of arriving until the departure from the Universiade Village after the Closing Ceremony of the Universiade.

If there is a need in the use of a prohibited substance or a prohibited method for medical reasons after the opening of the Winter Universiade, an athlete must submit a request for TUE to the FISU TUE Committee as a matter of urgency. The responsibility for completing the TUE form and submitting an application to the FISU TUE Committee lies with the delegation physician. If the delegation does not have its own physician the athlete shall submit a request for TUE with the attachment of medical documentation confirming the fact of providing him/her with emergency medical treatment to the FISU TUE Committee.

5.9.6. CONTACT DETAILS

Head of the Anti-Doping division	Maksim VEREVKIN Tel.: +7 923 377 2019 Email: m.verevkin@krsk2019.ru
----------------------------------	---

5.10. AWARDS AND MEDALS

5.10.1. FLOWER CEREMONY

Flower Ceremonies will take place after the end of each race in the immediate vicinity of the finish zone.

5.10.2. MEDAL AWARDING CEREMONY

The Medal Awarding Ceremonies will be held at the venue at the end of the competition accordingly to the detailed schedule by sport (approximately 15 min. after the end of the competitions). For the day by day schedule please refer to the chapter 5.7.

The official languages for the Medal Awarding Ceremonies will be Russian and English.

The medallists of each event must attend the Medal Awarding Ceremony.

In case a medallist is unable to attend, the medal and bouquet are delivered to an official of the relevant delegation, which shall wear the uniform of the delegation to take part in the ceremony. The official must not mount the podium but walk in front of it and take the medal and bouquets in his/her hands.

In case all the winners cannot be present, the ceremony is postponed.

During the Medal Awarding Ceremony:

- The athletes are not allowed to take any national flag or any other national, cultural or religious symbol on the podium;
- The national flags of the first three (3) medallists will be raised and the only anthem played will be the FISU anthem, the Gaudeamus Igitur;
- During the playing of the FISU anthem and the raising of the flags, they shall face the flags and conduct themselves in a dignified manner at all times. No national anthem is played during the ceremony;
- Athletes are expected to take off their caps when receiving the medal and keep it in hand throughout the ceremony (i.e. playing of the FISU anthem and raising of the flags);
- Athletes, authorities and accompanying persons are required to face the flags while they are being raised and the FISU anthem is being played.
- The athletes must wear their delegation's approved uniform or the uniform with which they competed if the ceremony takes place right after the end of the competition and at the same venue.
- After the medals are awarded athletes must remain in the awarding area for photo shooting on the podium with medals.
- In order to take the best photo during the shooting athletes should follow the recommendations of photographers.
- After the Medal Awarding Ceremony and the official shooting on the podium the medallists/coaches are invited to the press conference. Athletes must bring their medals to the press conference.

5.11. DIPLOMA OF HONOURS

The athletes ranked one (1) to eight (8) will receive a Diploma of Honours.

For team events, each team member will receive a personal diploma of honour mentioning his/her name and the team ranking.

Diplomas of honours are not distributed to winners at the Medal Awarding ceremony. They are handed to the Head of Delegation or an appointed representative of each delegation in the Universiade Village at a later time. If an athlete or team is disqualified, the diploma(s) shall be returned to FISU.

5.12. PRESS INTERVIEWS

Venue Press Centres for media representatives are organised at all Winter Universiade 2019 competition sites. The Press Conference Hall in Funpark Bobrov Log is located on the third floor of Sport Training Complex.

At the end of a competition, all athletes must leave the field of play through the mixed zone where brief interviews will be held. Every athlete/coach should be ready to communicate with media representatives upon their request. In case of cold weather, team representatives should give an athlete a warm jacket or a blanket prior to entering the mixed zone.

After the award ceremony, all competition medalists and/or their coaches will be invited to participate in the post-competition press conference. A volunteer from the Venue Press Centre will invite and then accompany athletes/coaches to the press conference room. Athletes must bring their medals to the press conference.

Simultaneous interpretation in English and Russian will be provided during the press conference. If a press conference participant does not speak either of these languages, they should invite their team interpreter to the press conference.

To accommodate individual interviews, special rooms in the Main Press Centre and Universiade Village will be provided. Accredited journalists and delegation attachés may use these rooms only after making an interview arrangement with an athlete or a coach.

5.13. SPORT INFORMATION SERVICES

5.13.1. ON-LINE SPORT INFORMATION SERVICES

Internet address:	https://krsk2019.ru/
-------------------	---

5.13.2. SPORT INFORMATION CENTRE (SIC) AT THE UV

The Sport Information Centre is located on the second floor of the Congress hall SFU in the International Zone at the Universiade Village and provides the following information/services to delegations during the Krasnoyarsk 2019 Winter Universiade:

- Distribution of Technical Handbooks
- Competition schedule
- Training schedule
- Technical meeting information
- Distribution of daily sport results

The Sport Information Centre will operate between 07:00 to 23:00 from 23 February to 14 March 2019.

5.13.3. SPORTS INFORMATION AT THE VENUE

A Sport Information Desk (SID) will be located at each venue, will distribute most recent information related to the competitions to the SID and receive requests from the team representative(s).

The Sport Information Desk will operate from 2 March to 12 March 2019 in accordance with the competitions and training schedules (2 hours before and after the events).

5.13.4. SPORTS INFORMATION DISTRIBUTION

Information	Online	Venue	UV SIC	ITO Hotel
Competition Schedule	+	+	+	+
Start list / Result list	+	+	+	+
Change to Schedules	+	+	+	+
Special announcements and urgent notice		+	+	+
Weather Information	+	+	+	+
Medal table	+			
Technical Handbook	+		+	+
Regulations for the WU2019	+			
Non sport information (transport, catering, etc)		+	+ (MIC)	+
Answer and follow up to teams questions		+	+	+

6. SERVICE INFORMATION

6.1. RADIO FREQUENCY CONTROL

6.1.1. GENERAL INFORMATION

At the sport venues of the Winter Universiade Krasnoyarsk 2019 for all participants there will be restrictions applied to the use of radio electronic high frequency devices (hereinafter, REDs), namely: radio stations, Wi-Fi access points, radio microphones and other wireless equipment.

All the users of REDs have to get a permission to use radio equipment. Before using REDs, one has to have it tested and marked with special labels.

Information on the location of the testing and marking points and the full procedure of getting a permit to use of REDs is available at the Winter Universiade Krasnoyarsk 2019 official website: <https://krsk2019.ru/en/pages/radio equip>.

At the venue entrance, all non-marked radio electronic devices will be placed into special lockers and will be returned to the owners upon exiting the venue.

6.1.2. CONTACT DETAILS

Head of Radio Frequency Planning and Control Division	Timofey SUKHANOV Email: t.sukhanov@krsk2019.ru
Head of Communication Organisation Department	Irina LUCHKO Email: i.luchko@krsk2019.ru

6.2. ACCREDITATION

Location of the Main Accreditation Centre:

The Main Accreditation Centre is located in the International Zone of the Universiade Village.

IMPORTANT: No athlete will be allowed to attend official training or competition without the Accreditation Card. Temporary cards do not allow athletes to take part to official trainings and competitions.

6.3. SKI PASS

Access to ski lifts for training sessions and competition events will be given at submission of accreditation badges (or start bibs on the day of competition).

6.4. STORAGE AND WAX ROOMS

6.4.1. STORAGE AND WAX ROOMS AT THE UNIVERSIADE VILLAGE

Underground parking in the residential Zone of the Universiade Village will be used to cover teams' needs on sport equipment storage and equipped waxing rooms. In total 24 wax-cabins will be available for alpine skiing athletes. The waxing area is equipped with tables for ski preparation, lighting, electric outlets, adequate heating and ventilation, waste bins. Wax irons can be ordered in the Rate Card Catalogue https://krsk2019.ru/en/pages/rate_card

6.4.2. WAXING AREA AT FUNPARK BOBROVY LOG

Storage room and waxing area will be available in Sport Training Complex building from 8:00 until 16:00.

The waxing area is equipped with tables for ski preparation, lighting, electric outlets, adequate heating and ventilation, waste bins, vises and wax irons.

6.5. TRANSPORTATION

6.5.1. TRANSPORTATION SYSTEM FOR ATHLETES AND TEAM OFFICIALS (TA)

The transportation system for athletes and official delegation members will provide transport services from 23 February to 14 March 2019. Detailed information on transportation including bus schedules is provided in Transportation Guide.

Buses will be available from the Transportation Mall of the Universiade Village. Bus stations will be designated for each route. Transportation vehicles will have placards indicating a route code and destination (e.g. sports venue). The OC transportation staff will coordinate the allocation of transport and provide assistance in picking up and dropping off the athletes and officials at the venue bus stations.

Routes in the transportation system for athletes and official delegation members are marked with the abbreviation "TA" (Transport Athletes). Vehicles are being equipped with placards indicating route number for the individual, team sports and athletes-spectators.



Example of a bus / minibus placard

6.5.2. TRANSPORTATION SCHEDULE FOR ALPINE SKIING

Transportation of athletes in individual sports to the competition and training venues from the Universiade Village and back is organised on regular routes by shuttle buses system within 15-60 min interval.

Buses will be available at the Transportation Mall of the Universiade Village.

Route number	Sport	Route	Distance to UV	Travel Time
TA 006	Figure Skating	UV – Funpark Bobrov Log - UV	11 km	20 min

NOTE: Each bus is followed by a truck transporting skis. The skis are delivered to and from the venue by the sealed trucks. The loading of the skis into the trucks is carried out at the Transportation Mall. Other sports equipment is transported in the baggage compartment of the bus. Athletes are to bring their own equipment from the storage to the bus and back.

6.5.3. TRANSPORTATION SERVICES FOR SPECTATING ATHLETES AND OFFICIALS (TS)

Special shuttle buses which run between the Universiade Village and the competition venues are provided for the spectating athletes from 1 to 12 March 2019.

Transport for spectating athletes will operate in accordance with the competition schedule. All athletes, regardless of their delegation and sport, will have access to the bus transportation systems for spectating athletes.

Following routes will be used for spectating athlete transportation services:

Route number	Route	Sport
TS 001	Sopka Cluster - Biathlon Academy Multifunctional Complex	Snowboard / Freestyle Skiing / Biathlon
TS 002	Raduga Cluster	Cross-Country Skiing / Ski Orienteering
TS 003	Ivan Yarygin Sports Palace	Curling
TS 004	Arena Sever Multifunctional Complex	Short Track Speed Skating / Ice Hockey W*
TS 005	Crystal Ice Arena	Ice Hockey M
TS 006	Yenisei Ice Stadium / Pervomaisky Ice Arena	Bandy / Ice Hockey W*
TS 007	Platinum Arena Ice Arena	Figure Skating / Synchronized Skating
TS 008	Funpark Bobrov Log	Alpine Skiing

* Pervomaisky Ice Arena will host Ice Hockey W competitions from 1 to 8 March 2019, the spectating athletes route is TS 006. On 10 & 11 March 2019 the route will be changed to TS 004 as the competitions will be held at Arena Sever.

Detailed timetable will be available in WU2019 Transportation Guide.

6.6. FOOD AND BEVERAGES

6.6.1. UV MAIN DINING HALL

Main Dining Hall offers catering services based on a daily nutrition (breakfast, lunch, dinner, late dinner). Opening hours of the Main Dining Hall from 5:00 to 1:00, during Universiade Village opening period from 23 February till 14 March 2019.

6.6.2. F&B SERVICES AT THE COMPETITIONS VENUES

At the competition venues, refrigerators with bottled water at room temperature, soft drinks and isotonic, dispensers for hot drinks, a buffet table with fruits, muesli, bars, nuts and dried fruits will be provided in athletes lounges/changing rooms.

Hot meals for delegations will be provided at Funpark Bobrov Log.

The Dining hall for athletes in Funpark Bobrov Log is located on the third floor of Sport Training Complex.

6.7. MEDICAL SERVICES

6.7.1. GENERAL INFORMATION

The Organising Committee will provide all accredited persons with free emergency medical care (diagnosis/treatment and local transportation) of all injuries and illnesses directly and indirectly related to the concerned FISU Event. This obligation will begin from the day of the opening of the Universiade Village until two (2) days following the closing ceremony (23 February – 14 March 2019).

For the secondary or non-emergency treatment, participants must have their own appropriate insurance.

6.7.2. MEDICAL CENTRE AT THE UNIVERSIADE VILLAGE

In the Universiade Village a medical centre for provision of primary health care and specialized medical care will operate from 8 to 22 hours daily, providing emergency care 24 hours a day.

To provide an emergency medical care and medical evacuation to the dedicated hospitals on the territory of the medical centre, the ambulance cars of B and C classes are provided with a general and specialized ambulance teams.

Universiade Village Medical Centre will provide medical services to accredited client groups from 23 February to 14 March 2019.

Medicines prescribed by the physician of the medical centre in a single dose on the day of appeal will be provided free of charge at the pharmacy 24 hours a day, 7 days a week. Orthopaedic appliances (canes, crutches) and wheelchairs for the displacement of injured patients, if required, will be given for temporary use. On the territory of the Universiade Village it is planned to place automatic electronic defibrillators within their strategic accessibility.

Full information will be available in WU2019 Medical Guide.

6.7.3. MEDICAL SERVICES FOR ATHLETES AT THE SPORTS VENUES

Medical Aid Station

At the sports venues of the Winter Universiade 2019 an athlete medical station (AMS) is provided. AMS provides emergency and specialized medical aid to athletes. It has a doctor in sports medicine, a nurse, and a doctor-volunteer.

AMS working schedule: 1 hour before the start of the competition/official training and within 1 hour after the end of the competition/official training. Medical aid stations have all the required medical equipment, medicines and medical products to provide the set scope of medical aid.

Athlete Medical Centre at Funpark Bobrov Log is located on the second floor of Sport-Training Complex.

Mobile medical teams

Mobile medical teams (MMT) for emergency medical aid at the field of play are formed in accordance with the International requirements for the sports held.

The team comprises: a traumatologist (expert in resuscitation), two rescuers with "Akya" type of rescue sleigh;

MMTs are located on mountain slopes depending on the type of the sports discipline and provide the required standard of equipment for emergency medical support.

Working schedule of MMT: 1 hour before the start of the competition/official training and within 1 hour after the competition/official training.

Ambulance cars

During the competition, all sports venues are provided with at least two ambulance cars of B and C classes with general and specialized teams. Ambulance teams are located in close proximity to the finish zone.

6.7.4. CONTACT DETAILS

Head of Medical Care Department	Maxim SUVOROV Tel: +7 923 549 2019 Email: m.suvorov@krsk2019.ru
Head of Medical Care Division	Elena MIKHAILENKO Tel: +7 933 329 2019 Email: e.mikhaylenko@krsk2019.ru

7. OC CONTACTS

ANO "Directorate Krasnoyarsk 2019"	19 Mira Av., build. 1, Krasnoyarsk 660049 007 (391) 291-8080 conference@krsk2019.ru
Delegation services	delegation.services@krsk2019.ru
Accreditation	acr02@krsk2019.ru
Department of Sports	sports@krsk2019.ru
Sports Entries	sport.entries@krsk2019.ru
Arrivals and departures / Transportation	a-d@krsk2019.ru

8. APPENDICES

8.1. 29TH WINTER UNIVERSIADE 2019 KRASNOYARSK COMPETITION SCHEDULE

Version: 01.02.2019 Subject to change

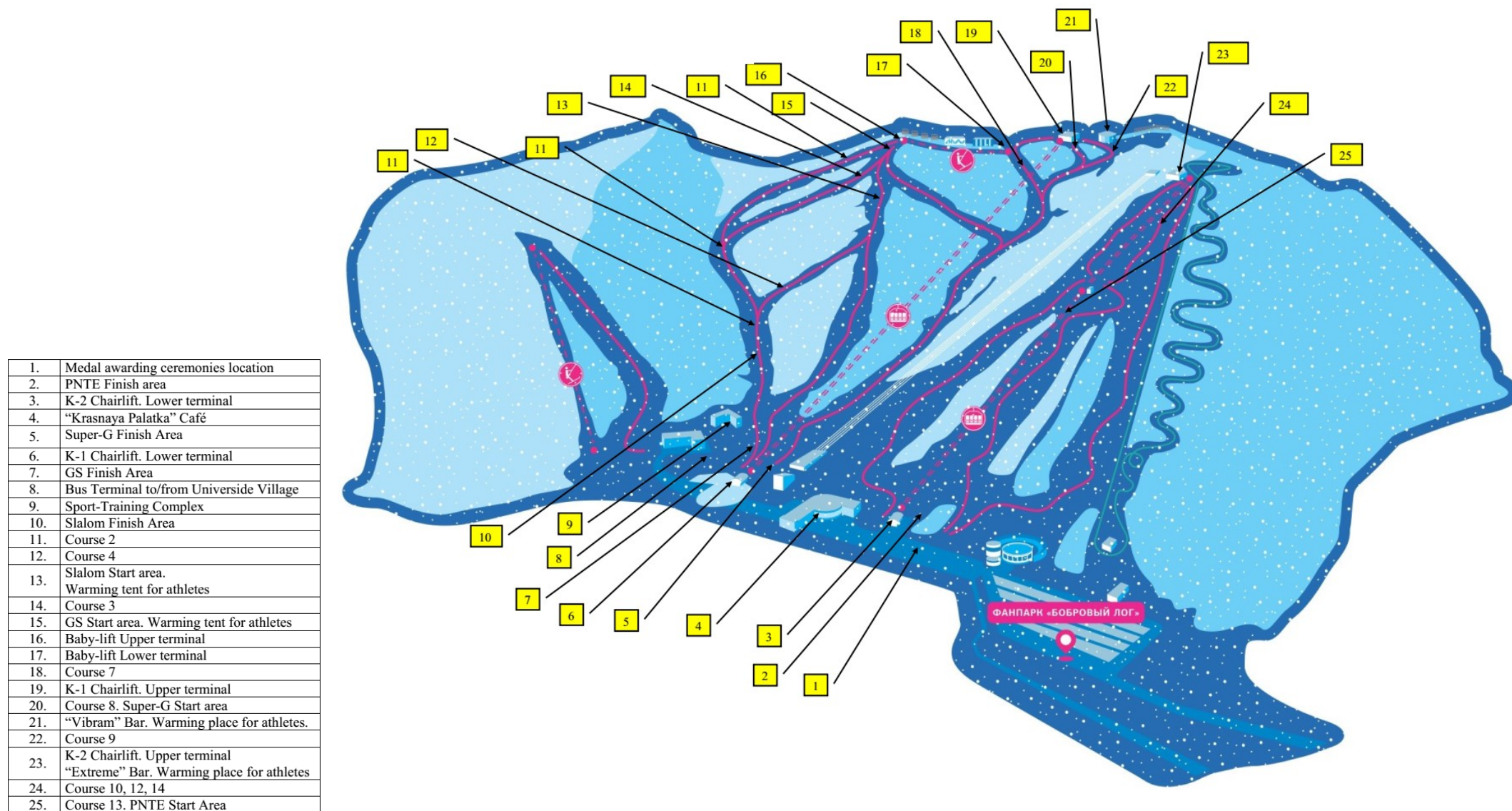


	FRI March 1	SAT March 2	SUN March 3	MON March 4	TUE March 5	WED March 6	THU March 7	FRI March 8	SAT March 9	SUN March 10	MON March 11	TUE March 12	#Events
	CEREMONIES Platinum Arena FISU WORLD CONFERENCE Grand Hall Siberia	Platinum Arena 20:19 Opening Ceremony	Platinum Arena 14:00 «WU 2019» Show		Grand Hall Siberia FISU World Conference	Grand Hall Siberia FISU World Conference	Grand Hall Siberia FISU World Conference					Platinum Arena 20:00 Closing Ceremony	
ALPINE SKIING Funpark Bobrov Log		10:00-12:00 Official Free Skiing on Super-G course	Super-G W/M 10:30 Super-G W 13:00 Super-G M	Alpine Combined W 10:00 AC - SG 13:30 AC - SL	Alpine Combined M 10:00 AC - SG 13:30 AC - SL	Reserve day	Giant Slalom W 10:00 1 st run 13:00 2 nd run	Giant Slalom M 10:00 1 st run 13:00 2 nd run	Parallel Nations Team Event 11:00	Slalom W 10:00 1 st run 13:00 2 nd run	Slalom M 10:00 1 st run 13:00 2 nd run	Reserve day	9
SNOWBOARD Sopka Cluster	Snowboard Cross 09:30-11:00 Official Training M 11:30-13:00 Official Training W	Snowboard Cross W/M 09:30-10:30 Official Training 11:00-13:00 Qualifications	Snowboard Cross W/M 09:30-10:10 Off. Training 10:30-12:30 Qualifications (Round Robin) 13:30-14:30 SF & Finals	Parallel Giant Slalom 09:00-11:00 Unofficial Training 13:30-15:00 Unofficial Training	Parallel Giant Slalom W/M 09:30-11:30 Qualifications 13:00-15:00 Finals	Parallel Slalom W/M 09:30-11:30 Qualifications 13:00-15:00 Finals Halfpipe 19:00-21:00 Off. Training	Reserve day Halfpipe 19:00-21:00 Off. Training	Slopestyle 11:30-13:30 Off. Training Halfpipe W/M 16:30-17:30 Off. Training 17:45-19:25 Qualifications 20:00-20:45 Off. Training 21:00-22:00 Finals	Slopestyle 11:30-13:30 Off. Training	Slopestyle W/M 09:00-09:45 Off. Training 10:00-12:00 Qualifications 14:00-15:00 Finals	Reserve day		10
FREESTYLE SKIING Sopka Cluster	Aerials 16:30-19:00 Official Training	Aerials 12:30-15:00 Official Training	Aerials W/M 14:00-16:00 Off. Training 16:30-18:30 Qualifications 19:30-20:30 Finals	Slopestyle 11:00-13:30 Off. Training Mixed Team Aerials 16:00-17:30 Off. Training 18:00-19:00 Qualifications 19:30-20:30 Finals	Slopestyle 11:00-13:30 Official Training	Slopestyle W/M 09:30-10:30 Off. Training 11:00-14:00 Qualifications 15:30-16:30 Finals	Moguls 16:30-19:00 Official Training Reserve day	Moguls 16:30-19:00 Official Training	Ski Cross 09:00-13:00 Off. Training	Ski Cross 09:00-13:00 Off. Training	Ski Cross W/M 09:00-10:00 Off. Training 10:30-11:30 Qualifications 11:40-12:55 Round Robin 13:30-14:30 SF & Finals	Reserve day	11
BIATHLON Biathlon Academy		Unofficial Training 10:00-12:00 W 13:00-15:00 M	Individual Official Training 10:00-12:00 W 13:00-15:00 M	Individual W/M 10:00-10:50 Zeroing W 11:00-12:45 IND 15km W 13:00-13:50 Zeroing M 14:00-15:45 IND 20km M	Sprint Official Training 10:00-12:00 W 13:00-15:00 M	Sprint W/M 10:00-10:50 Zeroing W 11:00-12:15 SP 7.5km W 13:00-13:50 Zeroing M 14:00-15:10 SP 10km M	Pursuit W/M 10:15-10:45 Zeroing W 11:00-11:50 PUR 10km W 13:15-13:45 Zeroing M 14:00-14:50 PUR 12.5km M	Unofficial Training 10:00-12:00 Single Mixed Relay 13:00-15:00 Official Training	Single Mixed Relay 6km W + 7.5km M 13:15-13:45 Zeroing 14:00-14:45 SMR	Mass Start W/M 10:15-10:45 Zeroing W 11:00-11:45 MS 12.5km W 12:15-12:45 Zeroing M 13:00-13:45 MS 15km M	Reserve day		9
CROSS-COUNTRY SKIING Raduga Cluster	Unofficial Training 10:00-13:00	Individual (C) 10:00-13:00 Official Training W/M	Individual (C) W/M 08:00-09:55 Off. Training W 10:00-10:45 5km (C) W 10:45-11:25 Off. Training M 11:30-12:45 10km (C) M Pursuit (F) 14:00-15:30 Official Training W/M	Pursuit (F) W/M 08:00-09:55 Off. Training W 10:00-10:45 5km (F) W 10:45-11:25 Off. Training M 11:30-13:00 10km (F) M	Sprint (F) 10:00-13:00 Official Training W/M	Sprint (F) W/M 08:00-09:55 Off. Training W/M 10:00-11:00 Qualifications W/M 11:00-12:15 Off. Training W/M 12:30-14:00 Finals W/M	Mixed Team Sprint (C) 10:00-13:00 Official Training	Mixed Team Sprint (C) 08:00-09:55 Off. Training 10:00-11:00 Semi-Finals 11:00-11:55 Off. Training 12:00-12:30 Final Relay 16:00-18:00 Official Training W/M	Relay W/M 08:00-09:55 Off. Training W 10:00-11:00 5x5km (C+FF) W 11:00-11:55 Off. Training M 12:00-14:00 4x7.5km (CC+FF) M	Mass Start (F) 10:00-11:30 Official Training W	Mass Start (F) 09:30-11:25 Official Training 11:30-13:00 15km (F) W Mass Start (F) 13:00-15:00 Official Training M	Mass Start (F) 09:30-11:25 Official Training 11:30-13:30 30km (F) M	11
SKI ORIENTEERING Raduga Cluster	Unofficial Training 14:00-16:00	Unofficial Training 14:00-16:00	Sprint / Pursuit 15:30-17:30 Official Training M/W	Sprint M/W 15:00-16:30 M 16:45-17:30 W	Pursuit M/W 15:00-16:00 M 16:15-17:15 W	Sprint Relay 15:00-17:00 Official Training	Sprint Relay 16:00-17:30	Unofficial Training 13:00-15:00	Middle Distance 15:00-17:00 Official Training M/W	Middle Distance M/W 14:00-15:30 M 16:00-17:30 W	Reserve day		7
CURLING Ivan Yarygin Sports Palace		08:15-15:15 Official Practice	09:00 w1 14:00 M1 19:00 w2	09:00 M2 14:00 w3 19:00 M3	09:00 w4 14:00 M4 19:00 w5	09:00 M5 14:00 w6 19:00 M6	09:00 w7 14:00 M7 19:00 w8	09:00 M8 14:00 w9 19:00 M9	09:00 Playoff Games M/w (3 v 6) / (4 v 5) 16:00 Semi Finals M/w	09:00 Medal Games M 14:00 Medal Games w			2
ICE HOCKEY Men Crystal Ice Arena	09:00 LAT-SUI (1) 12:30 HUN-JPN (2) 16:00 CZE-USA (3) 19:30 SVK-RUS (4)	08:30 SUI-SWE (5) 11:45 CAN-GBR (6) 15:00 LAT-KAZ (7)	12:30 USA-HUN (8) 16:00 CZE-SVK (9) 19:30 SVK-JPN (10)	12:30 GBR-SUI (11) 16:00 CAN-LAT (12) 19:30 KAZ-SWE (13)	12:30 CZE-HUN (14) 16:00 SVK-JPN (15) 19:30 RUS-USA (16)	12:30 CAN-SUI (17) 16:00 LAT-SWE (18) 19:30 KAZ-GBR (19)	12:30 USA-SVK (20) 16:00 HUN-RUS (21) 19:30 JPN-CZE (22)	09:00 SVK-HUN (23) 12:30 GBR-LAT (24) 16:00 SWE-CAN (25) 19:30 SUI-KAZ (26)			16:00 SF#1 (31) 19:30 SF#2 (32)	11:00 Bronze (33) 15:00 Gold (34)	1
ICE HOCKEY Women Pervomaisky Ice Arena Arena Sever	12:30 JPN-USA (1) 16:00 CHN-USA (2) 19:30 SUI-RUS (3)		12:30 CAN-JPN (4) 16:00 USA-SUI (5) 19:30 RUS-CHN (6)	12:30 CAN-USA (7) 16:00 SUI-CHN (8) 19:30 RUS-JPN (9)		12:30 CHN-JPN (10) 16:00 CAN-SUI (11) 19:30 USA-RUS (12)		12:30 JPN-SUI (13) 16:00 USA-CHN (14) 19:30 RUS-CAN (15)		Arena Sever 16:00 SF#1 (16) 19:30 SF#2 (17)	16:00 Bronze (18) 19:30 Gold (19)		1
SHORT TRACK Arena Sever		Unofficial Training 09:00-15:00	Official Training 09:00-20:00	14:00 500m W/M Followed by Heats 3000m Relay W Heats 5000m Relay M	14:00 500m W/M Followed by SF 3000m Relay W SF 5000m Relay M	14:00 1000m W/M Followed by F 3000m Relay W F 5000m Relay M							8
FIGURE SKATING Platinum Arena Rassvet Ice Palace (practice ice rink)			Rassvet Ice Palace Unofficial Practice	Rassvet Ice Palace Unofficial Practice	Official Practice	Pairs 14:30 Short Program Men 17:00 Short Program	Ice Dance 13:00 Rhythm Dance Pairs 16:00 Free Skating Men 19:00 Free Skating	Syn. Skating 13:00 Short Program Ladies 14:00 Short Program Ice Dance 19:30 Free Dance	Syn. Skating 10:45 Free Skating Ladies 12:00 Free Skating Exhibition 19:00 EXH				5
BANDY Women Yenisei Ice Stadium	11:00 SWE-USA (1) 14:00 RUS-NOR (2)		10:00 NOR-USA (3) 13:00 RUS-SWE (4)	13:00 SWE-NOR (5)	13:00 USA-RUS (6)	10:00 SF#1 (7) 13:00 SF#2 (8)		15:00 Bronze (9) 19:00 Gold (10)					1
BANDY Men Yenisei Ice Stadium	17:00 SWE-NOR (1) 20:00 RUS-KAZ (2)	11:00 FIN-SWE (3) 14:00 RUS-BLR (4)	16:00 BLR-NOR (5) 19:00 FIN-KAZ (6)	16:00 SWE-KAZ (7) 19:00 NOR-RUS (8)	16:00 KAZ-NOR (9) 19:00 BLR-FIN (10)	16:00 SWE-BLR (11) 19:00 FIN-RUS (12)	16:00 NOR-FIN (13) 19:00 KAZ-BLR (14)	12:00 RUS-SWE (15)	11:00 5-6 place (16) 15:00 SF#1 (17) 19:00 SF#2 (18)	15:00 Bronze (19) 19:00 Gold (20)			1
Awarding Ceremonies			8	10	7	12	6	6	8	12	5	2	76

All Medal Awarding Ceremonies will take place at the venue at the end of the competition accordingly to the detailed schedule by sport.

8.2. VENUE LAYOUTS

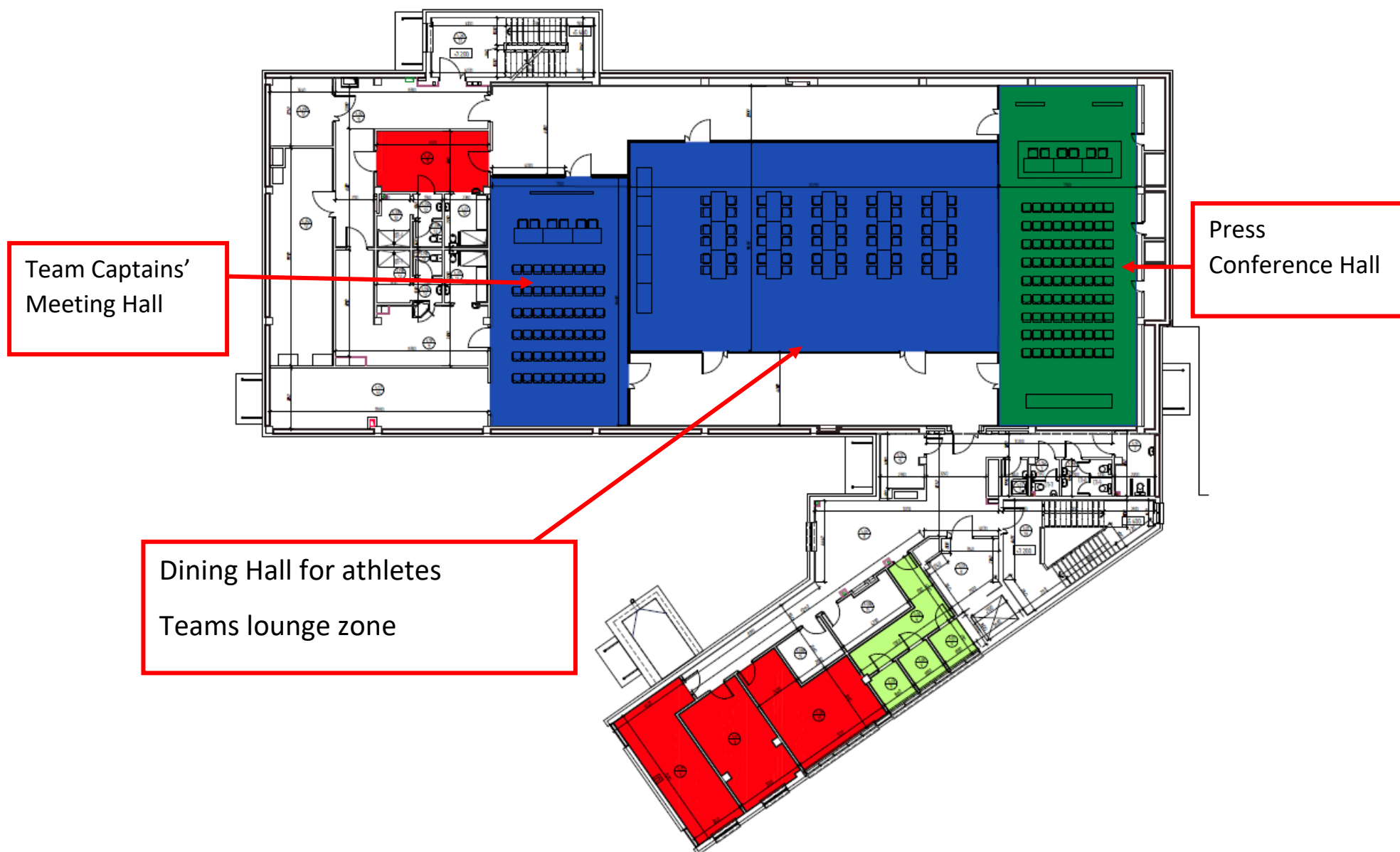
8.2.1. FUNPARK BOBROVY LOG GENERAL LAYOUT



8.2.2. SPORTS TRAINING COMPLEX 2ND FLOOR

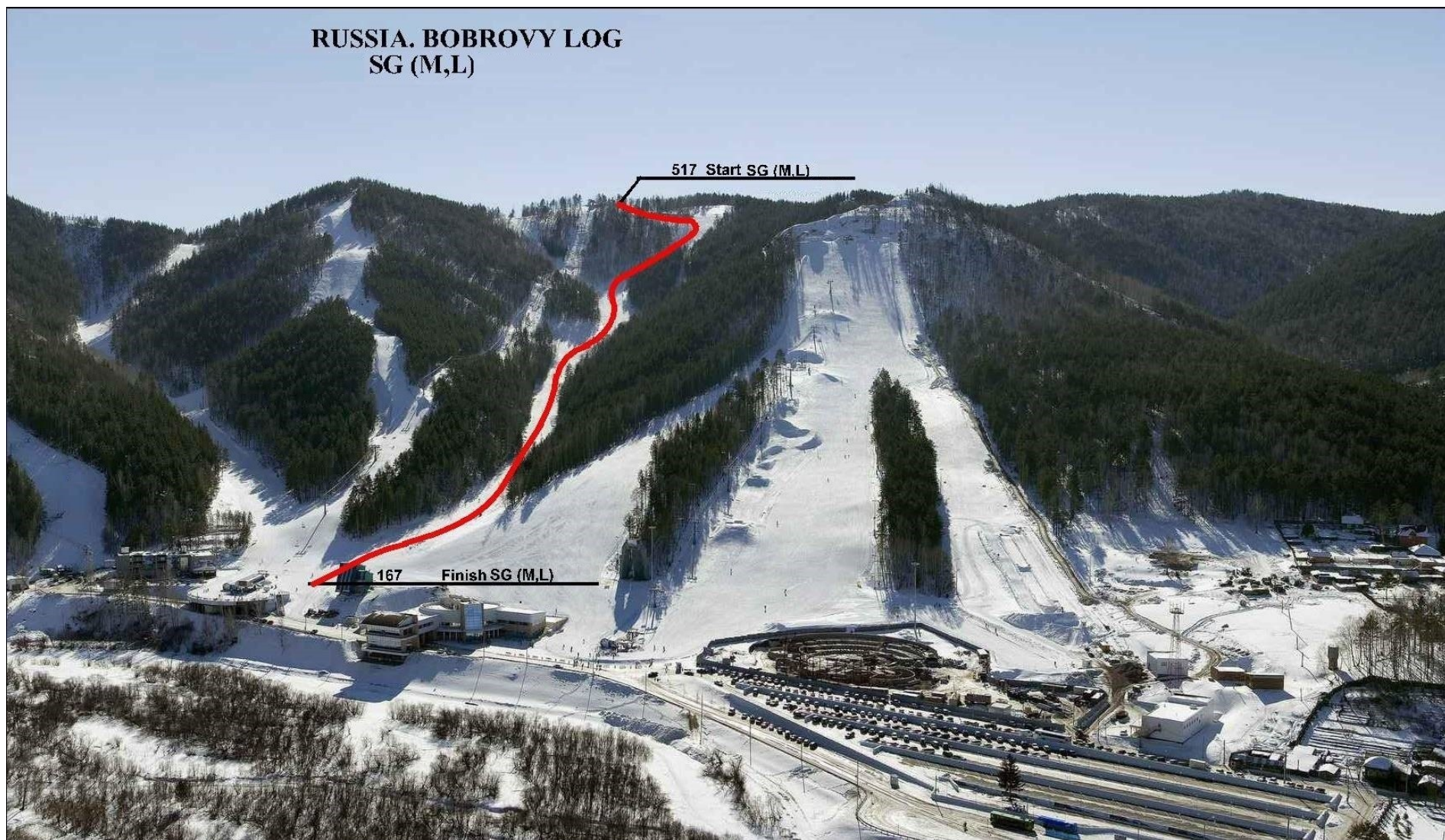


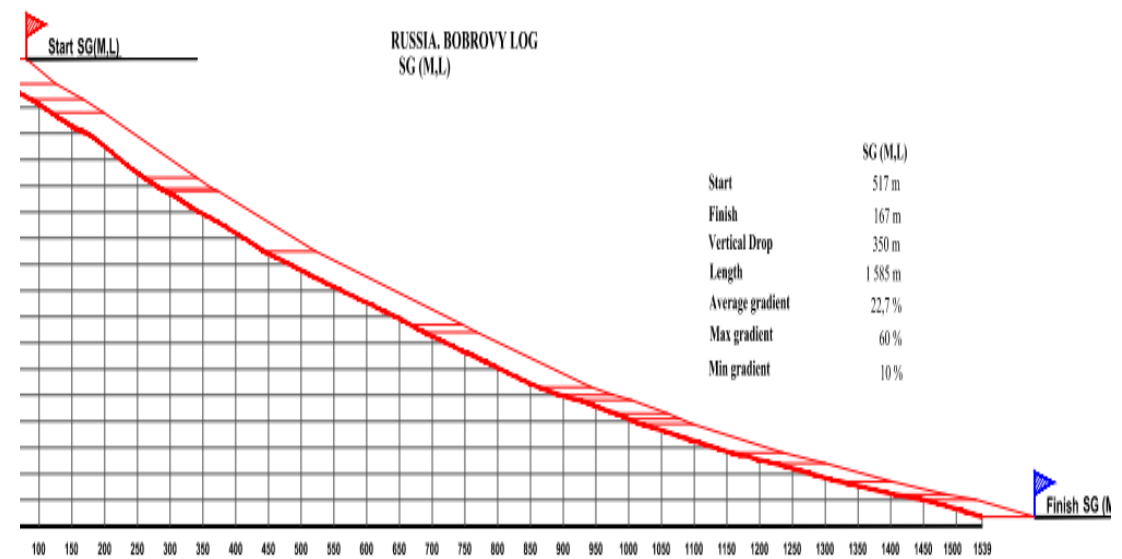
8.2.3. SPORTS TRAINING COMPLEX 3RD FLOOR



8.3. PROFILE OF THE SLOPES

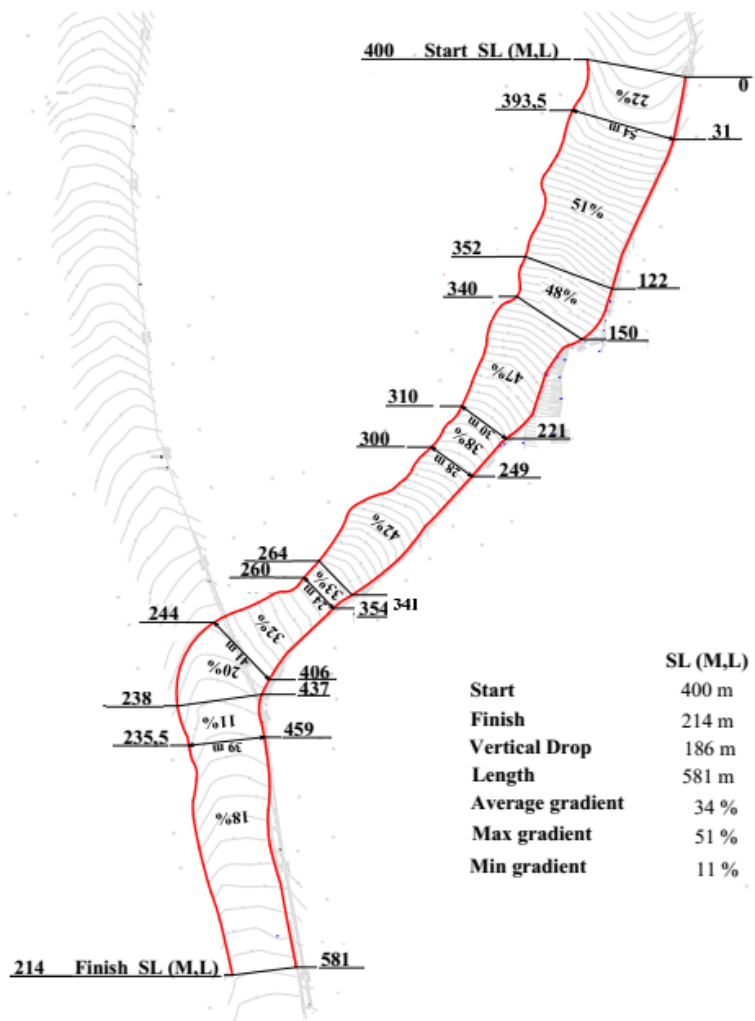
8.3.1. SUPER-G (SG)



[illegible]

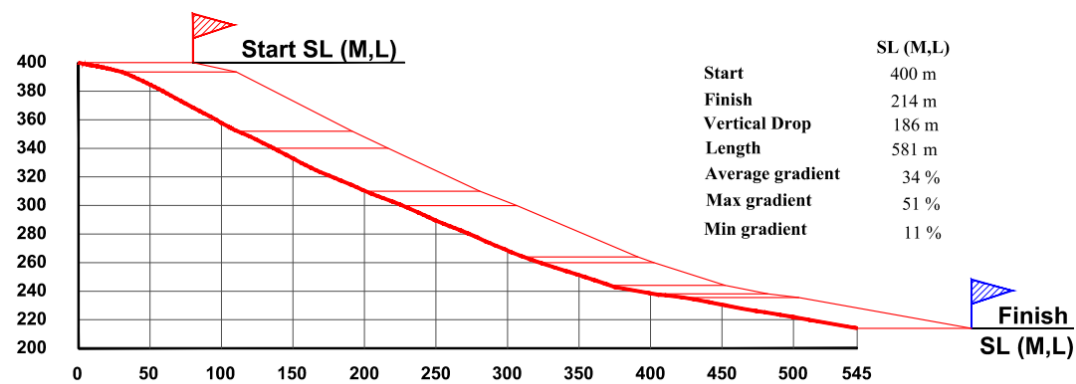
8.3.2. SLALOM (SL)





RUSSIA. BOBROVY LOG
SL (M,L)

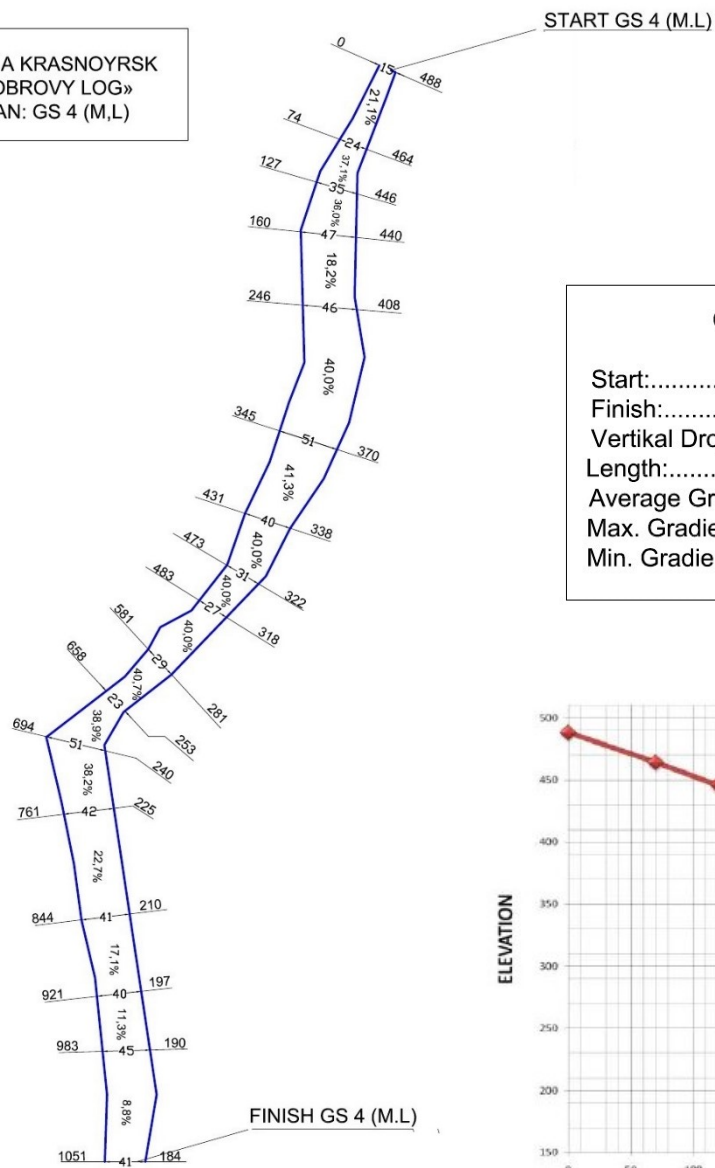
RUSSIA. BOBROVY LOG
SL (M,L)



8.3.3. GIANT SLALOM (GS)

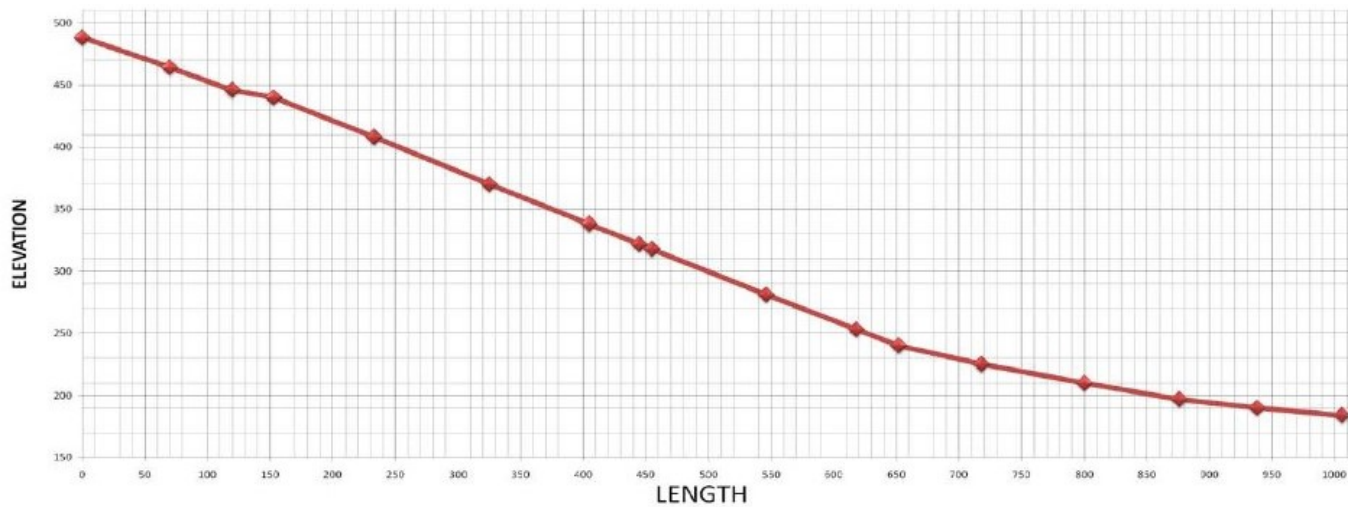


RUSSIA KRASNOYRSK
«BOBROVY LOG»
PLAN: GS 4 (M,L)

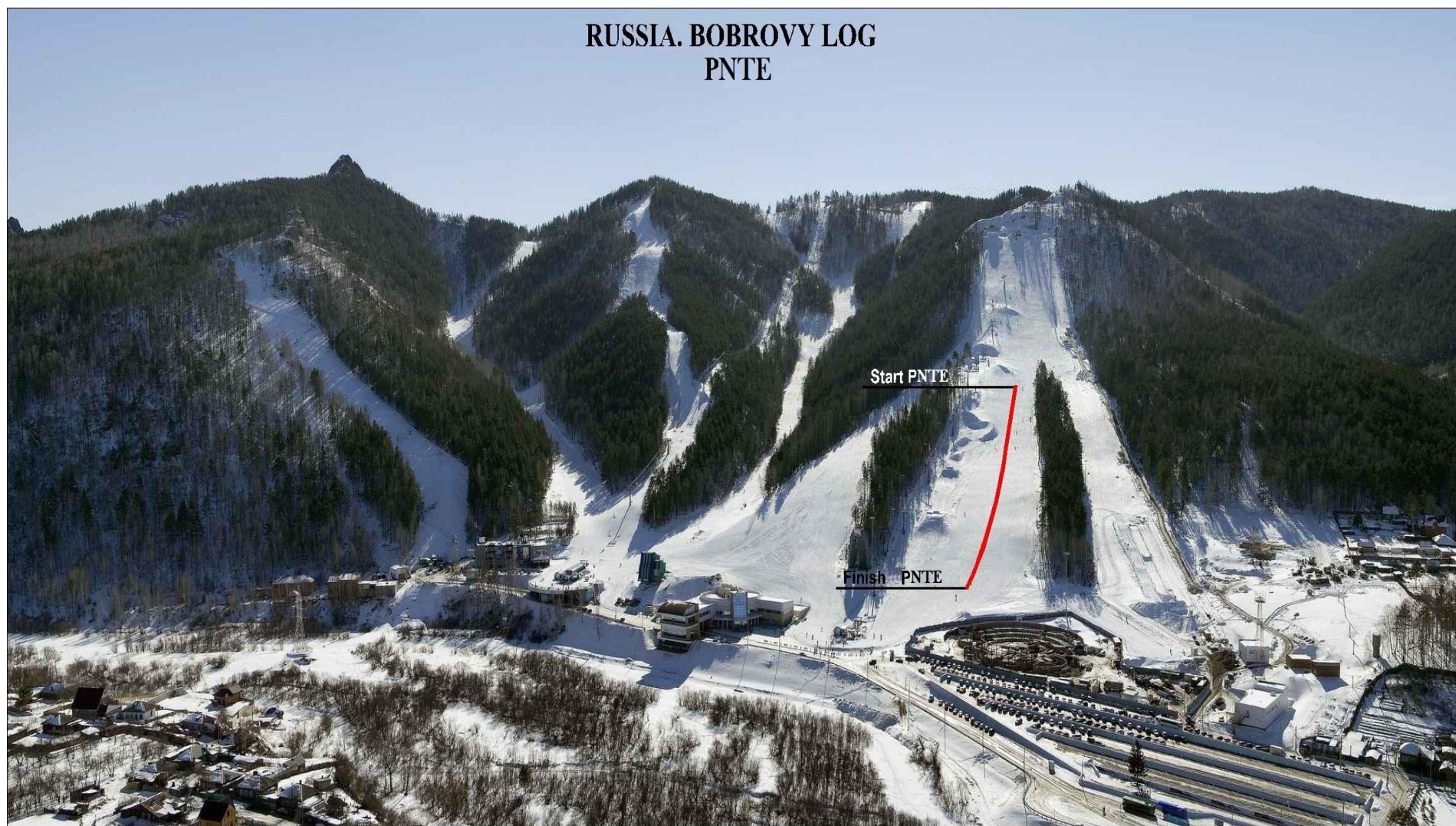


Course GS (M,L)

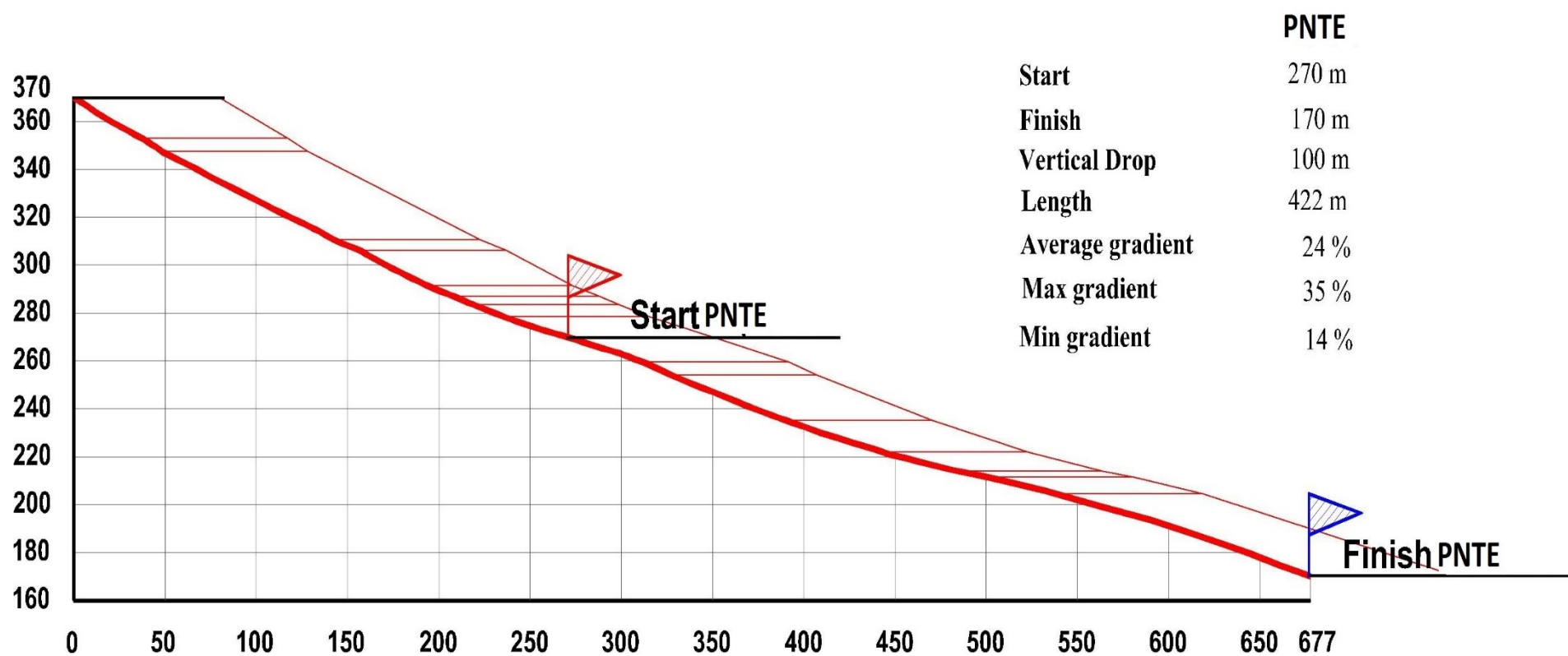
Start:.....488m
Finish:.....184m
Vertical Drop:.....304m
Length:.....1051m
Average Gradient:28.3%
Max. Gradient:.....41.3%
Min. Gradient:.....8.8%



8.3.4. PARALLEL NATIONS TEAM EVENT (PNTE)



RUSSIA. BOBROVY LOG PNTE



8.4. UNIVERSIADE VILLAGE MAP

1 Main Operations Centre
Главный операционный центр

INTERNATIONAL ZONE МЕЖДУНАРОДНАЯ ЗОНА

2 Main Accreditation Centre
1st floor Main Accreditation Centre / Bank / ATM / Meeting Rooms
2nd and 3rd floor Meeting Rooms / Interview Room
Главный аккредитационный центр
1й этаж: Главный аккредитационный центр / Банк / Банкомат / Помещения встреч делегаций
2й и 3й этаж: Помещения встреч делегаций / Помещения для интервью

3 Congress-hall
2nd floor Main Information Centre / Sports Information Centre /
Travel Agency / Ticket Office / Lost&Found / Universiade Museum
3rd floor HOD Meeting Hall
Конгресс-холл
2й этаж: Главный информационный центр / Спортивный информационный центр / Туристическое агентство /
Билетный офис / Бюро находок / Музей Универсиады
3й этаж: Зал встреч Глав делегаций

5 Medical Centre / Doping Control / Pharmacy
Медицинский центр / Допинг контроль / Аптека

RESIDENTIAL ZONE ЖИЛИЩНАЯ ЗОНА

4 Dining Hall
Столовая

6 Service-hall
1st floor Fitness Centre / Business Centre / Souvenir Shop/
Post Services / Barber Shop / Flowers Shop / Lounge Zone
2nd floor Fitness Centre / Meeting Rooms
3rd and 5th floor Meeting Rooms
4th and 6th floor Religious Centre
Сервис-холл
1й этаж: Фитнес-центр / Бизнес-центр / Сувенирный магазин /
Почтовые отделения / Салон красоты / Цветочный магазин / Лаунж-зона
2й этаж: Фитнес-центр / Помещения встреч делегаций
3й и 5й этаж: Помещения встреч делегаций
4й и 6й этаж: Центр религии

7 Accommodation for Delegations / Delegation Offices / Medical Rooms
Размещение делегаций / Офисы делегаций / Медицинские комнаты

7.1 Lounge Zone / Souvenir Shop
Лаунж-зона / Сувенирный магазин

7.2 Grocery Store / ATM / Dry Cleaning / Lounge Zone / Tailors Shop
Супермаркет / Банкомат / Химчистка / Лаунж-зона / Ателье

7.3 Grocery Store / Lounge Zone
Супермаркет / Лаунж-зона

7.4 Lounge Zone
Лаунж-зона

7.5 Lounge Zone
Лаунж-зона

8.1 Ethno-Village
Этно-деревня

8.2 Storage Rooms and Washing Area
Вещ-комбы и пункт хранения спортивного инвентаря

12 Flag Plaza / Delegation Welcome Ceremonies
Площадь церемоний приветствия

9.1 Vehicle Checkpoint (for staff)
Транспортный НПП (для персонала)

9.2 Security Checkpoint
Пешеходный НПП

9.3 Vehicle Checkpoint
Транспортный НПП

9.4 Vehicle Checkpoint
Транспортный НПП

9.5 Security Checkpoint
Пешеходный НПП

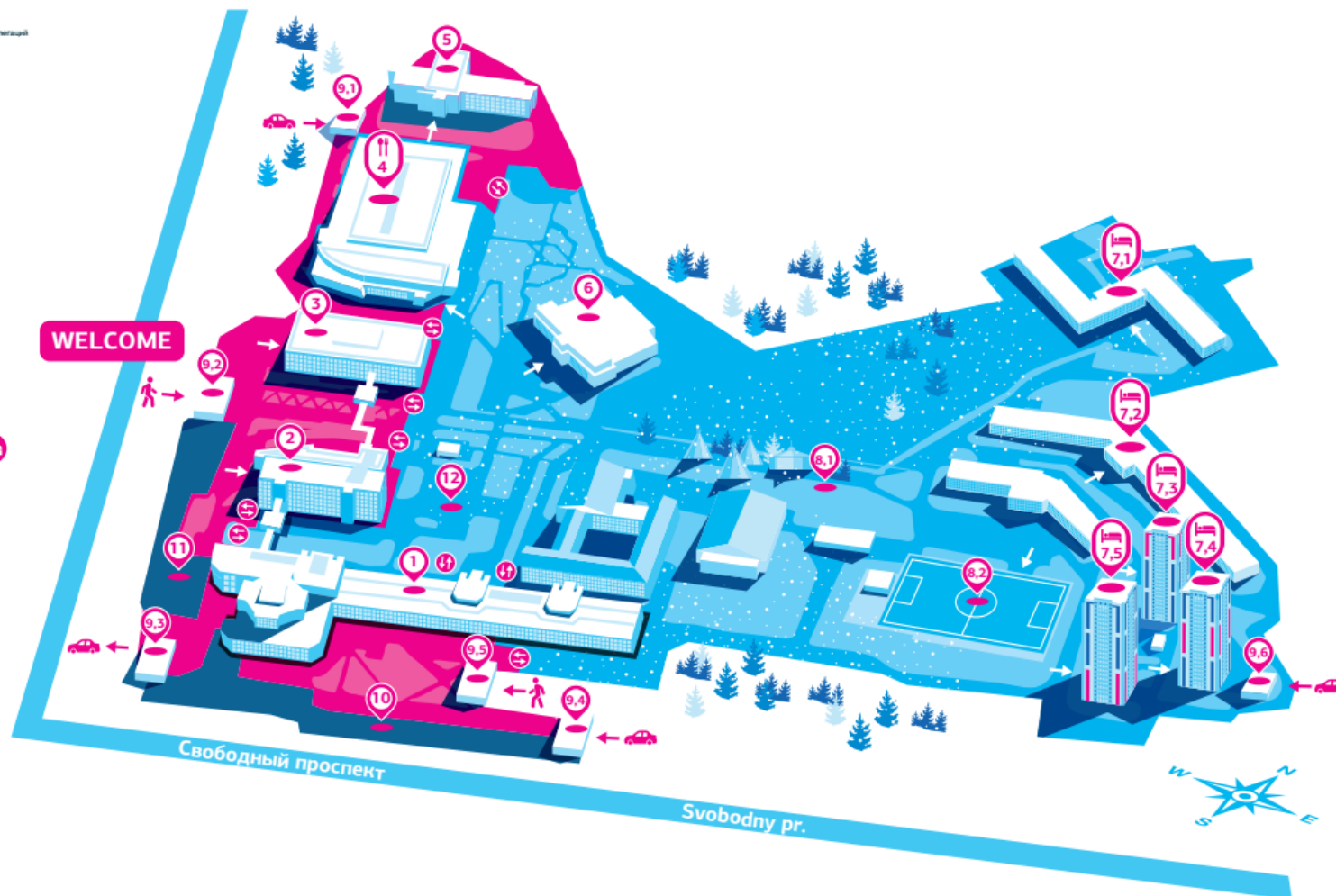
9.6 Vehicle Checkpoint (for staff)
Транспортный НПП (для персонала)

Accreditation Checkpoints
Внутренние НПП

TRANSPORTATION MALL ТРАНСПОРТНЫЙ МОЛЛ

10 Transportation Mall
Транспортный Молл

11 Parking for HOD
Парковка для глав делегаций



INTERNATIONAL ZONE
МЕЖДУНАРОДНАЯ ЗОНА

OPERATIONAL ZONE
ОПЕРАЦИОННАЯ ЗОНА

TRANSPORTATION MALL
ТРАНСПОРТНЫЙ МОЛЛ

RESIDENTIAL ZONE
ЖИЛИЩНАЯ ЗОНА

8.5. KRASNOYARSK CITY MAP

WINTER UNIVERSIADE 2019 ON THE MAP OF KRASNOYARSK

SPORTS VENUES

- 1 Sopka Cluster (Winter Sports Academy Sports and Training Complex)
 - ▶ Sopka Multifunctional Sports Complex
 - ▶ Snezhny Sports and Training Block
 - ▶ Halfpipe Park
 - ▶ Set of alpine skiing courses
 - ▶ Freestyle Administrative and Training Block
 - ▶ Set of freestyle skiing courses
 - ▶ Gorny Sports and Training Block

- 2 Raduga Cluster (Winter Sports Academy Sports and Training Complex)
 - ▶ Raduga Multifunctional Sports Complex
 - ▶ Lyzhny Sports and Training Block
 - ▶ Start Complex with the ski stadium, roller skiing tracks with lighting and snowmaking systems

- 3 Platinum Arena Ice Arena

- 4 Crystal Ice Arena

- 5 Funpark Bobrov Log All Season Sports and Entertainment Park
 - ▶ Set of alpine skiing courses with video broadcasting, artificial snowmaking and sports lighting systems
 - ▶ SPORT CLUB Sports and Training Block

- 6 Biathlon Academy Multifunctional Complex

- 7 Ivan Yarygin Sports Palace

- 8 Yenisei Ice Stadium

- 9 Arena Sever Multifunctional Complex

- 10 Rassvet Ice Palace

- 11 Pervomaisky Ice Arena

UNIVERSIADE VILLAGE

- 12 Athletic's Village

- 13 Village Volunteers Residence

MEDICAL VENUES

- 14 Helipads for ambulance aircrafts

- 15 Emergency Care

- 16 Hospital

UNIVERSIADE PARK

- 17 Mira Square

- 18 Tatyshev Island

MAIN PRESS CENTRE

- 19 Central Stadium

TRANSPORT INFRASTRUCTURE VENUES

- 20 Road intersection in Tikhie Zori Microdistrict

- 21 Automobile road along Volochaevskaya Str. from Dubrovinskogo Str. to Kopylova Str.

HIGHLIGHTS OF THE CITY

- 22 Paraskeva Pyatnitsa Chapel

- 23 Krasnoyarsk Region Philharmonic Hall

- 24 Clock Tower

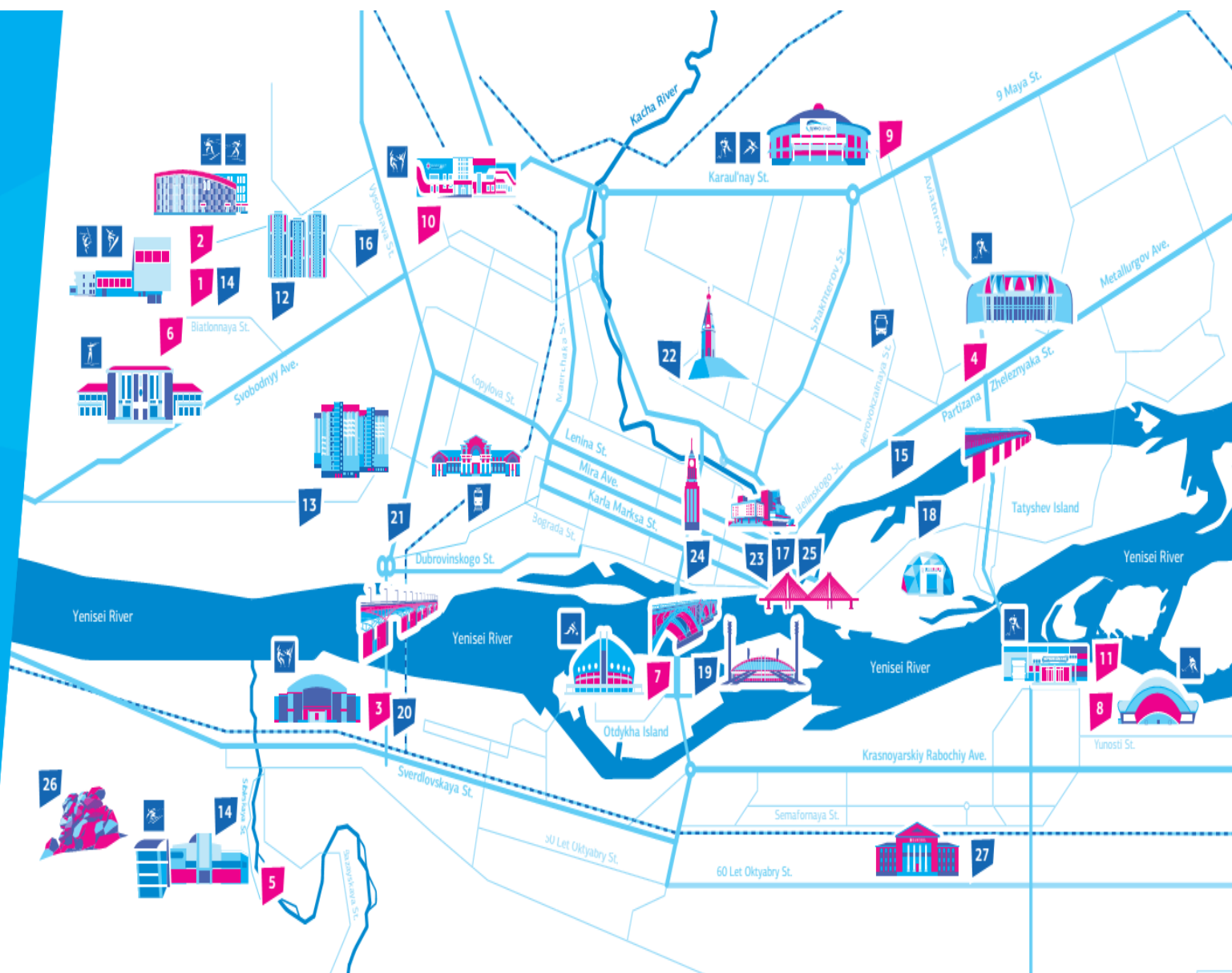
- 25 Vinogradovsky suspension bridge

- 26 Stolby Nature Reserve

- 27 Kamenka Cultural Space

- Intercity Bus Station

- Railway Station



8.6. TRAINING SESSIONS APPLICATION FORM

In order to organise training sessions effectively may we ask you to fill in the **Application form** and send it to t.ryzhkova@krsk2019.ru .

Please, choose the preferred time for training sessions (you can only choose one option per day), mark (✓) the events you are planning to practise, state the need of slalom poles and assistance of the Training Team.

Sample:

February, 27	✓ SL / GS
February, 28	SL / GS

Country	
Arrival Date	
Number of athletes	

	10:00-12:00	12:00-14:00	14:00-16:00	Need in Slalom poles	Training team assistance
February, 27	SL / GS	SL / GS	SL / GS	YES / NO	YES / NO
February, 28	SL / GS	SL / GS	SL / GS	YES / NO	YES / NO
March, 01	SL / GS	SL / GS	SL / GS	YES / NO	YES / NO
March, 02	SL / GS	SL / GS	----	YES / NO	YES / NO

FOUNDERS



GENERAL PARTNER



OFFICIAL SPONSORS

