



KRASNOYARSK 2019
29TH WINTER UNIVERSIADE



TECHNICAL HANDBOOK CROSS-COUNTRY SKIING



FEBRUARY 2019

WU 2019 TECHNICAL HANDBOOK TABLE OF CONTENTS

WU 2019 TECHNICAL HANDBOOK TABLE OF CONTENTS.....	2
1. WELCOME MESSAGES.....	3
2. ABBREVIATIONS	5
3. FISU INTERNATIONAL TECHNICAL COMMITTEE FOR THE WINTER UNIVERSIADE (CTI – UH)	6
4. GENERAL INFORMATION	7
4.1. 29TH WINTER UNIVERSIADE KRASNOYARSK 2019	7
4.2. 29TH WINTER UNIVERSIADE KRASNOYARSK 2019 COMPETITION SCHEDULE	7
4.3. OPENING AND CLOSING CEREMONIES	7
5. COMPETITION INFORMATION.....	8
5.1. TECHNICAL COMMITTEE	8
5.2. CROSS-COUNTRY SKIING STRUCTURAL CHART	9
5.3. TECHNICAL REGULATIONS	10
5.4. COMPETITION FORMAT	11
5.5. COMPETITION AND TRAINING VENUE INFORMATION.....	12
5.6. DAY BY DAY SCHEDULE	14
5.7. EQUIPMENT	17
5.8. DOPING CONTROL.....	17
5.9. AWARDS AND MEDALS	19
5.10. PRESS INTERVIEWS.....	20
5.11. SPORT INFORMATION SERVICES	21
6. SERVICE INFORMATION	22
6.1. RADIO FREQUENCY CONTROL	22
6.2. ACCREDITATION	22
6.3. STORAGE AND WAX ROOMS.....	22
6.4. TRANSPORTATION.....	23
6.5. FOOD AND BEVERAGES	24
6.6. MEDICAL SERVICES	25
7. OC CONTACTS	26
8. APPENDICES.....	27
8.1. 29TH WINTER UNIVERSIADE 2019 KRASNOYARSK COMPETITION SCHEDULE	27
8.2. VENUE LAYOUTS	28
8.3. PROFILE OF THE COURSES	30
8.4. UNIVERSIADE VILLAGE MAP.....	43
8.5. KRASNOYARSK CITY MAP	44

1. WELCOME MESSAGES



Dear Friends,

On behalf of FISU I am delighted to welcome you to the 29th Winter Universiade which will be held on 2-12 March 2019 in Krasnoyarsk, Russia!

This technical handbook has been created to provide you with comprehensive information on your participation in the Winter Universiade. The handbook reflects an immense amount of work that FISU's Technical Committee Chairs together with the competition managers of the Organising Committee and the International Sports Federations have done to allow world's most successful student athletes to compete in the best possible environment.

The Winter Universiade is set to become a landmark event for the whole Siberia. The investments in infrastructure and sport facilities have been incredible. The organisers have been working really hard to train staff and volunteers. Our most profound appreciation goes to all those who worked day and night to offer high standards of services to all participants.

Now, the time has finally come to celebrate winter university sports in Siberia! We look forward to welcome you in Krasnoyarsk and we are sure that you will find in this manual all the necessary information that will help you to participate in the competitions in a smooth and proper manner.

Together with the entire FISU Family, I wish you all the best for a very successful Winter Universiade in Krasnoyarsk!

A handwritten signature in black ink, appearing to read 'Matytsin'.

Oleg Matytsin
FISU President



Dear Friends,

One of the most awaited and large-scale events, the Winter Universiade 2019, is going to be held in Krasnoyarsk from March 2 to 12.

The forthcoming Games will make a lasting impression on the participants' lives. More than 3,000 athletes from all over the globe will compete for 76 sets of medals in 11 sports. Thousands of people of different professions, nationalities, confessions, and cultures will be united for several days by the same world. It is the world of sport, health, unlimited opportunities, and success. Not only the victories of the best athletes and the tears of those who did not succeed will be the Universiade result, it will also leave colourful feelings of the welcoming country, beautiful city, warm-hearted Siberians. Touching memories, strong friendship and faith in creative power of sport will stay in hearts of people for years.

Over the last 5 years, working together with the International University Sports Federation, we have made complicated but interesting project a reality. It is to prepare a colourful and memorable sports event. Thousands of people including athletes, spectators, and viewers all over the world live in the breathtaking waiting, anticipating this great feast of friendship, strength and creation.

The attached technical handbook is about one of the 11 sports included into the programme of the Winter Universiade 2019. In the technical handbook one can find all the required information regarding disciplines and rules, the sports programme and main services for athletes and official delegation members. Likewise, you can familiarize yourself with the competition venue.

On behalf of the Organising Committee, I thank you for your interest in the forthcoming Games! We are looking forward to meeting you during the 29th Winter Universiade Krasnoyarsk 2019!

**Maxim Urazov,
Director General
ANO "Directorate Krasnoyarsk 2019"**

A handwritten signature in dark ink, appearing to be 'M. Urazov'.

2. ABBREVIATIONS

Abbreviation	Name in full
ADAMS	Anti-Doping Administration and Management System
CCS	Cross-Country Skiing
CCSFR	Cross-Country Ski Federation of Russia
CIC	FISU International Control Committee
CMI	FISU International Medical Committee
CT	FISU Technical Committee
CTI-UH	FISU International Technical Committee for Winter Universiade
EC	FISU Executive Committee
FIS	International Ski Federation
FISU	International University Sports Federation
GTM	General Technical Meeting
HOD	Head of Delegation
ICR	FIS International Competition Rules
ISF	International Sports Federation
ITO	International Technical Official
NADO	National Anti-Doping Organisation
NOC	National Olympic Committee
NSF	National Sports Federation
NTO	National Technical Official
NUSF	National University Sports Federation
OC	Organising Committee
RADO	Regional Anti-Doping Organisation
SIC	Sport information Centre
SID	Sport Information Desk
TD	Technical Delegate
TCC	Technical Committee Chair
TO	Technical Official
TUE	Therapeutic Use Exemptions
UV	Universiade Village
WADA	World Anti-Doping Agency
WU	Winter Universiade

3. FISU INTERNATIONAL TECHNICAL COMMITTEE FOR THE WINTER UNIVERSIADE (CTI – UH)

Position	First Name	Last Name	Country
FISU CTI-UH Chair	Roger	ROTH	SUI
FISU CTI-UH Vice Chair	Robert	PHILIP	CAN
FISU TCC Alpine Skiing	Matjaz	KRANJC	SLO
FISU TCC Biathlon	Karl-Heinz	WOLF	GER
FISU TCC Cross-Country Skiing	Zofia Stefania	KIELPINSKA	POL
FISU TCC Curling	Jeanette	JOHNSTON	GBR
FISU TCC Figure Skating	Marie	LUNDMARK	FIN
FISU TCC Freestyle Skiing	Magnus	FERRY	SWE
FISU TCC Snowboard	Ola	SUNDEKVIST	SWE
FISU TCC Ice Hockey	Reto	BERTOLOTTI	SUI
FISU TCC Ice Hockey	Jarmo	JALARVO	FIN
FISU TCC Short Track	Nam Hwan	PARK	KOR
FISU TCC Ski Orienteering	Valentin	GARKOV	BUL
FISU TCC Bandy	Tor Audun	SOERENSEN	NOR

4. GENERAL INFORMATION

4.1. 29TH WINTER UNIVERSIADE KRASNOYARSK 2019

Date:	2 – 12 March 2019
Location:	Krasnoyarsk, Russia
Sports Programme:	11 Sports (8 Compulsory, 3 Optional) with 76 events
Venues:	10 Competition venues, 1 Training venue

4.2. 29TH WINTER UNIVERSIADE KRASNOYARSK 2019 COMPETITION SCHEDULE

Please refer to Appendix 8.1.

4.3. OPENING AND CLOSING CEREMONIES

4.3.1. OPENING CEREMONY

Date:	2 March 2019
Location:	Platinum Arena Ice Arena
The beginning of the Ceremony:	20:19
Duration:	3 hours
March pass of the athletes:	20:30 – 21:20

4.3.2. CLOSING CEREMONY

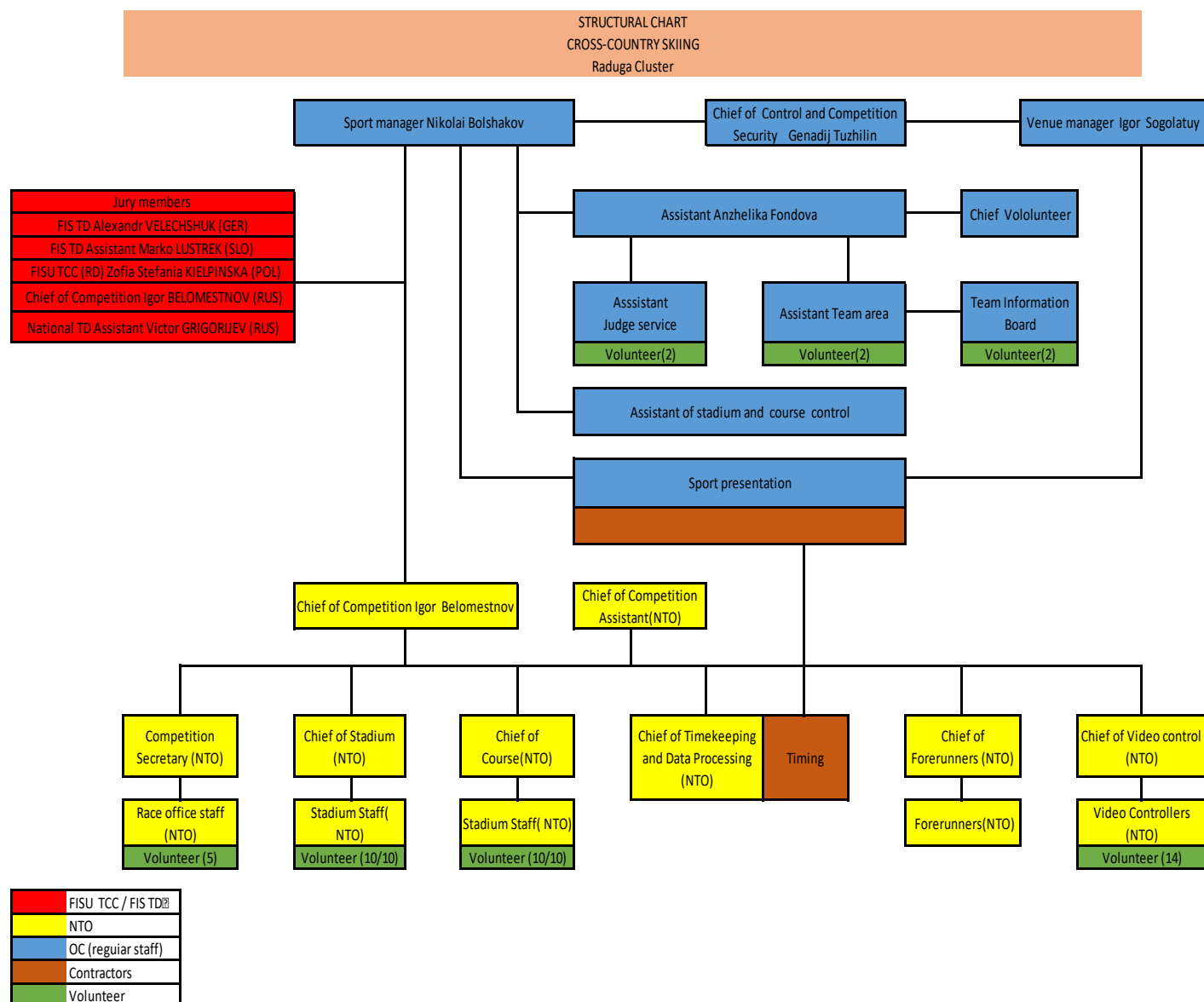
Date:	12 March 2019
Location:	Platinum Arena Ice Arena
The beginning of the Ceremony:	20:00
Duration:	2 hours 30 minutes

5. COMPETITION INFORMATION

5.1. TECHNICAL COMMITTEE

Technical Committee Chair	Zofia Stefania KIELPINSKA (POL)
FIS Technical Delegate	Alexandr VELECHSHUK (GER)
FIS Technical Delegate Assistant	Marko LUSTREK (SLO)
NSF Technical Delegate	Victor GRIGORIEV (RUS)
Competition Manager	Nikolay BOLSHAKOV (RUS)
Chief of Competition	Igor BELOMESTNOV (RUS)

5.2. CROSS-COUNTRY SKIING STRUCTURAL CHART



5.3. TECHNICAL REGULATIONS

The Cross-Country Skiing events will be organised in accordance with the most recent technical regulations of the International Ski Federation (FIS), except when specifically amended with the WU2019 Regulations or by the CTI-UH. In any dispute, the English text will be regarded as authoritative.

The programme includes the following events:

Men	Women
Sprint (F)	Sprint (F)
10km Individual (C)	5km Individual (C)
10km Pursuit (F)	5km Pursuit (F)
30km Mass Start (F)	15 km Mass Start (F)
Relay 4 x 7.5km (CCFF)	Relay 3 x 5km (CFF)
Mixed Team Sprint: 1 M + 1 W (C) – (Max 2 teams per country)	

Each country may enter:

Men:

Eight (8) competitors, of whom only six (6) may take part in the individual events and four (4) in the relay.

Women:

Eight (8) competitors, of whom only six (6) may take part in the individual events and three (3) in the relay.

Mixed team sprint competition:

Each country may enter a maximum of two (2) teams. Each team consists of 2 athletes (one (1) man - one (1) woman), who alternately ski 3 rounds each.

At the first General Technical Meeting, the Head of Delegation or his/her representative shall confirm and sign the official entry list of competitors.

Only competitors with an active FIS code are allowed to participate in each cross-country skiing event. Entries are controlled by the Organiser and the FIS Technical Delegate. Only accredited athletes can be considered for the draw of a starting list.

5.3.1. MEMBERS OF THE JURY

The Jury composition is provided for in the FIS ICR cross-country skiing rules, Art. 303.1.4.

For the Winter Universiade the jury will consist of the following:

- The TD, who is chair of the Jury (appointed by FIS)
- The Assistant TD (appointed by FIS)
- Race Director (appointed by FISU)
- The Chief of Competition
- The National TD Assistant (appointed by the host NSA in cooperation with the regional TD coordinator)

5.3.2. PROTEST AND APPEAL

Any protest of a sport or disciplinary nature must be submitted in writing to the Jury or other competent authority according to the regulations laid down by the FIS. Such protest must be accompanied by a deposit, the amount of which is set in line with the FIS regulations. According to FIS ICR 361.4.3, CHF 100 or the equivalent in another valid currency must be deposited with the submittal of the protest. This deposit will be returned if the protest is upheld.

Each Head of Delegation or his/her deputy is authorized to lodge an appeal against the decision of the Jury. This appeal must be submitted in writing to the Jury of Appeal or competent authority in accordance with the FIS regulations.

Any decision of the Jury of Appeal or equivalent authority of a sport is final and must be reported immediately to the Head of Delegation of the country concerned.

Any sport disciplinary situation, which cannot be satisfactorily resolved by the sports technical committees and the sport-specific disciplinary regulations, will be reported to the FISU Disciplinary Committee for further action to be taken. Where appropriate, a report will also be sent to FIS.

5.4. COMPETITION FORMAT

5.4.1. SPRINT (F)

Individual sprint competitions begin with a qualification round, organised as an Interval Start competition. After the qualification, qualified athletes compete in the sprint finals using elimination rounds (sprint heats).

- Qualification,
- Heats (6 starters),
- Quarter final (6 starters),
- Semifinal (6 starters),
- Final A (6 starters)
- Heats will be timed during Sprint competitions

5.4.2. INDIVIDUAL (C) (10 KM – MEN, 5 KM – WOMEN)

Individual race with 30 seconds start intervals. Each competitor starts at his/her designated starting time and final result is determined by difference between finish time and start time.

5.4.3. PURSUIT (F) (10 KM – MEN, 5 KM – WOMEN)

Pursuit competitions are carried out as combined competitions where starting times of athletes are determined by result(s) of previous competition(s) and the final result is determined by finish arrival order of the last competition.

5.4.4. MASS START (F) (30 KM – MEN, 15 KM – WOMEN)

At the mass start all competitors start at the same time. Athletes with the best ranking have the most favourable places at the start of results determined by arrival order at the finish line.

5.4.5.RELAY (C+F) (3X5KM W (C+FF) / 4X7,5KM M (CC+FF))

In Relay teams with four athletes for men, three for women compete with each other. Men relay consist of four steps, in which first and second steps run with classic style, third and fourth – with free style. Women relay consist of three steps, in which first steps run with classic style, second and third – with free style.

Relay starts with the mass start, whereas the best places at the start are given by draw or to the teams that have taken higher places on previous same competitions. Relay is passed by palm touch with any part of the body of the starting athlete of its team, while both of the athletes are at the zone of relay pass. The order in which athletes finish at the last stage of the relay, will define their places in final relay results protocol.

5.4.6. MIXED TEAM SPRINT (C)

1 M + 1 W – (Max 2 teams per nation) - Each athlete skies alternatively 3 rounds 2 x 3 x 1,5 km.

5.5. COMPETITION AND TRAINING VENUE INFORMATION

5.5.1. GENERAL INFORMATION

OC Venue Manager		Igor SOGOLATUJ	
Venue	Function	Location	Distance to UV
Raduga Cluster	Training / Competition	Krasnoyarsk 56.008523, 92.723930	8 km / 20 min

5.5.2.VENUE LAYOUTS

Please refer to the Appendix 8.2.

5.5.3.COURSES TECHNICAL DATA

Length of course)	Course category	Height Difference	Maximum Climb	Total Climb	Lowest point	Highest point
1,3 km	D	22m	15m	27m	364m	386m
						
Length of course	Course category	Height Difference	Maximum Climb	Total Climb	Lowest point	Highest point
1,5 km	D	22m	15m	36m	364m	386m
						

5.6. DAY BY DAY SCHEDULE

Training
Competition
Reserve Day
Technical Meeting / Draw
Flower Ceremony
Medal Awarding Ceremony

Date	Day	Start Time	Finish Time	Event Name	Venue
1 March	FRI	10:00	13:00	Unofficial Training	Raduga Cluster
		13:00	14:00	Team Information Meeting (GTM)	Raduga Cluster
2 March	SAT	10:00	13:00	Official Training Individual (C) W/M	Raduga Cluster
		13:00	14:00	Team Captains Meeting Individual (C)	Raduga Cluster
3 March	SUN	8:00	9:55	Official Training Individual (C) W	Raduga Cluster
		10:00	10:45	Individual 5km (C) W	Raduga Cluster
		end of comp.		Flower Ceremony Individual 5km (C) W	Raduga Cluster
		11:00	11:15	Medal Awarding Ceremony Individual 5km (C) W	Raduga Cluster
		10:45	11:25	Official Training Individual (C) M	Raduga Cluster
		11:30	12:45	Individual 10km (C) M	Raduga Cluster
		end of comp.		Flower Ceremony Individual 10km (C) M	Raduga Cluster
		13:00	13:15	Medal Awarding Ceremony Individual 10km (C) M	Raduga Cluster
		14:00	15:30	Official Training Pursuit (F) W/M	Raduga Cluster
		15:30	16:30	Team Captains Meeting Pursuit (F)	Raduga Cluster
4 March	MON	8:00	9:55	Official Training Pursuit (F) W	Raduga Cluster
		10:00	10:45	Pursuit 5km (F) W	Raduga Cluster
		end of comp.		Flower Ceremony Pursuit 5km (F) W	Raduga Cluster
		11:00	11:15	Medal Awarding Ceremony Pursuit 5km (F) W	Raduga Cluster
		10:45	11:25	Official Training Pursuit (F) M	Raduga Cluster
		11:30	13:00	Pursuit 10km (F) M	Raduga Cluster
		end of comp.		Flower Ceremony Pursuit 10km (F) M	Raduga Cluster
5 March	TUE	13:15	13:30	Medal Awarding Ceremony Pursuit 10km (F) M	Raduga Cluster
		10:00	13:00	Official Training Sprint (F)	Raduga Cluster
6 March	WED	13:00	14:00	Team Captains Meeting Sprint (F)	Raduga Cluster
		8:00	9:55	Official Training Sprint (F) W/M	Raduga Cluster
		10:00	11:00	Qualifications Sprint (F) W/M	Raduga Cluster
		11:00	12:15	Official Training Sprint (F) W/M	Raduga Cluster
		12:30	14:00	Finals Sprint (F) W/M	Raduga Cluster
		end of comp.		Flower Ceremony Sprint W&M	Raduga Cluster
		14:15	14:30	Medal Awarding Ceremony Sprint W&M	Raduga Cluster

7 March	THU	10:00	13:00	Official Training Mixed Team Sprint (C)	Raduga Cluster
		13:00	14:00	Team Captains Meeting Mixed Team Sprint (C)	Raduga Cluster
8 March	FRI	8:00	9:55	Official Training Mixed Team Sprint (C)	Raduga Cluster
		10:00	11:00	Semi-Finals Mixed Team Sprint (C)	Raduga Cluster
		11:00	11:55	Official Training Mixed Team Sprint (C)	Raduga Cluster
		12:00	12:30	Final Mixed Team Sprint (C)	Raduga Cluster
		end of comp.		Flower Ceremony Mixed Team Sprint	Raduga Cluster
		12:45	13:00	Medal Awarding Ceremony MTS	Raduga Cluster
		16:00	18:00	Official Training Relay W/M	Raduga Cluster
		18:00	19:00	Team Captains Meeting Relays	Raduga Cluster
9 March	SAT	8:00	9:55	Official Training Relay 3x5km (C+FF) W	Raduga Cluster
		10:00	11:00	Relay 3x5km (C+FF) W	Raduga Cluster
		end of comp.		Flower Ceremony Relay 3x5km (C+FF) W	Raduga Cluster
		11:15	11:30	Medal Awarding Ceremony Relay 3x5km (C+FF) W	Raduga Cluster
		11:00	11:55	Official Training Relay 4x7,5km (CC+FF) M	Raduga Cluster
		12:00	14:00	Relay 4x7,5km (CC+FF) M	Raduga Cluster
		end of comp.		Flower Ceremony Relay 4x7,5km (CC+FF) M	Raduga Cluster
		14:00	16:00	Unofficial Training	Raduga Cluster
10 March	SUN	14:15	14:30	Medal Awarding Ceremony Relay 4x7.5km (CC+FF) M	Raduga Cluster
		10:00	11:30	Official Training Mass Start (F) W	Raduga Cluster
		11:30	12:30	Team Captains Meeting Mass Start (F) W/M	Raduga Cluster
11 March	MON	14:00	16:00	Unofficial Training M	Raduga Cluster
		9:30	11:25	Official Training Mass Start (F) W	Raduga Cluster
		11:30	13:00	Mass Start 15km (F) W	Raduga Cluster
		end of comp.		Flower Ceremony Mass Start W	Raduga Cluster
		13:15	13:30	Medal Awarding Ceremony Mass Start W	Raduga Cluster
12 March	TUE	13:00	15:00	Official Training Mass Start (F) M	Raduga Cluster
		9:30	11:25	Official Training Mass Start (F) M	Raduga Cluster
		11:30	13:30	Mass Start 30km (F) M	Raduga Cluster
		end of comp.		Flower Ceremony Mass Start M	Raduga Cluster
		13:45	14:00	Medal Awarding Ceremony Mass Start M	Raduga Cluster

Ceremonies:

Flower Ceremonies will be held immediately after the finish of the competition. Medal Awarding Ceremonies will be held approximately 15 min. after the end of the competitions. Medal Awarding times in the day by day schedule are subject to changes based on the finish time of the competition. For more information please refer to the chapter 5.9.

Trainings:

Training possibilities in Raduga Cluster - skiing starts on the 24 February 2019.

General Technical Meeting

The GTM – General Technical Meeting (Team Information Meeting) will be held on the 1 March at 13:00 in the office №431 on the 4th floor of the MSC “RADUGA” at the Raduga Cluster.

At the first General Technical Meeting, the Head of Delegation or his/her representative shall confirm and sign the official entry list of competitors.

Only competitors with an active FIS code are allowed to participate in each cross-country skiing event. Entries are controlled by the Organiser and the FIS Technical Delegate. Only accredited athletes can be considered for the draw of a starting list.

5.6.1. UNOFFICIAL TRAINING

Date	Day	Time	Event	Venue
24.02.2019	SUN	10:00 – 13:00 15:00 – 18:00	Unofficial Training	Raduga Cluster
25.02.2019	MON	10:00 – 13:00 15:00 – 18:00	Unofficial Training	Raduga Cluster
26.02.2019	TUE	10:00 – 13:00 15:00 – 18:00	Unofficial Training	Raduga Cluster
27.02.2019	WED	10:00 – 13:00 15:00 – 18:00	Unofficial Training	Raduga Cluster
28.02.2019	THU	10:00 – 13:00 15:00 – 18:00	Unofficial Training	Raduga Cluster
01.03.2019	FRI	10:00 – 13:00	Unofficial Training	Raduga Cluster
09.03.2019	SAT	14:00 – 16:00	Unofficial Training	Raduga Cluster
10.03.2019	SUN	14:00 – 16:00	Unofficial Training	Raduga Cluster

5.6.2. TEAM CAPTAINS MEETING AND ENTRIES DEADLINE

The participation of the athletes in each event must be confirmed the day before the concerned competition - the deadline is 2 hours before the concerned TCM.

Date	Day	Time	Meeting	Venue
02.03.2019	SAT	13:00 – 14:00	Team Captains Meeting Individual (C)	Raduga Cluster
03.03.2019	SUN	15:30 – 16:30	Team Captains Meeting Pursuit (F)	Raduga Cluster
05.03.2019	TUE	13:00 – 14:00	Team Captains Meeting Sprint (F)	Raduga Cluster

07.03.2019	THU	13:00 – 14:00	Team Captains Meeting Mixed Team Sprint (C)	Raduga Cluster
08.03.2019	FRI	18:00 – 19:00	Team Captains Meeting Relays	Raduga Cluster
10.03.2019	SUN	11:30 – 12:30	Team Captains Meeting Mass Start (F)	Raduga Cluster

5.7. EQUIPMENT

Clothing and equipment control will in principle follow FIS rules. The equipment control will be carried out in respect of the recent technical FIS regulations if no additional FISU rule is determined. Each competitor is responsible for the equipment that he/she uses (skis, bindings, poles, ski boots, suit, etc). The term competition equipment encompasses all items of equipment which the competitor uses in competition. This includes clothing as well as apparatus with technical functions. The entire competition equipment forms a functional unit. All equipment used by Athletes is governed by the FIS Specifications for Competition Equipment.

https://res.cloudinary.com/fis-production/image/upload/v1541758799/fis-prod/Specifications_for_CC_JP_NC_SB_FS_FK_Competiton_Equipment.pdf

5.8. DOPING CONTROL

5.8.1. DOPING CONTROL

Doping Control will be carried out in accordance with the WADA World Anti-Doping Code and FISU regulations. Conditions for doping control procedures will be provided during the competitions at all sports venues.

5.8.2. LIST OF PROHIBITED SUBSTANCES

The actual list of prohibited substances and methods is defined in accordance with WADA international standards. National University Sports Federations will be responsible for ensuring that their delegations, namely athletes, are made aware of the actual copy of The Prohibited List. Ignorance of the Prohibited List contents will in no way constitute a valid excuse for any participant of the Winter Universiade violating valid anti-doping rules. For the WADA list of prohibited substances and methods, please refer to the following website: www.wada-ama.org.

5.8.3. TESTING

The required number of samples will be selected during the competition and non-competition periods in accordance with the Test Distribution Plan developed by the Organising Committee under the supervision of the FISU CMI. During the Universiade, athletes can be tested at any time without prior notice. The testing will be conducted by Doping Control Officers (DCO) from an anti-doping organization accredited by WADA. Testing will be conducted under the supervision of the FISU Medical Committee. Doping samples will be sent to the WADA-accredited anti-doping laboratory. All results will be sent to the Chairman of the FISU Medical Committee and entered into the ADAMS system. In case of violation of Anti-Doping Rules, the responsibility for processing the results lies with the FISU Medical Committee. In case of setting a national record, doping testing of the athlete is carried out at the expense of his National University Sports Federation.

5.8.4. DOPING CONTROL STATIONS

Ten doping control stations are located at sports venues. The 11th doping control station is located in the Medical Centre of Universiade Village. All doping control stations will be marked with signs and the way to them will be shown by the signage. After the completion of the doping control procedure, all samples collected at each doping control station will be delivered to the central doping control station together with the necessary support documentation (doping control protocols) for further registration in the ADAMS system. All samples will be packaged and sent to the WADA accredited anti-doping laboratory in accordance with the international standards. All the information concerning the doping control programme during the Winter Universiade is confidential according to WADA and FISU requirements. When visiting a doping control station athletes are required to have accreditation cards.

Doping Control Station for cross-country skiing athletes will be allocated at the 1st floor of Start Complex in Raduga Cluster.

5.8.5.THERAPEUTIC USE EXEMPTIONS (TUE)

Universiade participants who require Therapeutic Use Exemption (TUE) must make an appropriate request to the National Anti-Doping Organization or International Sports Federation before participation in the Universiade. The World Anti-Doping Agency International Standard for TUE will be applied in this case. Every athlete who uses a substance or a method included in the List of prohibited substances is obliged to be in possession of a completed TUE form of the established standard from the moment of arriving until the departure from the Universiade Village after the Closing Ceremony of the Universiade.

If there is a need in the use of a prohibited substance or a prohibited method for medical reasons after the opening of the Winter Universiade, an athlete must submit a request for TUE to the FISU TUE Committee as a matter of urgency. The responsibility for completing the TUE form and submitting an application to the FISU TUE Committee lies with the delegation physician. If the delegation does not have its own physician the athlete shall submit a request for TUE with the attachment of medical documentation confirming the fact of providing him/her with emergency medical treatment to the FISU TUE Committee.

5.8.6. CONTACT DETAILS

Head of the Anti-Doping division

Maksim VEREVKIN
Tel.: +7 923 377 2019
Email: m.verevkin@krsk2019.ru

5.9. AWARDS AND MEDALS

5.9.1. FLOWER CEREMONY

Flower Ceremonies will take place after the end of each race in the immediate vicinity of the finish zone.

5.9.2. MEDAL AWARDING CEREMONY

The Medal Awarding Ceremonies will be held at the venue at the end of the competition accordingly to the detailed schedule by sport (approximately 15 min. after the end of the competitions). For the day by day schedule please refer to the chapter 5.6.

The official languages for the Medal Awarding Ceremonies will be Russian and English.

The medallists of each event must attend the Medal Awarding Ceremony.

In case a medallist is unable to attend, the medal and bouquet are delivered to an official of the relevant delegation, which shall wear the uniform of the delegation to take part in the ceremony. The official must not mount the podium but walk in front of it and take the medal and bouquets in his/her hands.

In case all the winners cannot be present, the ceremony is postponed.

During the Medal Awarding Ceremony:

- The athletes are not allowed to take any national flag or any other national, cultural or religious symbol on the podium;
- The national flags of the first three (3) medallists will be raised and the only anthem played will be the FISU anthem, the Gaudeamus Igitur;
- During the playing of the FISU anthem and the raising of the flags, they shall face the flags and conduct themselves in a dignified manner at all times. No national anthem is played during the ceremony;
- Athletes are expected to take off their caps when receiving the medal and keep it in hand throughout the ceremony (i.e. playing of the FISU anthem and raising of the flags);
- Athletes, authorities and accompanying persons are required to face the flags while they are being raised and the FISU anthem is being played.
- The athletes must wear their delegation's approved uniform or the uniform with which they competed if the ceremony takes place right after the end of the competition and at the same venue.
- After the medals are awarded athletes must remain in the awarding area for photo shooting on the podium with medals.
- In order to take the best photo during the shooting athletes should follow the recommendations of photographers.
- After the Medal Awarding Ceremony and the official shooting on the podium the medallists/coaches are invited to the press conference. Athletes must bring their medals to the press conference.

5.9.3. DIPLOMA OF HONOURS

The athletes ranked one (1) to eight (8) will receive a Diploma of Honours. For team events, each team member will receive a personal diploma of honour mentioning his/her name and the team ranking. Diplomas of honours are not distributed to winners at the Medal Awarding ceremony. They are handed to the Head of Delegation or an appointed representative of each delegation in the Universiade Village at a later time. If an athlete or team is disqualified, the diploma(s) shall be returned to FISU.

5.10. PRESS INTERVIEWS

Venue Press Centres for media representatives are organised at all Winter Universiade 2019 competition sites.

At the end of a competition, all athletes must leave the field of play through the mixed zone where brief interviews will be held. Every athlete/coach should be ready to communicate with media representatives upon their request. In case of cold weather, team representatives should give an athlete a warm jacket or a blanket prior to entering the mixed zone.

After the Award Ceremony, all competition medallists and/or their coaches will be invited to participate in the post-competition press conference. A volunteer from the Venue Press Centre will invite and then accompany athletes/coaches to the press conference room. Athletes must bring their medals to the press conference.

Simultaneous interpretation in English and Russian will be provided during the press conference. If a press conference participant does not speak either of these languages, they should invite their team interpreter to the press conference.

To accommodate individual interviews, special rooms in the Main Press Centre and Universiade Village will be provided. Accredited journalists and delegation attachés may use these rooms only after making an interview arrangement with an athlete or a coach.

5.11. SPORT INFORMATION SERVICES

5.11.1. ON-LINE SPORT INFORMATION SERVICES

Internet address:	https://krsk2019.ru/
-------------------	---

5.11.2. SPORT INFORMATION CENTRE (SIC) AT THE UV

The Sport Information Centre is located on the second floor of the Congress hall SFU in the International Zone at the Universiade Village and provides the following information/services to delegations during the Krasnoyarsk 2019 Winter Universiade:

- Distribution of Technical Handbooks
- Competition schedule
- Training schedule
- Technical meeting information
- Distribution of daily sport results

The Sport Information Centre will operate between 07:00 to 23:00 from 23 February to 14 March 2019.

5.11.3. SPORTS INFORMATION AT THE VENUE

A Sport Information Desk (SID) will be located at each venue, will distribute most recent information related to the competitions to the SID and receive requests from the team representative(s).

The Sport Information Desk will operate from 24 February to 12 March 2019 in accordance with the competitions and training schedules (2 hours before and after the events).

5.11.4. SPORTS INFORMATION DISTRIBUTION

Information	Online	Venue	UV SIC	ITO Hotel
Competition Schedule	+	+	+	+
Start list / Result list	+	+	+	+
Change to Schedules	+	+	+	+
Special announcements and urgent notice		+	+	+
Weather Information	+	+	+	+
Medal table	+			
Technical Handbook	+		+	+
Regulations for the WU2019	+			
Non sport information (transport, catering, etc)		+	+ (MIC)	+
Answer and follow up to teams questions		+	+	+

6. SERVICE INFORMATION

6.1. RADIO FREQUENCY CONTROL

6.1.1. GENERAL INFORMATION

At the sport venues of the Winter Universiade Krasnoyarsk 2019 for all participants there will be restrictions applied to the use of radio electronic high frequency devices (hereinafter, REDs), namely: radio stations, Wi-Fi access points, radio microphones and other wireless equipment.

All the users of REDs have to get a permission to use radio equipment. Before using REDs, one has to have it tested and marked with special labels.

Information on the location of the testing and marking points and the full procedure of getting a permit to use of REDs is available at the Winter Universiade Krasnoyarsk 2019 official website: <https://krsk2019.ru/en/pages/radio equip.>

At the venue entrance, all non-marked radio electronic devices will be placed into special lockers and will be returned to the owners upon exiting the venue.

6.1.2. CONTACT DETAILS

Head of Radio Frequency Planning and Control Division	Timofey SUKHANOV Email: t.sukhanov@krsk2019.ru
Head of Communication Organisation Department	Irina LUCHKO Email: i.luchko@krsk2019.ru

6.2. ACCREDITATION

Location of the Main Accreditation Centre:

The Main Accreditation Centre is located in the International Zone of the Universiade Village.

IMPORTANT: No athlete will be allowed to attend official training or competition without the Accreditation Card. Temporary cards do not allow athletes to take part to official trainings and competitions.

6.3. STORAGE AND WAX ROOMS

Raduga Cluster will be used to cover teams' needs on sport equipment storage, waxing cabins, changing rooms and relaxing zones. All facilities are built and organised according to all international requirements. In total 35 wax cabins will be available for cross-country skiing athletes with separate entrances and exits will be allocated on the 1st floor of the Lyzhny Sports and Training block and near the building. On the 2nd floor of Lyzhny there will be 30 athletes changing rooms.

Location and access: Team officials have to pick up the keys at the Lyzhny Sports and Training block by signing a declaration and paying a 100 Euro deposit, which will be refundable upon check-out.

The waxing rooms are equipped with special tables and equipment for preparing skis (waxing irons and stands, ski clamps), lighting, several electric outlets, adequate heating and ventilation, shelves, chair, holders for skis, waste bins.

Changing rooms will be equipped with benches, several electric outlets, lighting, adequate heating and ventilation, clothes rack and waste bins.

6.4. TRANSPORTATION

6.4.1. TRANSPORTATION SYSTEM FOR ATHLETES AND TEAM OFFICIALS (TA)

The transportation system for athletes and official delegation members will provide transport services from 23 February to 14 March 2019.

Routes in the transportation system for athletes and official delegation members are marked with the abbreviation "TA" (Transport Athletes). Vehicles are being equipped with placards indicating route number for the individual, team sports and spectating athletes.



Example of a bus / minibus placard

6.4.2. TRANSPORTATION SCHEDULE FOR CROSS-COUNTRY SKIING

Transportation of athletes in individual sports to the competition and training venues from the Universiade Village and back is organised on regular routes by shuttle buses system within 15-60 min interval. Buses will be available at the Transportation Mall of the Universiade Village.

Route number	Sport	Route	Distance to UV	Time
TA 005	Cross-Country Skiing	Universiade Village - Raduga Cluster	8km	20 min

Detailed timetable will be available in WU2019 Transportation Guide.

6.4.3. TRANSPORTATION SERVICES FOR SPECTATING ATHLETES AND OFFICIALS (TS)

Special shuttle buses which run between the Universiade Village and the competition venues are provided for the spectating athletes from 1 to 12 March 2019.

Transport for spectating athletes will operate in accordance with the competition schedule. All athletes, regardless of their delegation and sport, will have access to the bus transportation systems for spectating athletes.

Following routes will be used for spectating athlete transportation services:

Route number	Route	Sport
TS 001	UV - Sopka Cluster - Biathlon Academy - UV	Snowboard / Freestyle Skiing / Biathlon
TS 002	UV - Raduga Cluster - UV	Cross-Country Skiing / Ski Orienteering
TS 003	UV - Ivan Yarygin Sports Palace - UV	Curling
TS 004	UV - Arena Sever - UV	Short Track Speed Skating / Ice Hockey W*
TS 005	UV - Crystal Ice Arena - UV	Ice Hockey M
TS 006	UV - Pervomaisky Ice Arena / Yenisei Ice Stadium - UV	Bandy / Ice Hockey W*
TS 007	UV - Platinum Arena Ice Arena - UV	Figure Skating / Synchronized Skating
TS 008	UV - Funpark Bobrov Log - UV	Alpine Skiing

* Pervomaisky Ice Arena will host Ice Hockey W competitions from 1 to 8 March 2019, the spectating athletes route is TS 006. On 10 & 11 March 2019 the route will be changed to TS 004 as the competitions will be held at Arena Sever.

Detailed timetable will be available in WU2019 Transportation Guide.

6.5. FOOD AND BEVERAGES

6.5.1. UV MAIN DINING HALL

Main Dining Hall offers catering services based on a daily nutrition (breakfast, lunch, dinner, late dinner). Opening hours of the Main Dining Hall from 5:00 to 1:00, during Universiade Village opening period from 23 February till 14 March 2019.

6.5.2. F&B SERVICES AT THE COMPETITIONS VENUES

At the competition venues, refrigerators with bottled water at room temperature, soft drinks and isotonic, dispensers for hot drinks, a buffet table with fruits, muesli, bars, nuts and dried fruits will be provided in athletes lounges/changing rooms.

At the Raduga Cluster, hot meals will be provided only for servicemen.

6.6. MEDICAL SERVICES

6.6.1. GENERAL INFORMATION

The Organising Committee will provide all accredited persons with free emergency medical care (diagnosis/treatment and local transportation) of all injuries and illnesses directly and indirectly related to the concerned FISU Event. This obligation will begin from the day of the opening of the Universiade Village until two (2) days following the closing ceremony (23 February – 14 March 2019).

For the secondary or non-emergency treatment, participants must have their own appropriate insurance.

6.6.2. MEDICAL CENTRE AT THE UNIVERSIADE VILLAGE

In the Universiade Village a medical centre for provision of primary health care and specialized medical care will operate from 8 to 22 hours daily, providing emergency care 24 hours a day. To provide an emergency medical care and medical evacuation to the dedicated hospitals on the territory of the medical centre, the ambulance cars of B and C classes are provided with a general and specialized ambulance teams.

Universiade Village Medical Centre will provide medical services to accredited client groups from 23 February to 14 March 2019.

Medicines prescribed by the physician of the medical centre in a single dose on the day of appeal will be provided free of charge at the pharmacy 24 hours a day, 7 days a week. Orthopaedic appliances (canes, crutches) and wheelchairs for the displacement of injured patients, if required, will be given for temporary use. On the territory of the Universiade Village it is planned to place automatic electronic defibrillators within their strategic accessibility.

Full information will be available in WU2019 Medical Guide.

6.6.3. MEDICAL SERVICES FOR ATHLETES AT THE SPORTS VENUES

Medical Aid Station

At the sports venues of the Winter Universiade 2019 an athlete medical station (AMS) is provided. AMS provides emergency and specialized medical aid to athletes. It has a doctor in sports medicine, a nurse, and a doctor-volunteer.

AMS working schedule: 1 hour before the start of the competition/official training and within 1 hour after the end of the competition/official training. Medical aid stations have all the required medical equipment, medicines and medical products to provide the set scope of medical aid.

Mobile medical teams

Mobile medical teams (MMT) for emergency medical aid at the field of play are formed in accordance with the International requirements for the sports held.

The team comprises: a sports medicine physician, rescuer on a snowmobile with the "Akya" type of rescue sleigh. MMTs are located in the finish zone. MMTs provide the required standard of equipment for emergency medical support.

Working schedule of MMT: 1 hour before the start of the competition/official training and within 1 hour after the competition/official training.

Ambulance cars

During the competition, all sports venues are provided with at least two ambulance cars of B and C classes with general and specialized teams. Ambulance teams are located in close proximity to the finish zone.

6.6.4. CONTACT DETAILS

Head of Medical Care Department	Maxim SUVOROV Tel: +7 923 549 2019 Email: m.suvorov@krsk2019.ru
Head of Medical Care Division	Elena MIKHAILENKO Tel: +7 933 329 2019 Email: e.mikhaylenko@krsk2019.ru

7. OC CONTACTS

ANO "Directorate Krasnoyarsk 2019"	19 Mira Av., build. 1, Krasnoyarsk 660049 007 (391) 291-8080 conference@krsk2019.ru
Delegation services	delegation.services@krsk2019.ru
Accreditation	acr02@krsk2019.ru
Department of Sports	sports@krsk2019.ru
Sports Entries	sport.entries@krsk2019.ru
Arrivals and departures / Transportation	a-d@krsk2019.ru

8.APPENDICES

8.1. 29TH WINTER UNIVERSIADE 2019 KRASNOYARSK COMPETITION SCHEDULE

Version: 01.02.2019 Subject to change

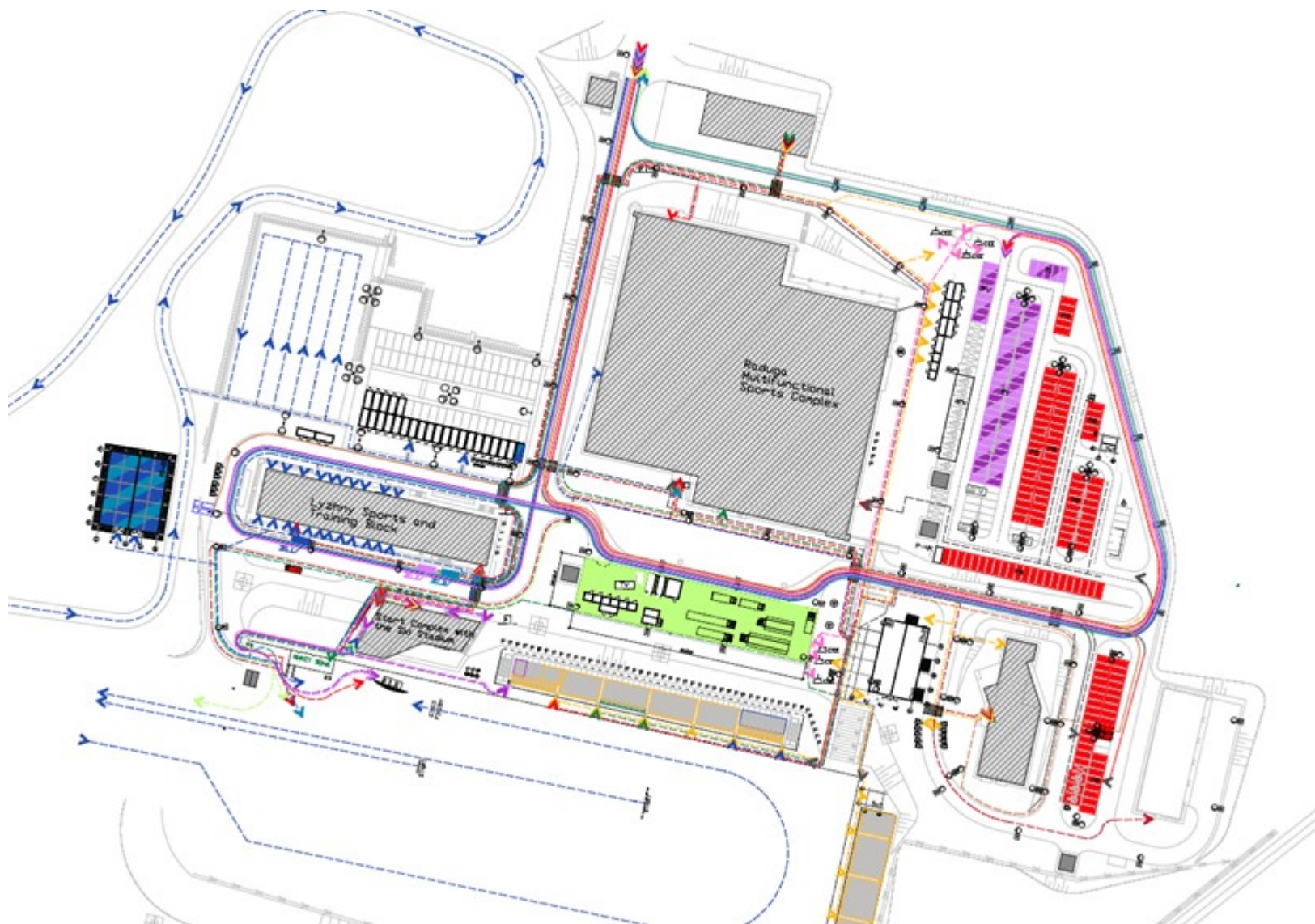


		FRI March 1	SAT March 2	SUN March 3	MON March 4	TUE March 5	WED March 6	THU March 7	FRI March 8	SAT March 9	SUN March 10	MON March 11	TUE March 12	#Events
	 CEREMONIES Platinum Arena FISU WORLD CONFERENCE Grand Hall Siberia		Platinum Arena 20:19 Opening Ceremony	Platinum Arena 14:00 «WU 2019» Show		Grand Hall Siberia FISU World Conference	Grand Hall Siberia FISU World Conference	Grand Hall Siberia FISU World Conference					Platinum Arena 20:00 Closing Ceremony	
SNOW SPORTS	 ALPINE SKIING Funpark Bobrov Log		10:00-12:00 Official Free Skiing on Super-G course	Super-G W/M 10:30 Super-G W 13:00 Super-G M	Alpine Combined W 10:00 AC - SG 13:30 AC - SL	Alpine Combined M 10:00 AC - SG 13:30 AC - SL	Reserve day	Giant Slalom W 10:00 1 st run 13:00 2 nd run	Giant Slalom M 10:00 1 st run 13:00 2 nd run	Parallel Nations Team Event 11:00	Slalom W 10:00 1 st run 13:00 2 nd run	Slalom M 10:00 1 st run 13:00 2 nd run	Reserve day	9
	 SNOWBOARD Sopka Cluster	Snowboard Cross 09:30-11:00 Official Training M 11:30-13:00 Official Training W	Snowboard Cross W/M 09:30-10:30 Official Training 11:00-13:00 Qualifications	Snowboard Cross W/M 09:30-10:10 Off. Training 10:30-12:30 Qualifications (Round Robin) 13:30-14:30 SF & Finals	Parallel Giant Slalom 09:00-11:00 Unofficial Training 13:30-15:30 Unofficial Training	Parallel Giant Slalom W/M 09:30-11:30 Qualifications 13:00-15:00 Finals	Parallel Slalom W/M 09:30-11:30 Qualifications 13:00-15:00 Finals Halfpipe 19:00-21:00 Off. Training	Reserve day Halfpipe 19:00-21:00 Off. Training	Slopestyle 11:30-13:30 Off. Training Halfpipe W/M 16:30-17:30 Off. Training 17:45-19:25 Qualifications 20:00-20:45 Off. Training 21:00-22:00 Finals	Slopestyle 11:30-13:30 Off. Training	Slopestyle W/M 09:00-09:45 Off. Training 10:00-12:00 Qualifications 14:00-15:00 Finals	Reserve day	10	
	 FREESTYLE SKIING Sopka Cluster	Aerials 16:30-19:00 Official Training	Aerials 12:30-15:00 Official Training	Aerials W/M 14:00-16:00 Off. Training 16:30-18:30 Qualifications 19:30-20:30 Finals	Slopestyle 11:00-13:30 Off. Training Mixed Team Aerials 16:00-17:30 Off. Training 18:00-19:00 Qualifications 19:30-20:30 Finals	Slopestyle 11:00-13:30 Official Training	Slopestyle W/M 09:30-10:30 Off. Training 11:00-14:00 Qualifications 15:30-16:30 Finals	Moguls 16:30-19:00 Official Training Reserve day	Moguls 16:30-19:00 Official Training	Ski Cross 09:00-13:00 Off. Training Moguls W/M 14:30-16:30 Off. Training 17:00-19:00 Qualifications 19:30-21:00 Finals	Ski Cross 09:00-13:00 Off. Training Dual Moguls W/M 15:00-16:30 Off. Training 17:00-18:45 Qualifications 19:30-20:30 Finals	Ski Cross W/M 09:00-10:00 Off. Training 10:30-11:30 Qualifications 11:40-12:55 Round Robin 13:30-14:30 SF & Finals	Reserve day	11
	 BIATHLON Biathlon Academy		Unofficial Training 10:00-12:00 W 13:00-15:00 M	Individual Official Training 10:00-12:00 W 13:00-15:00 M	Individual W/M 10:00-10:50 Zeroing W 11:00-12:45 IND 15km W 13:00-13:50 Zeroing M 14:00-15:45 IND 20km M	Sprint Official Training 10:00-12:00 W 13:00-15:00 M	Sprint W/M 10:00-10:50 Zeroing W 11:00-12:15 SP 7,5km W 13:00-13:50 Zeroing M 14:00-15:10 SP 10km M	Pursuit W/M 10:15-10:45 Zeroing W 11:00-11:50 PUR 10km W 13:15-13:45 Zeroing M 14:00-14:50 PUR 12,5km M	Unofficial Training 10:00-12:00 Single Mixed Relay 13:00-15:00 Official Training	Single Mixed Relay 6km W + 7,5km M 13:15-13:45 Zeroing 14:00-14:45 SMR	Mass Start W/M 10:15-10:45 Zeroing W 11:00-11:45 MS 12,5km W 12:15-12:45 Zeroing M 13:00-13:45 MS 15km M	Reserve day	9	
	 CROSS-COUNTRY SKIING Raduga Cluster	Unofficial Training 10:00-13:00	Individual (C) 10:00-13:00 Official Training W/M	Individual (C) W/M 08:00-09:55 Off. Training W 10:00-10:45 5km (C) W 10:45-11:25 Off. Training M 11:30-12:45 10km (C) M	Pursuit (F) W/M 08:00-09:55 Off. Training W 10:00-10:45 5km (F) W 10:45-11:25 Off. Training M 11:30-13:00 10km (F) M	Sprint (F) 10:00-13:00 Official Training W/M	Sprint (F) W/M 08:00-09:55 Off. Training W/M 10:00-11:00 Qualifications W/M 11:00-12:15 Off. Training W/M 12:30-14:00 Finals W/M	Mixed Team Sprint (C) 10:00-13:00 Official Training	Mixed Team Sprint (C) 08:00-09:55 Off. Training 10:00-11:00 Semi-Finals 11:00-11:55 Off. Training 12:00-12:30 Final	Relay W/M 08:00-09:55 Off. Training W 10:00-11:00 3x5km (C+FF) W 11:00-11:55 Off. Training M 12:00-14:00 4x7,5km (CC+FF) M	Mass Start (F) 10:00-11:30 Official Training W	Mass Start (F) 09:30-11:25 Official Training 11:30-13:00 15km (F) W Mass Start (F) 13:00-15:00 Official Training M	Mass Start (F) 09:30-11:25 Official Training 11:30-13:50 30km (F) M	11
 SKI ORIENTEERING Raduga Cluster		Unofficial Training 14:00-16:00	Sprint / Pursuit 15:30-17:30 Official Training M/W	Sprint M/W 15:00-16:30 M 16:45-17:30 W	Pursuit M/W 15:00-16:00 M 16:15-17:15 W	Sprint Relay 15:00-17:00 Official Training	Sprint Relay 16:00-17:30	Unofficial Training 13:00-15:00	Middle Distance 15:00-17:00 Official Training M/W	Middle Distance M/W 14:00-15:30 M 16:00-17:30 W	Reserve day	7		
ICE SPORTS	 CURLING Ivan Yarygin Sports Palace		08:15-15:15 Official Practice	09:00 w1 14:00 M1 19:00 w2	09:00 M2 14:00 w3 19:00 M3	09:00 w4 14:00 w6 19:00 w5	09:00 M5 14:00 w6 19:00 M6	09:00 w7 14:00 w7 19:00 w8	09:00 M8 14:00 w9 19:00 M9	09:00 Playoff Games M/w (3 v 6) / (4 v 5) 16:00 Semi Finals M/w	09:00 Medal Games M 14:00 Medal Games w		2	
	 ICE HOCKEY Men Crystal Ice Arena	09:00 LAT-SUI (1) 12:30 HUN-JPN (2) 16:00 CZE-USA (3) 19:30 SVK-RUS (4)	08:30 SUI-SWE (5) 11:45 CAN-GBR (6) 15:00 LAT-KAZ (7)	12:30 USA-HUN (8) 16:00 CZE-SVK (9) 19:30 RUS-JPN (10)	12:30 GBR-SUI (11) 16:00 CAN-LAT (12) 19:30 KAZ-SWE (13)	12:30 CZE-HUN (14) 16:00 SVK-JPN (15) 19:30 RUS-USA (16)	12:30 CAN-SUI (17) 16:00 LAT-SWE (18) 19:30 JPN-GBR (19)	12:30 USA-SVK (20) 16:00 HUN-RUS (21) 19:30 JPN-CZE (22)	09:00 SVK-HUN (23) 12:30 GBR-LAT (24) 16:00 SWE-CAN (25) 19:30 SUI-KAZ (26)	09:00 JPN-USA (27) 12:30 SWE-GBR (28) 16:00 KAZ-CAN (29) 19:30 RUS-CZE (30)		16:00 SF#1 (31) 19:30 SF#2 (32)	11:00 Bronze (33) 15:00 Gold (34)	1
	 ICE HOCKEY Women Pervomaisky Ice Arena Arena Sever	Pervomaisky 12:30 JPN-USA (1) 16:00 USA-SUI (2) 19:30 SUI-RUS (3)		Pervomaisky 12:30 CAN-JPN (4) 16:00 USA-SUI (5) 19:30 RUS-CHN (6)	Pervomaisky 12:30 CAN-USA (7) 16:00 SUI-CHN (8) 19:30 RUS-JPN (9)		Pervomaisky 12:30 CHN-JPN (10) 16:00 CAN-SUI (11) 19:30 USA-RUS (12)	Pervomaisky 12:30 JPN-SUI (13) 16:00 USA-CHN (14) 19:30 RUS-CAN (15)		Arena Sever 16:00 SF#1 (16) 19:30 SF#2 (17)	Arena Sever 16:00 Bronze (18) 19:30 Gold (19)		1	
	 SHORT TRACK Arena Sever		Unofficial Training 09:00-15:00	Official Training 09:00-20:00	14:00 1500m W/M Followed by Heats 3000m Relay W Heats 5000m Relay M	14:00 500m W/M Followed by SF 3000m Relay W SF 5000m Relay M	14:00 1000m W/M Followed by F 3000m Relay W F 5000m Relay M						8	
	 FIGURE SKATING Platinum Arena Rassvet Ice Palace (practice ice rink)			Rassvet Ice Palace Unofficial Practice	Rassvet Ice Palace Unofficial Practice	Official Practice	Pairs 14:30 Short Program Men 17:00 Short Program	Ice Dance 13:00 Rhythm Dance Pairs 16:00 Free Skating Men 19:00 Free Skating	Syn. Skating 13:00 Short Program Ladies 14:00 Short Program Ice Dance 19:30 Free Dance	Syn. Skating 10:45 Free Skating Ladies 12:00 Free Skating Exhibition 19:00 EXH			5	
	 BANDY Women Yenisei Ice Stadium	11:00 SWE-USA (1) 14:00 RUS-NOR (2)		10:00 NOR-USA (3) 13:00 RUS-SWE (4)	13:00 SWE-NOR (5)	13:00 USA-RUS (6)	10:00 SF#1 (7) 13:00 SF#2 (8)		15:00 Bronze (9) 19:00 Gold (10)					1
	 BANDY Men Yenisei Ice Stadium	17:00 SWE-NOR (1) 20:00 RUS-KAZ (2)	11:00 FIN-SWE (3) 14:00 RUS-BLR (4)	16:00 BLR-NOR (5) 19:00 FIN-KAZ (6)	16:00 SWE-KAZ (7) 19:00 NOR-RUS (8)	16:00 KAZ-NOR (9) 19:00 BLR-FIN (10)	16:00 SWE-BLR (11) 19:00 FIN-RUS (12)	16:00 NOR-FIN (13) 19:00 KAZ-BLR (14)	12:00 RUS-SWE (15)	11:00 5-6 place (16) 15:00 SF#1 (17) 19:00 SF#2 (18)	15:00 Bronze (19) 19:00 Gold (20)			1
Awarding Ceremonies				8	10	7	12	6	6	8	12	5	2	76

All Medal Awarding Ceremonies will take place at the venue at the end of the competition accordingly to the detailed schedule by sport.

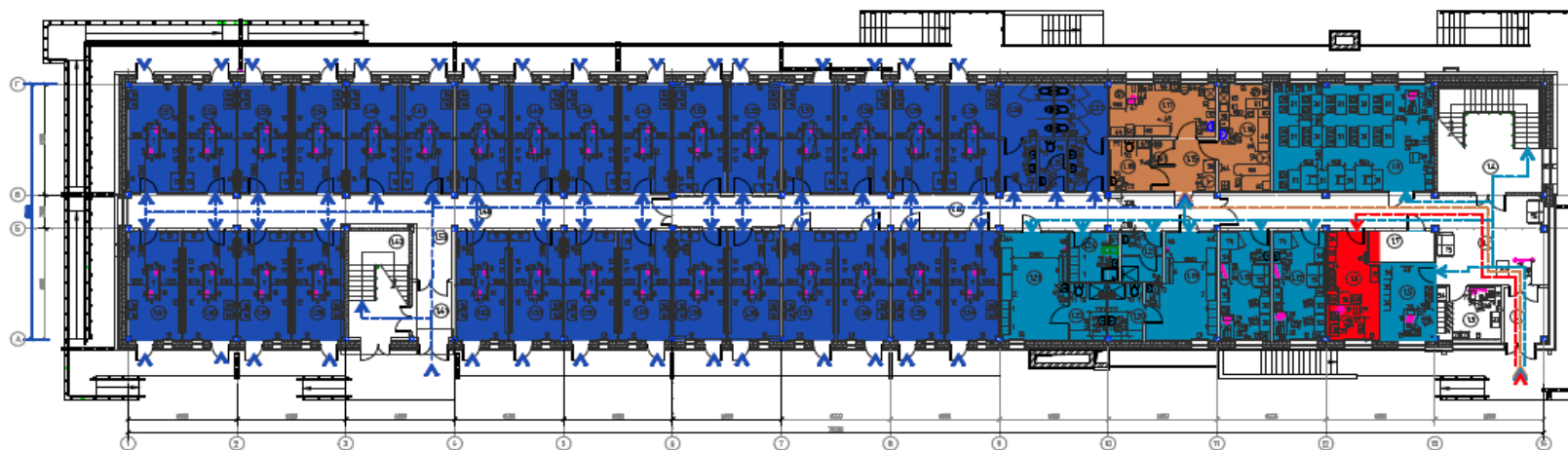
8.2. VENUE LAYOUTS

8.2.1. RADUGA CLUSTER GENERAL LAYOUT

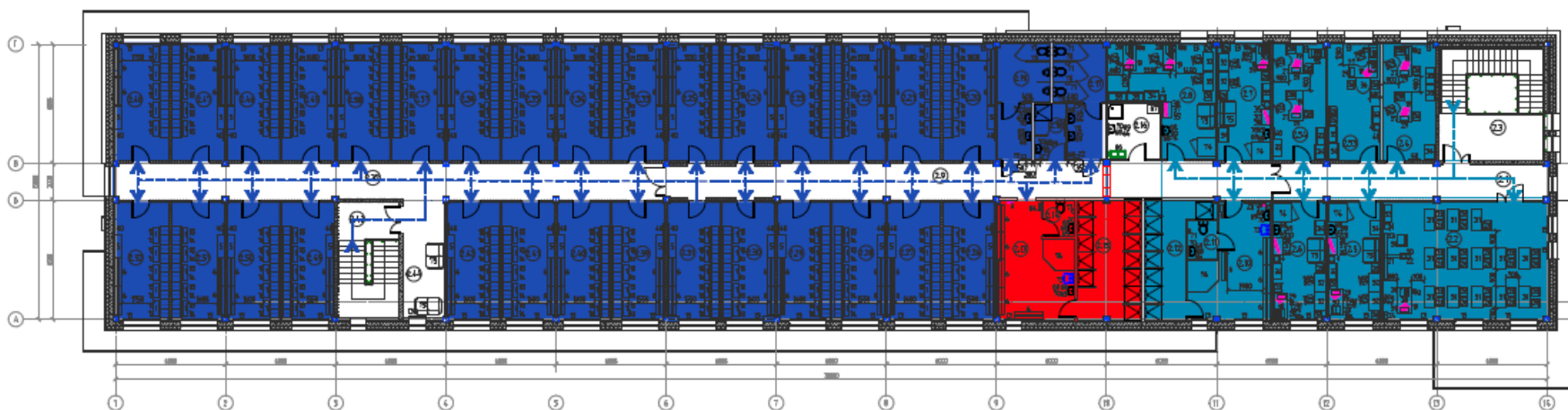


8.2.2.LYZHNY SPORTS AND TRAINING BLOCK

Lyzhny Sports and Training Block. Floor 1



Lyzhny Sports and Training Block. Floor 2



8.2.3.PROFILE OF THE COURSES

8.2.4. SPRINT (F)

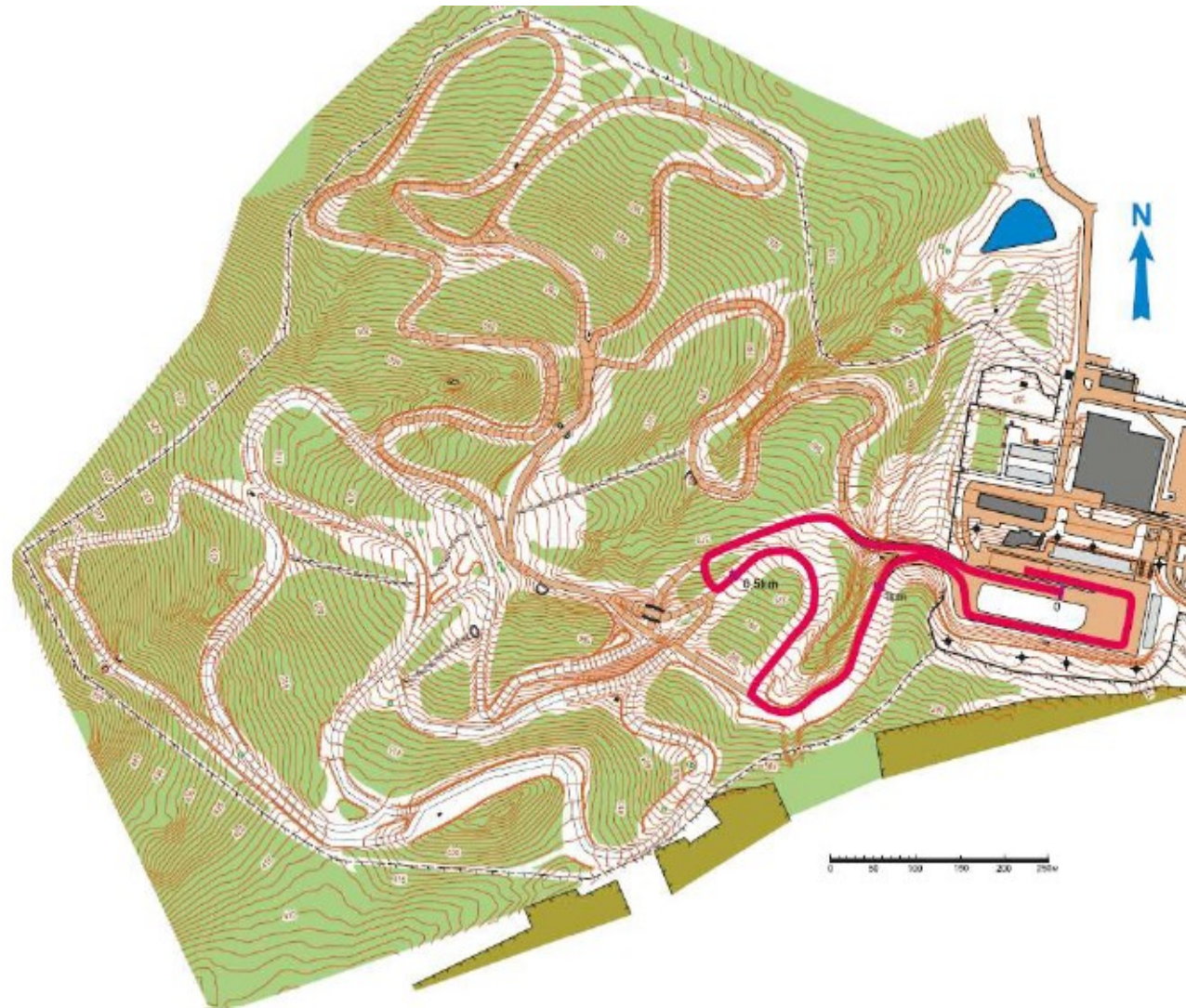
Ladies' Sprint Free

1.3 km Sprint



Men's Sprint Free

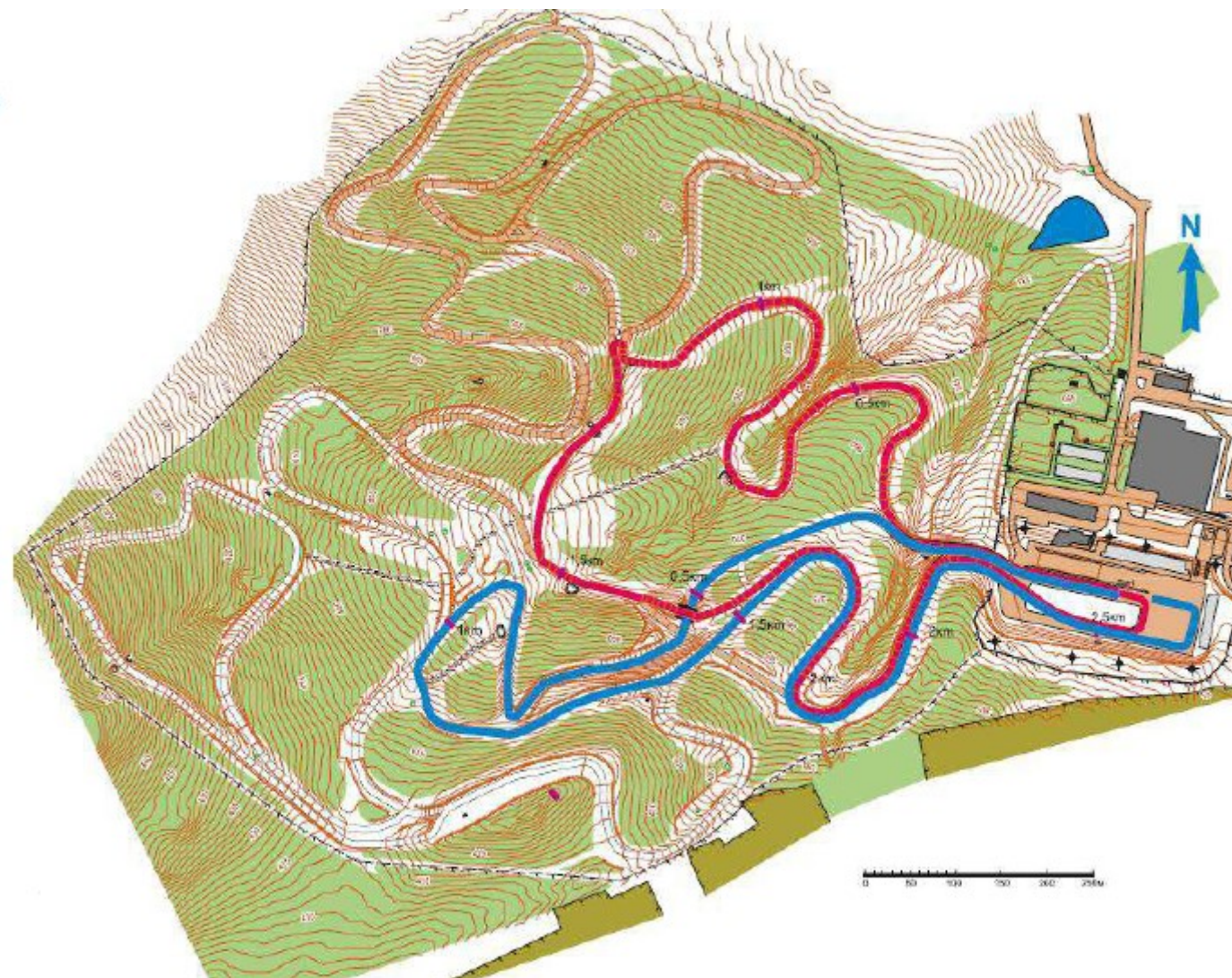
1.5 km Sprint



8.2.5.INDIVIDUAL (C) (10 KM – MEN, 5 KM – WOMEN)

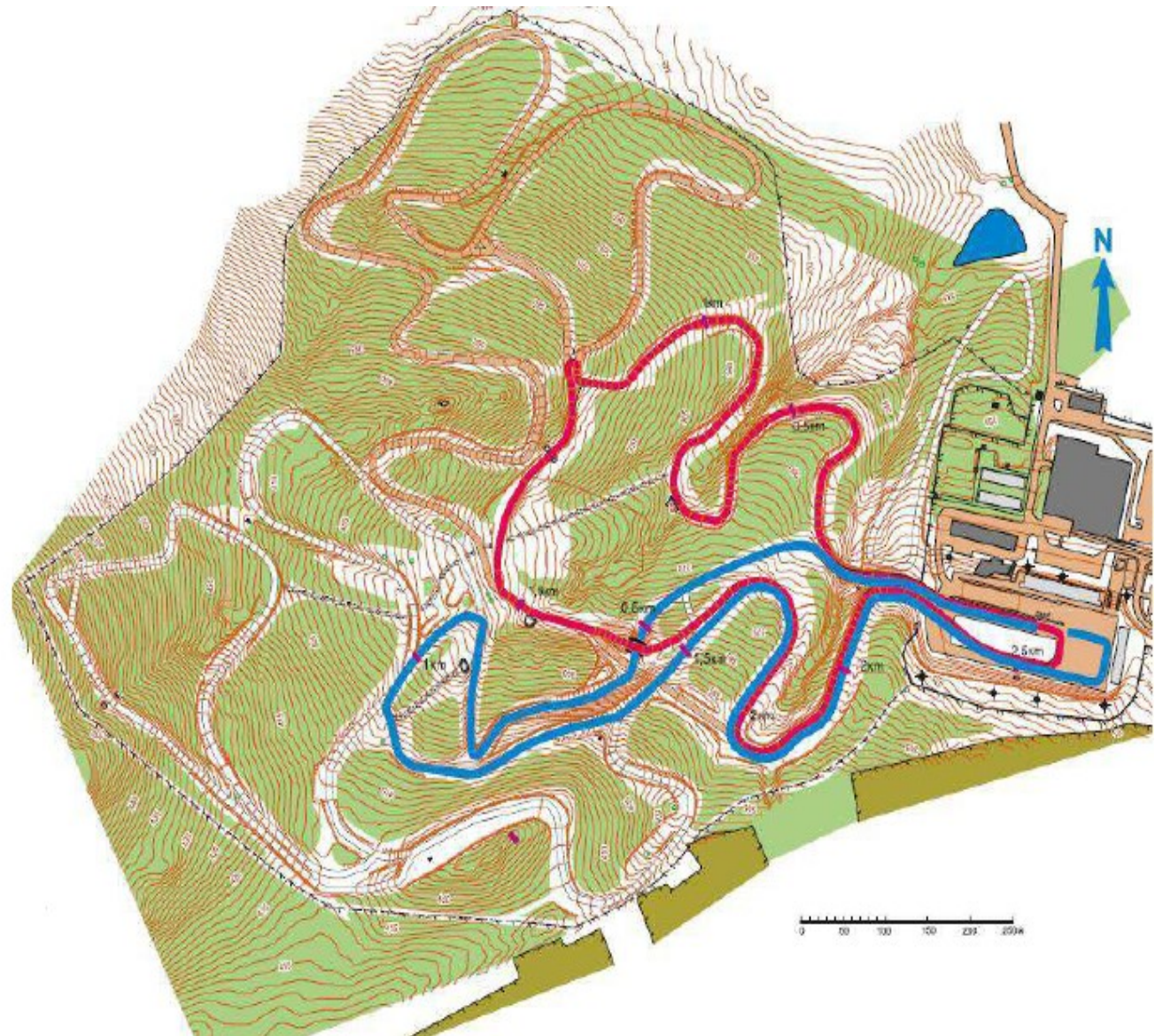
Men's 10 km Classic

2.5 km Red + 2.5 km Blue



Ladies' 5 km Classic

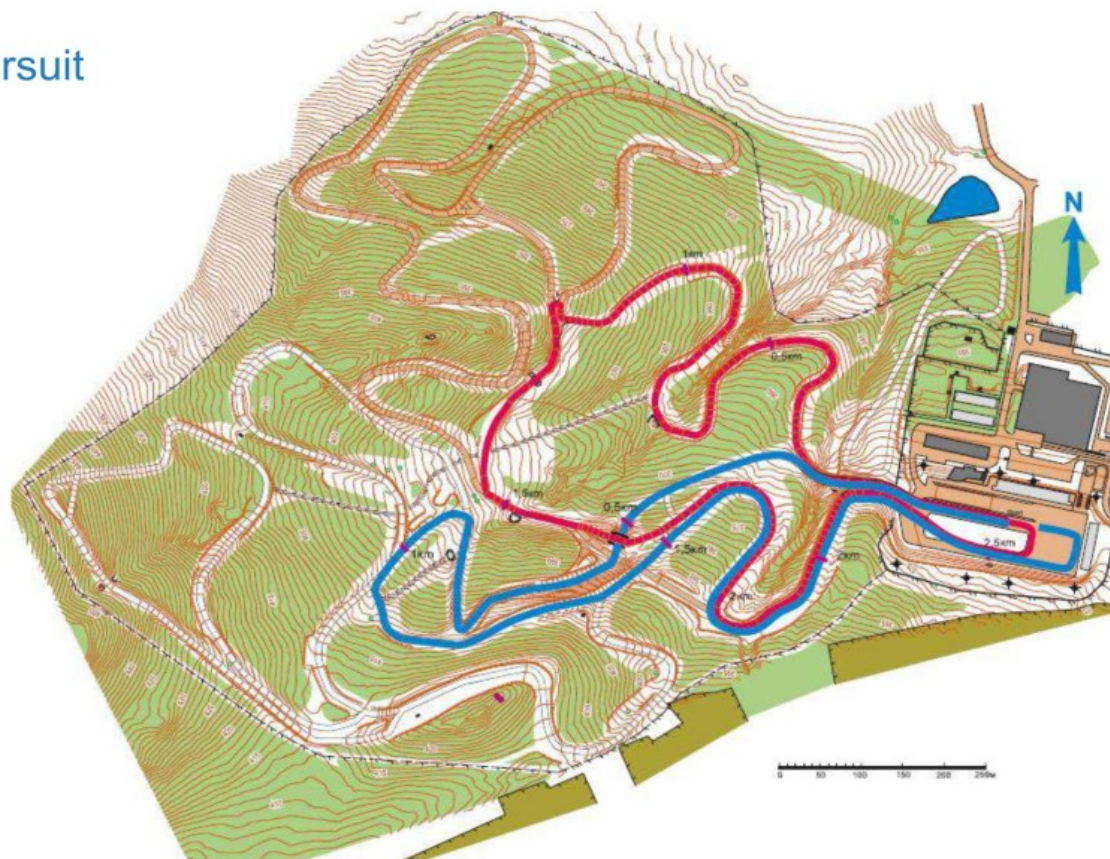
2.5 km Red + 2.5 km Blue



8.2.6. PURSUIT (F) (10 KM – MEN, 5 KM – WOMEN)

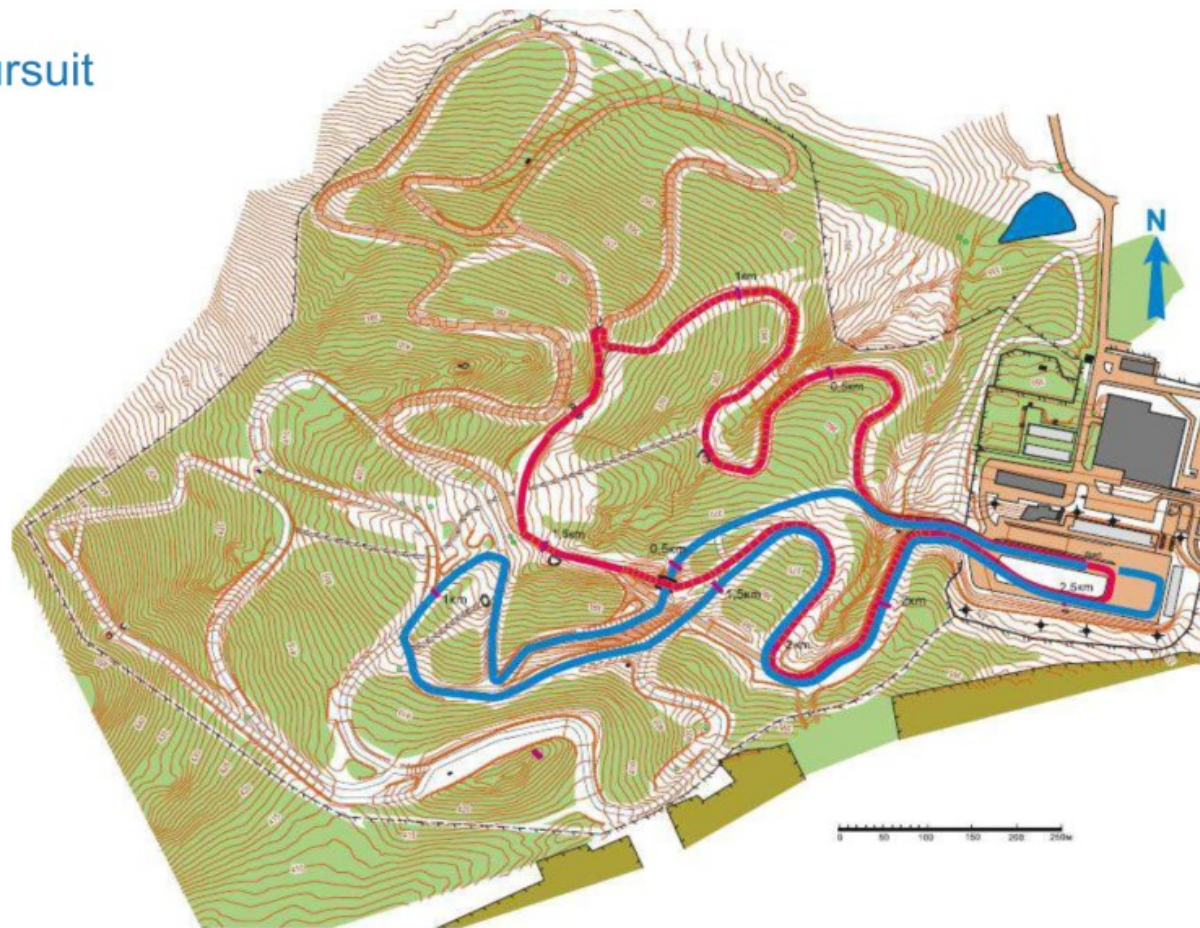
Ladies' 5 km Free Pursuit

2.5 km Red + 2.5 km Blue



Men's 10 km Free Pursuit

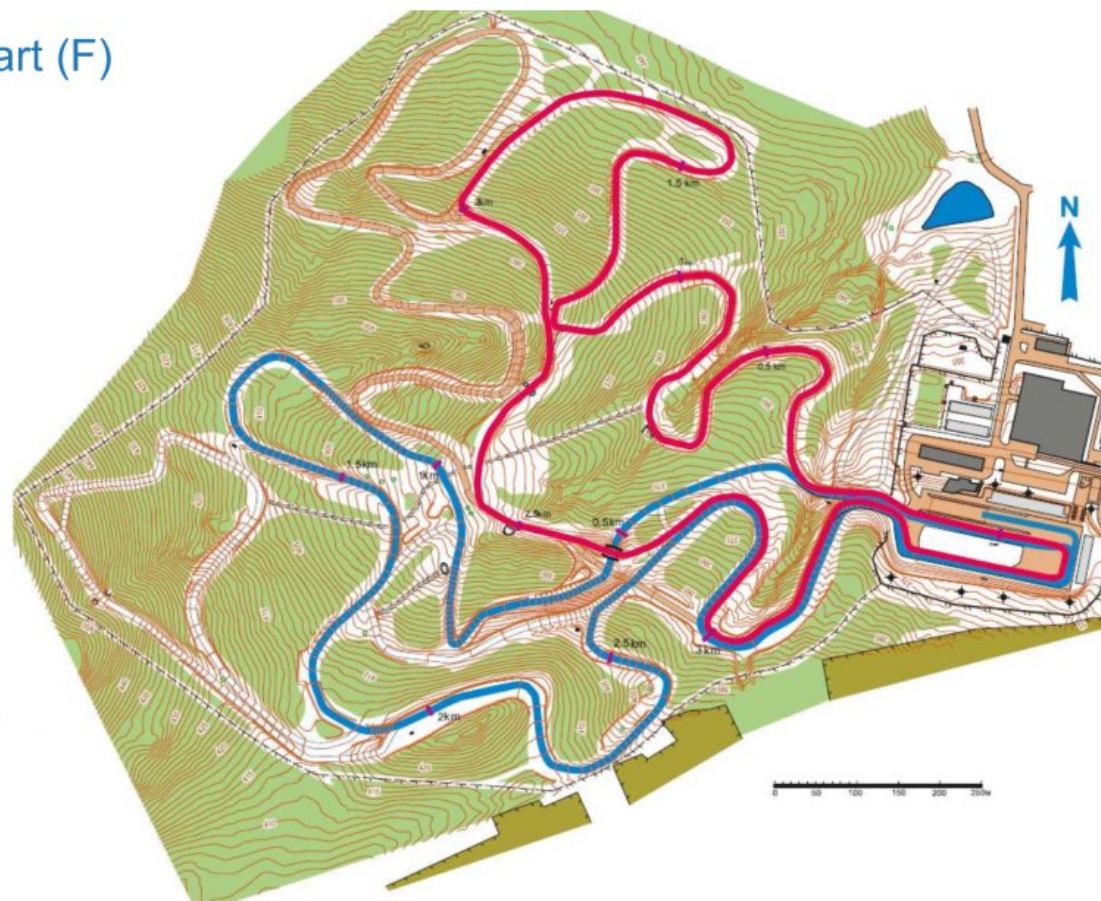
2.5 km Red + 2.5 km Blue



8.2.7.MASS START (F) (30 KM – MEN, 15 KM – WOMEN)

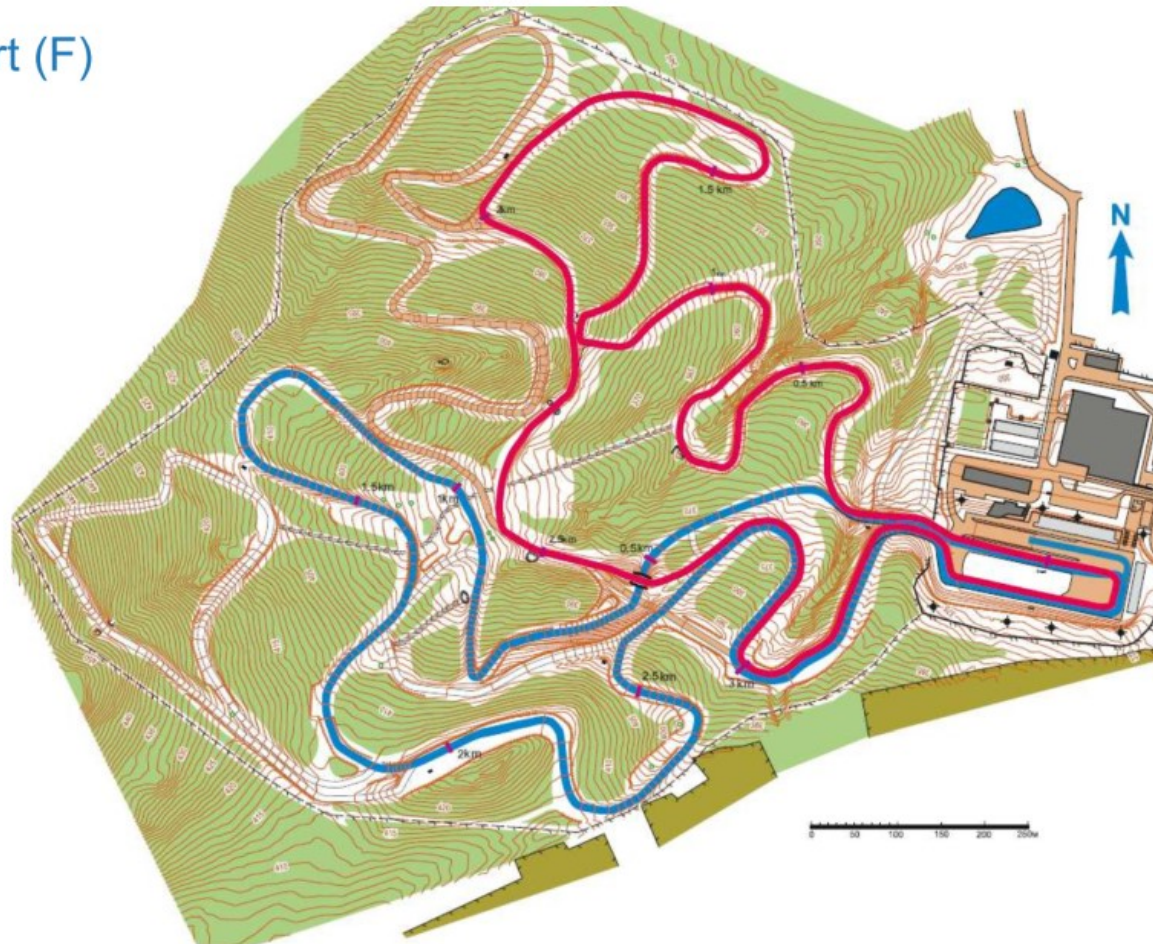
Ladies' 15 km Mass Start (F)

3.75 km Red + 3.75 km Blue



Men's 30 km Mass Start (F)

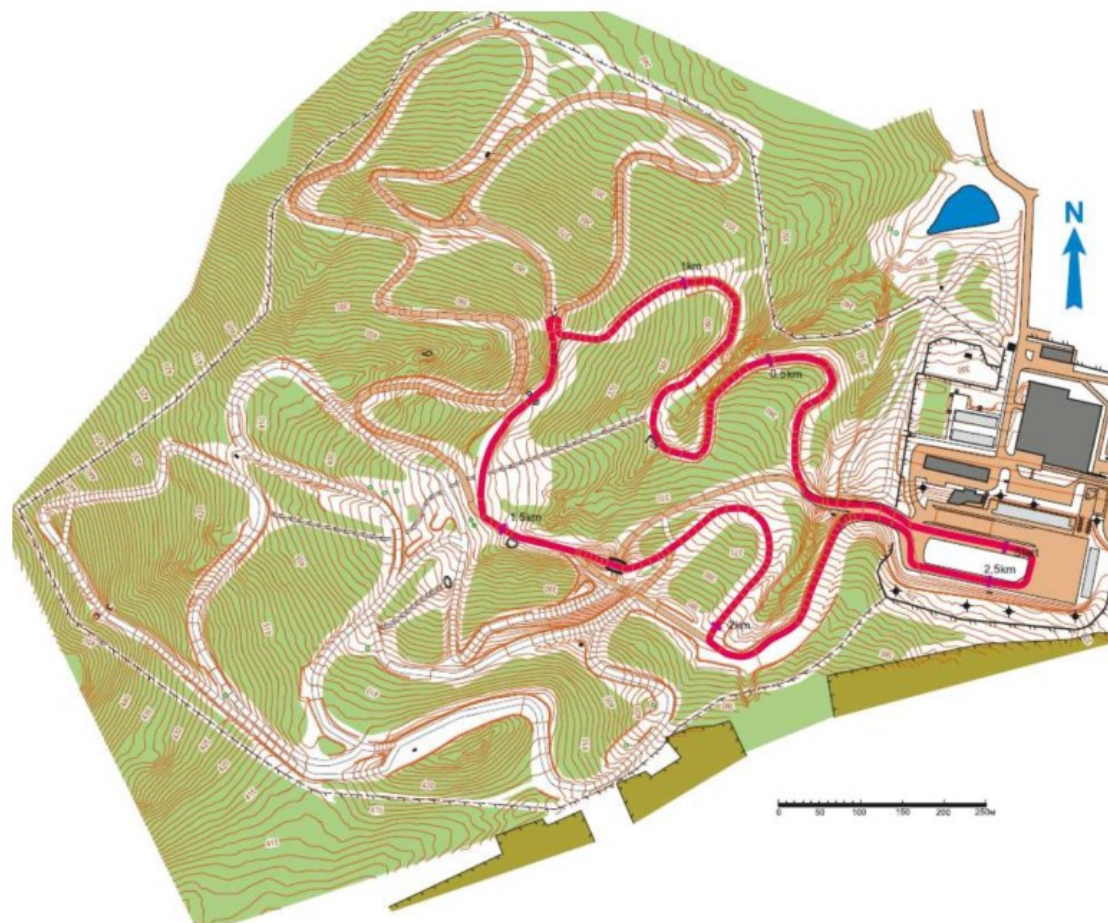
3.75 km Red + 3.75 km Blue



8.2.8. RELAY (C+F) (3X5KM W (C+FF) / 4X7,5 KM M (CC+FF))

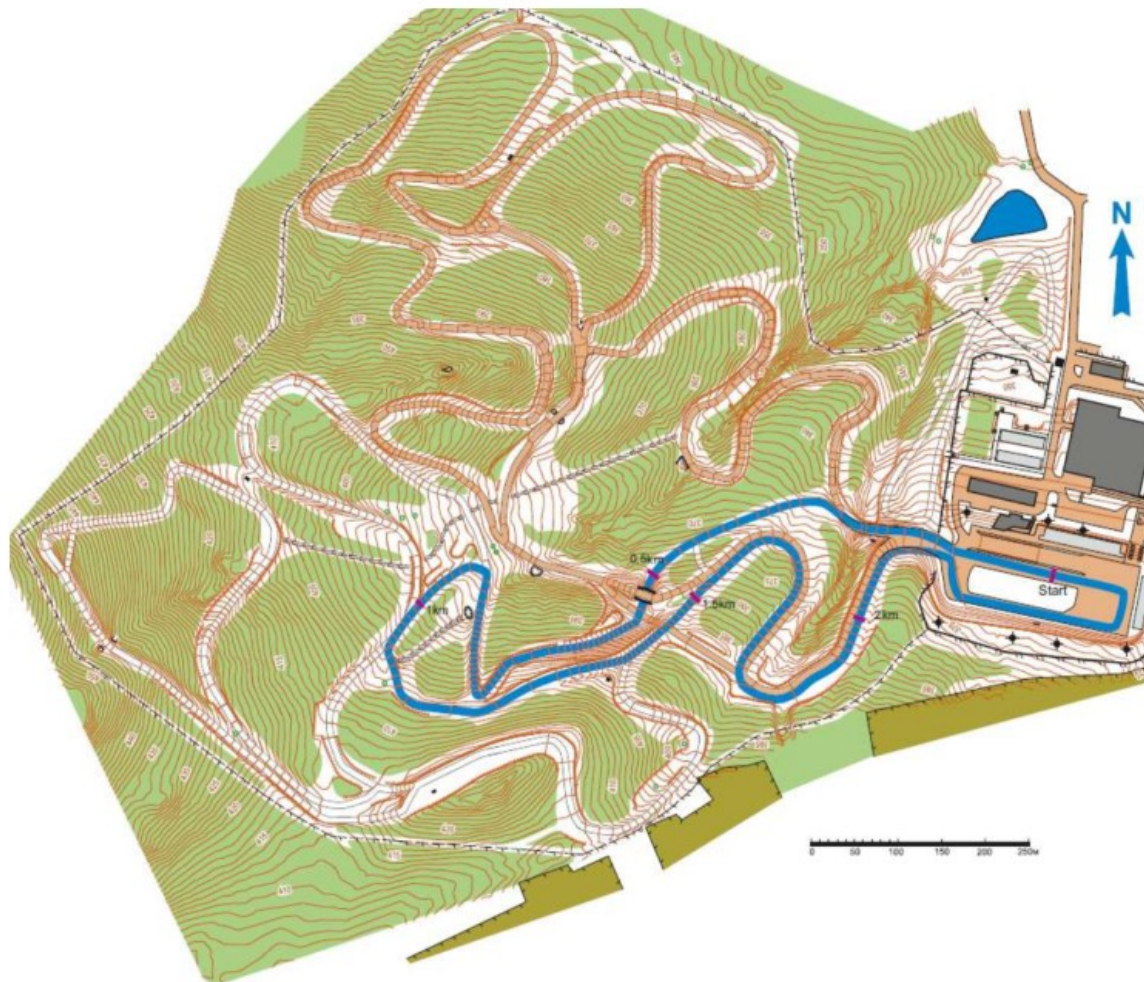
Ladies' Relay 3x5 km

2.5 km Classic



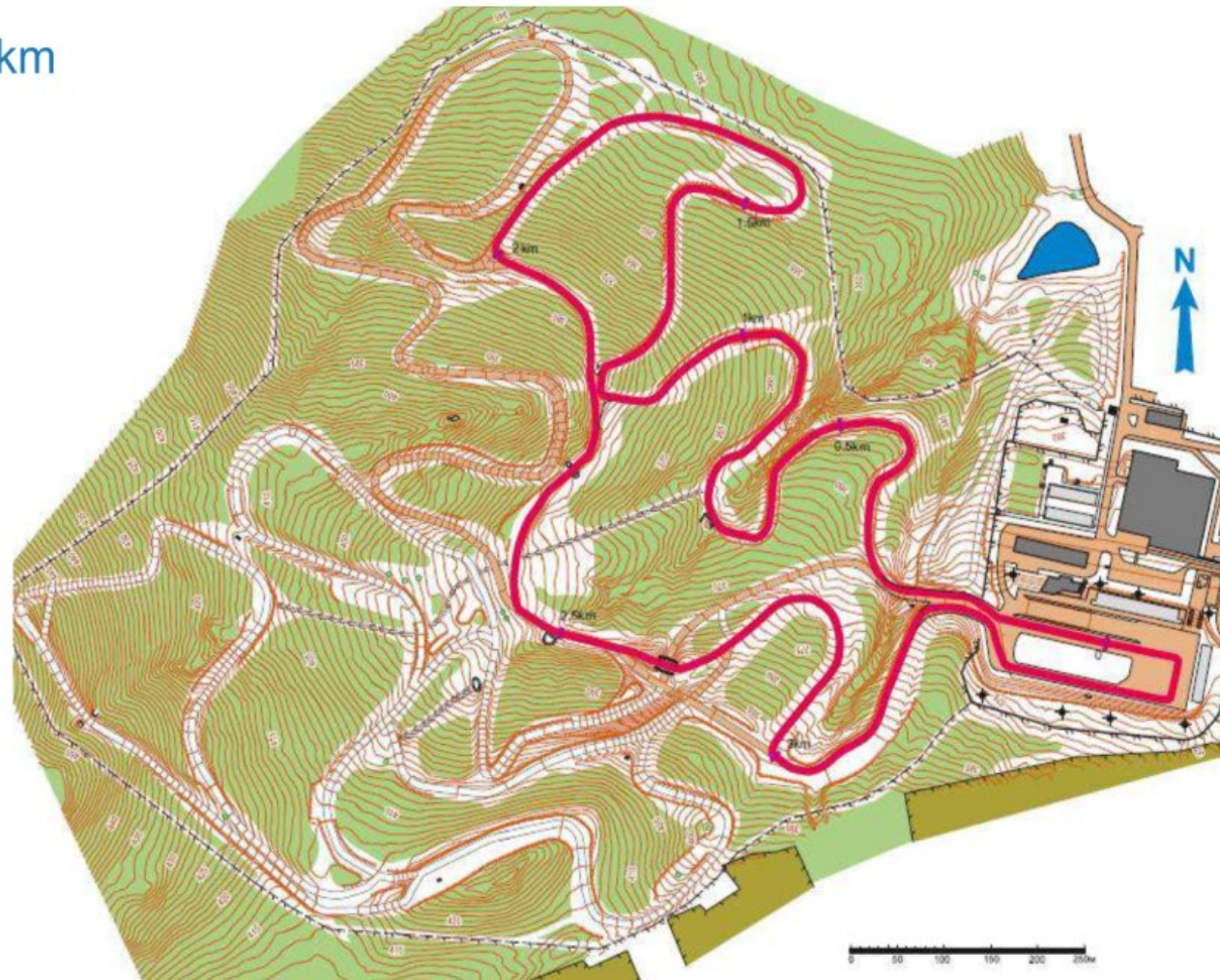
Ladies' Relay 3x5 km

2.5 km Free



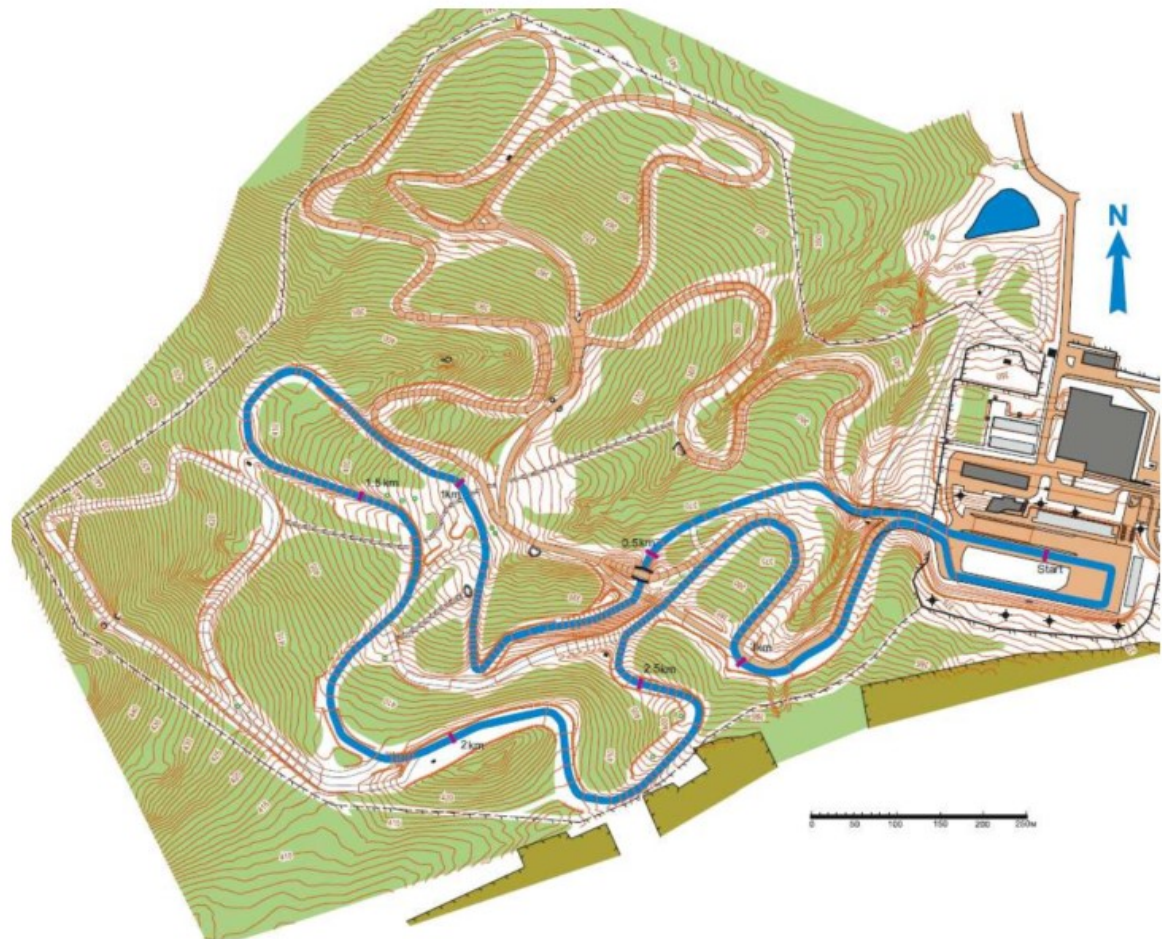
Men's Relay 4x7.5 km

3.75 km Classic



Men's Relay 4x7.5 km

3.75 km Free



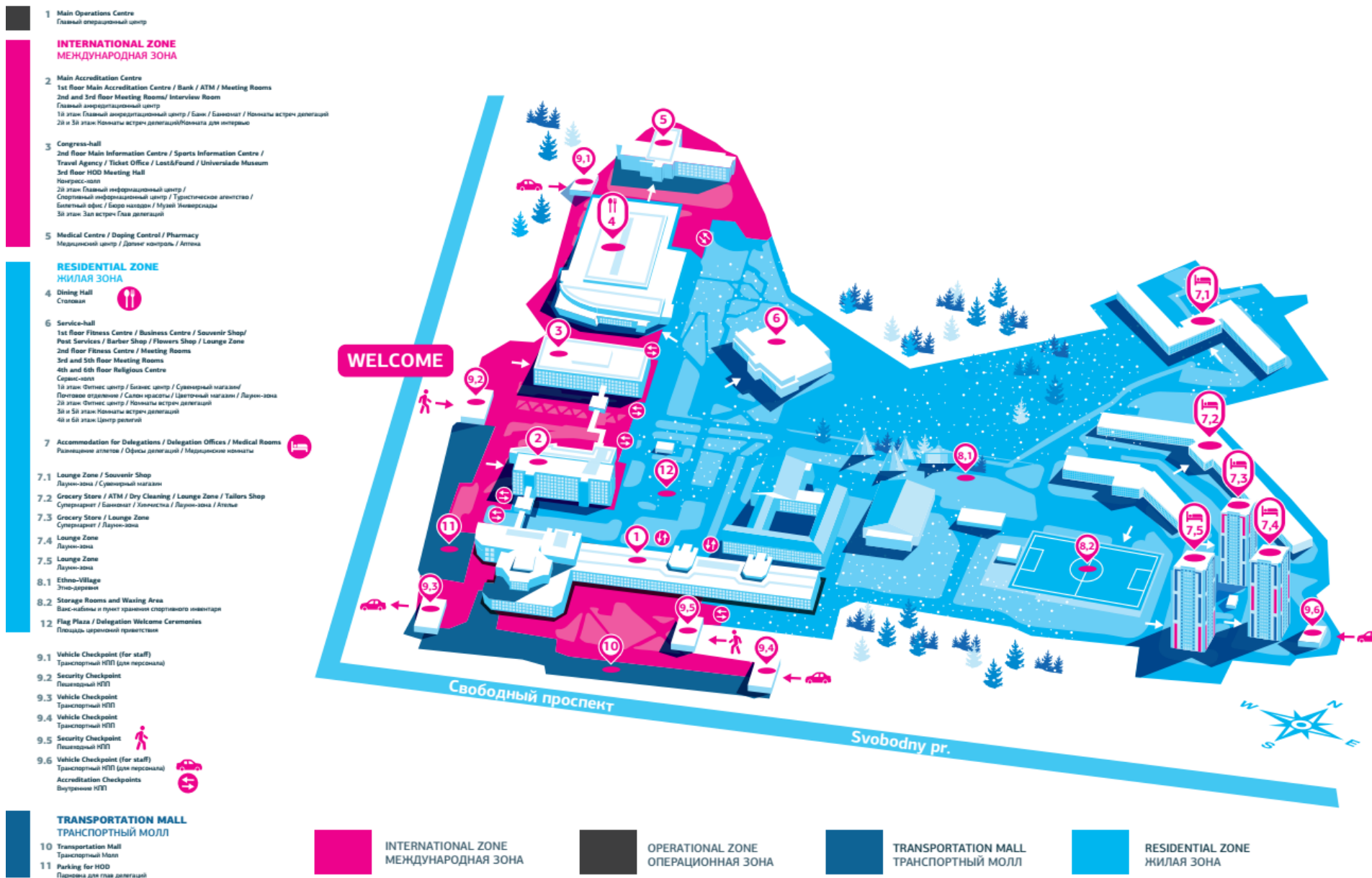
8.2.9. MIXED TEAM SPRINT (C)

Mixed Team Sprint Classic

1.5 km Sprint



8.3. UNIVERSIADE VILLAGE MAP



8.4. KRASNOYARSK CITY MAP

WINTER UNIVERSIADE 2019 ON THE MAP OF KRASNOYARSK

SPORTS VENUES

- 1 Sopka Cluster (Winter Sports Academy Sports and Training Complex)
 - ▶ Sopka Multifunctional Sports Complex
 - ▶ Snezhny Sports and Training Block
 - ▶ Halfpipe Park
 - ▶ Set of alpine skiing courses
 - ▶ Freestyle Administrative and Training Block
 - ▶ Set of freestyle skiing courses
 - ▶ Gorny Sports and Training Block

- 2 Raduga Cluster (Winter Sports Academy Sports and Training Complex)
 - ▶ Raduga Multifunctional Sports Complex
 - ▶ Lyzhny Sports and Training Block
 - ▶ Start Complex with the ski stadium, roller skiing tracks with lighting and snowmaking systems

- 3 Platinum Arena Ice Arena

- 4 Crystal Ice Arena

- 5 Funpark Bobrov Log All Season Sports and Entertainment Park
 - ▶ Set of alpine skiing courses with video broadcasting, artificial snowmaking and sports lighting systems
 - ▶ SPORT CLUB Sports and Training Block

- 6 Biathlon Academy Multifunctional Complex

- 7 Ivan Yarygin Sports Palace

- 8 Yenisei Ice Stadium

- 9 Arena Sever Multifunctional Complex

- 10 Rassvet Ice Palace

- 11 Pervomaisky Ice Arena

UNIVERSIADE VILLAGE

- 12 Athletic's Village
- 13 Village Volunteers Residence

MEDICAL VENUES

- 14 Helipads for ambulance aircrafts
- 15 Emergency Care
- 16 Hospital

UNIVERSIADE PARK

- 17 Mira Square
- 18 Tatysh Island

MAIN PRESS CENTRE

- 19 Central Stadium

TRANSPORT INFRASTRUCTURE VENUES

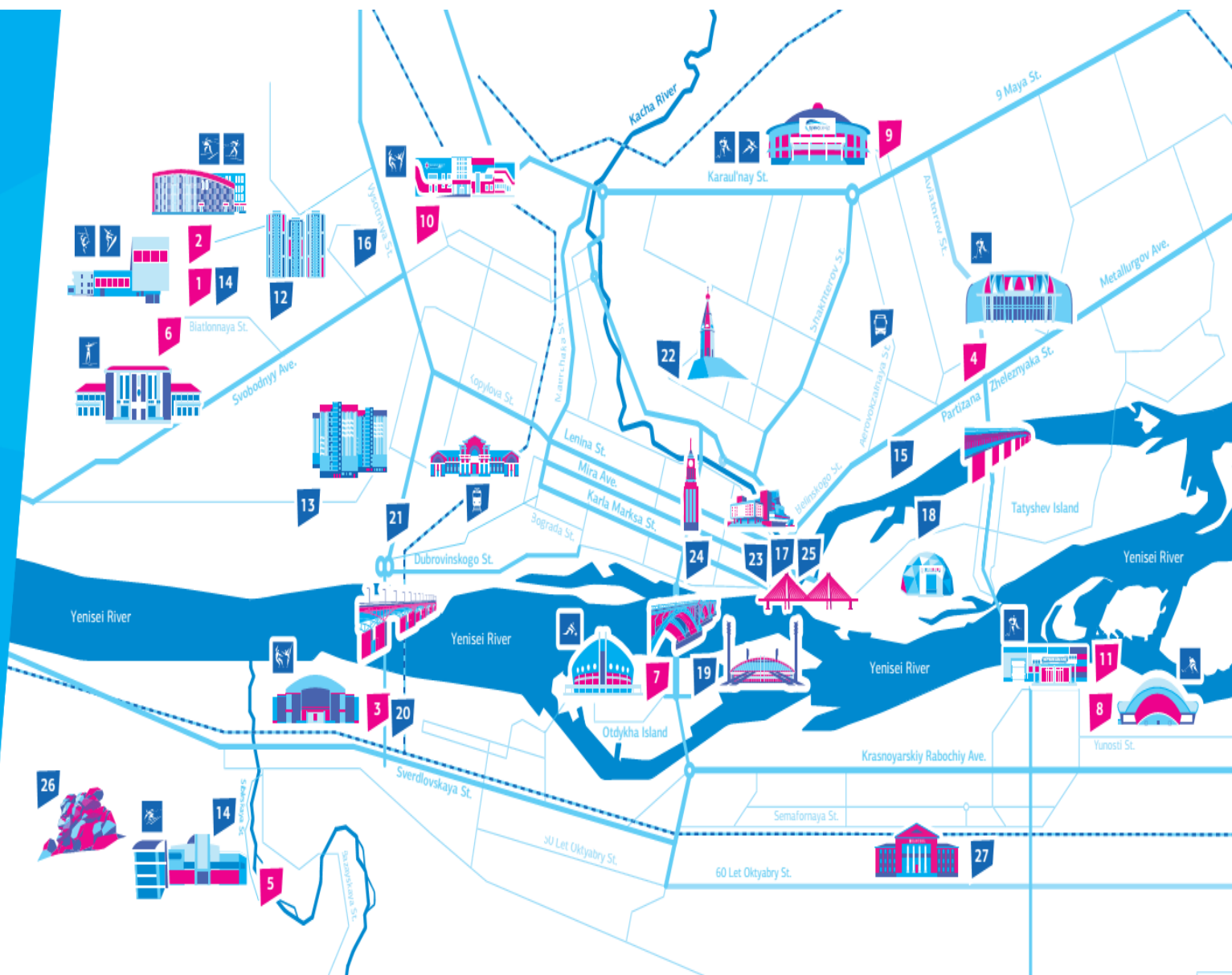
- 20 Road intersection in Tikhie Zori Microdistrict
- 21 Automobile road along Volochaevskaya Str. from Dubrovinskogo Str. to Kopylova Str.

HIGHLIGHTS OF THE CITY

- 22 Paraskeva Pyatnitsa Chapel
- 23 Krasnoyarsk Region Philharmonic Hall
- 24 Clock Tower
- 25 Vinogradovsky suspension bridge
- 26 Stolby Nature Reserve
- 27 Kamenka Cultural Space

- Intercity Bus Station

- Railway Station



FOUNDERS



GENERAL PARTNER



OFFICIAL SPONSORS

