



KRASNOYARSK 2019
29TH WINTER UNIVERSIADE



TECHNICAL HANDBOOK ICE HOCKEY WOMEN



FEBRUARY 2019

WU 2019 TECHNICAL HANDBOOK TABLE OF CONTENT

WU 2019 TECHNICAL HANDBOOK TABLE OF CONTENT	2
1. WELCOME MESSAGES	3
2. ABBREVIATIONS	4
3. FISU INTERNATIONAL TECHNICAL COMMITTEE FOR THE WINTER UNIVERSIADE (CTI – UH)	6
4. GENERAL INFORMATION.....	7
4.1. 29TH WINTER UNIVERSIADE 2019 KRASNOYARSK	7
4.2. 29TH WINTER UNIVERSIADE 2019 KRASNOYARSK COMPETITION SCHEDULE.....	7
4.3. OPENING AND CLOSING CEREMONIES	7
5. COMPETITION INFORMATION	8
5.1. TECHNICAL COMMITTEE.....	8
5.2. INTERNATIONAL TECHNICAL OFFICIALS.....	8
5.3. ICE HOCKEY WOMAN STRUCTURAL CHART	9
5.4. TECHNICAL REGULATIONS.....	10
5.5. COMPETITION FORMAT	11
5.6. COMPETITION AND TRAINING VENUE INFORMATION	17
5.7. DAY BY DAY SCHEDULE.....	18
5.8. EQUIPMENT AND UNIFORMS	21
5.9. DOPING CONTROL.....	21
5.10. AWARDS AND MEDALS	23
5.11. DIPLOMA OF HONOURS.....	24
5.12. PRESS INTERVIEWS.....	24
5.13. SPORT INFORMATION SERVICES.....	25
6. SERVICE INFORMATION	26
6.1. TEAM SERVICES.....	26
6.2. RADIO FREQUENCY CONTROL	26
6.3. ACCREDITATION	27
6.4. TRANSPORTATION	27
6.5. FOOD AND BEVERAGE	28
6.6. MEDICAL SERVICES	29
7. OC CONTACTS	30
8. APPENDICES	31
8.1. 29TH WINTER UNIVERSIADE 2019 KRASNOYARSK COMPETITION SCHEDULE.....	31
8.2. VENUE LAYOUTS.....	32
8.3. UNIVERSIADE VILLAGE MAP.....	38
8.4. KRASNOYARSK CITY MAP.....	39

1. WELCOME MESSAGES



Dear Friends,

On behalf of FISU I am delighted to welcome you to the 29th Winter Universiade which will be held on 2-12 March 2019 in Krasnoyarsk, Russia!

This technical handbook has been created to provide you with comprehensive information on your participation in the Winter Universiade. The handbook reflects an immense amount of work that FISU's Technical Committee Chairs together with the competition managers of the Organising Committee and the International Sports Federations have done to allow world's most successful student athletes to compete in the best possible environment.

The Winter Universiade is set to become a landmark event for the whole Siberia. The investments in infrastructure and sport facilities have been incredible. The organisers have been working really hard to train staff and volunteers. Our most profound appreciation goes to all those who worked day and night to offer high standards of services to all participants.

Now, the time has finally come to celebrate winter university sports in Siberia! We look forward to welcome you in Krasnoyarsk and we are sure that you will find in this manual all the necessary information that will help you to participate in the competitions in a smooth and proper manner.

Together with the entire FISU Family, I wish you all the best for a very successful Winter Universiade in Krasnoyarsk!

A handwritten signature in black ink, appearing to read 'Oleg Matytsin'.

Oleg Matytsin
FISU President



Dear Friends,

One of the most awaited and large-scale events, the Winter Universiade 2019, is going to be held in Krasnoyarsk from March 2 to 12.

The forthcoming Games will make a lasting impression on the participants' lives. More than 3,000 athletes from all over the globe will compete for 76 sets of medals in 11 sports. Thousands of people of different professions, nationalities, confessions, and cultures will be united for several days by the same world. It is the world of sport, health, unlimited opportunities, and success. Not only the victories of the best athletes and the tears of those who did not succeed will be the Universiade result, it will also leave colourful feelings of the welcoming country, beautiful city, warm-hearted Siberians. Touching memories, strong friendship and faith in creative power of sport will stay in hearts of people for years.

Over the last 5 years, working together with the International University Sports Federation, we have made complicated but interesting project a reality. It is to prepare a colourful and memorable sports event. Thousands of people including athletes, spectators, and viewers all over the world live in the breathtaking waiting, anticipating this great feast of friendship, strength and creation.

The attached technical handbook is about one of the 11 sports included into the programme of the Winter Universiade 2019. In the technical handbook one can find all the required information regarding disciplines and rules, the sports programme and main services for athletes and official delegation members. Likewise, you can familiarize yourself with the competition venue.

On behalf of the Organising Committee, I thank you for your interest in the forthcoming Games! We are looking forward to meeting you during the 29th Winter Universiade Krasnoyarsk 2019!

**Maxim Urazov,
Director General
ANO "Directorate Krasnoyarsk 2019"**

A handwritten signature in dark ink, appearing to be 'MU' or similar, written in a cursive style.

2. ABBREVIATIONS

Abbreviation	Name in full
ADAMS	Anti-Doping Administration and Management System
CIC	FISU International Control Committee
CMI	FISU International Medical Committee
CT	FISU Technical Committee
CTI-UH	FISU International Technical Committee for Winter Universiade
EC	FISU Executive Committee
FISU	International University Sports Federation
GTM	General Technical Meeting
HOD	Head of Delegation
RIHF	Russian Ice Hockey Federation
IHO	Ice Hockey
IIHF	International Ice Hockey Federation
IR	International Referee
ISF	International Sports Federation
ITO	International Technical Official
NADO	National Anti-Doping Organisation
NOC	National Olympic Committee
NSF	National Sports Federation
NTO	National Technical Official
NUSF	National University Sports Federation
OC	Organizing Committee
RADO	Regional Anti-Doping Organisation
SIC	Sport information Centre
SID	Sport Information Desk
TD	Technical Delegate
TCC	Technical Committee Chair
TO	Technical Official
TUE	Therapeutic Use Exemptions
UV	Universiade Village
WADA	World Anti-Doping Agency
WU	Winter Universiade

3. FISU INTERNATIONAL TECHNICAL COMMITTEE FOR THE WINTER UNIVERSIADE (CTI – UH)

Position	First Name	Last Name	Country
FISU CTI-UH Chair	Roger	ROTH	SUI
FISU CTI-UH Vice Chair	Robert	PHILIP	CAN
FISU TCC Alpine Skiing	Matjaz	KRANJC	SLO
FISU TCC Biathlon	Karl-Heinz	WOLF	GER
FISU TCC Cross-Country Skiing	Zofia Stefania	KIELPINSKA	POL
FISU TCC Curling	Jeanette	JOHNSTON	GBR
FISU TCC Figure Skating	Marie	LUNDMARK	FIN
FISU TCC Freestyle Skiing	Magnus	FERRY	SWE
FISU TCC Snowboard	Ola	SUNDEKVIST	SWE
FISU TCC Ice Hockey	Reto	BERTOLOTTI	SUI
FISU TCC Ice Hockey	Jarmo	JALARVO	FIN
FISU TCC Short Track	Nam Hwan	PARK	KOR
FISU TCC Ski Orienteering	Valentin	GARKOV	BUL
FISU TCC Bandy	Tor Audun	SOERENSEN	NOR

4. GENERAL INFORMATION

4.1. 29TH WINTER UNIVERSIADE KRASNOYARSK 2019

Date:	2 – 12 March 2019
Location:	Krasnoyarsk, Russia
Sports Programme:	11 Sports (8 Compulsory, 3 Optional) with 76 events
Venues:	10 Competition venues, 1 Training venue

4.2. 29TH WINTER UNIVERSIADE KRASNOYARSK 2019 COMPETITION SCHEDULE

Please refer to Appendix 8.1.

4.3. OPENING AND CLOSING CEREMONIES

4.3.1. OPENING CEREMONY

Date:	2 March 2019
Location:	Platinum Arena Ice Arena
The beginning of the Ceremony:	20:19
Duration:	3 hours
March pass of the athletes:	20:30 – 21:20

4.3.2. CLOSING CEREMONY

Date:	12 March 2019
Location:	Platinum Arena Ice Arena
The beginning of the Ceremony:	20:00
Duration:	2hours 30 minutes

5. COMPETITION INFORMATION

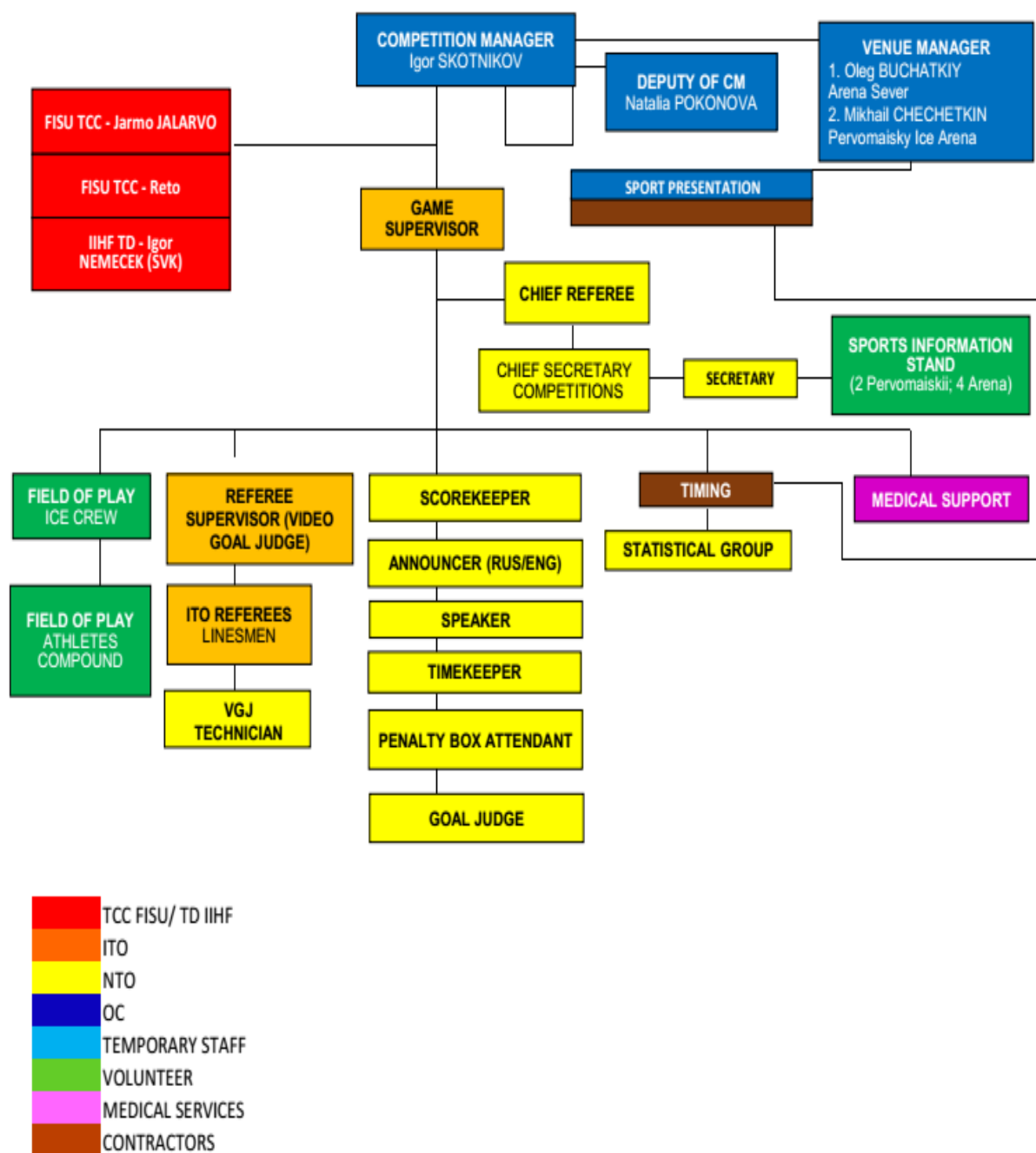
5.1. TECHNICAL COMMITTEE

Technical Committee Chair	Reto BERTOLOTTI (SUI) Jarmo JALARVO (FIN)
IIHF Technical Delegate	Igor NEMECEK (SVK)
IHF Medical Supervisor	Daniele MONA (SUI)
NSF Technical Delegate	Denis SHATKHIN (RUS)
Competition Manager	Igor SKOTNIKOV (RUS)

5.2. INTERNATIONAL TECHNICAL OFFICIALS

IIHF Referees Supervisor	Freddy REICHEN (SUI)
Referee	Julia KAINBERGER (AUT)
Referee	Michelle STAPLETON (CAN)
Referee	Irina MOGILNIKOVA (KAZ)
Referee	Agnese KARKLINA (LAT)
Referee	Elena IVANOVA (RUS)
Referee	Laura WHITE (USA)
Referee	Alexandra KÖHL (SWE)
Linesmen	Jessica CHARTRAND (CAN)
Linesmen	Hui WANG (CHN)
Linesmen	Katerina PIPKOVA (CZE)
Linesmen	Linnea SAINIO (FIN)
Linesmen	Arina MUKHA (RUS)
Linesmen	Anina EGLI (SUI)
Linesmen	Erika GREENEN (USA)

5.3. ICE HOCKEY WOMAN STRUCTURAL CHART



5.4. TECHNICAL REGULATIONS

The ice hockey events shall be organised in accordance with the most recent regulations of the International Ice Hockey Federation (IIHF), except when specifically amended with WU2019 Regulations or by the CTI-UH. In any dispute the English text will be regarded as authoritative.

The competition will include one women's tournament with a six (6) teams.

Each country is authorised to enter a women's team comprised of twenty (20) players and three (3) goalkeepers. Once the tournament starts and the Head of Delegation/Coach signs the list (roster) of players and goalkeepers, no replacements, no changes or additions shall be permitted to the list (roster).

At the first General Technical Meeting, the Head of Delegation or his/her representative shall confirm and sign the official list of competitors.

No player or team official under a current suspension from FISU, IIHF or the national federation of his/her country may take part in the tournament.

On ice officiating system: «four man system» (two referees and two linesmen). FISU TCC may, at their sole discretion, apply the (1) referee and two (2) linesmen system for games in the Round Robin.

5.4.1. PROTEST AND APPEAL

Any protest of a sport or disciplinary nature must reach the Jury or other proper authority according to the regulations laid down by the IIHF.

Such protest must be accompanied by a deposit, the amount of which is set in line with the ISF regulations, if not otherwise specified in the technical regulations of concerned sport.

Each Head of Delegation or his/her deputies are authorized to lodge an appeal against the decision of the Jury. This appeal must be submitted in writing to the Jury of Appeal or proper authority in accordance with the IIHF regulations.

Any sport disciplinary situation, which cannot be satisfactorily resolved by the sport technical committees and the sport specific disciplinary regulations, will be reported to the FISU Disciplinary Committee for further action to be taken. Where appropriate, a report will be sent to IIHF.

5.5. COMPETITION FORMAT

5.5.1. ENTRIES

Six countries have qualified to enter teams and participate in accordance with FISU WU2019 Regulations. The teams have been placed in one group based on the FISU Ranking.

Women
RUS
CAN
USA
CHN
JPN
SUI

5.5.2. NUMBER OF PLAYERS ON THE LINEUP SHEET

Sixty minutes before the start of the game, a representative from each team must provide the scorekeeper with a lineup (list of names and corresponding jersey numbers for players dressed), including the names of the captain and alternate captains.

Each team is allowed to dress a maximum of 20 skaters and two goaltenders for a game. Only eligible players are allowed to be listed on the lineup sheet and play in a game.

If, during the course of a game, both goaltenders of a team are unable to play, the team will be allowed to dress a skater from the players' bench to play as a goaltender. The skater has ten minutes in which to dress and be ready to play, but if he is ready prior to ten minutes he is allowed to use the remaining time for warmup on ice.

With the exception of a third goaltender, no alterations to the lineup are allowed once the game has started.

5.5.3. GAME FORMAT

A game consists of three periods of 20 minutes (with two intermissions above 15 minutes, if not otherwise decided in the Directorate) plus overtime and a penalty-shot shootout if required.

5.5.4. TOURNAMENT FORMAT

The format of the Women's Tournament comprises:

1. PRELIMINARY ROUND played in one group (15 games) from which 4 teams will qualify to the semi-finals
2. SEMI-FINAL ROUND (2 games)

3. MEDAL ROUND (2 games) – Bronze Medal Game and Gold Medal Game.

During the PRELIMINARY ROUND the teams will play a round robin. Four leaders of group will be qualified for the SEMI-FINALS.

The SEMI-FINAL ROUND will be played as follows:

1st place vs 4th place
2nd place vs 3rd place

The two winning teams will play in the Gold Medal game and the two losing teams will play in the Bronze Medal game.

5.5.5.THREE POINT SYSTEM (2019 IIHF SPORT REGULATIONS)

For all games, points shall be awarded as follows:

- 3 points for the winning team at the conclusion of regulation time
- 1 point for both teams at the conclusion of regulation time if the game is tied
- An additional point earned for the team winning the game in a 5-minute overtime period, or the Penalty-Shot Shootout Procedure if the teams are still tied following conclusion of the overtime period
- 0 points for the team losing the game in regulation time

5.5.6.TIE BREAKING SYSTEM (2019 IIHF SPORT REGULATIONS)

The tie-breaking system for two teams with the same number of points in a standing will be the game between the two teams, the winner of the game taking precedence.

Due to the fact that the three-point system does not allow a game to end in a tie, then the following tie breaking procedure is applicable when three or more teams are tied in points in a Championship standing.

Should three or more teams be tied on points, then a tie breaking formula will be applied as follows, creating a sub-group amongst the tied teams. This process will continue until only two or none of the teams remain tied. In the case of two remaining tied teams, the game between the two would then be the determining tie-breaker as the game could not end as a tie. In the case of none of the teams being tied, the criteria specified in the following respective step applies.

Step 1:

Taking into consideration the games between each of the tied teams, a sub-group is created applying the points awarded in the direct games amongst the tied teams from which the teams are then ranked accordingly.

Step 2:

Should three or more teams still remain tied in points then the better goal difference in the direct games amongst the tied teams will be decisive.

Step 3:

Should three or more teams still remain tied in points and goal difference then the highest number of goals scored by these teams in their direct games will be decisive.

Step 4:

Should three or more teams still remain tied in points, goal difference and goals scored then the results between each of the three teams and the closest best-ranked team outside the subgroup will be applied. In this case the tied team with the best result (1. points, 2. goal difference, 3. more goals scored) against the closest best ranked-team will take precedence.

Step 5:

Should the teams still remain tied, then the results between each of the three teams and the next highest best-ranked team outside the sub-group will be applied.

Step 6:

Should the teams still remain tied after these five steps have been exercised then Sport considerations will be applied and the teams will be ranked by their positions coming into the Championship (i.e. seeding).

The IIHF Tie Breaking System will be used to resolve ties before the end of the Preliminary Round.

In the case where two teams are tied and they have not yet played against each other, and in the case where three or more teams are tied and not all mutual games have been played within the sub-group, the following criteria will be used to break the tie:

1. Fewest number of games played
2. Highest Goal Differential (GF-GA) in all games
3. Highest number of Goals For (GF) in all games
4. Highest tournament seeding entering the tournament

In the case of three or more tied teams, this process will continue until only two teams remain tied. The game between the two remaining tied teams would then be the determining tiebreaker. If the two remaining tied teams have not played each other then the tie break will be determined by re-starting the process only for these two teams.

5.5.7. OVERTIME OPERATIONS

Overtime – Operations for a Round Robin or for a Preliminary Round Game:

If at the end of the three (3) regular twenty (20) minutes periods in a single Round Robin championship or the Preliminary Round of a top category championship and the two playing teams are tied, the teams will then play a 'sudden death' overtime period of not more than five (5) minutes with the team scoring first declared the winner. The overtime period shall be played with each team at a numerical strength of three (3) skaters and one (1) goaltender. The overtime period will commence following a three-minute intermission during which time a shoveling of the ice surface by arena personnel will be performed utilizing the same procedure as during television time-outs. Once the intermission has been completed, the clock will be reset to 5:00 minutes and the overtime period will begin immediately. Teams will not change ends. The players will remain at their respective player benches during the 3-minute intermission in which the shoveling of the ice surface takes place. Goaltenders must go to their respective players' benches during this rest period, however, penalized players must remain on the penalty bench. Should

a penalized player exit the penalty bench, he shall be returned immediately by the game officials with no additional penalty being assessed, unless he commits an infraction of any other rule. Teams are not permitted to return to the dressing room during this time.

Penalties:

When regulation time ends, and the teams are 5 on 3, teams will start the overtime period with 5 on 3. Once player strength reaches 5 on 4 or 5 on 5, at the next stoppage of play, player strength is adjusted to 4 on 3 or 3 on 3, as appropriate. When regulation time ends, and teams are 4 on 4 teams will start overtime 3 on 3. Once player strength reaches 4 on 4, at the next stoppage player strength is adjusted to 3 on 3 as appropriate. If at the end of regulation time teams are 3 on 3, overtime starts 3 on 3. Once player strength reaches 4 on 4, 5 on 4 or 5 on 5, at the next stoppage player strength is adjusted to 3 on 3 or 4 on 3 as appropriate. At no time will a team have less than three players on the ice. This may require a fourth and/or fifth skater to be added in the event penalties are assessed. If a team is penalized in overtime, teams play 4 on 3. If both teams are penalized with minor penalties at the same stoppage of play (with no other penalties in effect), teams will continue to play 3 on 3. In overtime, if a team is penalized such that a two-man advantage is called for, then the offending team will remain at three (3) skaters while the non-offending team will be permitted five (5) skaters. At the first stoppage of play after the two-man advantage is no longer in effect, the numerical strength of the teams will revert back to 4 on 3 or 3 on 3, as appropriate.

Overtime – Operations for a Playoff Game or for a Bronze Medal Game:

If at the end of the three (3) regular twenty (20) minutes periods in a Playoff Game, a Relegation Round Game, a Classification Round Game or in a Bronze Medal Game and the two playing teams are tied, the teams will then play a 'sudden death' overtime period of not more than 10 minutes with the team scoring first declared the winner. The overtime period shall be played with each team at a numerical strength of four (4) skaters and one (1) goaltender. The overtime period will commence following a three-minute intermission during which time a shoveling of the ice surface will be performed by arena personnel utilizing the same procedure as during television time-outs. Once the intermission has been completed, the clock will be reset to 10:00 minutes and the overtime period will begin immediately. Teams will not change ends. The players will remain at their respective player benches during the 3-minute intermission in which the shoveling of the ice surface takes place. Goaltenders must go to their respective players' benches during this rest period, however, penalized players must remain on the penalty bench. Should a penalized player exit the penalty bench, he shall be returned immediately by the game officials with no additional penalty being assessed, unless he commits an infraction of any other rule. Teams are not permitted to return to the dressing room during this time.

Penalties:

When regulation time ends, and the teams are 5 on 3, teams will start the overtime period with 5 on 3. Once player strength reaches 5 on 4 or 5 on 5, at the next stoppage of play, player strength is adjusted to 4 on 3 or 4 on 4, as appropriate. When regulation time ends, and teams are 4 on 4 teams will start overtime 4 on 4.

Once player strength reaches 5 on 4 or 5 on 5, at the next stoppage player strength is adjusted to 4 on 3 or 4 on 4 as appropriate. If at the end of regulation time teams are 3 on 3, overtime starts 3 on 3. Once player strength reaches 4 on 4, 5 on 4 or 5 on 5, at the next stoppage player strength is adjusted to 4 on 3 or 4 on 4 as appropriate. At no time will a team have less than three players on the ice. If a team is penalized in overtime, teams play 4 on 3. If both teams are penalized with minor penalties at the same stoppage of play (with no other penalties in effect), teams will continue to play 4 on 4.

In overtime, if a team is penalized such that a two-man advantage is called for, then the offending team will remain at three (3) skaters while the non-offending team will be permitted five (5) skaters. At the first stoppage of play after the two-man advantage is no longer in effect, the numerical strength of the teams will revert to 4 on 3 or 4 on 4, as appropriate.

Overtime – Operations for the Gold Medal Game:

If at the end of the three (3) regular twenty (20) minutes periods in a Gold Medal Game of a top category championship and the two playing teams are tied, the teams will then play a 'sudden death' overtime period of not more than 20 minutes with the team scoring first declared the winner. The overtime period shall be played with each team at a numerical strength of four (4) skaters and one (1) goaltender. The overtime period will commence following an ice resurfacing during a 15-minute intermission where the teams will return to their dressing room before the start of the overtime period. Teams will not change ends.

Penalties:

When regulation time ends, and the teams are 5 on 3, teams will start the overtime period with 5 on 3. Once player strength reaches 5 on 4 or 5 on 5, at the next stoppage of play, player strength is adjusted to 4 on 3 or 4 on 4, as appropriate. When regulation time ends, and teams are 4 on 4 teams will start overtime 4 on 4. If at the end of regulation time teams are 3 on 3, overtime starts 3 on 3. Once player strength reaches 4 on 4, 5 on 4 or 5 on 5, at the next stoppage player strength is adjusted to 4 on 3 or 4 on 4 as appropriate.

At no time will a team have less than three players on the ice. If a team is penalized in overtime, teams play 4 on 3. If both teams are penalized with minor penalties at the same stoppage of play (with no other penalties in effect), teams will continue to play 4 on 4. In overtime, if a team is penalized such that a two-man advantage is called for, then the offending team will remain at three (3) skaters while the non-offending team will be permitted five (5) skaters. At the first stoppage of play after the two-man advantage is no longer in effect, the numerical strength of the teams will revert back to 4 on 3 or 4 on 4, as appropriate.

5.5.8. PENALTY-SHOT SHOOTOUT PROCEDURE (2019 IIHF SPORT REGULATIONS)

If following the completion of regulation time in any IIHF Championship game and the score of the game is tied, the teams will then play an overtime period with a maximum duration and number of players as specified in the IIHF Sport Regulations with the team scoring first declared the winner.

If no goal is scored in the overtime period then the IIHF Penalty-Shot Shootout Procedure will apply. The following procedure will be utilized:

1. Shots will be taken at both ends of the ice surface. The 14-meter wide longitudinal centre section of the rink, between the Face-Off Spots in the neutral and end zones, will be dry scraped by the ice-resurfacing machine prior to the Penalty-Shot Shootout during the time required to organize the program accordingly.

2. The procedure will begin with five (5) different shooters from each team taking alternate shots. The players do not need to be named beforehand. Eligible to participate in the Penalty-Shot Shootout will be the four goalkeepers and all players from both teams listed on the official game sheet except as specified in article 3 below.

3. Any player whose penalty had not been completed when the overtime period ended is not eligible to be one of the players selected to take the shots and must remain in the penalty box or in the dressing room. Also, players serving penalties assessed during the Penalty Shot Shootout must remain in the penalty box or in the dressing room until the end of the procedure.

4. The Referee will call the two captains to the Referee Crease and flip a coin to determine which team takes the first shot. The winner of the coin toss will have the choice whether his team will shoot first or second.

5. The goalkeepers shall defend the same goal as in the overtime period and may remain at their goal creases while the opposing team is taking a shot.

6. The goalkeepers from each team may be changed after each shot.

7. The shots will be taken in accordance with Rule 63 of the IIHF Official Rule Book.

8. The players of both teams will take the shots alternately until a decisive goal is scored. The remaining shots will not be taken.

9. If the result is still tied after all shots by each team the procedure shall continue with a tiebreak shoot-out by one player of each team, with the same or new players with the other team starting to take the tie-break shots. The same player can also be used for each shot by a team in the tie-break shoot-out. The game shall be finished as soon as a duel of two players brings the decisive result.

10. The Official Scorekeeper will record all shots taken, indicating the players, goalkeepers and goals scored.

11. Only the decisive goal will count in the result of the game. It shall be credited to the player who scored and to the goalkeeper concerned. 25 Approved May 2017 IIHF Annual Congress; Cologne, Germany.

12. If a team declines to participate in the Penalty-Shot Shootout, the game will be declared as a loss for that team and the other team will be awarded 3 points for a win. If a player declines to take a shot it will be declared "no score" for his team.

5.6. COMPETITION AND TRAINING VENUE INFORMATION

5.6.1. GENERAL INFORMATION

OC Venue Manager – Pervomaisky Ice Arena	Mikhail CHECHETKIN
OC Venue Manager – Arena Sever	Oleg BUCHATSKII

Venue	Function	Location	Distance to UV
Pervomaisky Ice Arena	Training / Competition	Krasnoyarsk, Parkovaya Str., 19 56.020727, 92.976927	19,9 km / 42 min
Arena Sever	Training / Competition	Krasnoyarsk, 9 Maya Street, 74 56.050737, 92.894640	13 km / 30 min

5.6.2. VENUE LAYOUTS

Please refer to the Appendix 8.2.

5.7. DAY BY DAY SCHEDULE

Training
Competition
Technical Meeting
Medal Awarding Ceremony
Test Game

Date	Day	Start time	Finish Time	Event	Venue
23 February	SUT	09:00	10:15	Training	Pervomaisky Ice Arena
		10:30	11:45	Training	
		12:00	13:15	Training	
		13:30	14:45	Training	
		15:00	16:15	Training	
		16:30	17:45	Training	
24 February	SUN	09:00	10:15	Training	Pervomaisky Ice Arena
		10:30	11:45	Training	
		12:00	13:15	Training	
		13:30	14:45	Training	
		15:00	16:15	Training	
		16:30	17:45	Training	
25 February	MON	09:00	10:15	Training	Pervomaisky Ice Arena
		10:30	11:45	Training	
		12:00	13:15	Training	
		13:30	14:45	Training	
		15:00	16:15	Training	
		16:30	17:45	Training	
26 February	TUE	08:00	08:30	Pre-game practice	Pervomaisky Ice Arena
		08:45	09:15	Pre-game practice	
		09:30	10:15	Training	
		13:30	15:00	Test Game	Pervomaisky Ice Arena
		15:15	16:30	Training	Pervomaisky Ice Arena
		16:45	18:00	Training	
		18:15	19:30	Training	
27 February	WED	09:00	10:15	Training	Pervomaisky Ice Arena
		10:30	11:45	Training	
		12:00	13:15	Training	
		13:30	14:45	Training	
		15:00	16:15	Training	
		16:30	17:45	Training	
28 February	THU	09:00	10:00	Referees	Pervomaisky Ice Arena
		13:15	14:15	USA	
		14:30	15:30	JPN	

		15:45	16:45	CAN	
		17:00	18:00	CHN	
		17:30	18:30	IHO Team Medical Meeting	Universiade Village
		17:30	18:30	HCRIM (Head Coaches Rule Information Meeting)	
		18:15	19:15	SUI	Pervomaisky Ice Arena
		19:30	20:30	RUS	
		19:30	20:30	Directorate #1 (GTM)	Universiade Village
1 March	FRI	08:00	08:30	CAN	Pervomaisky Ice Arena
		08:45	09:15	CHN	
		09:30	10:00	SUI	
		10:15	10:45	RUS	
		12:30	15:00	JPN - USA (1)	Pervomaisky Ice Arena
		16:00	18:30	CHN - CAN (2)	
		19:30	22:00	SUI - RUS (3)	
2 March	SAT	08:00	09:00	JPN	Pervomaisky Ice Arena
		09:15	10:15	CAN	
		10:30	11:30	SUI	
		11:45	12:45	USA	
		13:00	14:00	CHN	
		14:15	15:15	RUS	
3 March	SUN	08:00	08:30	SUI	Pervomaisky Ice Arena
		08:45	09:15	USA	
		09:30	10:00	CHN	
		10:15	10:45	RUS	Pervomaisky Ice Arena
		12:30	15:00	CAN - JPN (4)	
		16:00	18:30	USA - SUI (5)	
		19:30	22:00	RUS - CHN (6)	
		22:15	23:15	Directorate #2	Pervomaisky Ice Arena
4 March	MON	08:00	08:30	CHN	Pervomaisky Ice Arena
		08:45	09:15	SUI	
		09:30	10:00	JPN	
		10:15	10:45	RUS	
		12:30	15:00	CAN - USA (7)	Pervomaisky Ice Arena
		16:00	18:30	SUI - CHN (8)	
		19:30	22:00	RUS - JPN (9)	
5 March	TUE	13:15	14:15	JPN	Pervomaisky Ice Arena
		14:30	15:30	CHN	
		15:45	16:45	SUI	
		17:00	18:00	CAN	
		18:15	19:15	RUS	
		19:30	20:30	USA	

6 March	WED	08:00	08:30	SUI	Pervomaisky Ice Arena
		08:45	09:15	CAN	
		09:30	10:00	USA	
		10:15	10:45	RUS	
		12:30	15:00	CHN - JPN (10)	Pervomaisky Ice Arena
		16:00	18:30	CAN - SUI (11)	
		19:30	22:00	USA - RUS (12)	
		22:15	23:15	Directorate #3	Pervomaisky Ice Arena
7 March	THU	13:15	14:15	SUI	Pervomaisky Ice Arena
		14:30	15:30	JPN	
		15:45	16:45	CHN	
		17:00	18:00	USA	
		18:15	19:15	RUS	
		19:30	20:30	CAN	
8 March	FRI	08:00	08:30	CHN	Pervomaisky Ice Arena
		08:45	09:15	USA	
		09:30	10:00	CAN	
		10:15	10:45	RUS	
		12:30	15:00	JPN - SUI (13)	Pervomaisky Ice Arena
		16:00	18:30	USA - CHN (14)	
		19:30	22:00	RUS - CAN (15)	
		22:15	23:15	Directorate #4	Pervomaisky Ice Arena
9 March	SAT	14:45	15:45	SF#1 (H)	Arena Sever
		16:00	17:00	SF#1 (V)	
		17:15	18:15	SF#2 (H)	
		18:30	19:30	SF#2 (V)	
10 March	SUN	08:00	08:30	SF#1 (H)	Arena Sever
		08:45	09:15	SF#1 (V)	
		09:30	10:00	SF#2 (H)	
		10:15	10:45	SF#2 (V)	
		16:00	18:30	SF#1 (16)	Arena Sever
		19:30	22:00	SF#2 (17)	
		22:15	23:15	Directorate #5	Arena Sever
11 March	MON	08:00	08:30	Bronze (H)	Arena Sever
		08:45	09:15	Bronze (V)	
		09:30	10:00	Gold (H)	
		10:15	10:45	Gold (V)	
		16:00	18:30	BRONZE (18)	Arena Sever
		19:30	22:00	GOLD (19)	
		After Gold game		Medal Awarding Ceremony	Arena Sever

Ceremonies:

Medal Awarding Ceremonies will be held after the Gold Medal Game. For more information please refer to the chapter 5.10.

Trainings:

Training possibilities in Pervomaisky Ice Arena starts on the 23 February 2019.

General Technical Meeting (Team Captains Meeting)

The GTM – General Technical Meeting (Directorate #1) will be held on the 28 February at 19:30 in the Universiade Village.

At the first General Technical Meeting, the Head of Delegation or his/her representative shall confirm and sign the official list of competitors.

5.8. EQUIPMENT AND UNIFORMS

5.8.1. SKATER'S EQUIPMENT

Skaters' equipment consists of sticks, skates, protective equipment, and uniforms. All protective equipment, except gloves, helmets, and skates must be worn entirely underneath the uniform. Equipment must conform to safety standards and be used only to protect skaters, not to enhance or improve playing ability or to cause injury to an opponent. Full equipment, including helmets, must be worn properly during the pre-game warmup.

All personal equipment requirements are fully described in the IIHF Official Rule Book (section 4):

https://www.iihf.com/IIHFMvc/media/Downloads/Rule%20Book/IIHF_Official_Rule_Book_2018_Web_v2.pdf

5.8.2. ICE HOCKEY TEAM UNIFORMS

Ice Hockey Team Uniforms must follow the FISU Ice Hockey Uniform Guidelines which can be found in following website:

https://krsk2019.ru/uploads/shared/localized_documents/files/000/004/189/original/Uniform_guidelines_ice_hockey_bandy.pdf?1538017351

5.9. DOPING CONTROL

5.9.1. DOPING CONTROL

Doping Control will be carried out in accordance with the WADA World Anti-Doping Code and FISU regulations. Conditions for doping control procedures will be provided during the competitions at all sports venues.

5.9.2. LIST OF PROHIBITED SUBSTANCES

The actual list of prohibited substances and methods is defined in accordance with WADA international standards. National University Sports Federations will be responsible for ensuring that their delegations, namely athletes, are made aware of the actual copy of The Prohibited List. Ignorance of the Prohibited List contents will in no way constitute a valid excuse for any participant of the Winter Universiade violating valid anti-doping rules. For the WADA list of prohibited

substances and methods, please refer to the following website: www.wada-ama.org.

5.9.3. TESTING

The required number of samples will be selected during the competition and non-competition periods in accordance with the Test Distribution Plan developed by the Organising Committee under the supervision of the FISU CMI. During the Universiade, athletes can be tested at any time without prior notice. The testing will be conducted by Doping Control Officers (DCO) from an anti-doping organization accredited by WADA. Testing will be conducted under the supervision of the FISU Medical Committee. Doping samples will be sent to the WADA-accredited anti-doping laboratory. All results will be sent to the Chairman of the FISU Medical Committee and entered into the ADAMS system. In case of violation of Anti-Doping Rules, the responsibility for processing the results lies with the FISU Medical Committee. In case of setting a national record, doping testing of the athlete is carried out at the expense of his National University Sports Federation.

5.9.4. DOPING CONTROL STATIONS

Ten doping control stations are located at sports venues. The 11th doping control station is located in the Medical Centre of Universiade Village. All doping control stations will be marked with signs and the way to them will be shown by the signage. After the completion of the doping control procedure, all samples collected at each doping control station will be delivered to the central doping control station together with the necessary support documentation (doping control protocols) for further registration in the ADAMS system. All samples will be packaged and sent to the WADA accredited anti-doping laboratory in accordance with the international standards. All the information concerning the doping control programme during the Winter Universiade is confidential according to WADA and FISU requirements. When visiting a doping control station athletes are required to have accreditation cards.

Doping Control Stations for ice hockey athletes will be allocated at the Pervomaisky Ice Arena 1st floor and at the Arena Sever 1st floor

5.9.5. THERAPEUTIC USE EXEMPTIONS (TUE)

Universiade participants who require Therapeutic Use Exemption (TUE) must make an appropriate request to the National Anti-Doping Organization or International Sports Federation before participation in the Universiade. The World Anti-Doping Agency International Standard for TUE will be applied in this case. Every athlete who uses a substance or a method included in the List of prohibited substances is obliged to be in possession of a completed TUE form of the established standard from the moment of arriving until the departure from the Universiade Village after the Closing Ceremony of the Universiade.

If there is a need in the use of a prohibited substance or a prohibited method for medical reasons after the opening of the Winter Universiade, an athlete must submit a request for TUE to the FISU TUE Committee as a matter of urgency. The responsibility for completing the TUE form and submitting an application to the FISU TUE Committee lies with the delegation physician. If the delegation does not

have its own physician the athlete shall submit a request for TUE with the attachment of medical documentation confirming the fact of providing him/her with emergency medical treatment to the FISU TUE Committee.

5.9.6. CONTACT DETAILS

Head of the Anti-doping division	Maksim VEREVKIN Tel.: +7 923 377 2019 Email: m.verevkin@krsk2019.ru
----------------------------------	---

5.10. AWARDS AND MEDALS

5.10.1. MEDAL AWARDING CEREMONY

The Medal Awarding Ceremonies for women's ice hockey tournament will take place after the gold medal game (please refer to the chapter 5.7 for the schedule of the tournament)

The official languages for the Medal Awarding Ceremonies will be Russian and English.

The medallists of each event must attend the Medal Awarding Ceremony. In case a medallist is unable to attend, the medal is delivered to an official of the relevant delegation, which shall wear the uniform of the delegation to take part in the ceremony. The official must not mount the podium but walk in front of it and take the medal in his/her hands.

In case all the winners cannot be present, the ceremony is postponed.

During the Medal Awarding Ceremony:

- The athletes are not allowed to take any national flag or any other national, cultural or religious symbol on the podium;
- The national flags of the first three (3) medallists will be raised and the only anthem played will be the FISU anthem, the Gaudeamus Igitur;
- During the playing of the FISU anthem and the raising of the flags, they shall face the flags and conduct themselves in a dignified manner at all times. No national anthem is played during the ceremony;
- Athletes are expected to take off their caps when receiving the medal and keep it in hand throughout the ceremony (i.e. playing of the FISU anthem and raising of the flags);
- Athletes, authorities and accompanying persons are required to face the flags while they are being raised and the FISU anthem is being played.
- The athletes must wear their delegation's approved uniform or the uniform with which they competed if the ceremony takes place right after the end of the competition and at the same venue.
- After the medals are awarded athletes must remain in the awarding area for photo shooting on the podium with medals.
- In order to take the best photo during the shooting athletes should follow the recommendations of photographers.
- After the Medal Awarding Ceremony and the official shooting on the podium the medallists/coaches are invited to the press conference. Athletes must bring their medals to the press conference.

5.10.2. DIPLOMA OF HONOURS

The athletes ranked one (1) to eight (8) will receive a Diploma of Honours. For team events, each team member will receive a personal diploma of honour mentioning his/her name and the team ranking. Diplomas of honours are not distributed to winners at the Medal Awarding ceremony. They are handed to the Head of Delegation or an appointed representative of each delegation in the Universiade Village at a later time. If an athlete or team is disqualified, the diploma(s) shall be returned to FISU.

5.11. PRESS INTERVIEWS

Venue Press Centres for media representatives are organised at all Winter Universiade 2019 competition sites.

At the end of a competition, all athletes must leave the field of play through the mixed zone where brief interviews will be held. Every athlete/coach should be ready to communicate with media representatives upon their request. In case of cold weather, team representatives should give an athlete a warm jacket or a blanket prior to entering the mixed zone.

After the award ceremony, all competition medallists and/or their coaches will be invited to participate in the post-competition press conference. A volunteer from the Venue Press Centre will invite and then accompany athletes/coaches to the press conference room. Athletes must bring their medals to the press conference.

Simultaneous interpretation in English and Russian will be provided during the press conference. If a press conference participant does not speak either of these languages, they should invite their team interpreter to the press conference.

To accommodate individual interviews, special rooms in the Main Press Centre and Universiade Village will be provided. Accredited journalists and delegation attachés may use these rooms only after making an interview arrangement with an athlete or a coach.

5.12. SPORT INFORMATION SERVICES

5.12.1. ON-LINE SPORT INFORMATION SERVICES

Internet address:	https://krsk2019.ru/
-------------------	---

5.12.2. SPORT INFORMATION CENTER (SIC) AT THE UV

The Sport Information Center is located on the second floor of the SibFU Congress Hall in the International Zone at the Universiade Village and provides the following information/services to delegations during the Winter Universiade Krasnoyarsk 2019:

- Distribution of Technical Handbooks
- Competition schedule
- Training schedule
- Technical meeting information
- Distribution of daily sport results

The Sport Information Center will operate between 07:00 to 23:00 from 23 February to 14 March 2019.

5.12.3. SPORT INFORMATION AT THE VENUE

A Sport Information Desk (SID) will be located at each venue, will distribute most recent information related to the competitions to the SID and receive requests from the team representative(s).

The Sport Information Desk will operate from 23 February to 12 March 2019 in accordance with the competitions and training schedules (2 hours before and after the events).

5.12.4. SPORTS INFORMATION DISTRIBUTION

Information	Online	Venue	UV SIC	ITO Hotel
Competition Schedule	+	+	+	+
Start list / Result list	+	+	+	+
Change to Schedules	+	+	+	+
Special announcements and urgent notice		+	+	+
Games Video Recording		+	+	
Weather Information	+	+	+	+
Medal table	+			
Technical Handbook	+		+	+
Regulations for the WU2019	+			
Non sport information (transport, catering, etc)		+	+ (MIC)	+
Answer and follow up to teams questions		+	+	+

6. SERVICE INFORMATION

6.1. TEAM SERVICES

6.1.1. TEAM SPORTS ATTACHES

An additional attaché will be assigned to each Ice Hockey team for the whole period of their stay in Krasnoyarsk. Team sport attachés will work on a flexible schedule, coordinated by the team leader/coach of the team.

Team sport attachés' responsibilities generally are as follows:

- Assistance during arrivals and departures of the Delegations
- Assistance with accreditation procedure, UV check-in and check-out procedures
- Assistance with navigation in the Universiade Village and at the WU2019 venues, in the city of Krasnoyarsk
- Assistance to the team at competition and training venues, UV, SIC and sport information desks with team's daily tasks management and solving the arising issues
- Providing information on competition and training schedule, all the changes in the schedule
- Assistance in ordering transportation for the team
- Accompany the team to other WU2019 venues, the city of Krasnoyarsk - on request
- Language support including unofficial consecutive interpreting
- Information and communication support

Attaches are not obliged to follow the instructions of the team members not related to participation in the Universiade. The transfer of documents, money and other valuables to attaches is not permitted.

6.1.2. TEAM SERVICE STANDART

All teams will be provided with laundry services and Skates Sharpening services as well as towels, ice and F&B services. Moreover, after each game teams will be able to get USB stick with games record.

6.2. RADIO FREQUENCY CONTROL

6.2.1. GENERAL INFORMATION

At the sport venues of the Winter Universiade Krasnoyarsk 2019 for all participants there will be restrictions applied to the use of radio electronic high frequency devices (hereinafter, REDs), namely: radio stations, Wi-Fi access points, radio microphones and other wireless equipment.

All the users of REDs have to get a permission to use radio equipment. Before using REDs, one has to have it tested and marked with special labels.

Information on the location of the testing and marking points and the full procedure of getting a permit to use of REDs is available at the Winter Universiade Krasnoyarsk 2019 official website: <https://krsk2019.ru/en/pages/radio equip>.

At the venue entrance, all non-marked radio electronic devices will be placed into special lockers and will be returned to the owners upon exiting the venue.

6.2.2. CONTACT DETAILS

Head of Radio Frequency Planning and Control Division	Timofey SUKHANOV Email: t.sukhanov@krsk2019.ru
Head of Communication Organisation Department	Irina LUCHKO Email: i.luchko@krsk2019.ru

6.3. ACCREDITATION

Location of the Main Accreditation Centre:

The Main Accreditation Center is located in the International zone of the Universiade Village.

IMPORTANT: No athlete will be allowed to attend official training or competition without the Accreditation Card. Temporary cards do not allow athletes to take part to official trainings and competitions.

6.4. TRANSPORTATION

6.4.1. TRANSPORTATION SYSTEM FOR ATHLETES AND TEAM OFFICIALS (TA)

The transportation system for athletes and official delegation members will provide transport services from 23 February to 14 March 2019.

Routes in the transportation system for athletes and official delegation members are marked with the abbreviation "TA" (Transport Athletes). Vehicles are being equipped with placards indicating route number for the individual, team sports and spectating athletes.



Example of a bus / minibus placard

6.4.2. TRANSPORTATION SCHEDULE FOR ICE HOCKEY (WOMEN)

For transportation of team sports athletes (Ice Hockey, Bandy, Curling, Synchronized Skating) each team will be provided with designated vehicle during the competitions. To book a vehicle for a team and specify the details, the team

manager needs to confirm the request at the transportation desk in the Main Information Centre not later than 20:00 the day before. The team attache will be ready to provide any assistance needed.

Route number	Sport	Route	Distance to UV	Time
TA 009	Ice Hockey (W)	Universiade Village – Pervomaisky Ice Arena	19,9 km	42 min
		Universiade Village – Arena Sever	13 km	30 min

Detailed information will be available in WU2019 Transportation Guide.

6.4.3. TRANSPORTATION SERVICES FOR SPECTATING ATHLETES AND OFFICIALS (TS)

Special shuttle buses which run between the Universiade Village and the competition venues are provided for the spectating athletes from 1 to 12 March 2019.

Transport for spectating athletes will operate in accordance with the schedule. All athletes, regardless of their delegation and sport, will have access to the bus transportation systems for athletes-spectators.

Following routes will be used for Spectating athlete transportation services:

Route number	Route	Sport
TS 001	Sopka Cluster - Biathlon Academy Multifunctional Complex	Snowboard / Freestyle Skiing / Biathlon
TS 002	Raduga Cluster	Cross-Country Skiing / Ski Orienteering
TS 003	Ivan Yarygin Sports Palace	Curling
TS 004	Arena Sever Multifunctional Complex	Short Track Speed Skating / Ice Hockey W*
TS 005	Crystal Ice Arena	Ice Hockey M
TS 006	Yenisei Ice Stadium / Pervomaisky Ice Arena	Bandy / Ice Hockey W*
TS 007	Platinum Arena Ice Arena	Figure Skating / Synchronized Skating
TS 008	Funpark Bobrov Log	Alpine Skiing

* Pervomaisky Ice Arena will host Ice Hockey W competitions from 1 to 8 March 2019, the spectating athletes route is TS 006. On 10 & 11 March 2019 the route will be changed to TS 004 as the competitions will be held at Arena Sever.

Detailed timetable will be available in WU2019 Transportation Guide.

6.5. FOOD AND BEVERAGES

6.5.1. UV MAIN DINING HALL

The Main Dining Hall offers catering services based on a daily nutrition (breakfast, lunch, dinner, late dinner). Opening hours of the Main Dining Hall are from 5:00 am to 1:00 am, during Universiade Village opening period from 23 February till 14 March 2019.

6.5.2. F&B SERVICES AT THE COMPETITIONS VENUES

At the competition venues, refrigerators with bottled water at room temperature, soft drinks and isotonic, dispensers for hot drinks, a buffet table with fruits, muesli, bars, nuts and dried fruits will be provided in athletes lounges/changing rooms.

6.6. MEDICAL SERVICES

6.6.1. GENERAL INFORMATION

The Organising Committee will provide all accredited persons with free emergency medical care (diagnosis/treatment and local transportation) of all injuries and illnesses directly and indirectly related to the concerned FISU Event. This obligation will begin from the day of the opening of the Universiade Village until two (2) days following the closing ceremony (23 February – 14 March 2019).

For the secondary or non-emergency treatment, participants must have their own appropriate insurance.

6.6.2. MEDICAL CENTRE AT THE UNIVERSIADE VILLAGE

In the Universiade Village a medical centre for provision of primary health care and specialized medical care will operate from 8 to 22 hours daily, providing emergency care 24 hours a day.

To provide an emergency medical care and medical evacuation to the dedicated hospitals on the territory of the medical centre, the ambulance cars of B and C classes are provided with a general and specialized ambulance teams.

Universiade Village Medical Centre will provide medical services to accredited client groups from 23 February to 14 March 2019.

Medicines prescribed by the physician of the medical centre in a single dose on the day of appeal will be provided free of charge at the pharmacy 24 hours a day, 7 days a week. Orthopaedic appliances (canes, crutches) and wheelchairs for the displacement of injured patients, if required, will be given for temporary use. On the territory of the Universiade Village it is planned to place automatic electronic defibrillators within their strategic accessibility.

Full information will be available in WU2019 Medical Guide.

6.6.3.MEDICAL SERVICES FOR ATHLETES AT THE SPORTS VENUES

Medical Aid Station

At the sports venues of the Winter Universiade 2019 an athlete medical station (AMS) is provided. AMS provides emergency and specialized medical aid to athletes. It has a doctor in sports medicine, a nurse, and a doctor-volunteer.

AMS working schedule: 1 hour before the start of the competition/official training and within 1 hour after the end of the competition/official training. Medical aid stations have all the required medical equipment, medicines and medical products to provide the set scope of medical aid.

Mobile medical teams

Mobile medical teams (MMT) for emergency medical aid at the field of play are formed in accordance with the International requirements for the sports held.

The team comprises: sports medicine physician, a nurse, and a doctor-volunteer. MMTs are located in a close proximity of the ice rink. MMTs provide the required standard of equipment for emergency medical support

Working schedule of MMT: 1 hour before the start of the competition/official training and within 1 hour after the competition/official training.

Ambulance cars

During the competition, all sports venues are provided with at least two ambulance cars of B and C classes with general and specialized teams. Ambulance teams are located in the close proximity to the ice rink and ambulance cars are parked at the nearest exit, through which medical evacuation is carried out.

6.6.4. CONTACT DETAILS

Head of Medical Care Department	Maxim SUVOROV Tel: +7 923 549 2019 Email: m.suvorov@krsk2019.ru
Head of Medical Care Division	Elena MIKHAILENKO Tel: +7 933 329 2019 Email: e.mikhaylenko@krsk2019.ru

7. OC CONTACTS

ANO "Directorate Krasnoyarsk 2019"	19 Mira Av., build. 1, Krasnoyarsk 660049 007 (391) 291-8080 conference@krsk2019.ru
Delegation services	delegation.services@krsk2019.ru
Accreditation	acr02@krsk2019.ru
Department of Sports	sports@krsk2019.ru
Sports Entries	sport.entries@krsk2019.ru
Arrivals and departures / Transportation	a-d@krsk2019.ru

8. APPENDICES

8.1. 29TH WINTER UNIVERSIADE KRASNOYARSK 2019 COMPETITION SCHEDULE

Version: 01.02.2019 Subject to change

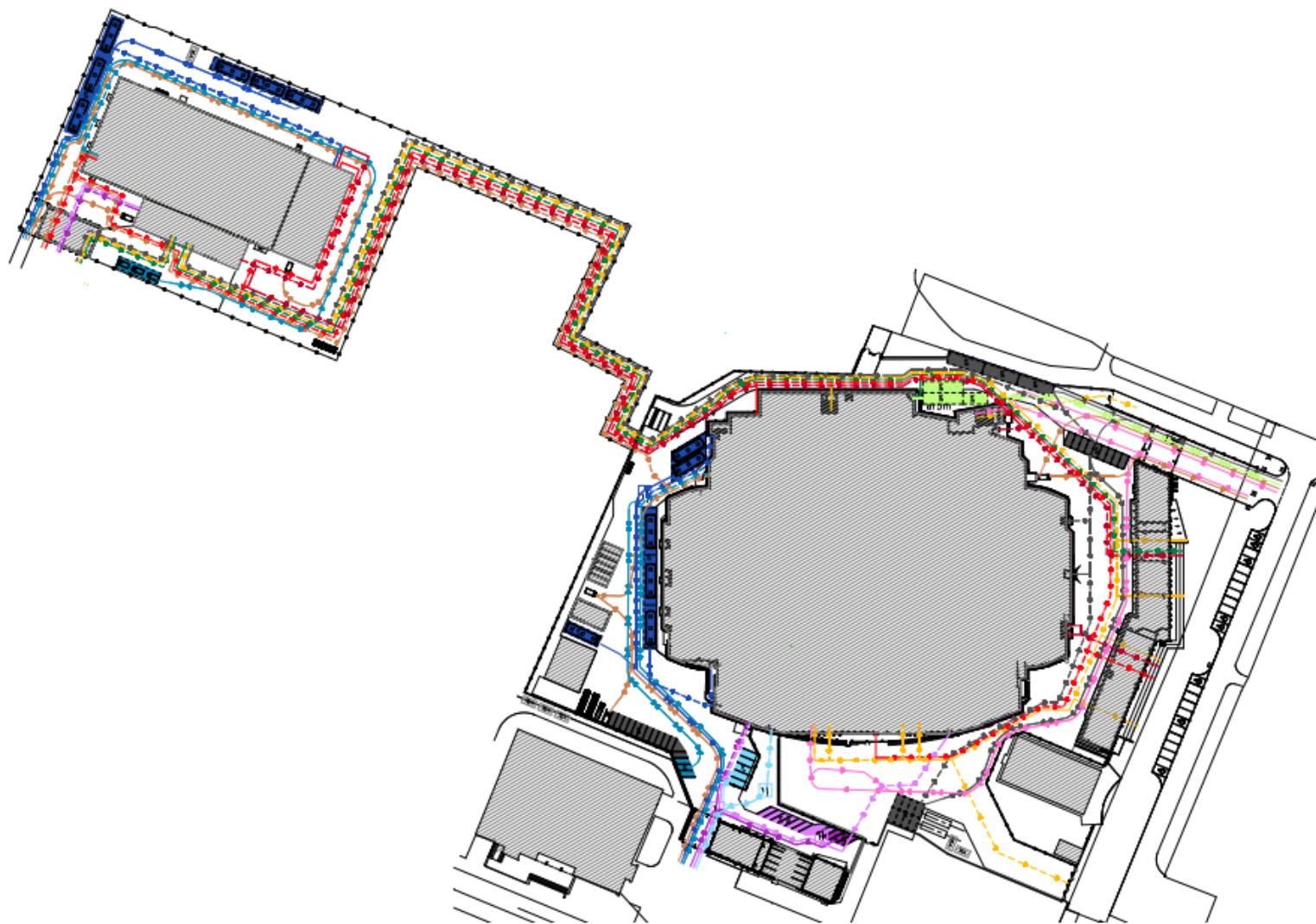


	FRI March 1	SAT March 2	SUN March 3	MON March 4	TUE March 5	WED March 6	THU March 7	FRI March 8	SAT March 9	SUN March 10	MON March 11	TUE March 12	#Events
	CEREMONIES Platinum Arena FISU WORLD CONFERENCE Grand Hall Siberia	Platinum Arena 20:19 Opening Ceremony	Platinum Arena 14:00 «WU 2019» Show		Grand Hall Siberia FISU World Conference	Grand Hall Siberia FISU World Conference	Grand Hall Siberia FISU World Conference					Platinum Arena 20:00 Closing Ceremony	
SNOW SPORTS	ALPINE SKIING Funpark Bobrov Log	10:00-12:00 Official Free Skiing on Super-G course	Super-G W/M 10:30 Super-G W 13:00 Super-G M	Alpine Combined W 10:00 AC - SG 13:30 AC - SL	Alpine Combined M 10:00 AC - SG 13:30 AC - SL	Reserve day	Giant Slalom W 10:00 1 st run 13:00 2 nd run	Giant Slalom M 10:00 1 st run 13:00 2 nd run	Parallel Nations Team Event 11:00	Slalom W 10:00 1 st run 13:00 2 nd run	Slalom M 10:00 1 st run 13:00 2 nd run	Reserve day	9
	SNOWBOARD Sopka Cluster	Snowboard Cross 09:30-11:00 Official Training M 11:30-13:00 Official Training W	Snowboard Cross W/M 09:30-10:10 Off. Training 10:30-12:30 Qualifications (Round Robin) 13:30-14:30 SF & Finals	Parallel Giant Slalom 09:00-11:00 Unofficial Training 13:30-15:30 Unofficial Training	Parallel Giant Slalom W/M 09:30-11:30 Qualifications 13:00-15:00 Finals	Parallel Slalom W/M 09:30-11:30 Qualifications 13:00-15:00 Finals Halfpipe 19:00-21:00 Off. Training	Reserve day	Slopestyle 11:30-13:30 Off. Training Halfpipe W/M 16:30-17:30 Off. Training 17:45-19:25 Qualifications 20:00-20:45 Off. Training 21:00-22:00 Finals	Slopestyle 11:30-13:30 Off. Training	Slopestyle W/M 09:00-09:45 Off. Training 10:00-12:00 Qualifications 14:00-15:00 Finals	Reserve day		10
	FREESTYLE SKIING Sopka Cluster	Aerials 16:30-19:00 Official Training	Aerials 12:30-15:00 Official Training	Aerials W/M 14:00-16:00 Off. Training 16:30-18:30 Qualifications 19:30-20:30 Finals	Slopestyle 11:00-13:30 Off. Training Mixed Team Aerials 16:00-17:30 Off. Training 18:00-19:00 Qualifications 19:30-20:30 Finals	Slopestyle 11:00-13:30 Official Training	Slopestyle W/M 09:30-10:30 Off. Training 11:00-14:00 Qualifications 15:30-16:30 Finals	Moguls 16:30-19:00 Official Training	Ski Cross 09:00-13:00 Off. Training Moguls W/M 14:30-16:30 Off. Training 17:00-19:00 Qualifications 19:30-21:00 Finals	Ski Cross 09:00-13:00 Off. Training Dual Moguls W/M 15:00-16:30 Off. Training 17:00-18:45 Qualifications 19:30-20:30 Finals	Ski Cross W/M 09:00-10:00 Off. Training 10:30-11:30 Qualifications 11:40-12:55 Round Robin 13:30-14:30 SF & Finals	Reserve day	11
	BIATHLON Blathlon Academy	Unofficial Training 10:00-12:00 W 13:00-15:00 M	Individual Official Training 10:00-12:00 W 13:00-15:00 M	Individual W/M 10:00-10:50 Zeroing W 11:00-12:45 IND 15km W 13:00-13:50 Zeroing M 14:00-15:45 IND 20km M	Sprint Official Training 10:00-12:00 W 13:00-15:00 M	Sprint W/M 10:00-10:50 Zeroing W 11:00-12:45 SP 7.5km W 13:00-13:50 Zeroing M 14:00-15:10 SP 10km M	Pursuit W/M 10:15-10:45 Zeroing W 11:00-11:50 PUR 10km W 13:15-13:45 Zeroing M 14:00-14:50 PUR 12.5km M	Unofficial Training 10:00-12:00	Single Mixed Relay 6km W + 7.5km M 13:15-13:45 Zeroing 14:00-14:45 SMR	Mass Start W/M 10:15-10:45 Zeroing W 11:00-11:45 MS 12.5km W 12:15-12:45 Zeroing M 13:00-13:45 MS 15km M	Reserve day		9
	CROSS-COUNTRY SKIING Raduga Cluster	Unofficial Training 10:00-13:00	Individual (C) 10:00-13:00 Official Training W/M	Individual (C) W/M 08:00-09:55 Off. Training W 10:00-10:45 5km (C) W 10:45-11:25 Off. Training M 11:30-12:45 10km (C) M Pursuit (F) 14:00-15:30 Official Training W/M	Pursuit (F) W/M 08:00-09:55 Off. Training W 10:00-10:45 5km (F) W 10:45-11:25 Off. Training M 11:30-13:00 10km (F) M	Sprint (F) 10:00-13:00 Official Training W/M	Sprint (F) W/M 08:00-09:55 Off. Training W/M 10:00-11:00 Qualifications W/M 11:00-12:15 Off. Training W/M 12:30-14:00 Finals W/M	Mixed Team Sprint (C) 10:00-13:00 Official Training	Mixed Team Sprint (C) 08:00-09:55 Off. Training 10:00-11:00 Semi-Finals 11:00-11:55 Off. Training 12:00-12:30 Final Relay 16:00-18:00 Official Training W/M	Relay W/M 08:00-09:55 Off. Training W 10:00-11:00 3x5km (C+FF) W 11:00-11:55 Off. Training M 12:00-14:00 4x7.5km (CC+FF) M	Mass Start (F) 10:00-11:30 Official Training W 09:30-11:25 Official Training 11:30-13:00 15km (F) W Mass Start (F) 13:00-15:00 Official Training M	Mass Start (F) 09:30-11:25 Official Training 11:30-13:30 30km (F) M	11
	SKI ORIENTEERING Raduga Cluster	Unofficial Training 14:00-16:00	Sprint / Pursuit 15:30-17:30 Official Training M/W	Sprint M/W 15:00-16:30 M 16:45-17:30 W	Pursuit M/W 15:00-16:00 M 16:15-17:15 W	Sprint Relay 15:00-17:00 Official Training	Sprint Relay 16:00-17:30	Unofficial Training 13:00-15:00	Middle Distance 15:00-17:00 Official Training M/W	Middle Distance M/W 14:00-15:30 M 16:00-17:30 W	Reserve day		7
ICE SPORTS	CURLING Ivan Yarygin Sports Palace	08:15-15:15 Official Practice	09:00 w1 14:00 M1 19:00 w2	09:00 M2 14:00 w3 19:00 M3	09:00 w4 14:00 M4 19:00 w5	09:00 M5 14:00 w6 19:00 M6	09:00 w7 14:00 M7 19:00 w8	09:00 M8 14:00 w9 19:00 M9	09:00 Playoff Games M/w (3 v 6) / (4 v 5) 16:00 Semi Finals M/w	09:00 Medal Games M 14:00 Medal Games w			2
	ICE HOCKEY Men Crystal Ice Arena	09:00 LAT-SUI (1) 12:30 HUN-JPN (2) 16:00 CZE-USA (3) 19:30 SVK-RUS (4)	08:30 SUI-SWE (5) 11:45 CAN-GBR (6) 15:00 LAT-KAZ (7)	12:30 USA-HUN (8) 16:00 CZE-SVK (9) 19:30 RUS-JPN (10)	12:30 GBR-SUI (11) 16:00 CAN-LAT (12) 19:30 KAZ-SWE (13)	12:30 CZE-HUN (14) 16:00 SVK-JPN (15) 19:30 RUS-USA (16)	12:30 CAN-SUI (17) 16:00 LAT-SWE (18) 19:30 KAZ-GBR (19)	12:30 USA-SVK (20) 16:00 HUN-RUS (21) 19:30 JPN-CZE (22)	09:00 SVK-HUN (23) 12:30 GBR-LAT (24) 16:00 SWE-CAN (25) 19:30 SUI-KAZ (26)	09:00 JPN-USA (27) 12:30 SWE-GBR (28) 16:00 KAZ-CAN (29) 19:30 RUS-CZE (30)	16:00 SF#1 (31) 19:30 SF#2 (32)	11:00 Bronze (33) 15:00 Gold (34)	1
	ICE HOCKEY Women Pervomaisky Ice Arena Arena Sever	Pervomaisky 12:30 JPN-USA (1) 16:00 CHN-CAN (2) 19:30 SUI-RUS (3)	Pervomaisky 12:30 CAN-JPN (4) 16:00 USA-SUI (5) 19:30 RUS-CHN (6)	Pervomaisky 12:30 CAN-USA (7) 16:00 SUI-CHN (8) 19:30 RUS-JPN (9)	Pervomaisky 12:30 CHN-JPN (10) 16:00 CAN-SUI (11) 19:30 USA-RUS (12)	Pervomaisky 12:30 JPN-SUI (13) 16:00 USA-CHN (14) 19:30 RUS-CAN (15)			Arena Sever 16:00 SF#1 (16) 19:30 SF#2 (17)	Arena Sever 16:00 Bronze (18) 19:30 Gold (19)			1
	SHORT TRACK Arena Sever	Unofficial Training 09:00-15:00	Official Training 09:00-20:00	14:00 500m W/M Followed by Heats 3000m Relay W Heats 5000m Relay M	14:00 500m W/M Followed by SF 3000m Relay W SF 5000m Relay M	14:00 1000m W/M Followed by F 3000m Relay W F 5000m Relay M							8
	FIGURE SKATING Platinum Arena Rassvet Ice Palace (practice ice rink)		Rassvet Ice Palace Unofficial Practice	Rassvet Ice Palace Unofficial Practice	Official Practice	Pairs 14:30 Short Program Men 17:00 Short Program	Ice Dance 13:00 Rhythm Dance Pairs 16:00 Free Skating Men 19:00 Free Skating	Syn. Skating 13:00 Short Program Ladies 14:00 Short Program Ice Dance 19:30 Free Dance	Syn. Skating 10:45 Free Skating Ladies 12:00 Free Skating Exhibition 19:00 EXH				5
	BANDY Women Yenisei Ice Stadium	11:00 SWE-USA (1) 14:00 RUS-NOR (2)		10:00 NOR-USA (3) 13:00 RUS-SWE (4)	13:00 SWE-NOR (5)	13:00 USA-RUS (6)	10:00 SF#1 (7) 13:00 SF#2 (8)	15:00 Bronze (9) 19:00 Gold (10)					1
	BANDY Men Yenisei Ice Stadium	17:00 SWE-NOR (1) 20:00 RUS-KAZ (2)	11:00 FIN-SWE (3) 14:00 RUS-BLR (4)	16:00 BLR-NOR (5) 19:00 FIN-KAZ (6)	16:00 SWE-KAZ (7) 19:00 NOR-RUS (8)	16:00 KAZ-NOR (9) 19:00 BLR-FIN (10)	16:00 SWE-BLR (11) 19:00 FIN-RUS (12)	16:00 NOR-FIN (13) 19:00 KAZ-BLR (14)	12:00 RUS-SWE (15)	11:00 5-6 place (16) 15:00 SF#1 (17) 19:00 SF#2 (18)	15:00 Bronze (19) 19:00 Gold (20)		1
Awarding Ceremonies			8	10	7	12	6	6	8	12	5	2	76

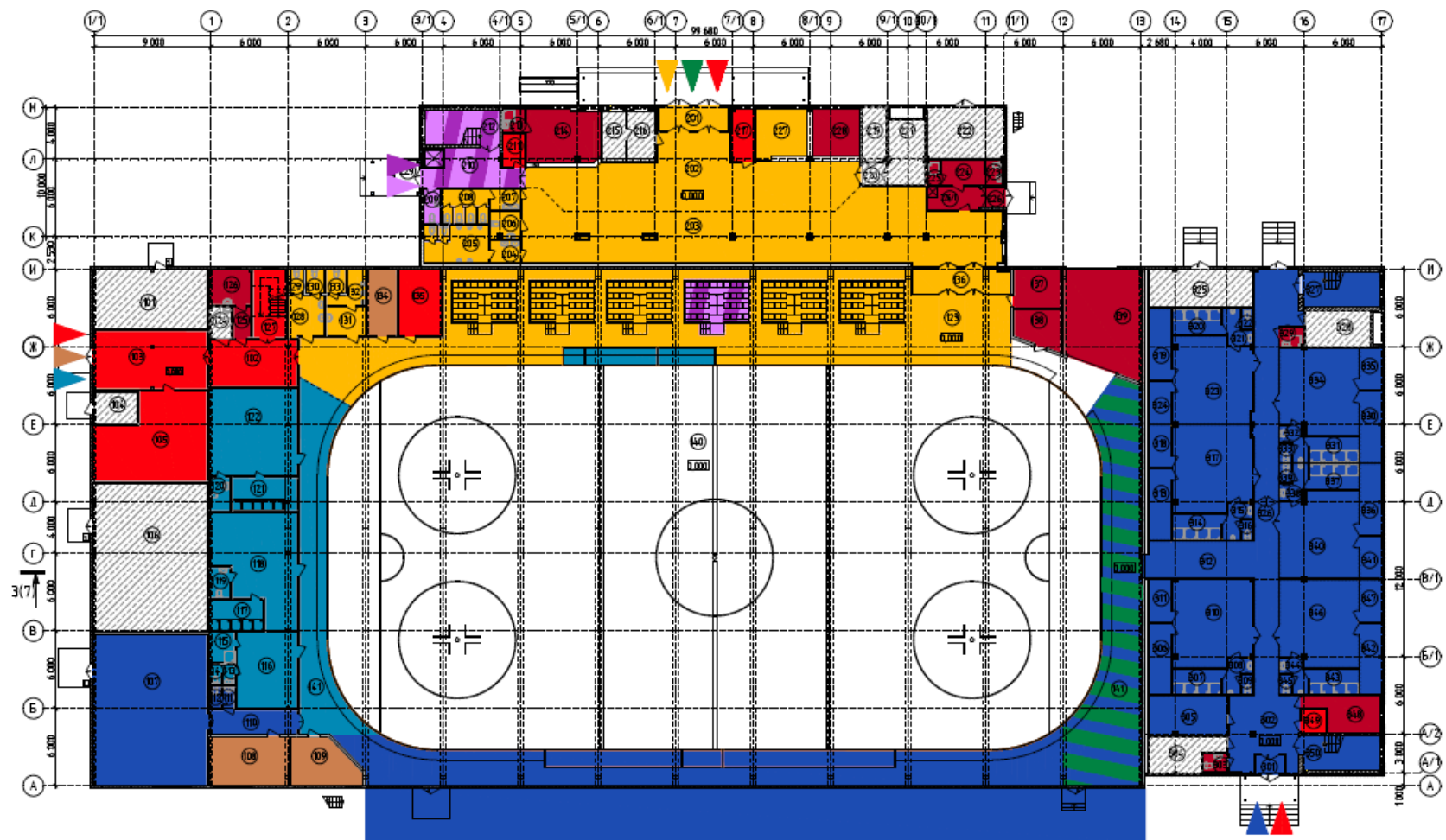
All Medal Awarding Ceremonies will take place at the venue at the end of the competition accordingly to the detailed schedule by sport.

8.2. VENUE LAYOUTS

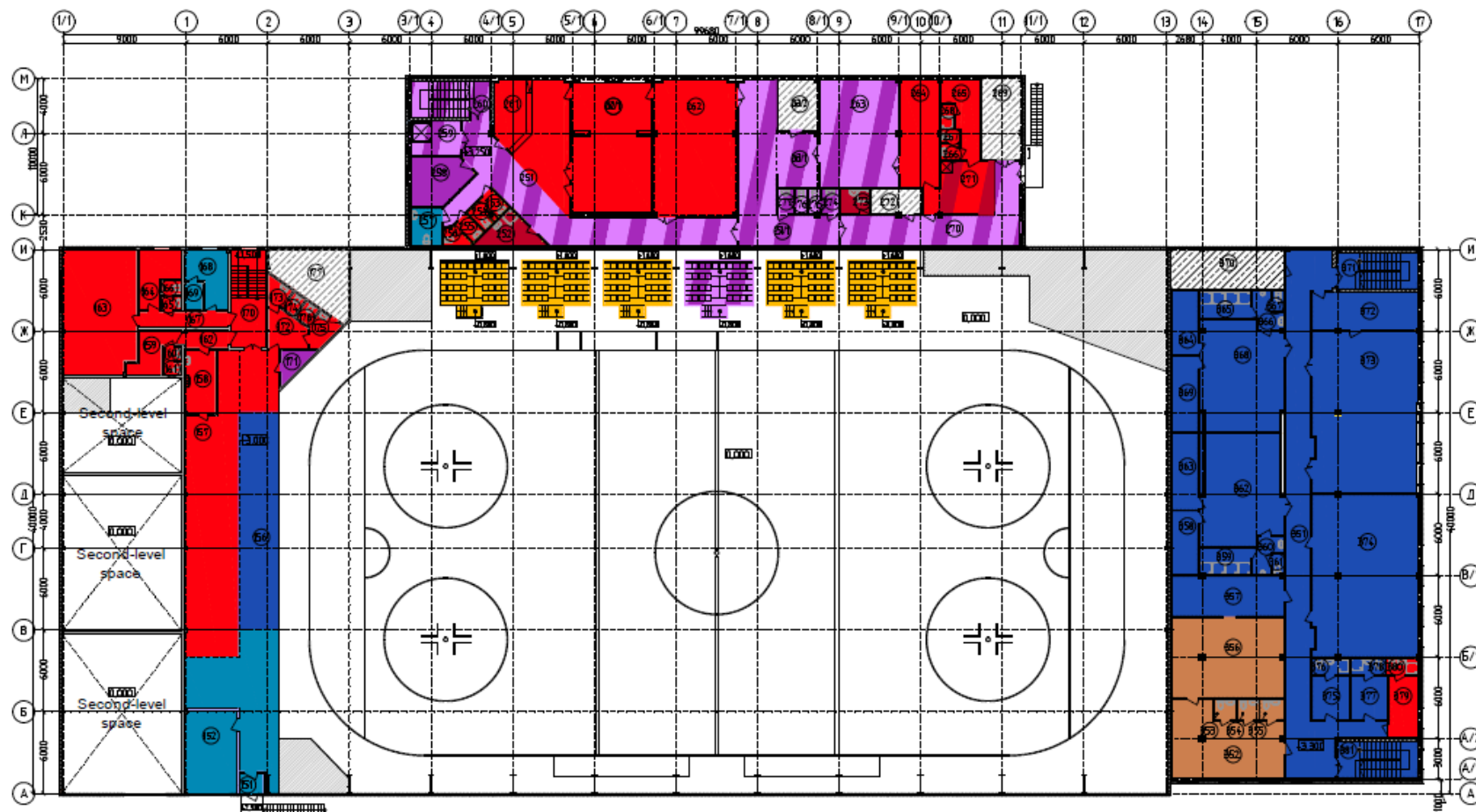
8.2.1. PERVOMAISKY ICE ARENA GENERAL LAYOUT



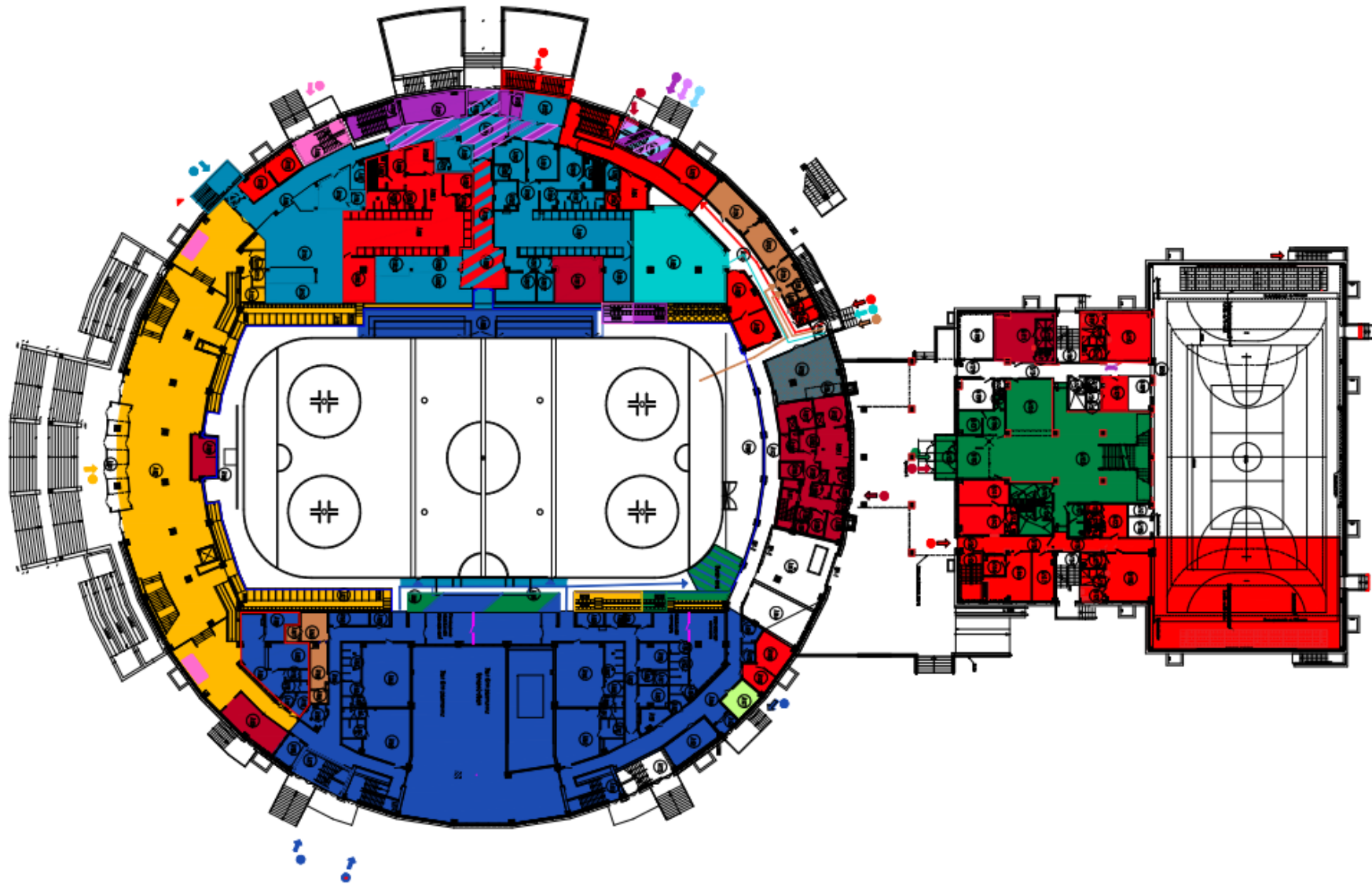
8.2.2.PERVOMAISKY ICE ARENA 1ST FLOOR



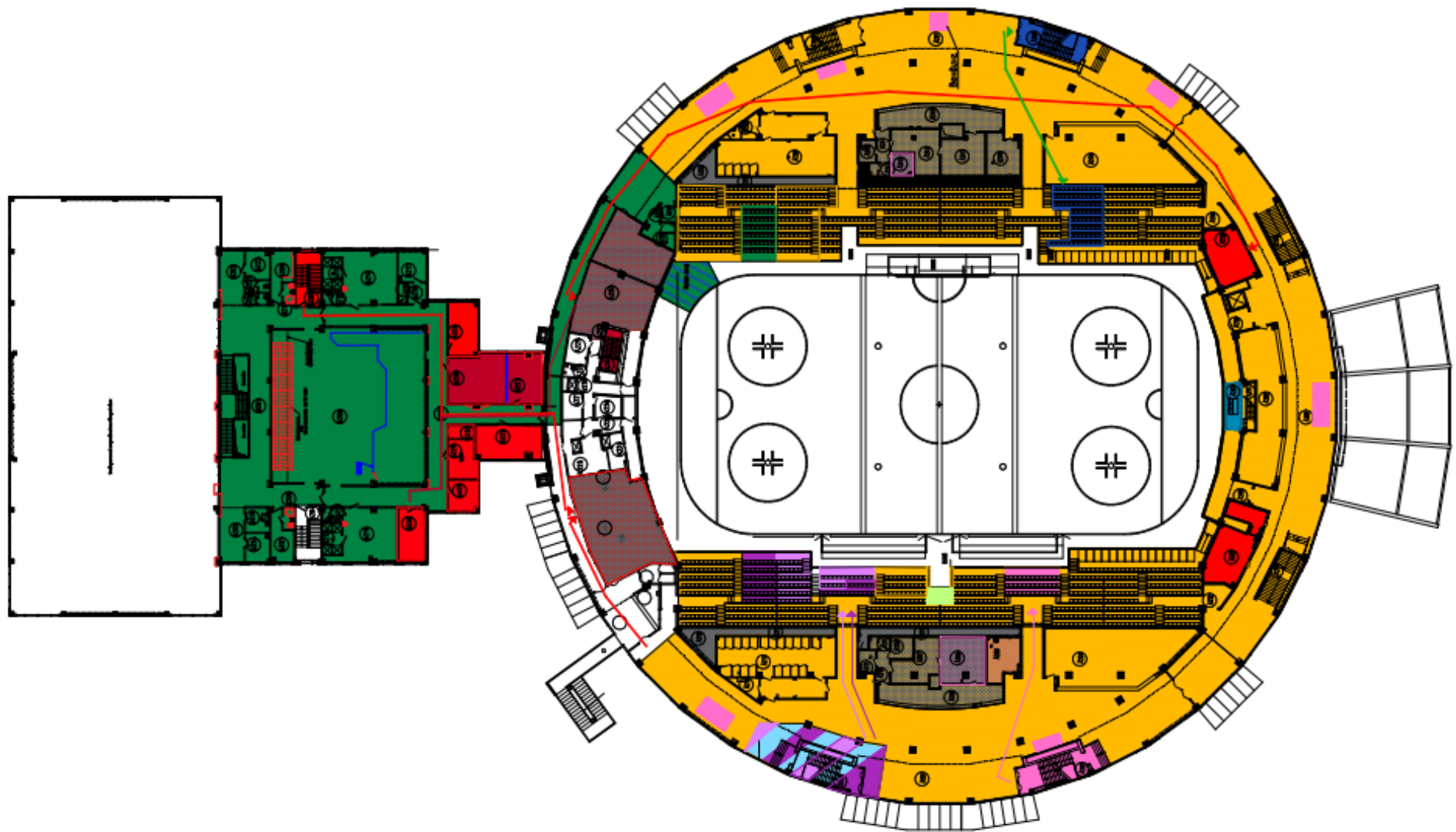
8.2.3.PERVOMAISKY ICE ARENA 2ND FLOOR



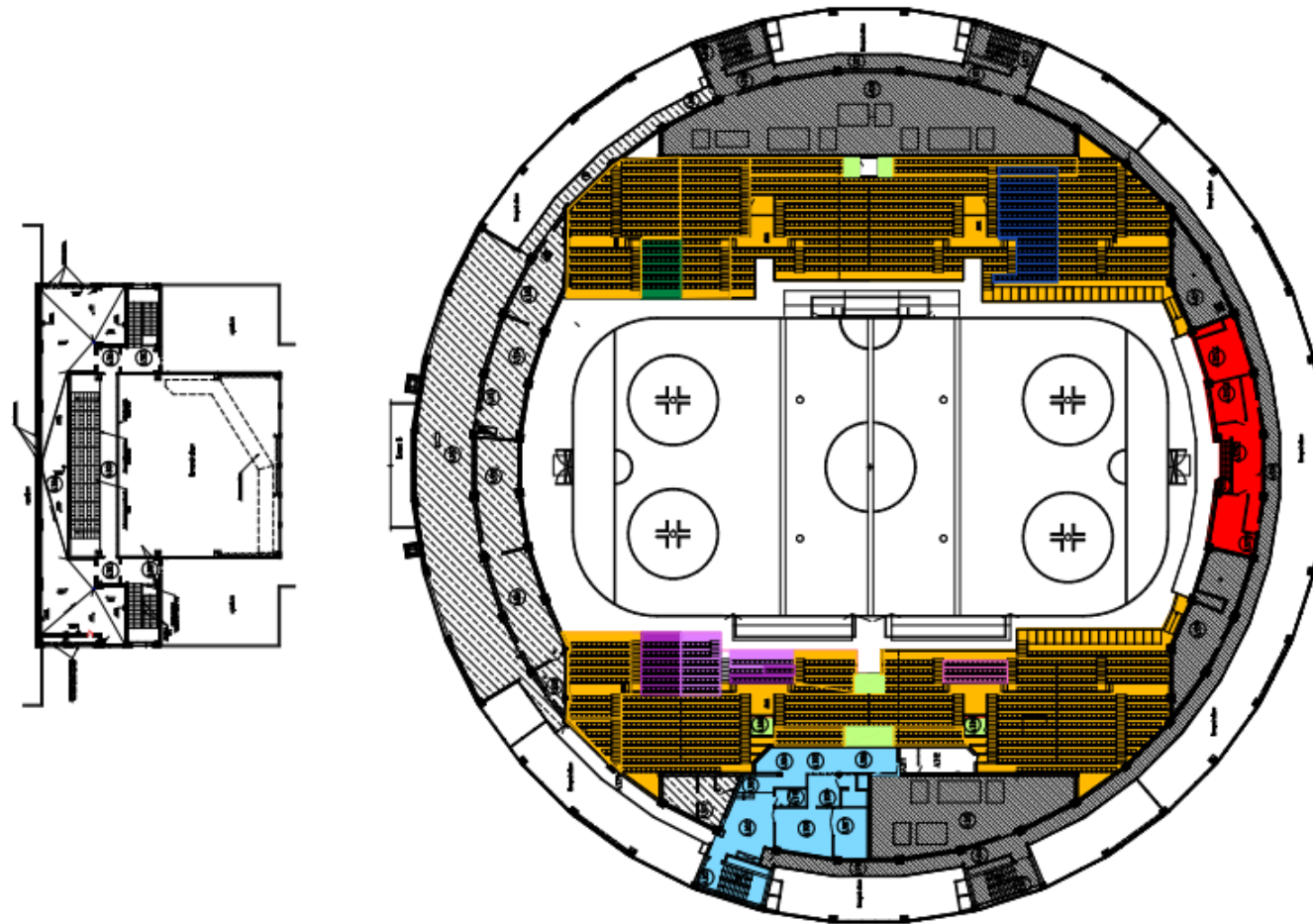
8.2.4. ARENA SEVER 1ST FLOOR



8.2.5.ARENA SEVER 2ND FLOOR



8.2.7.ARENA SEVER 3RD FLOOR



8.3. UNIVERSIAD VILLAGE MAP

1 Main Operations Centre
Главный операционный центр

INTERNATIONAL ZONE МЕЖДУНАРОДНАЯ ЗОНА

2 Main Accreditation Centre
1st floor Main Accreditation Centre / Bank / ATM / Meeting Rooms
2nd and 3rd floor Meeting Rooms / Interview Room
Главный аккредитационный центр
1й этаж: Главный аккредитационный центр / Банк / Банкомат / Номиналы встреч делегаций
2й и 3й этаж: Номиналы встреч делегаций/Номиналы для интервью

3 Congress-hall
2nd floor Main Information Centre / Sports Information Centre /
Travel Agency / Ticket Office / Lost&Found / Universiade Museum
3rd floor HOD Meeting Hall
Конгресс-зал
2й этаж: Главный информационный центр / Спортивный информационный центр / Туристическое агентство /
Билетный офис / Бюро находок / Музей Универсиады
3й этаж: Зал встреч Глав делегаций

5 Medical Centre / Doping Control / Pharmacy
Медицинский центр / Допинг контроль / Аптека

RESIDENTIAL ZONE ЖИЛАЯ ЗОНА

4 Dining Hall
Столовая

6 Service-hall
1st floor Fitness Centre / Business Centre / Souvenir Shop/
Post Services / Barber Shop / Flowers Shop / Lounge Zone
2nd floor Fitness Centre / Meeting Rooms
3rd and 5th floor Meeting Rooms
4th and 6th floor Religious Centre
Сервис-холл
1й этаж: Фитнес-центр / Бизнес-центр / Сувенирный магазин/
Почтовое отделение / Салон красоты / Цветочный магазин / Лайф-зона
2й этаж: Фитнес-центр / Номиналы встреч делегаций
3й и 5й этаж: Номиналы встреч делегаций
4й и 6й этаж: Центр религии

7 Accommodation for Delegations / Delegation Offices / Medical Rooms
Размещение атлетов / Офисы делегаций / Медицинские комнаты

7.1 Lounge Zone / Souvenir Shop
Лайф-зона / Сувенирный магазин

7.2 Grocery Store / ATM / Dry Cleaning / Lounge Zone / Tailors Shop
Супермаркет / Банкомат / Химчистка / Лайф-зона / Ателье

7.3 Grocery Store / Lounge Zone
Супермаркет / Лайф-зона

7.4 Lounge Zone
Лайф-зона

7.5 Lounge Zone
Лайф-зона

8.1 Ethno-Village
Этно-деревня

8.2 Storage Rooms and Waxing Area
Вансы-кабины и пункт хранения спортивного инвентаря

12 Flag Plaza / Delegation Welcome Ceremonies
Площадь церемоний приветствия

9.1 Vehicle Checkpoint (for staff)
Транспортный НПП (для персонала)

9.2 Security Checkpoint
Пешеходный НПП

9.3 Vehicle Checkpoint
Транспортный НПП

9.4 Vehicle Checkpoint
Транспортный НПП

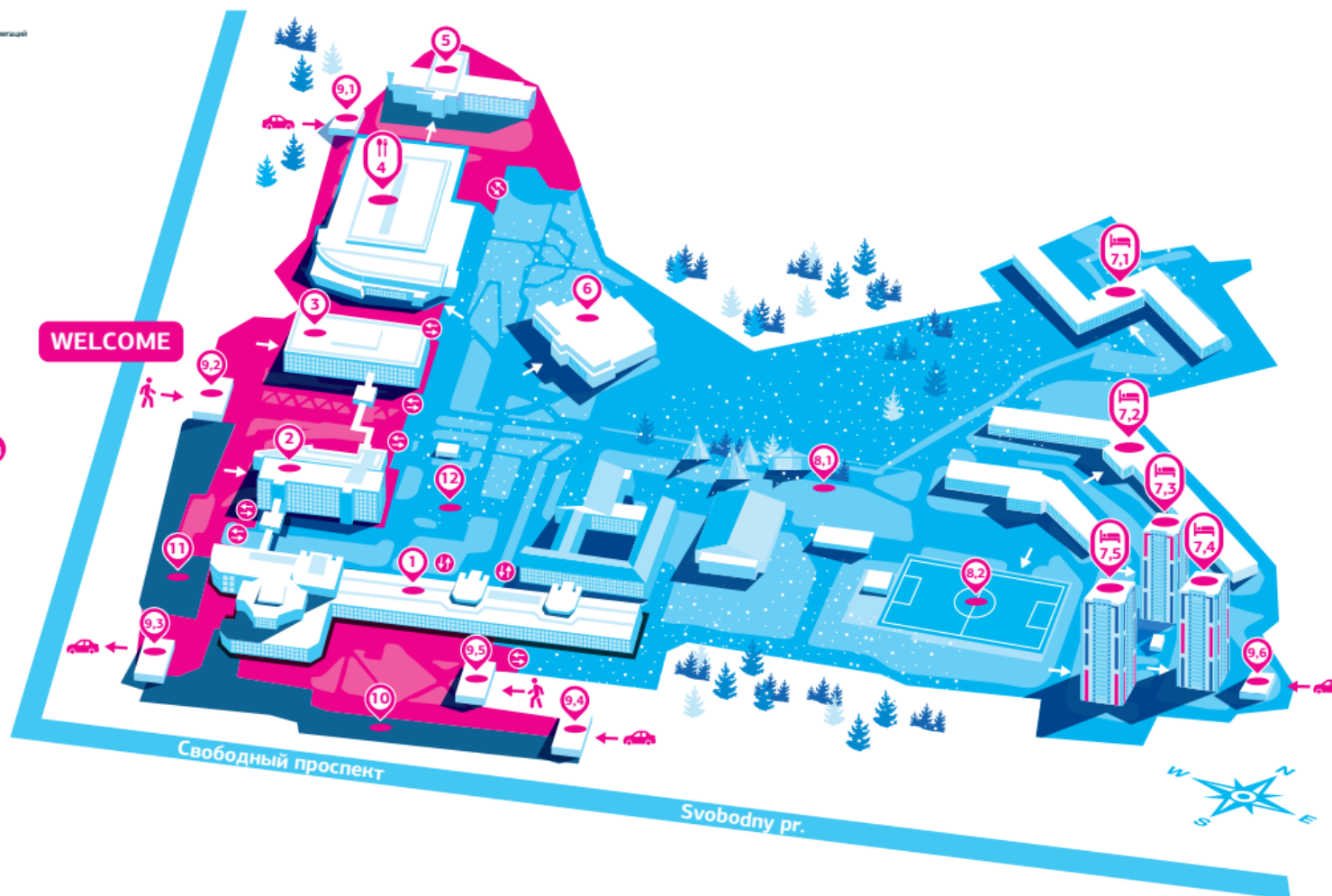
9.5 Security Checkpoint
Пешеходный НПП

9.6 Vehicle Checkpoint (for staff)
Транспортный НПП (для персонала)
Accreditation Checkpoints
Внутренний НПП

TRANSPORTATION MALL ТРАНСПОРТНЫЙ МОЛЛ

10 Transportation Mall
Транспортный Молл

11 Parking for HOD
Парковка для глав делегаций



INTERNATIONAL ZONE
МЕЖДУНАРОДНАЯ ЗОНА

OPERATIONAL ZONE
ОПЕРАЦИОННАЯ ЗОНА

TRANSPORTATION MALL
ТРАНСПОРТНЫЙ МОЛЛ

RESIDENTIAL ZONE
ЖИЛАЯ ЗОНА

8.4. KRASNOYARSK CITY MAP

WINTER UNIVERSIADE 2019 ON THE MAP OF KRASNOYARSK

SPORTS VENUES

- 1 Sopka Cluster (Winter Sports Academy Sports and Training Complex)
 - ▶ Sopka Multifunctional Sports Complex
 - ▶ Snezhny Sports and Training Block
 - ▶ Halfpipe Park
 - ▶ Set of alpine skiing courses
 - ▶ Freestyle Administrative and Training Block
 - ▶ Set of freestyle skiing courses
 - ▶ Gorny Sports and Training Block

- 2 Raduga Cluster (Winter Sports Academy Sports and Training Complex)
 - ▶ Raduga Multifunctional Sports Complex
 - ▶ Lyzhny Sports and Training Block
 - ▶ Start Complex with the ski stadium, roller skiing tracks with lighting and snowmaking systems

- 3 Platinum Arena Ice Arena

- 4 Crystal Ice Arena

- 5 Funpark Bobrov Log All Season Sports and Entertainment Park
 - ▶ Set of alpine skiing courses with video broadcasting, artificial snowmaking and sports lighting systems
 - ▶ SPORT CLUB Sports and Training Block

- 6 Biathlon Academy Multifunctional Complex

- 7 Ivan Yarygin Sports Palace

- 8 Yenisei Ice Stadium

- 9 Arena Sever Multifunctional Complex

- 10 Rassvet Ice Palace

- 11 Pervomaisky Ice Arena

UNIVERSIADE VILLAGE

- 12 Athletic's Village
- 13 Village Volunteers Residence

MEDICAL VENUES

- 14 Helipads for ambulance aircrafts
- 15 Emergency Care
- 16 Hospital

UNIVERSIADE PARK

- 17 Mira Square
- 18 Tatyshchev Island

MAIN PRESS CENTRE

- 19 Central Stadium

TRANSPORT INFRASTRUCTURE VENUES

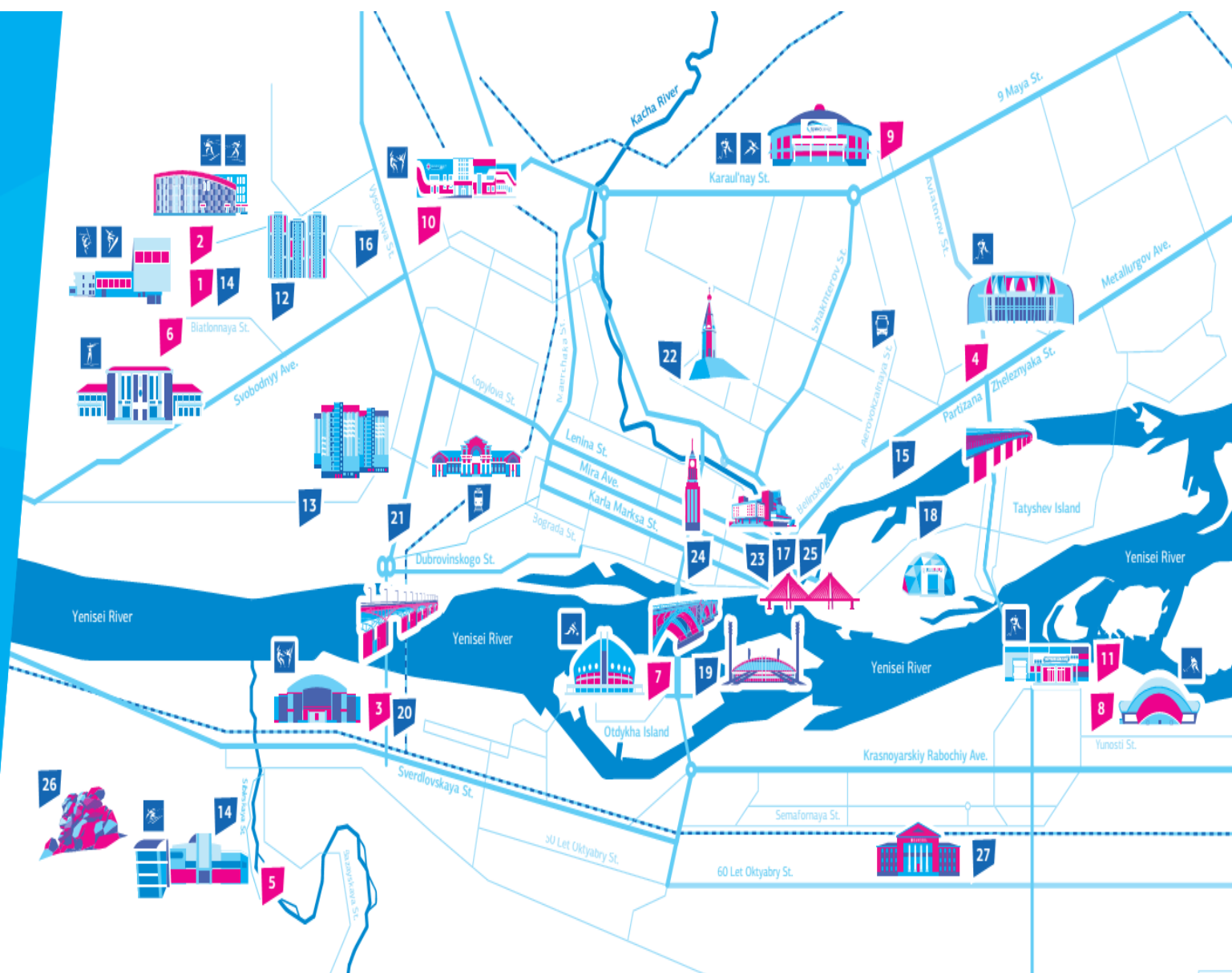
- 20 Road intersection in Tikhie Zori Microdistrict
- 21 Automobile road along Volochaevskaya Str. from Dubrovinskogo Str. to Kopylova Str.

HIGHLIGHTS OF THE CITY

- 22 Paraskeva Pyatnitsa Chapel
- 23 Krasnoyarsk Region Philharmonic Hall
- 24 Clock Tower
- 25 Vinogradovsky suspension bridge
- 26 Stolby Nature Reserve
- 27 Kamenka Cultural Space

Intercity Bus Station

Railway Station



FOUNDERS



GENERAL PARTNER



OFFICIAL SPONSORS

