



KRASNOYARSK 2019
29TH WINTER UNIVERSIADE



TECHNICAL HANDBOOK **SNOWBOARD**



FEBRUARY 2019

WU 2019 TECHNICAL HANDBOOK TABLE OF CONTENTS

WU 2019 TECHNICAL HANDBOOK TABLE OF CONTENT	2
1. WELCOME MESSAGES.....	3
2. ABBREVIATIONS	5
3. FISU INTERNATIONAL TECHNICAL COMMITTEE FOR THE WINTER UNIVERSIADE (CTI – UH)	6
4. GENERAL INFORMATION	7
4.1. 29TH WINTER UNIVERSIADE KRASNOYARSK 2019.....	7
4.2. 29TH WINTER UNIVERSIADE KRASNOYARSK 2019 COMPETITION SCHEDULE.....	7
4.3. OPENING AND CLOSING CEREMONIES	7
5. COMPETITION INFORMATION.....	8
5.1. TECHNICAL COMMITTEE.....	8
5.2. INTERNATIONAL TECHNICAL OFFICIALS	8
5.3. SNOWBOARD STRUCTURAL CHART.....	9
5.4. TECHNICAL REGULATIONS.....	10
5.5. COMPETITION FORMAT	11
5.6. COMPETITION AND TRAINING VENUE INFORMATION	13
5.7. DAY BY DAY SCHEDULE	14
5.8. EQUIPMENT	16
5.9. DOPING CONTROL.....	17
5.10. AWARD AND MEDALS	19
5.11. PRESS INTERVIEWS.....	20
5.12. SPORT INFORMATION SERVICES	20
6. SERVICE INFORMATION	22
6.1. RADIO FREQUENCY CONTROL	22
6.2. ACCREDITATION	22
6.3. SKI PASS.....	22
6.4. STORAGE AND WAX ROOMS	22
6.5. TRANSPORTATION	23
6.6. FOOD AND BEVERAGES.....	24
6.7. MEDICAL SERVICES	24
7. OC CONTACTS	26
8. APPENDICES.....	27
8.1. 29TH WINTER UNIVERSIADE 2019 KRASNOYARSK COMPETITION SCHEDULE.....	27
8.2. VENUE LAYOUTS.....	28
8.3. PROFILE OF THE SLOPES.....	29
8.4. UNIVERSIADE VILLAGE MAP.....	30
8.5. KRASNOYARSK CITY MAP	31

1. WELCOME MESSAGES



Dear Friends,

On behalf of FISU I am delighted to welcome you to the 29th Winter Universiade which will be held on 2-12 March 2019 in Krasnoyarsk, Russia!

This technical handbook has been created to provide you with comprehensive information on your participation in the Winter Universiade. The handbook reflects an immense amount of work that FISU's Technical Committee Chairs together with the competition managers of the Organising Committee and the International Sports Federations have done to allow world's most successful student athletes to compete in the best possible environment.

The Winter Universiade is set to become a landmark event for the whole Siberia. The investments in infrastructure and sport facilities have been incredible. The organisers have been working really hard to train staff and volunteers. Our most profound appreciation goes to all those who worked day and night to offer high standards of services to all participants.

Now, the time has finally come to celebrate winter university sports in Siberia! We look forward to welcome you in Krasnoyarsk and we are sure that you will find in this manual all the necessary information that will help you to participate in the competitions in a smooth and proper manner.

Together with the entire FISU Family, I wish you all the best for a very successful Winter Universiade in Krasnoyarsk!

A handwritten signature in black ink, appearing to read 'Oleg Matytsin'.

Oleg Matytsin
FISU President



Dear Friends,

One of the most awaited and large-scale events, the Winter Universiade 2019, is going to be held in Krasnoyarsk from March 2 to 12.

The forthcoming Games will make a lasting impression on the participants' lives. More than 3,000 athletes from all over the globe will compete for 76 sets of medals in 11 sports. Thousands of people of different professions, nationalities, confessions, and cultures will be united for several days by the same world. It is the world of sport, health, unlimited opportunities, and success. Not only the victories of the best athletes and the tears of those who did not succeed will be the Universiade result, it will also leave colourful feelings of the welcoming country, beautiful city, warm-hearted Siberians. Touching memories, strong friendship and faith in creative power of sport will stay in hearts of people for years.

Over the last 5 years, working together with the International University Sports Federation, we have made complicated but interesting project a reality. It is to prepare a colourful and memorable sports event. Thousands of people including athletes, spectators, and viewers all over the world live in the breathtaking waiting, anticipating this great feast of friendship, strength and creation.

The attached technical handbook is about one of the 11 sports included into the programme of the Winter Universiade 2019. In the technical handbook one can find all the required information regarding disciplines and rules, the sports programme and main services for athletes and official delegation members. Likewise, you can familiarize yourself with the competition venue.

On behalf of the Organising Committee, I thank you for your interest in the forthcoming Games! We are looking forward to meeting you during the 29th Winter Universiade Krasnoyarsk 2019!

**Maxim Urazov,
Director General
ANO "Directorate Krasnoyarsk 2019"**

A handwritten signature in dark ink, consisting of stylized, overlapping loops and strokes.

2. ABBREVIATIONS

Abbreviation	Name in full
ADAMS	Anti-Doping Administration and Management System
CIC	FISU International Control Committee
CMI	FISU International Medical Committee
CT	FISU Technical Committee
CTI-UH	FISU International Technical Committee for Winter Universiade
EC	FISU Executive Committee
FIS	International Ski Federation
FISU	International University Sports Federation
GTM	General Technical Meeting
HOD	Head of Delegation
HP	Halfpipe
ICR	FIS International Competition Rules
ISF	International Sports Federation
ITO	International Technical Official
NADO	National Anti-Doping Organisation
NOC	National Olympic Committee
NSF	National Sports Federation
NTO	National Technical Official
NUSF	National University Sports Federation
OC	Organising Committee
PGS	Parallel Giant Slalom
PSL	Parallel Slalom
RADO	Regional Anti-Doping Organisation
RSF	Russian Snowboard Federation
SBD	Snowboard
SBX	Snowboard Cross
SIC	Sport information Centre
SID	Sport Information Desk
SS	Slopestyle
TD	Technical Delegate
TCC	Technical Committee Chair
TO	Technical Official
TUE	Therapeutic Use Exemptions
UV	Universiade Village
WADA	World Anti-Doping Agency
WU	Winter Universiade

3. FISU INTERNATIONAL TECHNICAL COMMITTEE FOR THE WINTER UNIVERSIADE (CTI – UH)

Position	First Name	Last Name	Country
FISU CTI-UH Chair	Roger	ROTH	SUI
FISU CTI-UH Vice Chair	Robert	PHILIP	CAN
FISU TCC Alpine Skiing	Matjaz	KRANJC	SLO
FISU TCC Biathlon	Karl-Heinz	WOLF	GER
FISU TCC Cross-Country Skiing	Zofia Stefania	KIELPINSKA	POL
FISU TCC Curling	Jeanette	JOHNSTON	GBR
FISU TCC Figure Skating	Marie	LUNDMARK	FIN
FISU TCC Freestyle Skiing	Magnus	FERRY	SWE
FISU TCC Snowboard	Ola	SUNDEKVIST	SWE
FISU TCC Ice Hockey	Reto	BERTOLOTTI	SUI
FISU TCC Ice Hockey	Jarmo	JALARVO	FIN
FISU TCC Short Track	Nam Hwan	PARK	KOR
FISU TCC Ski Orienteering	Valentin	GARKOV	BUL
FISU TCC Bandy	Tor Audun	SOERENSEN	NOR

4. GENERAL INFORMATION

4.1. 29TH WINTER UNIVERSIADE KRASNOYARSK 2019

Date:	2 – 12 March 2019
Location:	Krasnoyarsk, Russia
Sports Programme:	11 Sports (8 Compulsory, 3 Optional) with 76 events
Venues:	10 Competition venues, 1 Training venue

4.2. 29TH WINTER UNIVERSIADE KRASNOYARSK 2019 COMPETITION SCHEDULE

Please refer to Appendix 8.1.

4.3. OPENING AND CLOSING CEREMONIES

4.3.1. OPENING CEREMONY

Date:	2 March 2019
Location:	Platinum Arena Ice Arena
The beginning of the Ceremony:	20:19
Duration:	3 hours
March pass of the athletes:	20:30 – 21:20

4.3.2. CLOSING CEREMONY

Date:	12 March 2019
Location:	Platinum Arena Ice Arena
The beginning of the Ceremony:	20:00
Duration:	2 hours 30 minutes

5. COMPETITION INFORMATION

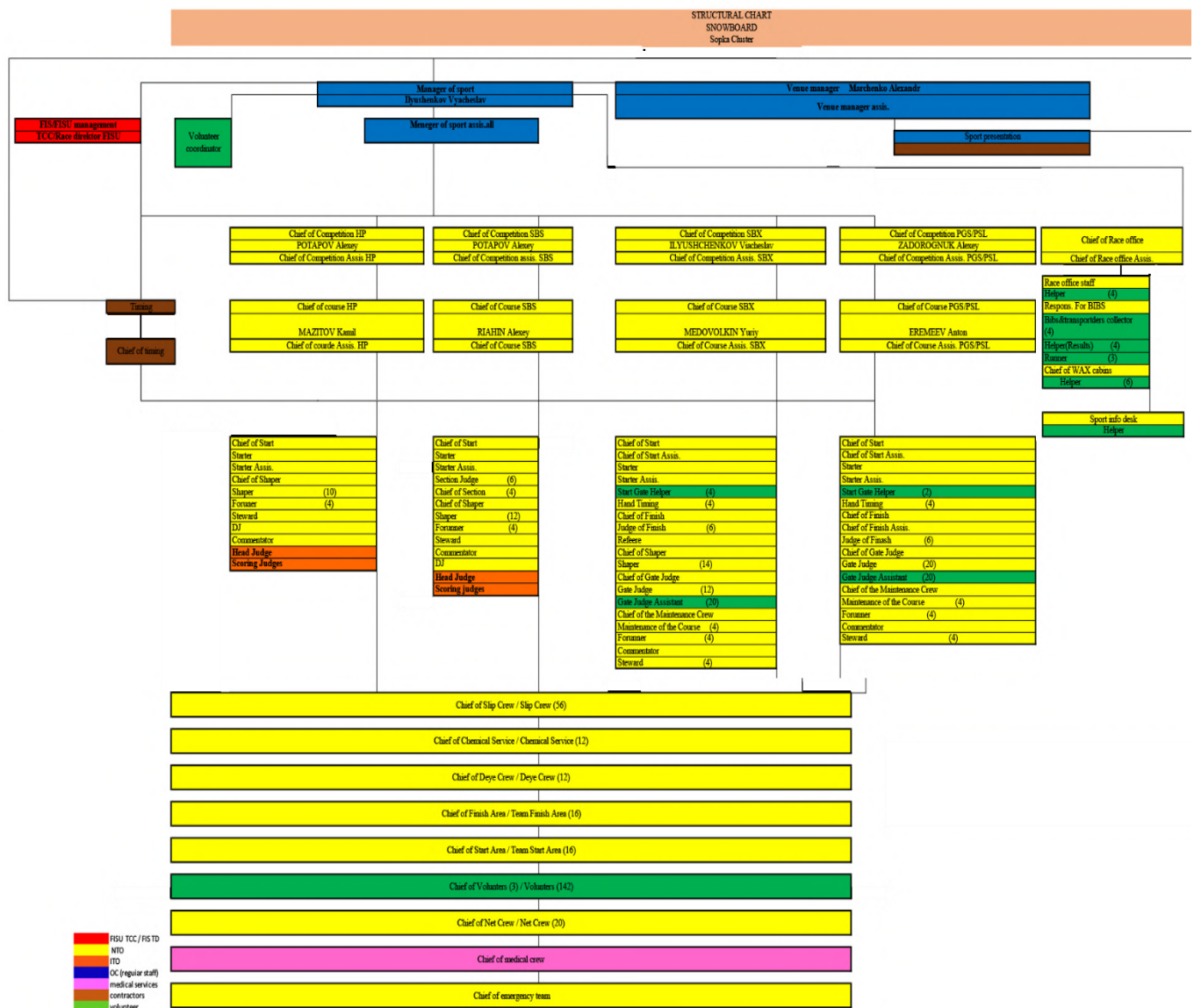
5.1. TECHNICAL COMMITTEE

Technical Committee Chair	Ola SUNDEKVIST (SWE)
FIS Technical Delegate HP / SS	Lukasz LIGOCKI (POL)
FIS Technical Delegate SBX /SX	Lenka DVORAKOVA (CZE)
FIS Technical Delegate PAR	Helmut LEXER (AUT)
Competition Manager	Vyacheslav ILYSHCHENKOV (RUS)

5.2. INTERNATIONAL TECHNICAL OFFICIALS

FIS Head Judge	Markus BETSCHART (SUI)
FIS Scoring Judge	Anton BJÖRKLUND (SWE)
FIS Scoring Judge	Fedor RAZUVAEV (RUS)
FIS Scoring Judge	Jin Youl KIM (KOR)
FIS Scoring Judge	Ryo HASHIMOTO (JPN)
FIS Scoring Judge	Gareth VOGAN (GBR)
FIS Scoring Judge	Geoff PETERSON (CAN)

5.3. SNOWBOARD STRUCTURAL CHART



5.4. TECHNICAL REGULATIONS

The snowboard events will be organised in accordance with the most recent technical regulations of the International Ski Federation (FIS), except when specifically amended with the WU2019 Regulations or by the CTI-UH. In any dispute, the English text will be regarded as authoritative.

The programme includes the following events:

Men	Women
Parallel Giant Slalom (PGS)	Parallel Giant Slalom (PGS)
Parallel Slalom (PSL)	Parallel Slalom (PSL)
Snowboard Cross (SBX)	Snowboard Cross (SBX)
Slopestyle (SS)	Slopestyle (SS)
Halfpipe (HP)	Halfpipe (HP)

Each country may enter:

Men:	Four (4) athletes in each individual event
Women:	Four (4) athletes in each individual event

At the first General Technical Meeting, the Head of Delegation or his/her representative shall confirm and sign the official entry list of competitors. Only competitors with an active FIS code are allowed to participate in each snowboard event. Entries are controlled by the Organiser and the FIS Technical Delegate. Only accredited athletes can be considered for the draw of a starting list.

5.4.1. JURY COMPOSITION

In accordance with the FIS ICR Rules (2004.5.2) the Jury will be composed by the following members:

- the TD for all competitions
- the chief of competition for all competitions
- the chief of finish for Snowboard Cross events
- the Head Judge for the Slopestyle and Big Air events
- the Referee for all Alpine events
- FIS Race Director for Snowboard Cross events

At the Winter Universiade the FISU Race/Contest Director (FISU TCC), as approved by FIS, has a voting right as a member of the Jury for all competitions.

5.4.2. PROTEST AND APPEAL

Any protest of a sport or disciplinary nature must reach the Jury according to the regulations laid down by the FIS. Such protest must be accompanied by a deposit of CHF 100.- or equivalent in another valid currency (FIS ICR Art. 2054; 2054.4). This deposit will be returned if the protest is upheld.

Each Head of Delegation or his/her deputy is authorized to lodge an appeal against the decision of the Jury. This appeal must be submitted in writing to the Jury of Appeal or competent authority in accordance with the FIS regulations.

Any decision of the Jury of Appeal or equivalent authority of a sport is final and must be reported immediately to the Head of Delegation of the country concerned. Any sport disciplinary situation, which cannot be satisfactorily resolved by the sports technical committees and the sport-specific disciplinary regulations, will be reported to the FISU Disciplinary Committee for further action to be taken. Where appropriate, a report will also be sent to FIS.

5.5. COMPETITION FORMAT

5.5.1. PARALLEL GIANT SLALOM (PGS)

- Qualification phase consist of 2 runs (1 run on blue and 1 run on red course). Add these times.
- Tie breaking in Qualification
- The tie will be broken by the best run of two. Best 16 athletes qualify for the Finals.
- Finals phase consist of 2 runs (1 run on blue and 1 run on red course)
- -1/8-finals - 1/4-finals- 1/2-finals- small and big finals
- Competitors' starting order for each event and each discipline is decided according to a specific formula by draw and/or point order during TCM
- The FIS points list provided by FIS must be used for the classification of competitors. If a competitor does not appear in the last valid FIS points list, he shall be assigned to that group of competitors without points.
- Jury can make changes on TCM

5.5.2. PARALLEL SLALOM (PSL)

- Qualification phase consist of 2 runs (1 run on blue and 1 run on red course). Add these times.
- Tie breaking in Qualification
- The tie will be broken by the best run of two. Best 16 athletes qualify for the Finals.
- Finals phase consist of 2 runs (1 run on blue and 1 run on red course)
- -1/8-finals - 1/4-finals- 1/2-finals- small and big finals
- Competitors' starting order for each event and each discipline is decided according to a specific formula by draw and/or point order during TCM
- The FIS points list provided by FIS must be used for the classification of competitors. If a competitor does not appear in the last valid FIS points list, he shall be assigned to that group of competitors without points.
- Jury can make changes on TCM

5.5.3. SNOWBOARD CROSS (SBX)

- Qualification phase consist of 2 timed runs (Best time will count)
- Top 16 Men and top 16 Women goes further to Round Robin
- Tie breaking in Qualification
- The tie will be broken by the total time of the two runs.
- Best 16 athletes qualify for the Finals
- Final phase is conducted as Round Robin
- There will be (5) five group heat rounds, where every competitor will compete in each round, against every other competitor. (FIS ICR Art. 2706.7)
- Top 8 top scoring competitors from the Round Robin format will qualify for the semifinals

- Competitors placed 1st, 4th, 5th and 8th in the ranking will take part in Semi Final 1. Competitors placed 2nd, 3rd, 6th and 7th in the ranking will take part in Semi Final 2
- The 1st and 2nd ranked competitor in each Semi Final will qualify for the Big Final. The 3rd and 4th ranked competitor in each Semi Final will qualify for the Small Final
- Jury can make changes on TCM Men

5.5.4.SLOPESTYLE (SS)

- Qualification: Heat System with one or two heats
- Seeded by FIS ICR SB Rules
- Qualification: 2 runs / best run counts
- Finals (12 M/6 W): 2 runs / best run counts
- Same start orders for final run 1 and Final run 2 based on results from qualification
- 6 scoring Judges, the high and low scores shall be discarded and the remaining scores will be counted
- Use TV for Video Judging system

5.5.5.HALFPIPE (HP)

- Qualification: Heat System with one or two heats
- Seeded by FIS ICR SBD Rules
- Qualification: 2 runs / best run counts
- Finals (12 M/6 W): 2 runs / best run counts
- Same start orders for final run 1 and Final run 2 based on results from qualification
- 6 scoring Judges, the high and low scores shall be discarded and the remaining scores will be counted

5.6. COMPETITION AND TRAINING VENUE INFORMATION

5.6.1. GENERAL INFORMATION

OC Venue Manager	Alexander MARCHENKO
------------------	---------------------

Venue	Function	Location	Distance to UV
Sopka Cluster	Training / Competition	Krasnoyarsk 56.002156, 92.750067	3,8 km / 8 min

5.6.2. VENUE LAYOUTS

Please refer to the Appendix 8.2.

5.6.3. SLOPES TECHNICAL DATA

THE PGS/PSL COURSE	
Length	480 m
Width	60 m
Angle	18°
THE SLOPESTYLE COURSE	
Length	479 m
Width	30 m
Angle	17,5
THE SNOWBOAR CROSS COURSE	
Length	920 m
Vertical drop	155 m
Average angle	15°

5.7. DAY BY DAY SCHEDULE

Training / Course Inspection
Competition
Reserve Day
Technical Meeting / Draw
Flower Ceremony
Medal Awarding Ceremony

Date	Day	Start Time	Finish Time	Event Name	Venue
28 February	THU	18:00	19:00	1st Team Captain Meeting SBX (GTM)	Universiade Village
1 March	FRI	9:00	9:20	Snowboard Cross - Inspection	Sopka cluster
		9:30	12:00	Snowboard Cross Official Training	Sopka cluster
		12:30	13:30	TCM Snowboard Cross - Draw	Sopka cluster
2 March	SAT	9:00	9:20	Snowboard Cross - Inspection	Sopka cluster
		9:30	10:30	Snowboard Cross Official Training	Sopka cluster
		10:50	10:55	Snowboard Cross - Start forerunners	Sopka cluster
		11:00	12:10	Snowboard Cross - Qualification Run #1	Sopka cluster
		12:20	13:30	Snowboard Cross - Qualification Run #2	Sopka cluster
		18:00	19:00	TCM Snowboard Cross	Universiade Village
3 March	SUN	9:00	9:20	Snowboard Cross - Inspection	Sopka cluster
		9:30	10:30	Snowboard Cross - Official Training	Sopka cluster
		10:50	10:55	Snowboard Cross - Start forerunners	
		11:00	13:00	SBX Qualification phase «Round Robin»	Sopka cluster
		13:30	14:30	Snowboard Cross SF and Finals W/M	Sopka cluster
		end of comp.		Flower Ceremony SBX W/M	Sopka cluster
				Medal Awarding Ceremony SBX W/M	Sopka cluster
		18:00	18:30	TCM PGS/PSL	Universiade Village
4 March	MON	10:30	13:00	Parallel giant slalom - Unofficial Training Session	Sopka cluster - Training Slope
		18:00	19:00	TCM Parallel Giant Slalom - Draw	Universiade Village
5 March	TUE	08:30	09:00	Parallel giant slalom - Warming up	Sopka cluster
		9:00	9:20	Parallel giant slalom - Inspection	Sopka cluster
		09:25	09:28	Parallel giant slalom - Start forerunners	Sopka cluster

		9:30	11:30	Parallel giant slalom - Qualification	Sopka cluster
		12:20	12:40	Parallel giant slalom - Inspection Finalist	Sopka cluster
		12:55	12:58	Parallel giant slalom - Start forerunners	Sopka cluster
		13:00	15:00	Parallel giant slalom - Finals	Sopka cluster
		end of comp.		Flower Ceremony PGS M/W	Sopka cluster
				Medal Awarding Ceremony PGS W/M	Sopka cluster
		18:00	19:00	TCM Parallel Slalom - Draw	Universiade Village
6 March	WED	08:30	09:00	Parallel slalom - Warming up	Sopka cluster
		9:00	9:20	Parallel slalom - Inspection	Sopka cluster
		09:25	09:28	Parallel slalom - Start forerunners	Sopka cluster
		9:30	11:30	Parallel slalom - Qualification	Sopka cluster
		12:20	12:40	Parallel slalom - Inspection Finalist	Sopka cluster
		12:55	12:58	Parallel slalom - Start forerunners	Sopka cluster
		13:00	15:00	Parallel slalom - Finals W/M	Sopka cluster
		end of comp.		Flower Ceremony PSL M/W	Sopka cluster
				Medal Awarding Ceremony PSL W/M	Sopka cluster
		16:00	16:30	TCM Half-pipe	Sopka cluster
		17:30	17:45	Half-pipe - Inspection	Sopka cluster
		19:00	21:00	Half-pipe - Official Training	Sopka cluster
7 March	THU	17:30	17:45	Half-pipe - Inspection	Sopka cluster
		19:00	21:00	Half-pipe - Official Training	Sopka cluster
		21:30	22:30	TCM Half-pipe - Draw	Sopka cluster
		Reserve Day			Sopka cluster
8 March	FRI	10:00	10:30	TCM Slopestyle	Sopka cluster
		11:15	11:30	Slopestyle - Inspection	Sopka cluster
		11:30	13:30	Slopestyle - Official Training	Sopka cluster
		16:15	16:30	Half-pipe - Inspection	Sopka cluster
		16:30	17:30	Half-pipe - Official Training	Sopka cluster
		17:45	18:30	Half-pipe - Qualification Run # 1	Sopka cluster
		18:40	19:25	Half-pipe - Qualification Run # 2	Sopka cluster
		19:50	20:00	Half-pipe - Inspection	Sopka cluster
		20:00	20:45	Half-pipe - Finalist Official Training	Sopka cluster
		21:00	22:00	Half-pipe Finals	Sopka cluster
		end of comp.		Flower Ceremony SB Halfpipe M/W	Sopka cluster
				Medal Awarding Ceremony SB Halfpipe W/M	Sopka cluster
9 March	SAT	11:00	11:30	Slopestyle - Inspection	Sopka cluster
		11:30	13:30	Slopestyle - Official Training	Sopka cluster
		14:00	15:00	TCM Slopestyle Draw	Sopka cluster
10 March	SUN	8:30	8:40	Slopestyle Inspection	Sopka cluster

		9:00	9:45	Slopestyle - Official Training	Sopka cluster
		10:00	12:00	Slopestyle - Qualification	Sopka cluster
		13:00	13:45	Slopestyle - Finalist Official Training	Sopka cluster
		14:00	15:00	Slopestyle Finals	Sopka cluster
		end of comp.		Flower Ceremony Slopestyle	Sopka cluster
		15:15	15:30	Medal Awarding Ceremony Slopestyle	Sopka cluster
11 March	MON	Reserve Day			Sopka cluster

Ceremonies:

Flower ceremonies will be held immediately after the finish of the competition. Medal Awarding Ceremonies will be held approximately 15 min. after the end of the competitions. Medal Awarding times in the day by day schedule are subject to changes based on the finish time of the competition. For more information please refer to the chapter 5.10.

Trainings:

Training possibilities in Sopka Cluster starts from the 1 March 2019.

Reserve Day:

The OC will do its best to hold all competitions in the scheduled days. However, under exceptional weather conditions the competitions may have to be reported to the next day.

General Technical Meeting

The GTM – General Technical Meeting (1st Team Captains Meeting) will be held on the 28 February at 18:00 at the Universiade Village.

At the first General Technical Meeting, the Head of Delegation or his/her representative shall confirm and sign the official entry list of competitors. Only competitors with an active FIS code are allowed to participate in each Snowboard event. Entries are controlled by the Organiser and the FIS Technical Delegate. Only accredited athletes can be considered for the draw of a starting list.

5.8. EQUIPMENT

Clothing and equipment control will in principle follow FIS rules. The equipment control will be carried out in respect of the recent technical FIS regulations if no additional FISU rule will be determined. Each competitor is responsible for the equipment that he/she uses.

The term competition equipment encompasses all items of equipment which the competitor uses in competition. This includes clothing as well as apparatus with technical functions. The entire competition equipment forms a functional unit.

All equipment used by Athletes is governed by the FIS Specifications for Competition Equipment which can be found on the following website:

<https://res.cloudinary.com/fis-production/image/upload/v1536832907/fis-prod/assets/Specifications for Competition Equipment.pdf>

5.9. DOPING CONTROL

5.9.1. DOPING CONTROL

Doping Control will be carried out in accordance with the WADA World Anti-Doping Code and FISU regulations. Conditions for doping control procedures will be provided during the competitions at all sports venues.

5.9.2. LIST OF PROHIBITED SUBSTANCES

The actual list of prohibited substances and methods is defined in accordance with WADA international standards. National University Sports Federations will be responsible for ensuring that their delegations, namely athletes, are made aware of the actual copy of The Prohibited List.

Ignorance of the Prohibited List contents will in no way constitute a valid excuse for any participant of the Winter Universiade violating valid anti-doping rules. For the WADA list of prohibited substances and methods, please refer to the following website: www.wada-ama.org.

5.9.3. TESTING

The required number of samples will be selected during the competition and non-competition periods in accordance with the Test Distribution Plan developed by the Organising Committee under the supervision of the FISU CMI. During the Universiade, athletes can be tested at any time without prior notice. The testing will be conducted by Doping Control Officers (DCO) from an anti-doping organization accredited by WADA. Testing will be conducted under the supervision of the FISU Medical Committee. Doping samples will be sent to the WADA-accredited anti-doping laboratory. All results will be sent to the Chairman of the FISU Medical Committee and entered into the ADAMS system. In case of violation of Anti-Doping Rules, the responsibility for processing the results lies with the FISU Medical Committee.

In case of setting a national record, doping testing of the athlete is carried out at the expense of his National University Sports Federation.

5.9.4. DOPING CONTROL STATIONS

Ten doping control stations are located at sports venues. The 11th doping control station is located in the Medical Centre of Universiade Village. All doping control stations will be marked with signs and the way to them will be shown by the signage. After the completion of the doping control procedure, all samples collected at each doping control station will be delivered to the central doping control station together with the necessary support documentation (doping control protocols) for further registration in the ADAMS system. All samples will be packaged and sent to the WADA accredited anti-doping laboratory in accordance with the international standards. All the information concerning the doping control programme during the Winter Universiade is confidential according to WADA and FISU requirements. When visiting a doping control station athletes are required to have accreditation cards.

Doping Control Station for Snowboard athletes will be allocated on the 1st floor of the Snezhny Sports and Training Block at the Sopka Cluster.

5.9.5.THERAPEUTIC USE EXEMPTIONS (TUE)

Universiade participants who require Therapeutic Use Exemption (TUE) must make an appropriate request to the National Anti-Doping Organization or International Sports Federation before participation in the Universiade. The World Anti-Doping Agency International Standard for TUE will be applied in this case. Every athlete who uses a substance or a method included in the List of prohibited substances is obliged to be in possession of a completed TUE form of the established standard from the moment of arriving until the departure from the Universiade Village after the Closing Ceremony of the Universiade.

If there is a need in the use of a prohibited substance or a prohibited method for medical reasons after the opening of the Winter Universiade, an athlete must submit a request for TUE to the FISU TUE Committee as a matter of urgency. The responsibility for completing the TUE form and submitting an application to the FISU TUE Committee lies with the delegation physician. If the delegation does not have its own physician the athlete shall submit a request for TUE with the attachment of medical documentation confirming the fact of providing him/her with emergency medical treatment to the FISU TUE Committee.

5.9.6. CONTACT DETAILS

Head of the Anti-doping division

Maksim VEREVKIN

Tel.: +7 923 377 2019

Email: m.verevkin@krsk2019.ru

5.10. AWARD AND MEDALS

5.10.1. FLOWER CEREMONY

Flower Ceremonies will take place after the end of each race in the immediate vicinity of the finish zone.

5.10.2. MEDAL AWARDING CEREMONY

The Medal Awarding Ceremonies will be held at the venue at the end of the competition accordingly to the detailed schedule by sport (approximately 15 min. after the end of the competitions). For the day by day schedule please refer to the chapter 5.7.

The official languages for the Medal Awarding Ceremonies will be Russian and English.

The medallists of each event must attend the Medal Awarding Ceremony.

In case a medallist is unable to attend, the medal and bouquet are delivered to an official of the relevant delegation, which shall wear the uniform of the delegation to take part in the ceremony. The official must not mount the podium but walk in front of it and take the medal and bouquets in his/her hands.

In case all the winners cannot be present, the ceremony is postponed.

During the Medal Awarding Ceremony:

- The athletes are not allowed to take any national flag or any other national, cultural or religious symbol on the podium;
- The national flags of the first three (3) medallists will be raised and the only anthem played will be the FISU anthem, the Gaudeamus Igitur;
- During the playing of the FISU anthem and the raising of the flags, they shall face the flags and conduct themselves in a dignified manner at all times. No national anthem is played during the ceremony;
- Athletes are expected to take off their caps when receiving the medal and keep it in hand throughout the ceremony (i.e. playing of the FISU anthem and raising of the flags);
- Athletes, authorities and accompanying persons are required to face the flags while they are being raised and the FISU anthem is being played.
- The athletes must wear their delegation's approved uniform or the uniform with which they competed if the ceremony takes place right after the end of the competition and at the same venue.
- After the medals are awarded athletes must remain in the awarding area for photo shooting on the podium with medals.
- In order to take the best photo during the shooting athletes should follow the recommendations of photographers.
- After the Medal Awarding Ceremony and the official shooting on the podium the medallists/coaches are invited to the press conference. Athletes must bring their medals to the press conference.

5.10.3. DIPLOMA OF HONOURS

- The athletes ranked one (1) to eight (8) will receive a Diploma of Honours.
- For team events, each team member will receive a personal diploma of honour mentioning his/her name and the team ranking.

- Diplomas of honours are not distributed to winners at the Medal Awarding ceremony. They are handed to the Head of Delegation or an appointed representative of each delegation in the Universiade Village at a later time.
- If an athlete or team is disqualified, the diploma(s) shall be returned to FISU.

5.11. PRESS INTERVIEWS

Venue Press Centres for media representatives are organised at all Winter Universiade 2019 competition sites.

At the end of a competition, all athletes must leave the field of play through the mixed zone where brief interviews will be held. Every athlete/coach should be ready to communicate with media representatives upon their request. In case of cold weather, team representatives should give an athlete a warm jacket or a blanket prior to entering the mixed zone.

After the award ceremony, all competition medallists and/or their coaches will be invited to participate in the post-competition press conference. A volunteer from the Venue Press Centre will invite and then accompany athletes/coaches to the press conference room. Athletes must bring their medals to the press conference.

Simultaneous interpretation in English and Russian will be provided during the press conference. If a press conference participant does not speak either of these languages, they should invite their team interpreter to the press conference.

To accommodate individual interviews, special rooms in the Main Press Centre and Universiade Village will be provided. Accredited journalists and delegation attachés may use these rooms only after making an interview arrangement with an athlete or a coach.

5.12. SPORT INFORMATION SERVICES

5.12.1. ON-LINE SPORT INFORMATION SERVICES

Internet address:	https://krsk2019.ru/
-------------------	---

5.12.2. SPORT INFORMATION CENTRE (SIC) AT THE UV

The Sport Information Centre is located on the second floor of the Congress hall SFU in the International Zone at the Universiade Village and provides the following information/services

to delegations during the Krasnoyarsk 2019 Winter Universiade:

- Distribution of Technical Handbooks
- Competition schedule
- Training schedule
- Technical meeting information
- Distribution of daily sport results

The Sport Information Centre will operate between 07:00 to 23:00 from 23 February to 14 March 2019.

5.12.3. SPORT INFORMATION AT THE VENUE

A Sport Information Desk (SID) will be located at each venue, will distribute most recent information related to the competitions to the SID and receive requests from the team representative(s).

The Sport Information Desk will operate from 1 to 12 March 2019 in accordance with the competitions and training schedules (2 hours before and after the events).

5.12.4. SPORTS INFORMATION DISTRIBUTION

Information	Online	Venue	UV SIC	ITO Hotel
Competition Schedule	+	+	+	+
Start list / Result list	+	+	+	+
Change to Schedules	+	+	+	+
Special announcements and urgent notice		+	+	+
Weather Information	+	+	+	+
Medal table	+			
Technical Handbook	+		+	+
Regulations for the WU2019	+			
Non sport information (transport, catering, etc)		+	+ (MIC)	+
Answer and follow up to teams questions		+	+	+

6. SERVICE INFORMATION

6.1. RADIO FREQUENCY CONTROL

6.1.1. GENERAL INFORMATION

At the sport venues of the Winter Universiade Krasnoyarsk 2019 for all participants there will be restrictions applied to the use of radio electronic high frequency devices (hereinafter, REDs), namely: radio stations, Wi-Fi access points, radio microphones and other wireless equipment.

All the users of REDs have to get a permission to use radio equipment. Before using REDs, one has to have it tested and marked with special labels.

Information on the location of the testing and marking points and the full procedure of getting a permit to use of REDs is available at the Winter Universiade Krasnoyarsk 2019 official website: <https://krsk2019.ru/en/pages/radio equip.>

At the venue entrance, all non-marked radio electronic devices will be placed into special lockers and will be returned to the owners upon exiting the venue.

6.1.2. CONTACT DETAILS

Head of Radio Frequency Planning and Control Division	Timofey SUKHANOV Email: t.sukhanov@krsk2019.ru
Head of Communication Organisation Department	Irina LUCHKO Email: i.luchko@krsk2019.ru

6.2. ACCREDITATION

Location of the Main Accreditation Centre:

The Main Accreditation Centre is located in the International Zone of the Universiade Village.

IMPORTANT: No athlete will be allowed to attend official training or competition without the Accreditation Card. Temporary cards do not allow athletes to take part to official trainings and competitions.

6.3. SKI PASS

Lift entrance by accreditation or bib.

6.4. STORAGE AND WAX ROOMS

In total 20 wax cabins will be used to cover teams' needs on sport equipment storage and waxing cabins at the Sopka Cluster.

The waxing rooms are equipped with special tables for preparing skis, lighting, several electric outlets, adequate heating and ventilation, metal rack, chair, ski and snowboard shelf, holders for skis, waste bin.

6.5. TRANSPORTATION

6.5.1. TRANSPORTATION SYSTEM FOR ATHLETES AND TEAM OFFICIALS (TA)

The transportation system for athletes and official delegation members will provide transport services from 23 February to 14 March 2019.

Routes in the transportation system for athletes and official delegation members are marked with the abbreviation "TA" (Transport Athletes). Vehicles are being equipped with placards indicating route number for the individual, team sports and spectating athletes.



Example of a bus / minibus placard

6.5.2. TRANSPORTATION SCHEDULE FOR SNOWBOARD

Transportation of athletes in individual sports to the competition and training venues from the Universiade Village and back is organised on regular routes by shuttle buses system within 15-60 min interval. Buses will be available at the Transportation Mall of the Universiade Village.

Route number	Sport	Route	Distance to UV	Time
TA 002	Snowboard	Universiade Village - Sopka Cluster	1,5 km	5 min

Detailed timetable will be available in WU2019 Transportation Guide.

6.5.3. TRANSPORTATION SERVICES FOR SPECTATING ATHLETES AND OFFICIALS (TS)

Special shuttle buses which run between the Universiade Village and the competition venues are provided for the spectating athletes from 1 to 12 March 2019.

Transport for spectating athletes will operate in accordance with the competition schedule. All athletes, regardless of their delegation and sport, will have access to the bus transportation systems for athletes-spectators.

Following routes will be used for Spectating athlete transportation services:

Route number	Route	Sport
TS 001	Sopka Cluster - Biathlon Academy Multifunctional Complex	Snowboard / Freestyle Skiing / Biathlon
TS 002	Raduga Cluster	Cross-Country Skiing / Ski Orienteering
TS 003	Ivan Yarygin Sports Palace	Curling
TS 004	Arena Sever Multifunctional Complex	Short Track Speed Skating / Ice Hockey W*
TS 005	Crystal Ice Arena	Ice Hockey M
TS 006	Yenisei Ice Stadium / Pervomaisky Ice Arena	Bandy / Ice Hockey W*
TS 007	Platinum Arena Ice Arena	Figure Skating / Synchronized Skating
TS 008	Funpark Bobrov Log	Alpine Skiing

* Pervomaisky Ice Arena will host Ice Hockey W competitions from 1 to 8 March 2019, the spectating athletes route is TS 006. On 10 & 11 March 2019 the route will be changed to TS 004 as the competitions will be held at Arena Sever.

Detailed timetable will be available in WU2019 Transportation Guide.

6.6. FOOD AND BEVERAGES

6.6.1. UV MAIN DINING HALL

The Main Dining Hall offers catering services based on a daily nutrition (breakfast, lunch, dinner, late dinner). Opening hours of the Main Dining Hall are from 5:00 am to 1:00 am, during Universiade Village opening period from 23 February till 14 March 2019.

6.6.2. F&B SERVICES AT THE COMPETITIONS VENUES

At the competition venues, refrigerators with bottled water at room temperature, soft drinks and isotonic, dispensers for hot drinks, a buffet table with fruits, muesli, bars, nuts and dried fruits will be provided in athletes lounges/changing rooms.

6.7. MEDICAL SERVICES

6.7.1. GENERAL INFORMATION

The Organising Committee will provide all accredited persons with free emergency medical care (diagnosis/treatment and local transportation) of all injuries and illnesses directly and indirectly related to the concerned FISU Event. This obligation will begin from the day of the opening of the Universiade Village until two (2) days following the closing ceremony (23 February – 14 March 2019).

For the secondary or non-emergency treatment, participants must have their own appropriate insurance.

6.7.2.MEDICAL CENTRE AT THE UNIVERSIADE VILLAGE

In the Universiade Village a medical centre for provision of primary health care and specialized medical care will operate from 8 to 22 hours daily, providing emergency care 24 hours a day.

To provide an emergency medical care and medical evacuation to the dedicated hospitals on the territory of the medical centre, the ambulance cars of B and C classes are provided with a general and specialized ambulance teams.

Universiade Village Medical Centre will provide medical services to accredited client groups from 23 February to 14 March 2019.

Medicines prescribed by the physician of the medical centre in a single dose on the day of appeal will be provided free of charge at the pharmacy 24 hours a day, 7 days a week. Orthopaedic appliances (canes, crutches) and wheelchairs for the displacement of injured patients, if required, will be given for temporary use. On the territory of the Universiade Village it is planned to place automatic electronic defibrillators within their strategic accessibility.

Full information will be available in WU2019 Medical Guide.

6.7.3.MEDICAL SERVICES FOR ATHLETES AT THE SPORTS VENUES

Medical Aid Station

At the sports venues of the Winter Universiade 2019 an athlete medical station (AMS) is provided. AMS provides emergency and specialized medical aid to athletes. It has a doctor in sports medicine, a nurse, and a doctor-volunteer.

AMS working schedule: 1 hour before the start of the competition/official training and within 1 hour after the end of the competition/official training. Medical aid stations have all the required medical equipment, medicines and medical products to provide the set scope of medical aid.

Mobile medical teams

Mobile medical teams (MMT) for emergency medical aid at the field of play are formed in accordance with the International requirements for the sports held.

The team comprises: a traumatologist (expert in resuscitation), two rescuers with "Akya" type of rescue sleigh; MMTs are located in the finish zone. MMTs provide the required standard of equipment for emergency medical support.

Working schedule of MMT: 1 hour before the start of the competition/official training and within 1 hour after the competition/official training.

Ambulance cars

During the competition, all sports venues are provided with at least two ambulance cars of B and C classes with general and specialized teams. Ambulance teams are located in close proximity to the finish zone.

6.7.4.CONTACT DETAILS

Head of Medical Care Department	Maxim SUVOROV Tel: +7 923 549 2019 Email: m.suvorov@krsk2019.ru
Head of Medical Care Division	Elena MIKHAILENKO Tel: +7 933 329 2019 Email: e.mikhaylenko@krsk2019.ru

7. OC CONTACTS

ANO "Directorate Krasnoyarsk 2019"	19 Mira Av., build. 1, Krasnoyarsk 660049 007 (391) 291-8080 conference@krsk2019.ru
Delegation services	delegation.services@krsk2019.ru
Accreditation	acro2@krsk2019.ru
Department of Sports	sports@krsk2019.ru
Sports Entries	sport.entries@krsk2019.ru
Arrivals and departures / Transportation	a-d@krsk2019.ru

8. APPENDICES

8.1. 29TH WINTER UNIVERSIADE 2019 KRASNOYARSK COMPETITION SCHEDULE

Version: 01.02.2019 Subject to change

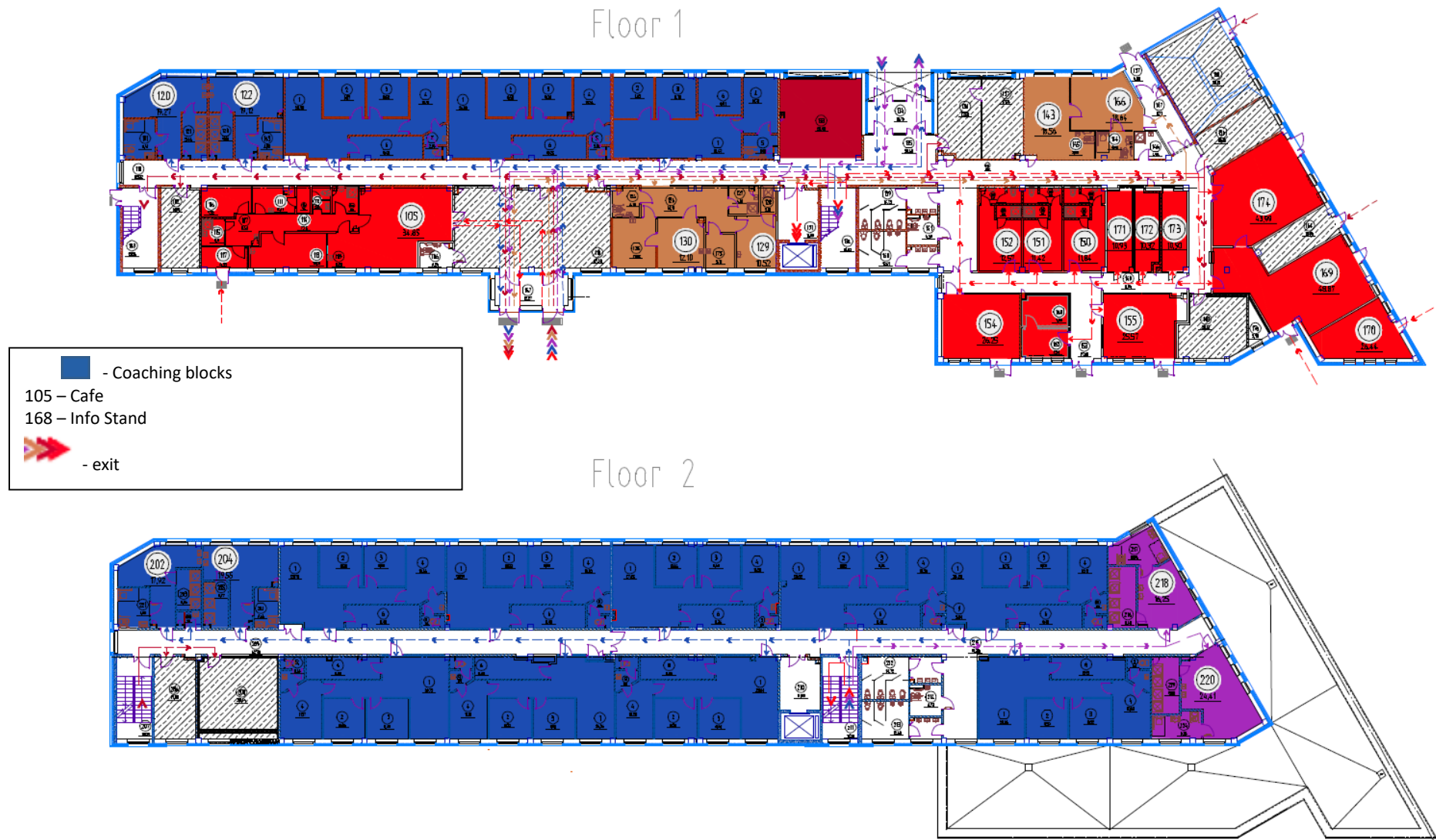


	FRI March 1	SAT March 2	SUN March 3	MON March 4	TUE March 5	WED March 6	THU March 7	FRI March 8	SAT March 9	SUN March 10	MON March 11	TUE March 12	#Events	
	 CEREMONIES Platinum Arena FISU WORLD CONFERENCE Grand Hall Siberia	Platinum Arena 20:19 Opening Ceremony	Platinum Arena 14:00 «WU 2019» Show		Grand Hall Siberia FISU World Conference	Grand Hall Siberia FISU World Conference	Grand Hall Siberia FISU World Conference					Platinum Arena 20:00 Closing Ceremony		
SNOW SPORTS	 ALPINE SKIING Funpark Bobrov Log	10:00-12:00 Official Free Skiing on Super-G course	Super-G W/M 10:30 Super-G W 13:00 Super-G M	Alpine Combined W 10:00 AC - SG 13:30 AC - SL	Alpine Combined M 10:00 AC - SG 13:30 AC - SL	Reserve day	Giant Slalom W 10:00 1 st run 13:00 2 nd run	Giant Slalom M 10:00 1 st run 13:00 2 nd run	Parallel Nations Team Event 11:00	Slalom W 10:00 1 st run 13:00 2 nd run	Slalom M 10:00 1 st run 13:00 2 nd run	Reserve day	9	
	 SNOWBOARD Sopka Cluster	Snowboard Cross 09:30-11:00 Official Training M 11:30-13:00 Official Training W	Snowboard Cross W/M 09:30-10:30 Official Training 11:00-13:00 Qualifications	Snowboard Cross W/M 09:30-10:10 Off. Training 10:30-12:30 Qualifications (Round Robin) 13:30-14:30 SF & Finals	Parallel Giant Slalom 09:30-10:30 Unofficial Training 13:30-15:30 Unofficial Training	Parallel Giant Slalom W/M 09:30-11:30 Qualifications 13:00-15:00 Finals	Parallel Slalom W/M 09:30-11:30 Qualifications 13:00-15:00 Finals Halfpipe 19:00-21:00 Off. Training	Reserve day Halfpipe 19:00-21:00 Off. Training	Slopestyle 11:30-13:30 Off. Training Halfpipe W/M 16:30-17:50 Off. Training 17:45-19:25 Qualifications 20:00-20:45 Off. Training 21:00-22:00 Finals	Slopestyle 11:30-13:30 Off. Training	Slopestyle W/M 09:00-09:45 Off. Training 10:00-12:00 Qualifications 14:00-15:00 Finals	Reserve day	10	
	 FREESTYLE SKIING Sopka Cluster	Aerials 16:30-19:00 Official Training	Aerials 12:30-15:00 Official Training	Aerials W/M 14:00-16:00 Off. Training 16:30-18:30 Qualifications 19:30-20:30 Finals	Slopestyle 11:00-13:30 Off. Training Mixed Team Aerials 16:00-17:50 Off. Training 18:00-19:00 Qualifications 19:30-20:30 Finals	Slopestyle 11:00-13:30 Official Training	Slopestyle W/M 09:30-10:30 Off. Training 11:00-14:00 Qualifications 15:30-16:30 Finals	Moguls 16:30-19:00 Official Training Reserve day	Moguls 16:30-19:00 Official Training	Ski Cross 09:00-13:00 Off. Training Moguls W/M 14:30-16:30 Off. Training 17:00-19:00 Qualifications 19:30-21:00 Finals	Ski Cross 09:00-13:00 Off. Training Dual Moguls W/M 15:00-16:30 Off. Training 17:00-18:45 Qualifications 19:30-20:30 Finals	Ski Cross W/M 09:00-10:00 Off. Training 10:30-11:30 Qualifications 11:40-12:55 Round Robin 13:30-14:30 SF & Finals	Reserve day	11
	 BIATHLON Biathlon Academy		Unofficial Training 10:00-12:00 W 13:00-15:00 M	Individual Official Training 10:00-12:00 W 13:00-15:00 M	Individual W/M 10:00-10:50 Zeroing W 11:00-12:45 IND 15km W 13:00-13:50 Zeroing M 14:00-15:45 IND 20km M	Sprint Official Training 10:00-12:00 W 13:00-15:00 M	Sprint W/M 10:00-10:50 Zeroing W 11:00-12:15 SP 7,5km W 13:00-13:50 Zeroing M 14:00-15:10 SP 10km M	Pursuit W/M 10:15-10:45 Zeroing W 11:00-11:50 PUR 10km W 13:15-13:45 Zeroing M 14:00-14:50 PUR 12,5km M	Unofficial Training 10:00-12:00 Single Mixed Relay 13:00-15:00 Official Training	Single Mixed Relay 6km W + 7,5km M 13:15-13:45 Zeroing 14:00-14:45 SMR	Mass Start W/M 10:15-10:45 Zeroing W 11:00-11:45 MS 12,5km W 12:15-12:45 Zeroing M 13:00-13:45 MS 15km M	Reserve day	9	
	 CROSS-COUNTRY SKIING Raduga Cluster	Unofficial Training 10:00-13:00	Individual (C) 10:00-13:00 Official Training W/M	Individual (C) W/M 08:00-09:55 Off. Training W 10:00-10:45 5km (C) W 10:45-11:25 Off. Training M 11:30-12:45 10km (C) M	Pursuit (F) W/M 08:00-09:55 Off. Training W 10:00-10:45 5km (F) W 10:45-11:25 Off. Training M 11:30-13:00 10km (F) M	Sprint (F) 10:00-13:00 Official Training W/M	Sprint (F) W/M 08:00-09:55 Off. Training W/M 10:00-11:00 Qualifications W/M 11:00-12:15 Off. Training W/M 12:30-14:00 Finals W/M	Mixed Team Sprint (C) 10:00-13:00 Official Training	Mixed Team Sprint (C) 08:00-09:55 Off. Training 10:00-11:00 Semi-Finals 11:00-11:55 Off. Training 12:00-12:30 Final	Relay W/M 08:00-09:55 Off. Training W 10:00-11:00 3x5km (C+FF) W 11:00-11:55 Off. Training M 12:00-14:00 4x7,5km (CC+FF) M	Mass Start (F) 10:00-11:30 Official Training W	Mass Start (F) 09:30-11:25 Official Training 11:30-13:00 15km (F) W Mass Start (F) 13:00-15:00 Official Training M	Mass Start (F) 09:30-11:25 Official Training 11:30-13:50 30km (F) M	11
 SKI ORIENTEERING Raduga Cluster		Unofficial Training 14:00-16:00	Sprint / Pursuit 15:30-17:30 Official Training M/W	Sprint M/W 15:00-16:30 M 16:45-17:30 W	Pursuit M/W 15:00-16:00 M 16:15-17:15 W	Sprint Relay 15:00-17:00 Official Training	Sprint Relay 16:00-17:30	Unofficial Training 13:00-15:00	Middle Distance 15:00-17:00 Official Training M/W	Middle Distance M/W 14:00-15:30 M 16:00-17:30 W	Reserve day	7		
ICE SPORTS	 CURLING Ivan Yarygin Sports Palace		08:15-15:15 Official Practice	09:00 w1 14:00 M1 19:00 w2	09:00 M2 14:00 w3 19:00 M3	09:00 w4 14:00 M4 19:00 w5	09:00 M5 14:00 w6 19:00 M6	09:00 w7 14:00 M7 19:00 w8	09:00 M8 14:00 w9 19:00 M9	09:00 Playoff Games M/w (3 v 6) / (4 v 5) 16:00 Semi Finals M/w	09:00 Medal Games M 14:00 Medal Games w		2	
	 ICE HOCKEY Men Crystal Ice Arena	09:00 LAT-SUI (1) 12:30 HUN-JPN (2) 16:00 CZE-USA (3) 19:30 SVK-RUS (4)	08:30 SUI-SWE (5) 11:45 CAN-GBR (6) 15:00 LAT-KAZ (7)	12:30 USA-HUN (8) 16:00 CZE-SVK (9) 19:30 RUS-JPN (10)	12:30 GBR-SUI (11) 16:00 CAN-LAT (12) 19:30 KAZ-SWE (13)	12:30 CZE-HUN (14) 16:00 SVK-JPN (15) 19:30 RUS-USA (16)	12:30 CAN-SUI (17) 16:00 LAT-SWE (18) 19:30 KAZ-GBR (19)	12:30 USA-SVK (20) 16:00 HUN-RUS (21) 19:30 JPN-CZE (22)	09:00 SVK-HUN (23) 12:30 GBR-LAT (24) 16:00 SWE-CAN (25) 19:30 SUI-KAZ (26)	09:00 JPN-USA (27) 12:30 SWE-GBR (28) 16:00 KAZ-CAN (29) 19:30 RUS-CZE (30)		16:00 SF#1 (31) 19:30 SF#2 (32)	11:00 Bronze (33) 15:00 Gold (34)	1
	 ICE HOCKEY Women Pervomaisky Ice Arena Arena Sever	Pervomaisky 12:30 JPN-USA (1) 16:00 CHN-CAN (2) 19:30 SUI-RUS (3)		Pervomaisky 12:30 CAN-JPN (4) 16:00 USA-SUI (5) 19:30 RUS-CHN (6)	Pervomaisky 12:30 CAN-USA (7) 16:00 SUI-CHN (8) 19:30 RUS-JPN (9)		Pervomaisky 12:30 CHN-JPN (10) 16:00 CAN-SUI (11) 19:30 USA-RUS (12)		Pervomaisky 12:30 JPN-SUI (13) 16:00 USA-CHN (14) 19:30 RUS-CAN (15)		16:00 SF#1 (16) 19:30 SF#2 (17)	16:00 Bronze (18) 19:30 Gold (19)	1	
	 SHORT TRACK Arena Sever		Unofficial Training 09:00-15:00	Official Training 09:00-20:00	14:00 1500m W/M Followed by Heats 3000m Relay W Heats 5000m Relay M	14:00 500m W/M Followed by SF 3000m Relay W SF 5000m Relay M	14:00 1000m W/M Followed by F 3000m Relay W F 5000m Relay M						8	
	 FIGURE SKATING Platinum Arena Rassvet Ice Palace (practice ice rink)			Rassvet Ice Palace Unofficial Practice	Rassvet Ice Palace Unofficial Practice	Official Practice	Ice Dance 14:30 Rhythm Dance Pairs 14:30 Short Program Men 17:00 Short Program	Ice Dance 13:00 Rhythm Dance Pairs 16:00 Free Skating Men 19:00 Free Skating	Syn. Skating 13:00 Short Program Ladies 14:00 Short Program Ice Dance 19:30 Free Dance	Syn. Skating 10:45 Free Skating Ladies 12:00 Free Skating Exhibition 19:00 EXH			5	
 BANDY Women Yenisei Ice Stadium	11:00 SWE-USA (1) 14:00 RUS-NOR (2)		10:00 NOR-USA (3) 13:00 RUS-SWE (4)	13:00 SWE-NOR (5)	13:00 USA-RUS (6)	10:00 SF#1 (7) 13:00 SF#2 (8)		15:00 Bronze (9) 19:00 Gold (10)				1		
 BANDY Men Yenisei Ice Stadium	17:00 SWE-NOR (1) 20:00 RUS-KAZ (2)	11:00 FIN-SWE (3) 14:00 RUS-BLR (4)	16:00 BLR-NOR (5) 19:00 FIN-KAZ (6)	16:00 SWE-KAZ (7) 19:00 NOR-RUS (8)	16:00 KAZ-NOR (9) 19:00 BLR-FIN (10)	16:00 SWE-BLR (11) 19:00 FIN-RUS (12)	16:00 NOR-FIN (13) 19:00 KAZ-BLR (14)	12:00 RUS-SWE (15)	11:00 5-6 place (16) 15:00 SF#1 (17) 19:00 SF#2 (18)	15:00 Bronze (19) 19:00 Gold (20)		1		
Awarding Ceremonies			8	10	7	12	6	6	8	12	5	2	76	

All Medal Awarding Ceremonies will take place at the venue at the end of the competition accordingly to the detailed schedule by sport.

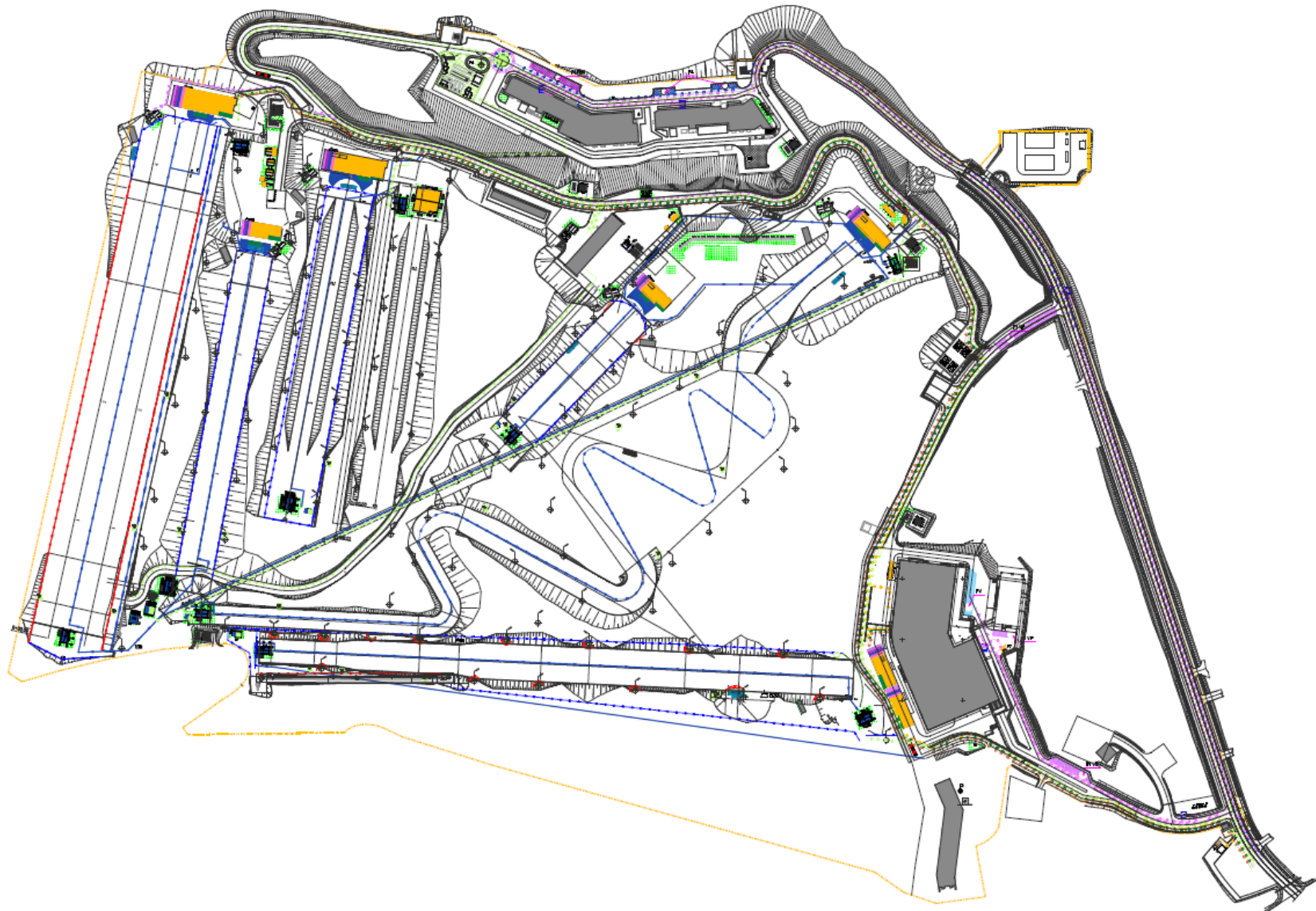
8.2. VENUE LAYOUTS

8.2.1. SNEZHNY SPORTS AND TRAINING BLOCK



8.3. PROFILE OF THE SLOPES

8.3.1. GENERAL LAYOUT



8.4. UNIVERSIADE VILLAGE MAP

1 Main Operations Centre
Главный операционный центр

INTERNATIONAL ZONE МЕЖДУНАРОДНАЯ ЗОНА

2 Main Accreditation Centre
1st floor Main Accreditation Centre / Bank / ATM / Meeting Rooms
2nd and 3rd floor Meeting Rooms / Interview Room
Главный аккредитационный центр
1й этаж: Главный аккредитационный центр / Банк / Банкомат / Номера встреч делегаций
2й и 3й этаж: Номера встреч делегаций / Номера для интервью

3 Congress-hall
2nd floor Main Information Centre / Sports Information Centre /
Travel Agency / Ticket Office / Lost&Found / Universiade Museum
3rd floor HOD Meeting Hall
Конгресс-зал
2й этаж: Главный информационный центр / Спортивный информационный центр / Туристическое агентство /
Билетный офис / Бюро находок / Музей Универсиады
3й этаж: Зал встреч Глав делегаций

5 Medical Centre / Doping Control / Pharmacy
Медицинский центр / Допинг контроль / Аптека

RESIDENTIAL ZONE ЖИЛИЩНАЯ ЗОНА

4 Dining Hall
Столовая

6 Service-hall
1st floor Fitness Centre / Business Centre / Souvenir Shop /
Post Services / Barber Shop / Flowers Shop / Lounge Zone
2nd floor Fitness Centre / Meeting Rooms
3rd and 5th floor Meeting Rooms
4th and 6th floor Religious Centre
Сервис-холл
1й этаж: Фитнес-центр / Бизнес-центр / Сувенирный магазин /
Почтовое отделение / Салон красоты / Цветочный магазин / Лобби-зона
2й этаж: Фитнес-центр / Номера встреч делегаций
3й и 5й этаж: Номера встреч делегаций
4й и 6й этаж: Центр религии

7 Accommodation for Delegations / Delegation Offices / Medical Rooms
Размещение делегаций / Офисы делегаций / Медицинские комнаты

7.1 Lounge Zone / Souvenir Shop
Лобби-зона / Сувенирный магазин

7.2 Grocery Store / ATM / Dry Cleaning / Lounge Zone / Tailors Shop
Супермаркет / Банкомат / Химчистка / Лобби-зона / Ателье

7.3 Grocery Store / Lounge Zone
Супермаркет / Лобби-зона

7.4 Lounge Zone
Лобби-зона

7.5 Lounge Zone
Лобби-зона

8.1 Ethno-Village
Этно-деревня

8.2 Storage Rooms and Waxing Area
Ван-кабины и пункт хранения спортивного инвентаря

12 Flag Plaza / Delegation Welcome Ceremonies
Площадь церемоний приветствия

9.1 Vehicle Checkpoint (for staff)
Транспортный НПП (для персонала)

9.2 Security Checkpoint
Пешеходный НПП

9.3 Vehicle Checkpoint
Транспортный НПП

9.4 Vehicle Checkpoint
Транспортный НПП

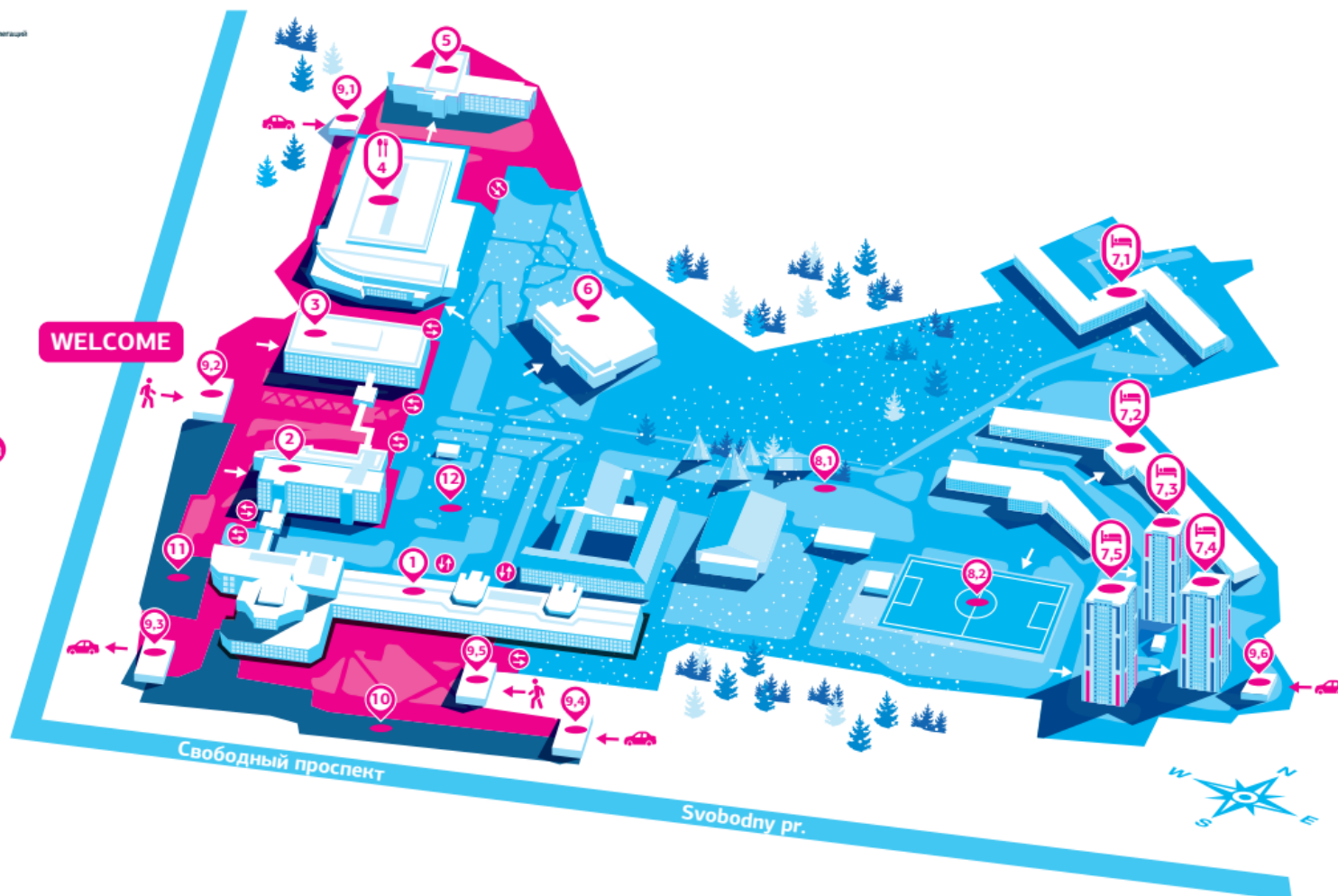
9.5 Security Checkpoint
Пешеходный НПП

9.6 Vehicle Checkpoint (for staff)
Транспортный НПП (для персонала)
Accreditation Checkpoints
Внутренний НПП

TRANSPORTATION MALL ТРАНСПОРТНЫЙ МОЛЛ

10 Transportation Mall
Транспортный молл

11 Parking for HOD
Парковка для глав делегаций



INTERNATIONAL ZONE
МЕЖДУНАРОДНАЯ ЗОНА

OPERATIONAL ZONE
ОПЕРАЦИОННАЯ ЗОНА

TRANSPORTATION MALL
ТРАНСПОРТНЫЙ МОЛЛ

RESIDENTIAL ZONE
ЖИЛИЩНАЯ ЗОНА

8.5. KRASNOYARSK CITY MAP

WINTER UNIVERSIADE 2019 ON THE MAP OF KRASNOYARSK

SPORTS VENUES

- 1 Sopka Cluster (Winter Sports Academy Sports and Training Complex)
 - ▶ Sopka Multifunctional Sports Complex
 - ▶ Snezhny Sports and Training Block
 - ▶ Halfpipe Park
 - ▶ Set of alpine skiing courses
 - ▶ Freestyle Administrative and Training Block
 - ▶ Set of freestyle skiing courses
 - ▶ Gorny Sports and Training Block

- 2 Raduga Cluster (Winter Sports Academy Sports and Training Complex)
 - ▶ Raduga Multifunctional Sports Complex
 - ▶ Lyzhny Sports and Training Block
 - ▶ Start Complex with the ski stadium, roller skiing tracks with lighting and snowmaking systems

- 3 Platinum Arena Ice Arena

- 4 Crystal Ice Arena

- 5 Funpark Bobrov Log All Season Sports and Entertainment Park
 - ▶ Set of alpine skiing courses with video broadcasting, artificial snowmaking and sports lighting systems
 - ▶ SPORT CLUB Sports and Training Block

- 6 Biathlon Academy Multifunctional Complex

- 7 Ivan Yarygin Sports Palace

- 8 Yenisei Ice Stadium

- 9 Arena Sever Multifunctional Complex

- 10 Rassvet Ice Palace

- 11 Pervomaisky Ice Arena

UNIVERSIADE VILLAGE

- 12 Athletic's Village
- 13 Village Volunteers Residence

MEDICAL VENUES

- 14 Helipads for ambulance aircrafts
- 15 Emergency Care
- 16 Hospital

UNIVERSIADE PARK

- 17 Mira Square
- 18 Tatyshev Island

MAIN PRESS CENTRE

- 19 Central Stadium

TRANSPORT INFRASTRUCTURE VENUES

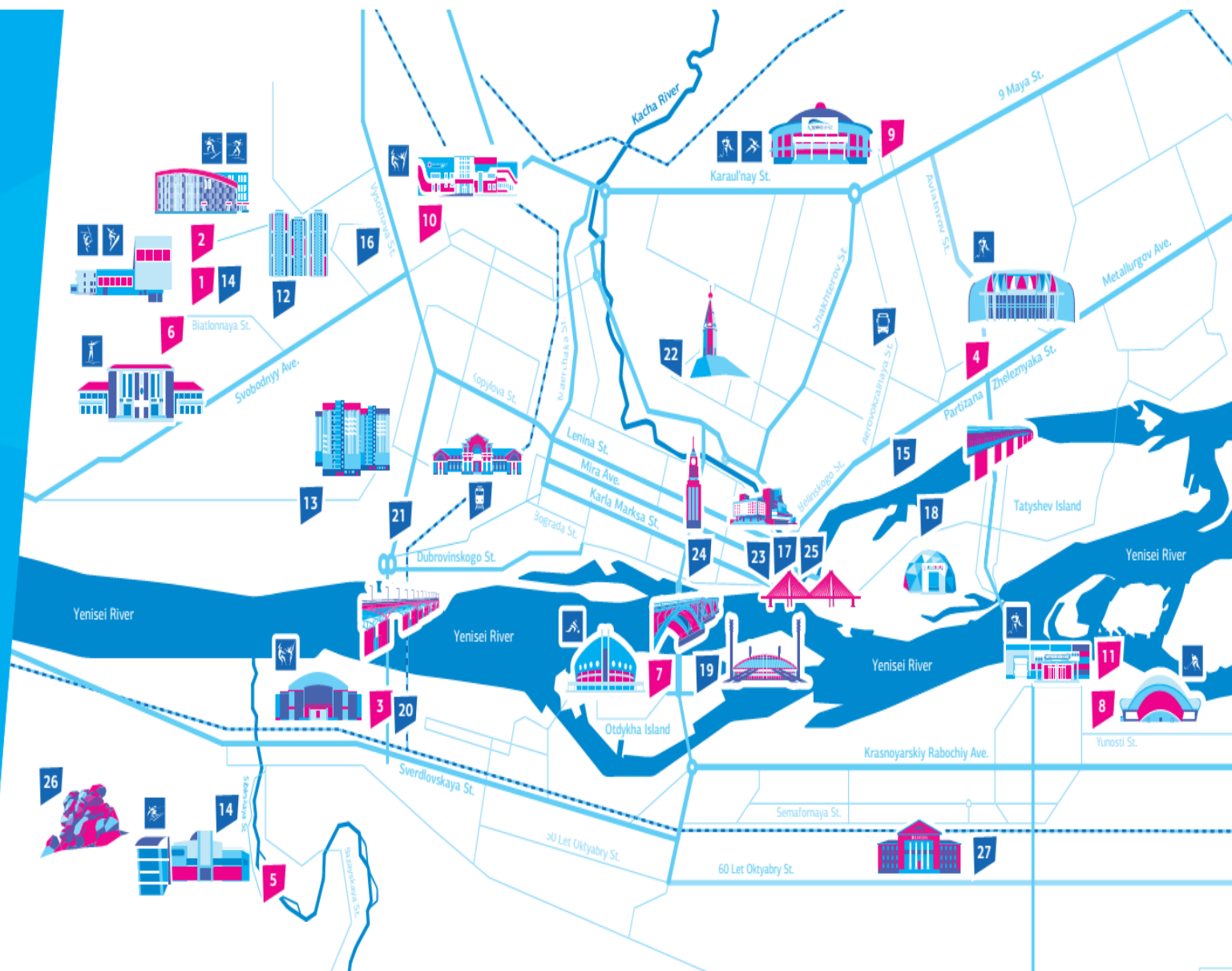
- 20 Road intersection in Tikhie Zori Microdistrict
- 21 Automobile road along Volochaevskaya Str. from Dubrovinskogo Str. to Kopylova Str.

HIGHLIGHTS OF THE CITY

- 22 Paraskeva Pyatnitsa Chapel
- 23 Krasnoyarsk Region Philharmonic Hall
- 24 Clock Tower
- 25 Vinogradovsky suspension bridge
- 26 Stolby Nature Reserve
- 27 Kamenka Cultural Space

- Intercity Bus Station

- Railway Station



FOUNDERS



GENERAL PARTNER



OFFICIAL SPONSORS

